

## HEANTLE M2-BBFLST-HNT

# HEANTLE WiFi Smart Lock M2-BBFLST-HNT Instruction Manual

Comprehensive guide for installation, operation, and maintenance of your HEANTLE WiFi Front Door Lock Set.

## 1. PRODUCT OVERVIEW

The HEANTLE WiFi Smart Lock M2-BBFLST-HNT is a keyless entry deadbolt with a handleset, offering multiple unlocking methods including fingerprint, keypad, mobile app, and physical key. It features remote WiFi control, voice control compatibility with Alexa and Google Assistant, auto-lock functionality, and real-time notifications.



Image: HEANTLE WiFi Smart Lock M2-BBFLST-HNT installed on a white door, showcasing its sleek design and integration with a smartphone app for control.

## Key Features:

- **Remote Lock & Check Logs:** WiFi connectivity (gateway included) for remote control and real-time monitoring via the app.
- **Multiple Unlocking Methods:** Fingerprint, mobile app, passcode, and physical key.
- **Customized Access Codes:** Generate one-time, time-limited, permanent, and scheduled codes.
- **Auto-Lock & One-Touch Lock:** Configurable auto-lock timer (5s-1800s) and quick one-touch locking.
- **Voice Control:** Compatible with Amazon Alexa and Google Assistant.
- **Easy Installation:** Designed for straightforward installation without extra drilling, with detailed video guidance.

## 2. SETUP AND INSTALLATION

### 2.1 Door Compatibility

Ensure your door meets the following specifications for proper installation:

- **Door thickness:** 1.5" - 1.89" (38-48mm)
- **Cross Bore Diameter:** 2.13" (54mm)
- **Backset:** 2.36"/2.76" (60/70mm)

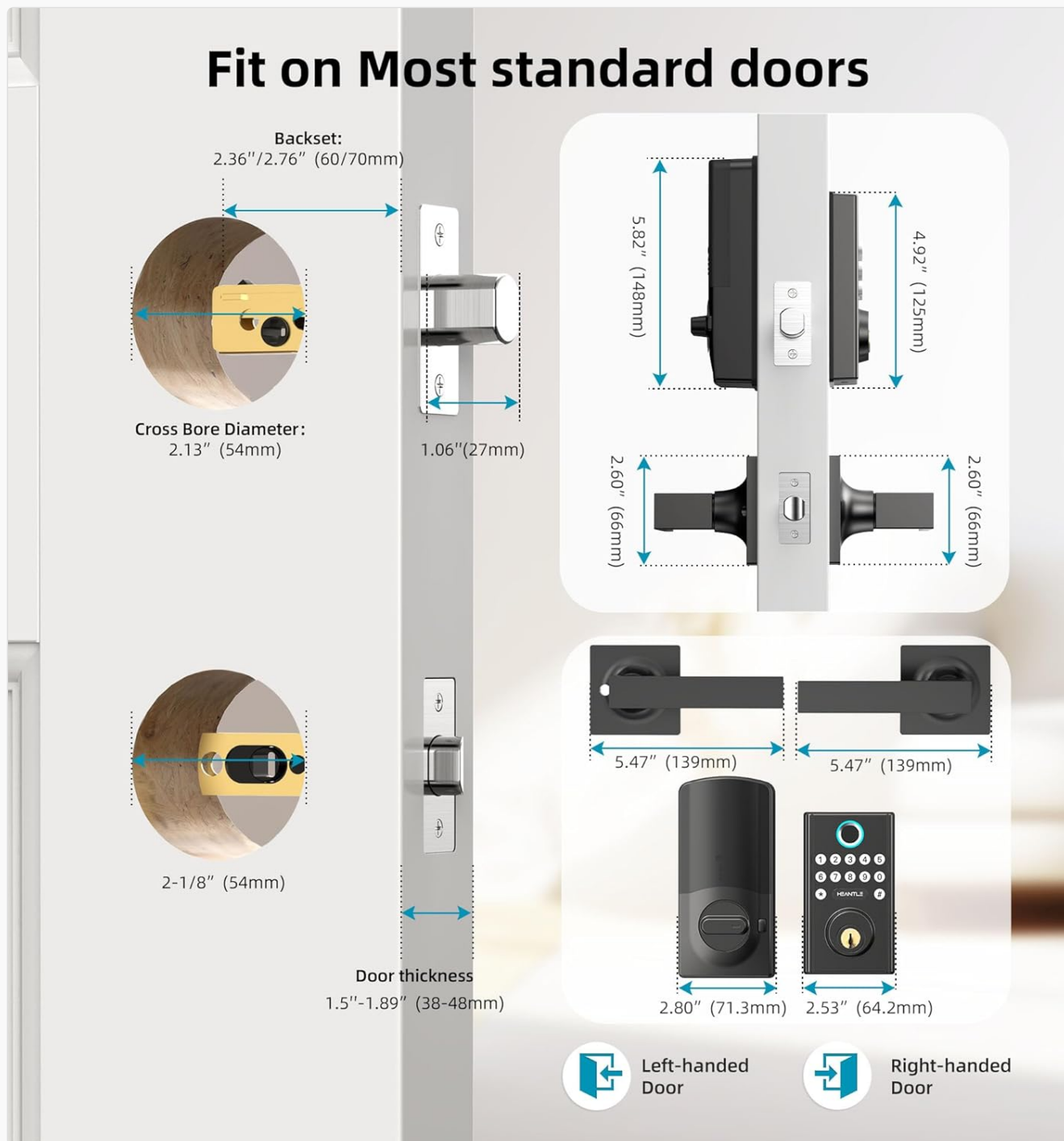


Image: Detailed diagram illustrating the necessary door measurements for installing the HEANTLE Smart Lock, ensuring proper fit and function.

## 2.2 Installation Steps

Follow these steps for a successful installation. A Phillips screwdriver is the only tool required. Keep the door open during installation to avoid being locked out.

1. Adjust the deadbolt length to 2-3/8" or 2-3/4" based on your door size. Ensure the word "UP" on the deadbolt faces upwards.
2. Secure the retracted deadbolt with 2 screws.

3. Place the spindle horizontally before inserting it. Keep the spindle horizontal and pass the cable under the deadbolt.
4. Pass the spindle through the central hole and the cable through the right bottom hole. Secure the mounting plate with screws.
5. Plug the cable into the port on the interior assembly.
6. Install the 4 AA batteries and slide the battery cover on.
7. Install the exterior handle, ensuring it is properly aligned and secured.

Your browser does not support the video tag.

Video: Step-by-step guide on how to install the HEANTLE WiFi Door Lock, covering deadbolt adjustment, assembly, and handle installation.

## 2.3 Gateway and App Connection

To enable remote control and smart features, connect the included WiFi Gateway to your lock via the Smart Life app.

1. Ensure your smartphone is connected to a 2.4GHz WiFi network (5G networks are not supported).
2. Turn on Bluetooth on your phone.
3. Plug in the Gateway. Press and hold the reset button on the back until the blue indicator remains solid and the red indicator flashes slowly.
4. Open the Smart Life APP, tap the "+" icon in the top right corner, then tap "Add" to discover devices.
5. Choose your 2.4GHz WiFi network and enter its password.
6. Wait for the Gateway to complete the connection. Once connected, the Gateway will appear in the "All devices" list.
7. Tap "Gateway" and then "Add device" to pair it with your Smart Lock. The app will automatically search for your lock.
8. Wait for the Gateway to complete the connection with the lock.

Your browser does not support the video tag.

Video: Instructions on how to connect the HEANTLE Smart Lock to WiFi using the gateway and the Smart Life app, including resetting the gateway and pairing devices.

## 3. OPERATING INSTRUCTIONS

---

### 3.1 Unlocking Methods

- **Fingerprint:** Place your registered fingerprint on the sensor for instant unlocking.
- **Keypad Passcode:** Enter your programmed passcode on the keypad.
- **Mobile App:** Use the Smart Life app to remotely unlock or lock the door.
- **Physical Key:** Use the provided physical keys as a traditional backup.

# Multiple unlocking methods

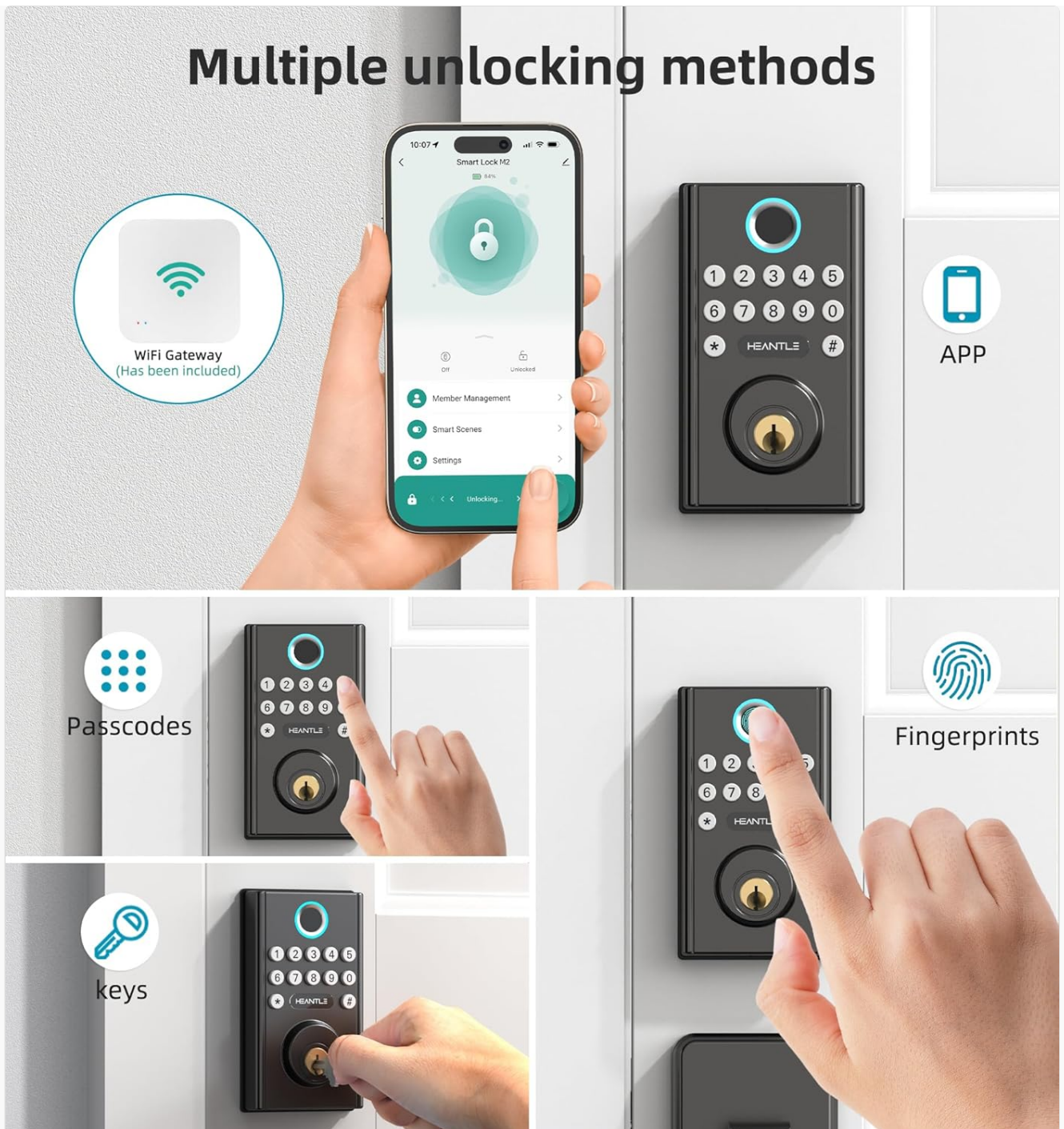


Image: Visual representation of the various ways to unlock the HEANTLE Smart Lock, including digital and traditional methods.

## 3.2 Remote Control and Monitoring

With the WiFi Gateway connected, you can manage your lock from anywhere:

- **Remote Unlock/Lock:** Control your door's status via the Smart Life app.
- **Real-time Notifications:** Receive alerts for wrong entries or other events.
- **Activity Logs:** Check real-time records of who entered and when.





## WiFi Remote Unlock



Image: A user demonstrating remote unlocking of the HEANTLE Smart Lock via their smartphone, highlighting the convenience of WiFi control.

### 3.3 Access Code Management

The app allows for flexible management of access codes:

- **One-time Codes:** For single-use access.
- **Time-limited Codes:** Valid for a specific duration.
- **Permanent Codes:** For regular users.
- **Scheduled Codes:** For recurring access during specific times.

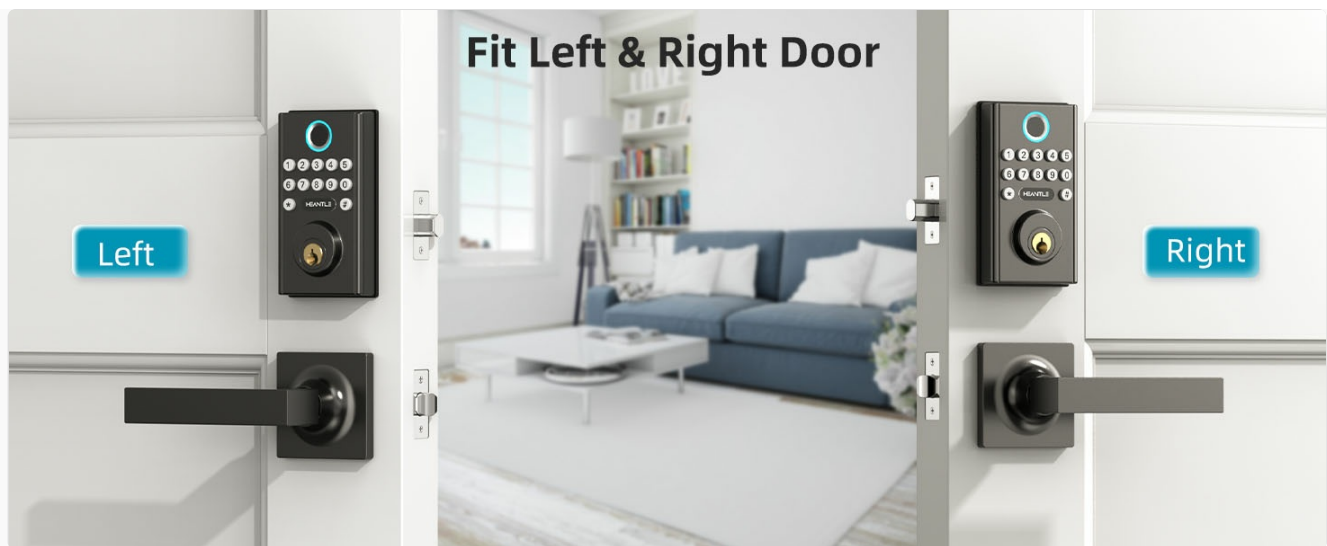


Image: The Smart Life app interface demonstrating the creation and sharing of temporary, one-time, and scheduled access codes for various users.

### 3.4 Auto-Lock and One-Touch Locking

- **Auto-Lock:** The lock can be set to automatically lock after a period of 5 to 1800 seconds once the door is closed. This feature can be enabled/disabled via the app.
- **One-Touch Lock:** From the outside, press the "#" key for 1 second to quickly lock the door.

# Auto-Lock & One-Touch Locking



**Auto-Lock**

5S~30Min



**One-Touch  
Locking**

2 Seconds

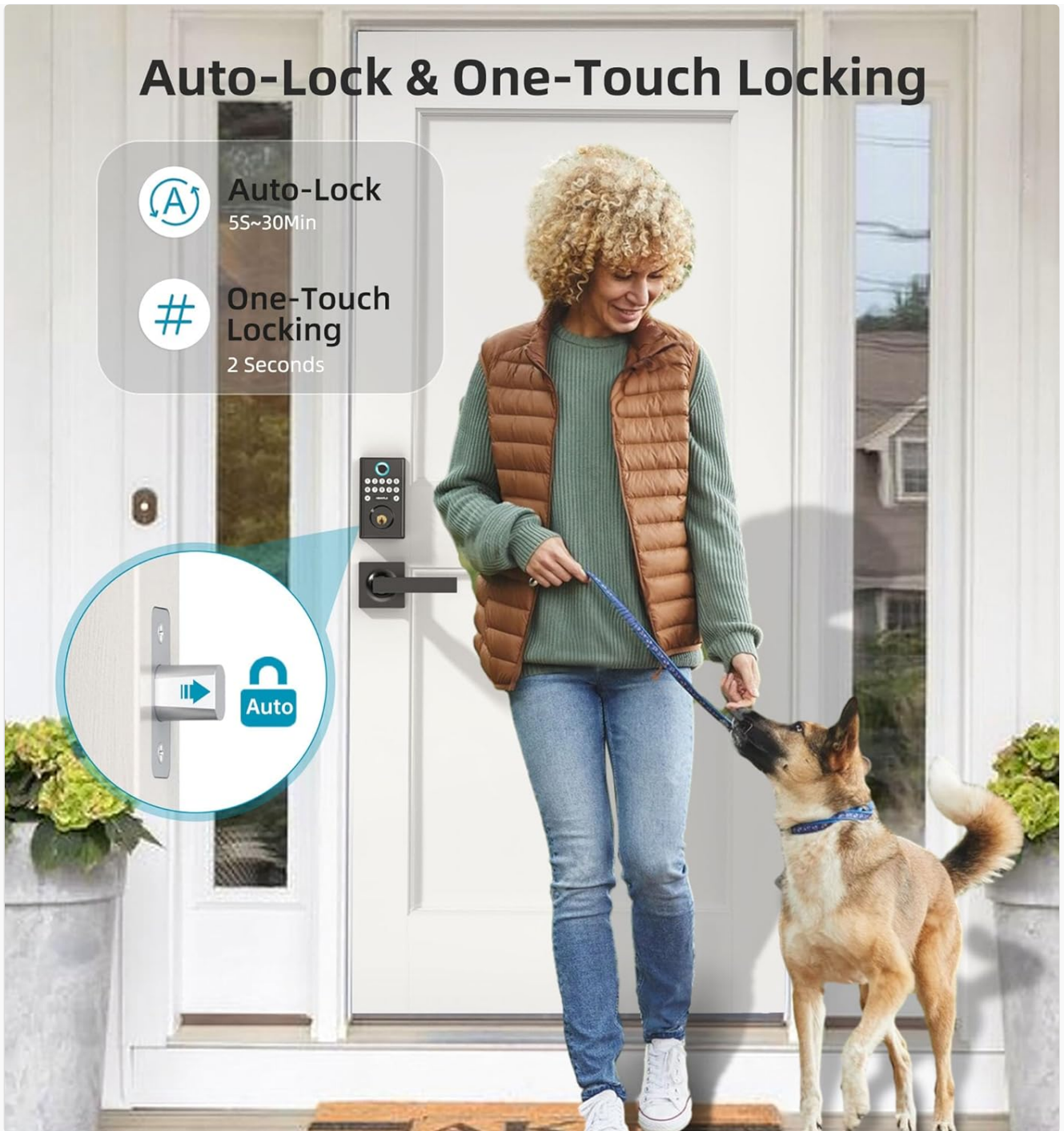


Image: A visual guide to the automatic locking feature, which secures the door after a user-defined delay, and the quick one-touch locking option.

## 3.5 Voice Control Integration

The HEANTLE Smart Lock is compatible with Amazon Alexa and Google Assistant, allowing for convenient voice commands to control your door.



# Voice Control

## Easily Pair with Smart Devices



Image: A person using voice commands with an Alexa device to unlock the HEANTLE Smart Lock, illustrating seamless integration with smart home ecosystems.

## 4. MAINTENANCE

### 4.1 Battery Replacement

The lock requires 4 AA batteries (not included). When the battery level is low, you will receive an alert via the app. To replace batteries:

1. Remove the battery cover on the interior assembly.
2. Replace all four AA batteries with new ones, ensuring correct polarity.
3. Reattach the battery cover.



Image: A smartphone displaying a low battery alert for the HEANTLE Smart Lock, prompting the user to replace batteries.

## 4.2 General Care

To ensure the longevity and optimal performance of your smart lock:

- Avoid using abrasive cleaners or solvents on the lock's surface.
- Regularly check for any loose screws or components and tighten them if necessary.
- Keep the fingerprint sensor clean and free from dirt or moisture.

## 5. TROUBLESHOOTING

If you encounter issues with your HEANTLE Smart Lock, consider the following common solutions:

- **Lock not responding:** Check battery levels and replace if necessary. Ensure the lock is within Bluetooth range for app control or that the WiFi Gateway is properly connected for remote access.
- **Fingerprint not recognized:** Ensure your finger is clean and dry. Re-register your fingerprint if issues persist.
- **Passcode not working:** Verify the correct passcode is being entered. Check if the code is expired or time-limited via the app.
- **Remote access issues:** Confirm the WiFi Gateway is powered on and connected to a 2.4GHz WiFi network. Check your internet connection.
- **Auto-lock not engaging:** Verify the auto-lock feature is enabled and the timer is set correctly in the app.

For further assistance, refer to the contact information in the Warranty and Support section.

## 6. SPECIFICATIONS

Feature	Detail
Brand	HEANTLE
Model Name	WiFi Smart deadbolt Handle Set (M2-BBFLST-HNT)
Lock Type	App Remote Control, Biometric, Deadbolt, Keypad
Special Features	Auto-Lock, Fingerprint, One-Touch Lock, WiFi Deadbolt, Keyless Entry, Work with Alexa/Google Home, App Remote Control, Real-time Notification
Material	Metal
Finish Type	Powder Coated

Feature	Detail
Item Dimensions (L x W x H)	15.5 x 6.5 x 4.7 inches
Item Weight	3.56 pounds
Power Source	4 AA Batteries (not included)
Connectivity Protocol	Bluetooth, Wi-Fi (2.4GHz only)
Controller Type	Amazon Alexa, Android & iOS Smartphone, Google Assistant, Hand Control, Push Button
Included Components	2 keys, A 2.4G WIFI Gateway, Installation Instruction, Lever Handle Set, WiFi Smart Lock with Keypad

## 7. WARRANTY AND SUPPORT

HEANTLE provides comprehensive support for your smart lock:

- **Warranty:** 1-year coverage from the date of purchase.
- **Returns/Replacement:** 30 days replacement policy.
- **Technical Support:** Life-time free technical support available via Online Email.

For any questions or assistance, please contact HEANTLE customer service:


**Toll Free:** 1-888-223-6660



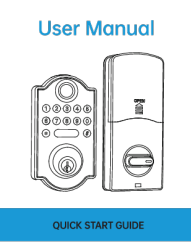

**Email:** [heantle@hotmail.com](mailto:heantle@hotmail.com)

Responses are typically provided within 24 hours.

© 2023 HEANTLE. All rights reserved.

### Related Documents - M2-BBFLST-HNT

	<p><a href="#">HEANTLE Fingerprint Door Lock Manual: Installation, Operation, and App Guide</a></p> <p>Comprehensive manual for the HEANTLE Fingerprint Door Lock (Model HEUS-GS001). Includes installation steps, operation instructions, app setup (Next lock/TTLock), gateway connection, and integration with Alexa and Google Home.</p>
---	--

	<p><a href="#">HEANTLE A2-BF &amp; M2-BF Smart Lock: User Manual and Installation Guide</a></p> <p>Comprehensive user manual and installation guide for the HEANTLE A2-BF and M2-BF smart locks, covering product overview, preparation, step-by-step installation, testing, and customer support.</p>
	<p><a href="#">HEANTLE Smart Lock User Manual</a></p> <p>User manual for HEANTLE Smart Locks, including models A2-BF and M2-BF. Provides information on features, operation, FAQs, and customer service.</p>
	<p><a href="#">HEANTLE Smart Lock User Manual and Quick Start Guide</a></p> <p>Comprehensive user manual and quick start guide for the HEANTLE Smart Lock, covering installation, setup, features, and troubleshooting for keyless entry door locks.</p>
	<p><a href="#">HEANTLE Smart Lock User Manual for A2-BF and M2-BF Models</a></p> <p>Comprehensive user manual for HEANTLE Smart Lock models A2-BF and M2-BF, covering product overview, components, basic operations for unlocking and locking, and troubleshooting steps like resetting the lock. Includes contact information for customer support.</p>