

HEANTLE A2-SBFHST-HNT

HEANTLE WiFi Front Door Lock Instruction Manual

Model: A2-SBFHST-HNT

Brand: HEANTLE

1. PRODUCT OVERVIEW

The HEANTLE WiFi Front Door Lock is an advanced keyless entry system designed for enhanced security and convenience. This smart lock offers multiple unlocking methods including fingerprint, mobile app, passcode, physical key, and voice commands via Alexa or Google Assistant. It features remote control capabilities, real-time notifications, and an auto-lock function for added peace of mind.



Figure 1.1: HEANTLE WiFi Front Door Lock System

2. PACKAGE CONTENTS

Before installation, please verify that all components are present:

- 1 x Silver Smart Lock Handles Set
- 2 x Physical Keys
- 1 x WiFi Gateway
- Installation Instruction Manual
- Installation Hardware (screws, bolts, etc.)

3. SETUP AND INSTALLATION

3.1 Door Compatibility Check

Ensure your door meets the following specifications for proper installation:

- **Hole Diameter:** 2-1/8" (54mm)
- **Backset:** 2-3/8" or 2-3/4" (60mm-70mm)
- **Minimum Distance:** 5" (127mm) between boreholes
- **Door Thickness:** 1-1/2" - 1-9/10" (38mm-48mm)
- Compatible with single cylinder deadbolts. Not compatible with mortise/integrated locks.

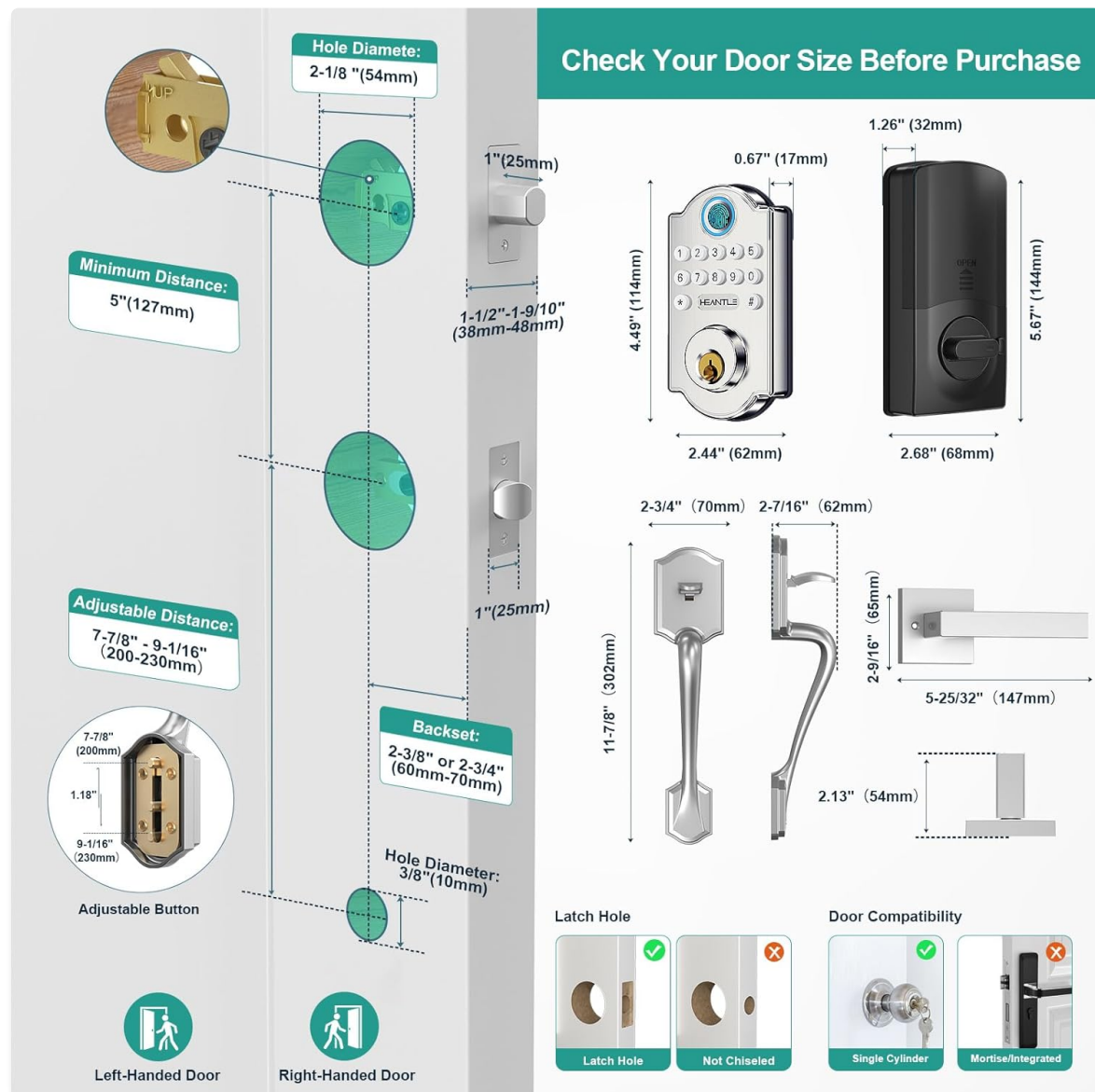


Figure 3.1: Door Measurement and Compatibility

3.2 Installation Steps

Follow the detailed instructions provided in the included Installation Instruction Manual for physical installation. This typically involves:

1. Preparing the door and frame.
2. Installing the latch and strike plate.
3. Assembling the exterior and interior lock components.
4. Connecting the wiring.
5. Installing the handles and securing the lock.

3.3 App and Gateway Setup

To enable remote control and smart features, connect your lock to the HEANTLE app and the included WiFi gateway.

- Download the HEANTLE app from your device's app store.
- Create an account and follow the in-app instructions to add your smart lock.
- Plug in the WiFi gateway within range of your lock and home router.
- Pair the gateway with the app and then link your lock to the gateway. Ensure your WiFi is 2.4GHz.



Figure 3.2: Remote Control via HEANTLE App

4. OPERATING INSTRUCTIONS

4.1 Unlocking Methods

The HEANTLE smart lock offers six convenient ways to unlock your door:

- **Fingerprint:** Place your registered finger on the sensor for instant access (less than 1 second). The lock supports up to 50 unique fingerprints.
- **App:** Use the HEANTLE app to remotely lock or unlock your door from anywhere.
- **Passcode:** Enter your personalized digital code on the keypad. The lock supports up to 100 user codes, including one-time, time-limited, permanent, and scheduled codes.
- **Physical Key:** Use the traditional key as a backup.
- **Alexa/Google Assistant:** Integrate with your smart home system for voice-controlled unlocking.

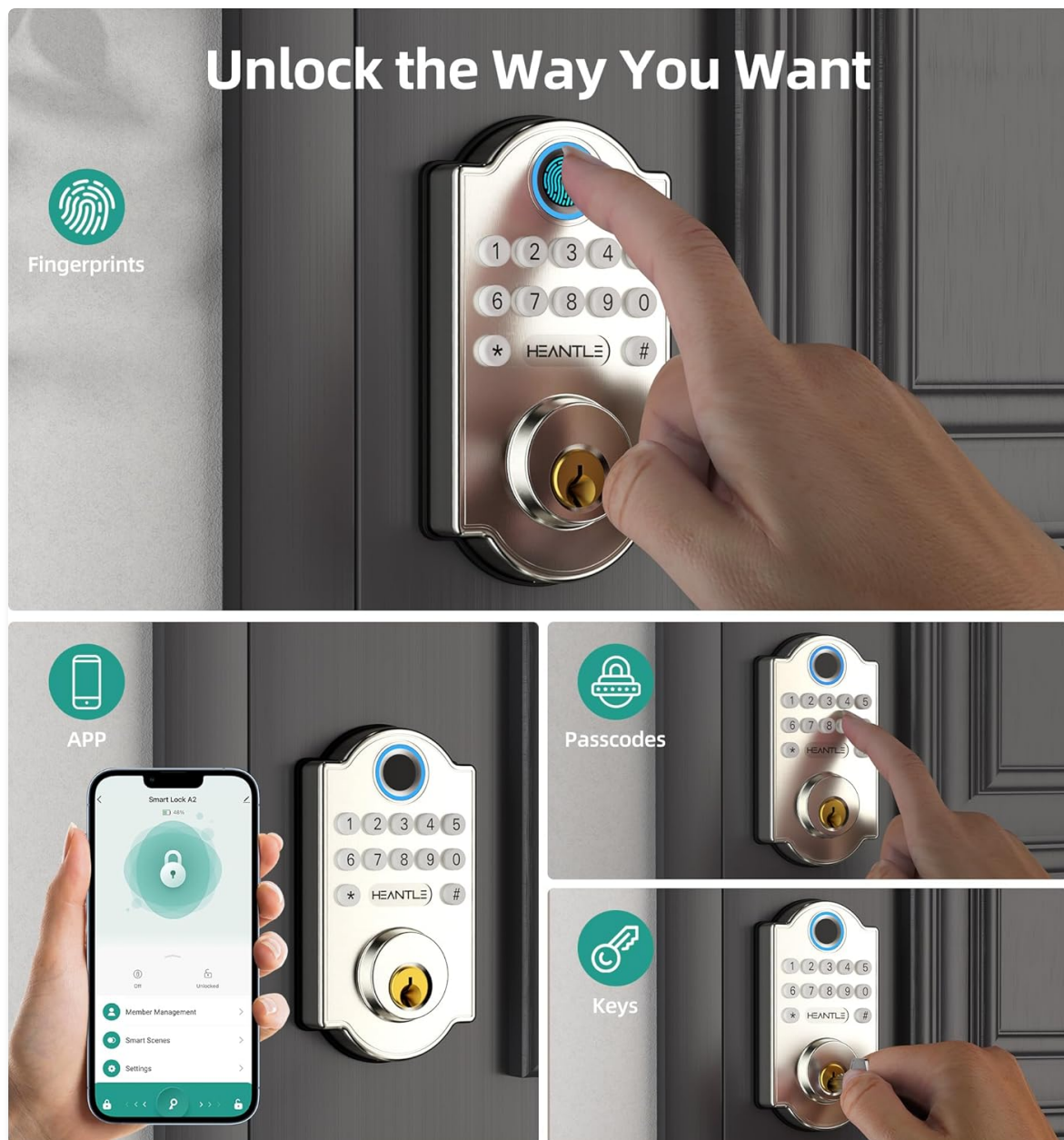


Figure 4.1: Diverse Unlocking Options

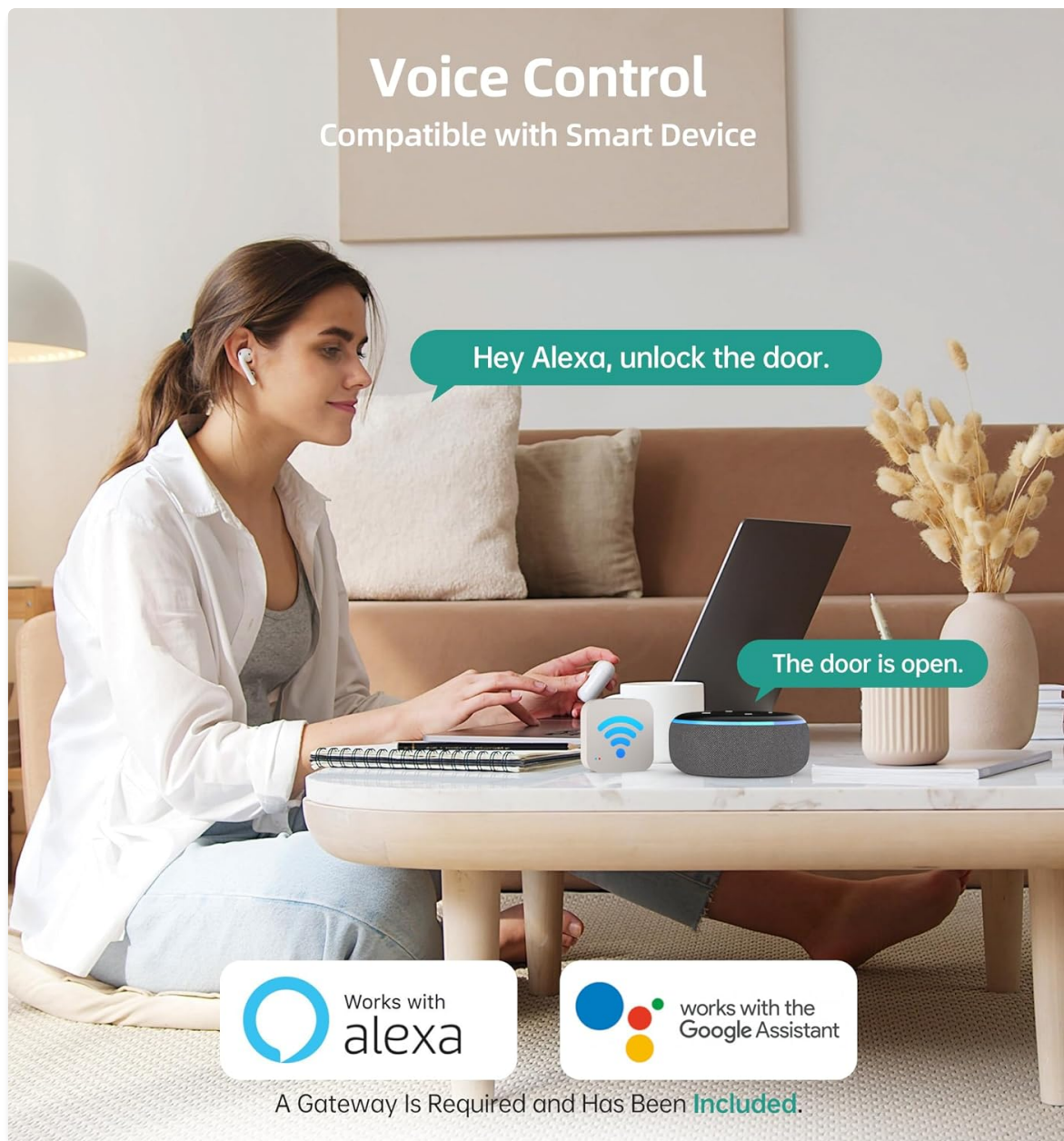


Figure 4.2: Voice Control Integration

4.2 Smart Access Management

The HEANTLE app allows comprehensive management of your lock's access settings:

- **User Management:** Add or remove fingerprints and user codes for family members, house sitters, guests, or service providers.
- **Real-time Notifications:** Receive alerts for lock activity, abnormal attempts, and low battery status.
- **Activity Log:** View a detailed history of all lock and unlock events.

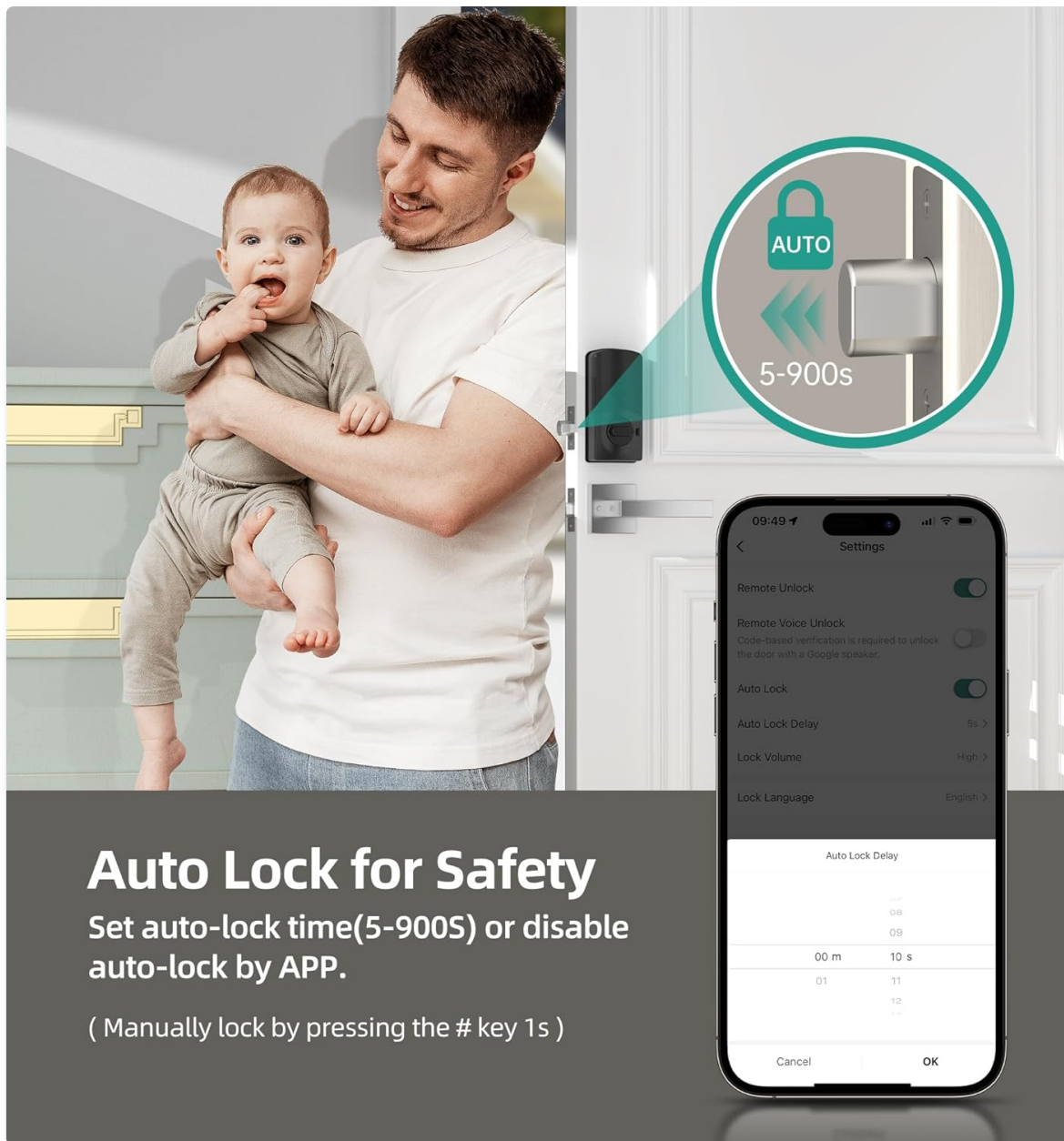


Figure 4.4: Auto-Lock Settings

5. MAINTENANCE

5.1 Battery Management

The HEANTLE smart lock is designed for long-lasting battery performance, typically providing a year of use. The app offers real-time battery status and will send low-power alerts when the batteries are running low.

5.2 Backup Power and Unlocking

In case of critically low battery, you can still access your home:

- Use the provided physical key to unlock the door.
- Connect a USB power bank to the lock's emergency power port to temporarily power it and gain access.

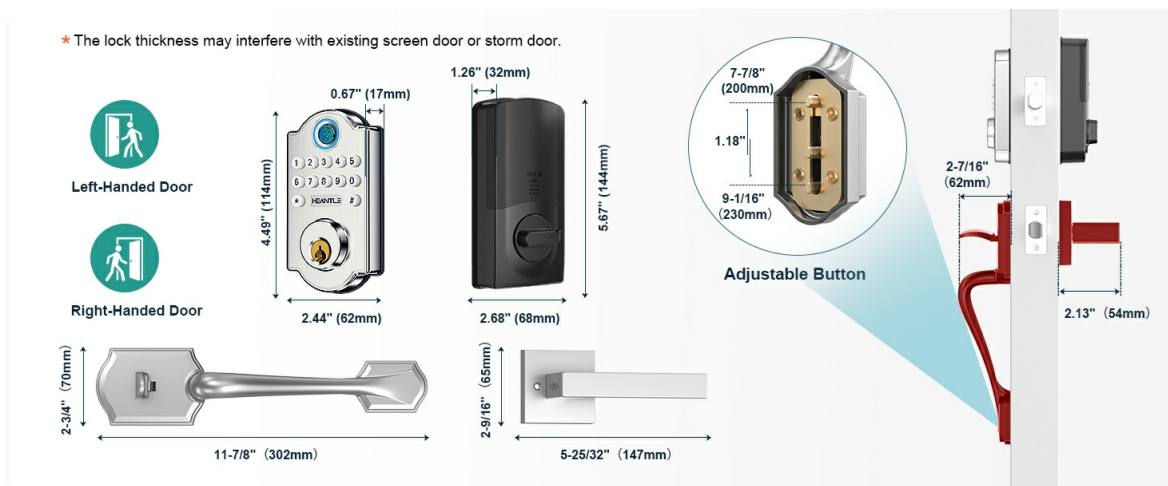


Figure 5.1: Backup Power Option

6. TROUBLESHOOTING

If you encounter any issues with your HEANTLE smart lock, consider the following general troubleshooting steps:

- **Battery Check:** Ensure batteries are fresh and correctly inserted. Low batteries can affect performance.
- **App Connectivity:** Verify your phone's Bluetooth and WiFi are enabled and the lock is connected to the gateway.
- **Fingerprint Recognition:** Ensure your finger is clean and dry. Re-register your fingerprint if issues persist.
- **Keypad Responsiveness:** Clean the keypad surface. If specific buttons are unresponsive, contact support.
- **Physical Obstructions:** Check for any physical obstructions preventing the latch from extending or retracting smoothly.

For more detailed troubleshooting or persistent issues, please refer to the comprehensive troubleshooting guide in the app or contact HEANTLE customer support.

7. SPECIFICATIONS

Feature	Detail
Brand	HEANTLE
Model Name	A2-SBFHST-HNT Smart Lock Handles Set
Lock Type	Biometric, Combination Lock, Fingerprint WiFi Smart Lock Handles Set, Keypad
Material	Aluminum

Color	Silver
Item Dimensions (L x W x H)	16.93 x 7.48 x 3.93 inches
Item Weight	4.73 pounds
Connectivity Protocol	Bluetooth, Wi-Fi (2.4GHz)
Controller Type	Amazon Alexa, Google Assistant, Hand Control, Push Button
Power Source	Batteries (not included), USB for backup power
Special Features	Alarm, Auto-Lock, One-Touch Lock, Anti-Peeping Password, Battery Indicator, Back-Lit Keypad, Break-in Detection, Fingerprint/APP/key/Passcode Unlock, Heat Resistant, Real-time Notification, Access Management, Event History, Resettable, Weather Resistant, Wi-Fi App Remote Control


8. WARRANTY AND SUPPORT



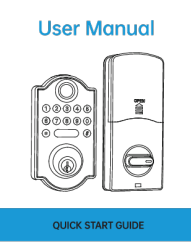

HEANTLE Smart Lock provides one year of coverage from the date of purchase. We are committed to ensuring your satisfaction and offer ongoing technical support for our smart deadbolt lock.

If you have any questions regarding installation, app troubleshooting, or details about the gateway, please do not hesitate to reach out to our customer support team. Contact information can typically be found on our official website or within the HEANTLE app.

© 2024 HEANTLE. All rights reserved.

Related Documents - A2-SBFHST-HNT

	<p>HEANTLE Fingerprint Door Lock Manual: Installation, Operation, and App Guide</p> <p>Comprehensive manual for the HEANTLE Fingerprint Door Lock (Model HEUS-GS001). Includes installation steps, operation instructions, app setup (Next lock/TTLock), gateway connection, and integration with Alexa and Google Home.</p>
-------------------------------------------------------------------------------------	----------------------------------------------------------------------------------------------------------------------------------------------------------------------------------------------------------------------------------------------------------------------------------------------------------------------------------------------

	<p>HEANTLE A2-BF & M2-BF Smart Lock: User Manual and Installation Guide</p> <p>Comprehensive user manual and installation guide for the HEANTLE A2-BF and M2-BF smart locks, covering product overview, preparation, step-by-step installation, testing, and customer support.</p>
	<p>HEANTLE Smart Lock User Manual</p> <p>User manual for HEANTLE Smart Locks, including models A2-BF and M2-BF. Provides information on features, operation, FAQs, and customer service.</p>
	<p>HEANTLE Smart Lock User Manual and Quick Start Guide</p> <p>Comprehensive user manual and quick start guide for the HEANTLE Smart Lock, covering installation, setup, features, and troubleshooting for keyless entry door locks.</p>
	<p>HEANTLE Smart Lock User Manual for A2-BF and M2-BF Models</p> <p>Comprehensive user manual for HEANTLE Smart Lock models A2-BF and M2-BF, covering product overview, components, basic operations for unlocking and locking, and troubleshooting steps like resetting the lock. Includes contact information for customer support.</p>