

Manuals+

[Q & A](#) | [Deep Search](#) | [Upload](#)

Manuals.plus /

› [SUNUV](#) /

› SUNUV SUN9X Plus UV LED Nail Lamp Instruction Manual

SUNUV SUN9X Plus

SUNUV SUN9X Plus UV LED Nail Lamp Instruction Manual

Model: SUN9X Plus

[Features](#) [Setup](#) [Introduction](#) [Safety Instructions](#) [Package Contents](#) [Product](#)
[Operation](#) [Maintenance](#) [Troubleshooting](#) [Specifications](#) [Warranty & Support](#)

1. INTRODUCTION

This manual provides instructions for the safe and effective use of your SUNUV SUN9X Plus UV LED Nail Lamp. Please read this manual thoroughly before operating the device and retain it for future reference. The SUNUV SUN9X Plus is designed for curing various gel nail polishes, including base coats, top coats, color gels, hard gels, builders, acrylics, and sculpture gels. It features a dual UV+LED light source, an automatic sensor, and multiple timer settings for efficient nail curing.



Image: Front view of the SUNUV SUN9X Plus UV LED Nail Lamp, showing the arched design and internal LED lights.

2. SAFETY INSTRUCTIONS

To ensure safe operation and prevent damage, please observe the following precautions:

- Do not expose eyes or skin directly to the UV/LED light for extended periods.
- Keep the device away from water or other liquids. Do not use in damp environments.
- Unplug the device when not in use or before cleaning.
- Do not attempt to repair or modify the device yourself. Contact qualified personnel for service.
- Use only the provided power adapter.
- Keep out of reach of children.
- Do not use if the power cord or plug is damaged.
- This device is intended for curing gel nail polishes only, not for regular nail polish.

3. PACKAGE CONTENTS

Verify that all items are present in the package:

- 1 x SUNUV SUN9X Plus Nail Lamp
- 1 x 1.5m Power Adapter
- 1 x User Manual (this document)
- 1 x Gel Polish Application Manual (may be included separately)

FAST & EASY IN 4 Steps



Image: Contents of the SUNUV SUN9X Plus package, including the nail lamp, power adapter, and documentation.

4. PRODUCT FEATURES

- **Dual UV+LED Light Source:** Cures all types of gel polishes efficiently.
- **Automatic Sensor:** The lamp automatically turns on when hands are inserted and off when removed.
- **Multiple Timer Settings:** Includes 30-second and 60-second timer buttons for precise curing.
- **LCD Display:** Shows the remaining curing time.
- **Compact and Portable Design:** Easy to transport and store.
- **Gentle on Hands:** Designed to minimize heat and discomfort during curing.

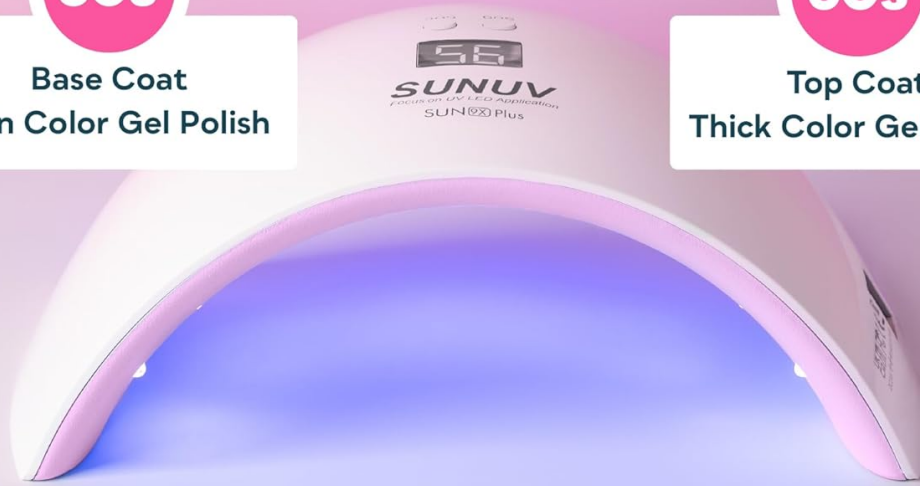
Simple & Easy To Use

30s

**Base Coat
Thin Color Gel Polish**

60s

**Top Coat
Thick Color Gel Polish**



2 TIMER SETTINGS

Cures all gel polishes



SMART INFRARED SENSOR

Auto ON/OFF



FOR ALL SKIN TYPES

No burning sensation

Image: Diagram illustrating key features of the SUNUV SUN9X Plus, including 30s and 60s timer settings, smart infrared sensor for automatic operation, and suitability for various gel types.

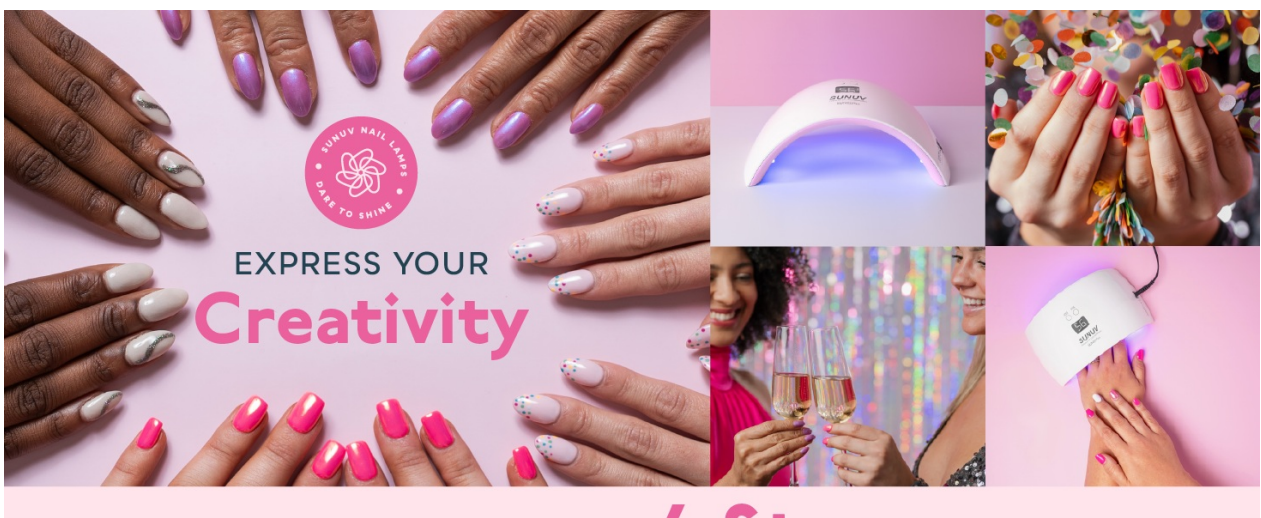


Image: Visual representation of the smart infrared sensor functionality, showing the lamp activating when a hand is placed inside and deactivating when removed.

5. SETUP

1. Unpack the SUNUV SUN9X Plus UV LED Nail Lamp and its accessories.
2. Place the lamp on a stable, flat surface.
3. Connect the power adapter to the DC input port on the back of the lamp.
4. Plug the power adapter into a suitable electrical outlet. The lamp is now ready for use.



Image: The SUNUV SUN9X Plus lamp with its dimensions (4 in. height, 8.2 in. width, 5 in. depth) and the 1.5m power adapter.

6. OPERATION

Follow these steps for effective gel nail curing:

1. **Prepare Nails:** Clean and prep your nails according to your gel polish system's instructions. Apply a thin layer of base coat.
2. **Cure Base Coat:** Place your hand or foot into the lamp. The lamp will automatically turn on. For most base coats, press the **30s** button for a 30-second cure. The LCD display will show the countdown.

3. **Apply Color Gel:** Apply a thin layer of your chosen color gel polish.
4. **Cure Color Gel:** Place your hand or foot into the lamp. Cure for the recommended time, typically 30 or 60 seconds, depending on the gel polish manufacturer's instructions. Repeat for additional color coats if desired.
5. **Apply Top Coat:** Apply a thin layer of top coat.
6. **Cure Top Coat:** Place your hand or foot into the lamp. For most top coats, press the **60s** button for a 60-second cure.
7. **Cleanse (if necessary):** If your gel polish system requires it, wipe the cured top coat with a lint-free wipe saturated with isopropyl alcohol to remove any sticky residue and enhance shine.

Using the Automatic Sensor: The lamp features an infrared sensor. Simply place your hand or foot inside the lamp, and it will activate automatically for 99 seconds. To stop, remove your hand or foot. You can override this by pressing a timer button.

For Hands and Feet

WITH SMART INFRARED SENSOR



Ample space for manicures & pedicures



Image: A visual guide to the four-step process of using the nail lamp: Prep nails, Cure base coat, Apply color, Cure top coat and wipe for shine.



Image: The SUNUV SUN9X Plus lamp accommodating both hands and feet for manicures and pedicures, highlighting its spacious design.

EXPRESS YOUR Creativity

7. MAINTENANCE

Proper maintenance ensures the longevity and performance of your nail lamp:

- **Cleaning:** Disconnect the power adapter before cleaning. Wipe the exterior of the lamp with a soft, dry cloth. For stubborn stains, use a slightly damp cloth with mild soap, then wipe dry. Do not use abrasive cleaners or solvents.
- **Storage:** Store the lamp in a cool, dry place away from direct sunlight and moisture when not in use.
- **Bulb Replacement:** The UV+LED light beads are designed for long-term use and generally do not require replacement. If you experience issues with light output, refer to the troubleshooting section or contact customer support.

8. TROUBLESHOOTING

Problem	Possible Cause	Solution
---------	----------------	----------

Problem	Possible Cause	Solution
Lamp does not turn on.	Power adapter not connected or faulty outlet.	Ensure the power adapter is securely connected to the lamp and a working electrical outlet. Try a different outlet.
Gel polish is not curing properly.	Polish applied too thick; incorrect curing time; expired gel polish; incompatible gel polish.	Apply thinner coats of gel polish. Increase curing time as per gel polish manufacturer's recommendations. Ensure gel polish is not expired. Verify compatibility with UV/LED lamps.
Automatic sensor not working.	Sensor obstructed or dirty.	Ensure nothing is blocking the sensor area. Clean the sensor area with a soft, dry cloth.
Lamp feels warm during use.	Normal operation.	A slight warmth is normal. If it becomes excessively hot or causes discomfort, remove hand and allow lamp to cool.

9. SPECIFICATIONS

Model Name: SUN9X Plus

Brand: SUNUV

Light Source Type: UV+LED (Dual Light Source)

Wattage: 24 watts

Number of Light Sources: 18 UV+LED Lightbeads

Timer Settings: 30s, 60s, 99s (automatic sensor)

Product Dimensions: 8.2 inches (W) x 5 inches (D) x 4 inches (H)

Item Weight: Approximately 14.4 ounces (0.41 kg)

Material: Plastic (Acrylonitrile Butadiene Styrene, Acrylic)

Power Source: Corded Electric (Adapter included)

Control Method: Touch buttons, Automatic Sensor

UPC: 850052843274

2-TIMERS & LCD Display

Easy to choose and control for every kind of UV gel nail polish



Image: Overview of the lamp's portable design and key dimensions.

10. WARRANTY & SUPPORT

SUNUV provides 12 Months Customer Service for this product. For warranty claims, technical support, or any inquiries, please contact SUNUV customer service through the retailer where the product was purchased or visit the official SUNUV website.

For more information, you may visit the [SUNUV Store on Amazon](#).