

## KU XIU X23 Pro

# KU XIU X23 PRO 3-in-1 Magnetic Wireless Charging Stand User Manual

Comprehensive instructions for your KU XIU X23 PRO Wireless Charging Station.

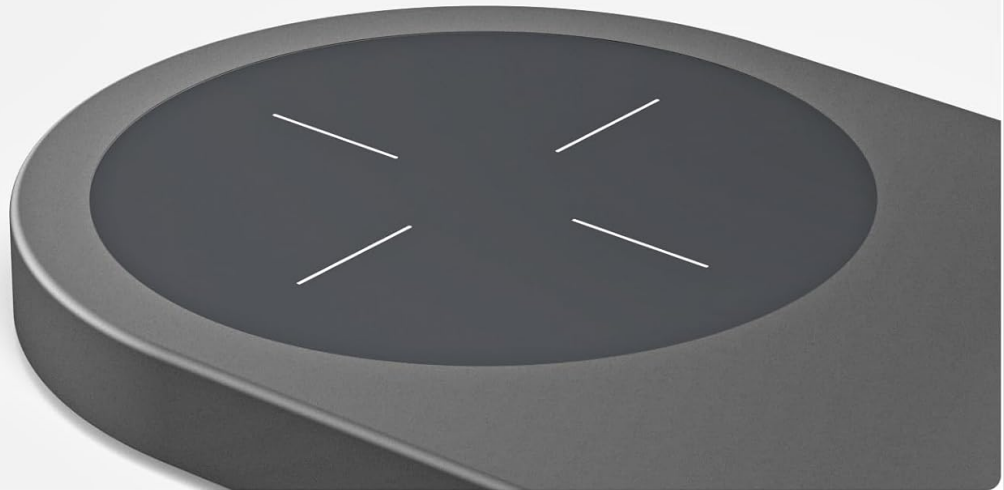
## 1. PRODUCT OVERVIEW

---

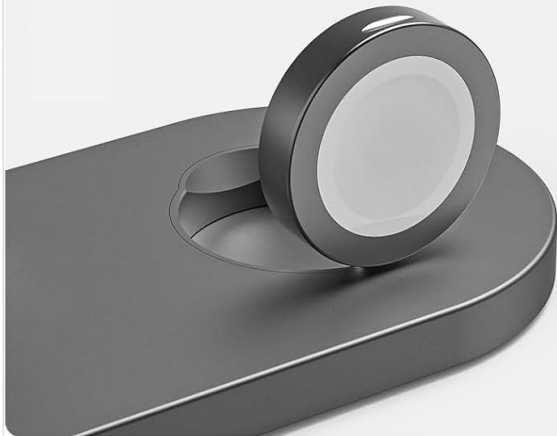
The KU XIU X23 PRO is a versatile 3-in-1 magnetic wireless charging stand designed to efficiently charge your iPhone, Apple Watch, and AirPods or other Qi-enabled smartphones simultaneously. Its robust aluminum alloy body ensures efficient heat dissipation and provides a sleek, durable design that complements any desktop environment.



For AirPods or Qi Smartphone



For Apple Watch



For MagSafe-compatible iPhone



Image 1.1: The KU XIU X23 PRO 3-in-1 Magnetic Wireless Charging Stand in use, charging an iPhone, Apple Watch, and AirPods.

# Charge 2 Phones Simultaneously



Image 1.2: Detailed view of the three distinct charging areas: MagSafe-compatible iPhone stand, Apple Watch charging puck, and Qi charging pad for AirPods or other smartphones.

This charging station helps organize your workspace by eliminating multiple cables and adapters, providing a clean and efficient charging solution. It also supports hands-free phone usage, allowing you to charge your iPhone in both portrait and landscape modes, ideal for watching videos or making video calls.

Your browser does not support the video tag.

Video 1.1: An overview of the KU XIU X23 PRO 3-in-1 Wireless Charger station, demonstrating its design and functionality.

## 2. PACKAGE CONTENTS

Upon opening the package, please ensure all the following items are present:

- KU XIU X23 PRO charging station
- USB Type-C charging cable
- User Manual (this document)



Image 2.1: The KU XIU X23 PRO charging station and its included accessories as found in the box.

Your browser does not support the video tag.

Video 2.1: An unboxing video of the charger station, providing a full product description and showing contents.

### 3. SETUP

---

1. Connect the provided USB Type-C cable to the charging port located at the back of the KU XIU X23 PRO charging station.
2. Connect the other end of the USB Type-C cable to a compatible power adapter (not included, a 20W or higher power adapter is recommended for optimal performance).
3. Place the charging station on a flat, stable surface.

# Aluminum Alloy Body Durable & Premium



Image 3.1: Close-up view of the USB Type-C input port on the charging station.

Your browser does not support the video tag.

Video 3.1: A detailed video showcasing the wireless charger station, including its components and how to connect the power cable.

## 4. OPERATING INSTRUCTIONS

---

### 4.1 Charging Your iPhone (MagSafe Compatible)

Place your MagSafe-compatible iPhone (iPhone 12 series and newer) onto the vertical magnetic charging pad. The magnets will automatically align your device for optimal charging. You can rotate your iPhone to charge in either portrait or landscape mode, allowing for versatile viewing while charging.

### 4.2 Charging Your Apple Watch

Place your Apple Watch onto the dedicated charging puck. Ensure the watch is properly seated on the puck for charging to initiate.

### 4.3 Charging Your AirPods or Qi Smartphone

Place your AirPods charging case or any other Qi-enabled smartphone onto the flat charging pad. Ensure the device is centered on the pad for efficient wireless charging.

# A Perfect Desktop Organizer

Say goodbye to tangled cables and messy desktops



BEFORE

AFTER

Image 4.1: An iPhone displayed on the magnetic charging stand, showcasing its ability to hold the device in both portrait and landscape orientations for charging and viewing.



Image 4.2: A visual comparison illustrating how the KU XIU X23 PRO charging station helps organize a desktop by consolidating charging for multiple devices.

Your browser does not support the video tag.

Video 4.1: Demonstrates various usage scenarios for the charging station, including charging devices while working, watching videos, or in a bedroom setting.

## 5. COMPATIBILITY

The KU XIU X23 PRO is designed for broad compatibility with Apple and Qi-enabled devices:

- **iPhone:** iPhone 12 series and newer (including iPhone 16, 15, 14, 13 series) for magnetic charging. Older iPhones can use the flat Qi charging pad.
- **Apple Watch:** Apple Watch Ultra/9/8/7, and older series (1-6, SE).
- **AirPods:** AirPods Pro (1st & 2nd Gen), AirPods 3, AirPods 2 (with Wireless Charging Case).
- **Qi Smartphones:** The AirPods charging area also supports 15W fast charging for other Qi-enabled smartphones.

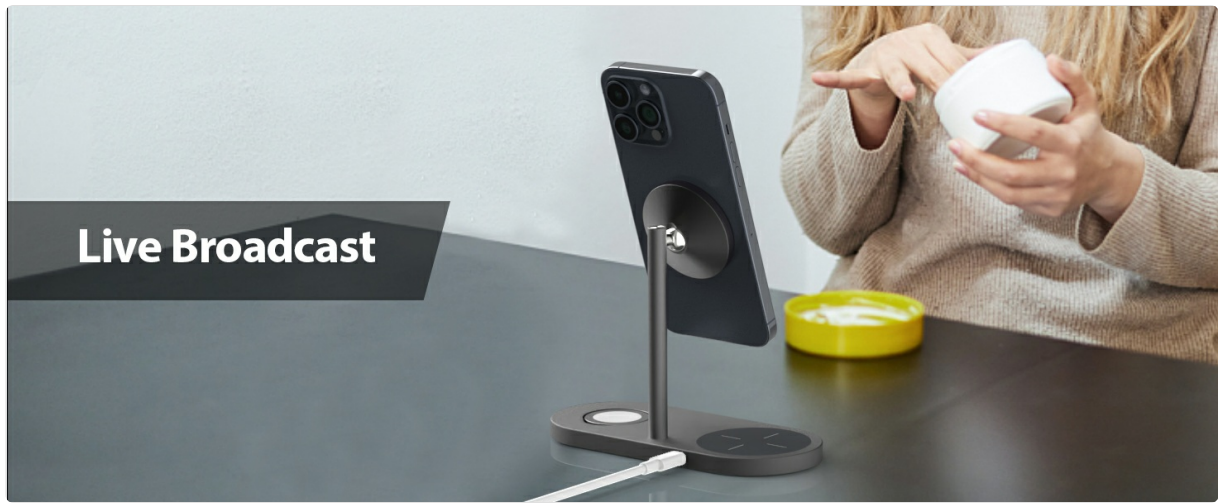


Image 5.1: Visual representation of the 3-in-1 charger's compatibility with iPhone, Apple Watch, and AirPods.

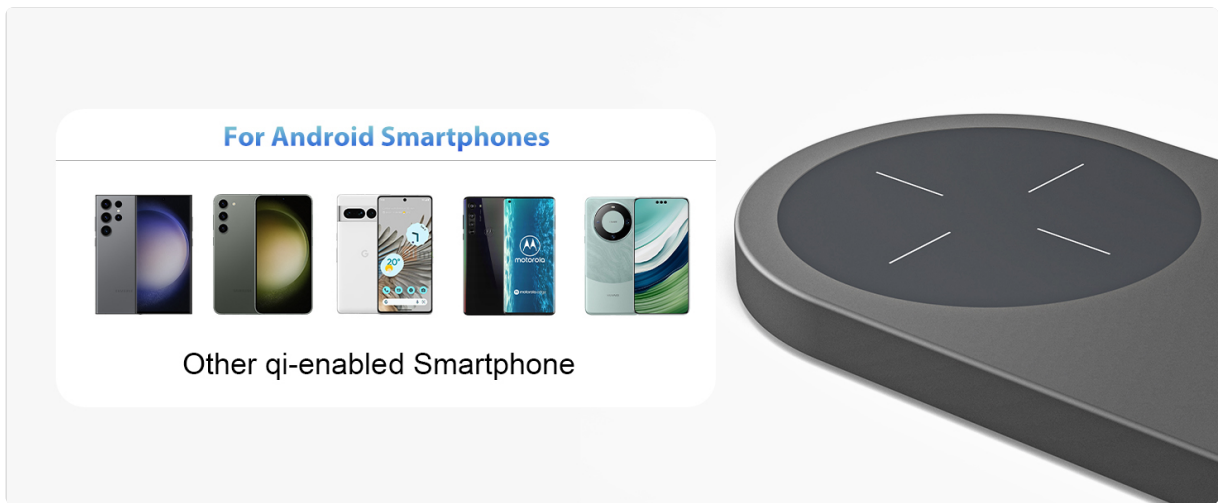


Image 5.2: Illustrates the compatibility of the Qi charging pad with various Android smartphones.

## 6. SAFETY FEATURES

---

The KU XIU X23 PRO is equipped with multiple safety features to ensure a secure charging experience:

- **Temperature Control:** Prevents overheating of the device and charger.
- **Surge Protection:** Safeguards against sudden voltage spikes.
- **Short-Circuit Prevention:** Protects against electrical shorts.
- **Over-Voltage Protection:** Ensures stable voltage delivery to your devices.

# Safety & Security



Image 6.1: Icons visually representing the integrated safety and security features of the charging station.

## 7. MAINTENANCE

---

To ensure the longevity and optimal performance of your charging station, follow these maintenance guidelines:

- **Cleaning:** Disconnect the power before cleaning. Use a soft, dry cloth to wipe the surface of the charging station. Avoid using abrasive cleaners or solvents.
- **Placement:** Keep the charging station away from water, excessive heat, and direct sunlight.
- **Cable Care:** Avoid bending or crimping the charging cable excessively to prevent damage.

## 8. TROUBLESHOOTING

---

If you encounter any issues with your KU XIU X23 PRO charging station, please refer to the following common solutions:

- **Device Not Charging:**
  - Ensure the charging station is properly connected to a working power outlet.
  - Verify that your device is correctly placed on the respective charging area (MagSafe for iPhone,

puck for Apple Watch, flat pad for AirPods/Qi phone).

- Check if your phone case is MagSafe compatible if using the magnetic stand. Thick or non-magnetic cases may interfere with charging.
- Ensure the power adapter used is sufficient (a 20W or higher USB-C power adapter is recommended).
- Try using a different USB-C cable and power adapter to rule out cable or adapter issues.

- **Slow Charging:**

- Ensure you are using a power adapter with sufficient wattage (20W or higher).
- Remove any thick phone cases that might impede charging efficiency.
- Avoid charging in excessively hot environments, as high temperatures can slow down wireless charging.

- **LED Indicator Not Lighting Up:**

- Confirm the power cable is securely connected to both the charging station and the power adapter.
- Check if the power outlet is functional.

## 9. SPECIFICATIONS

---

Feature	Specification
Product Dimensions	6.5 x 2.83 x 5.98 inches
Item Weight	1.1 pounds
Item Model Number	X23 Pro
Connectivity Technology	Wireless
Special Features	MagSafe Compatible
Color	Gray
Connector Type	USB Type C
Input Voltage	5 Volts
Amperage	3 Amps
Total USB Ports	1

## 10. WARRANTY AND SUPPORT

---

For warranty information and customer support, please refer to the product packaging or visit the official KU XIU website. You may also contact the seller directly through the platform where the product was purchased for assistance with any issues or inquiries.

Please retain your proof of purchase for any warranty claims.

