

SpeaKa Professional SP-TVC-1000

SpeaKa Professional SP-TVC-1000 Dual TV Mobile Cart Instruction Manual

INTRODUCTION

This manual provides comprehensive instructions for the assembly, operation, and maintenance of your SpeaKa Professional SP-TVC-1000 Dual TV Mobile Cart. This mobile cart is designed to securely hold two televisions ranging from 32 to 65 inches, offering height adjustability for optimal viewing. Please read this manual thoroughly before installation and use to ensure safe and correct operation.

SAFETY INSTRUCTIONS

- Ensure all components are present and undamaged before assembly. Do not use if any parts are missing or faulty.
- Assembly should be performed by at least two people to prevent injury or damage.
- Do not exceed the maximum weight capacity specified for the cart and TV mounts.
- Always lock the wheels when the cart is stationary to prevent accidental movement.
- Keep children and pets away from the assembly area. Small parts can be a choking hazard.
- Ensure the TV is securely mounted to the brackets before placing it on the cart.
- Avoid placing the cart on uneven surfaces to prevent tipping.
- Do not hang or climb on the cart.

PACKAGE CONTENTS

Please verify that all components listed below are included in your package. If any parts are missing or damaged, contact customer support immediately.

- Main support column(s)
- Base with wheels
- TV mounting brackets (2 sets)
- Horizontal support bars
- Hardware kit (screws, washers, spacers, wrenches)
- Instruction Manual

SETUP AND ASSEMBLY

Follow these general steps for assembling your SpeaKa Professional SP-TVC-1000 TV Mobile Cart. Refer to the included assembly diagram for detailed illustrations.

1. **Attach Wheels to Base:** Securely fasten the caster wheels to the base of the cart using the provided hardware. Ensure all wheels are firmly attached and can rotate freely. Lock two of the wheels to prevent movement during subsequent steps.
2. **Assemble Base and Column:** Connect the main support column(s) to the assembled base. Use the appropriate screws and tools to ensure a stable connection.
3. **Install Horizontal Support Bars:** Attach the horizontal support bars to the main column(s) at the desired height. These bars will hold the TV mounting brackets.
4. **Prepare TV Mounting Brackets:** Attach the vertical TV mounting brackets to the back of your televisions. Select the correct screws and spacers that fit your TV's VESA mounting holes. Ensure the brackets are centered and level.
5. **Mount TVs to Cart:** With assistance, carefully lift each television and hook the attached vertical brackets onto the horizontal support bars of the cart. Secure the TVs in place using the safety screws or locking mechanisms provided.
6. **Final Checks:** Verify that all connections are tight and secure. Gently test the stability of the cart and mounted TVs before use.

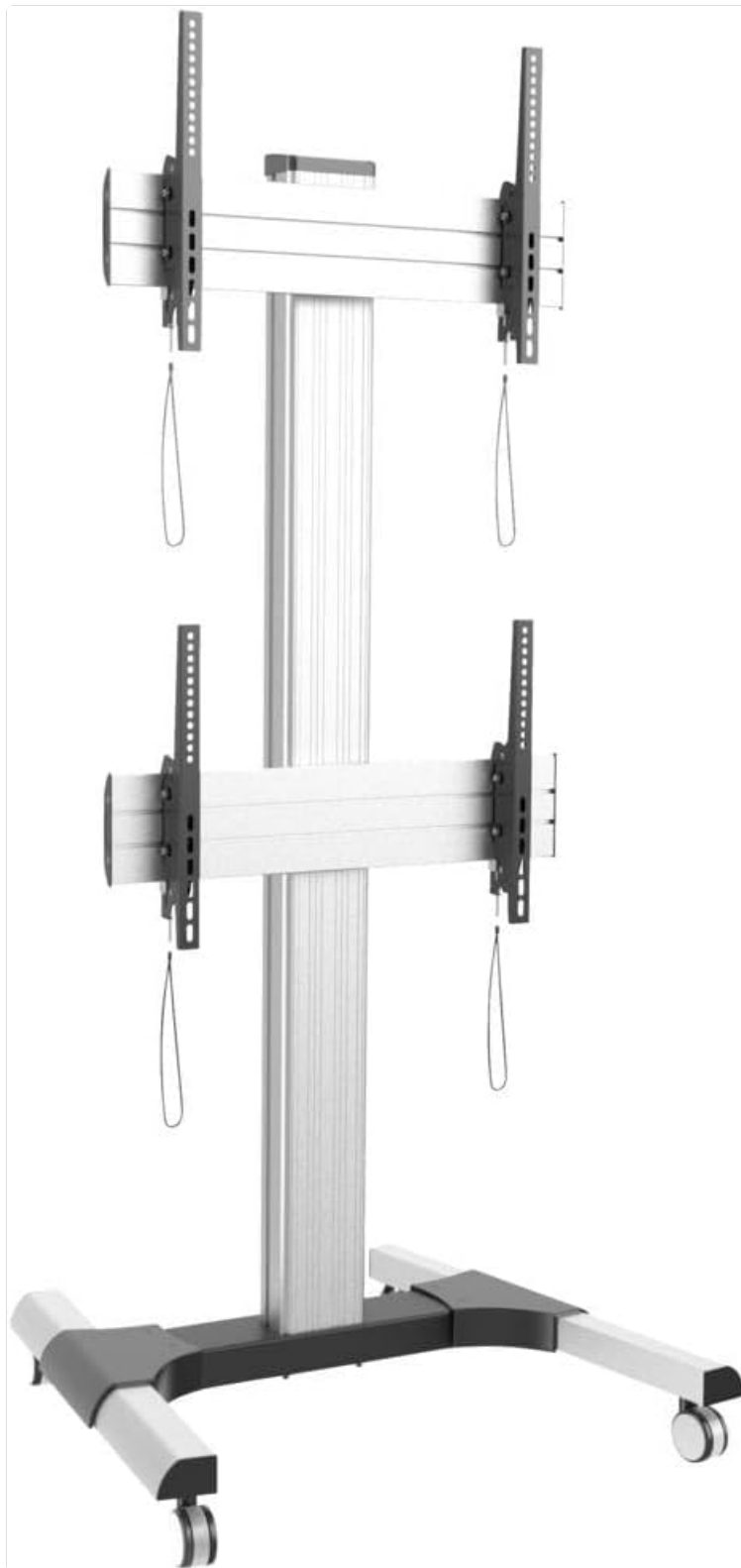


Figure 1: Fully assembled SpeaKa Professional SP-TVC-1000 Dual TV Mobile Cart, showing two TVs mounted on the height-adjustable column with a stable wheeled base.

OPERATING INSTRUCTIONS

- **Moving the Cart:** Unlock all caster wheels before moving the cart. Push the cart slowly and carefully, avoiding sudden stops or turns, especially on uneven surfaces. Re-lock the wheels once the cart is in its desired position.
- **Adjusting TV Height:** The cart features a height-adjustable column. To adjust the height, loosen the locking mechanisms on the main column, carefully raise or lower the TV assembly to the desired viewing height, and then securely tighten the locking mechanisms. Always ensure both TVs are level

after adjustment.

- **Cable Management:** Utilize any integrated cable management features (e.g., clips, channels) to route and secure TV and power cables, preventing tripping hazards and maintaining a tidy appearance.

MAINTENANCE

- **Cleaning:** Clean the cart surfaces with a soft, damp cloth. Avoid abrasive cleaners or solvents that could damage the finish.
- **Regular Checks:** Periodically check all screws and connections to ensure they remain tight and secure. Re-tighten if necessary.
- **Wheel Inspection:** Inspect the caster wheels for any debris or damage that might impede smooth movement. Clean or replace as needed.

TROUBLESHOOTING

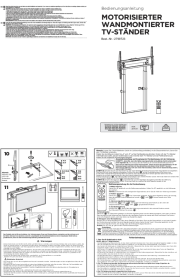
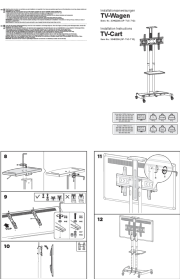



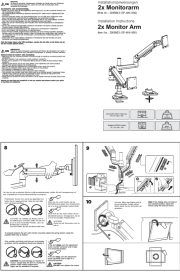
Problem	Possible Cause	Solution
Cart is unstable or wobbles.	Loose connections; uneven floor; overloaded.	Check and tighten all screws. Move cart to a level surface. Ensure TV weight is within limits.
Difficulty moving the cart.	Wheels are locked; debris in wheels; damaged wheels.	Unlock all caster wheels. Clean any debris from wheels. Replace damaged wheels if necessary.
TVs are not level.	Mounting brackets not aligned; height adjustment uneven.	Re-check TV bracket installation. Adjust height carefully, ensuring both sides are even.

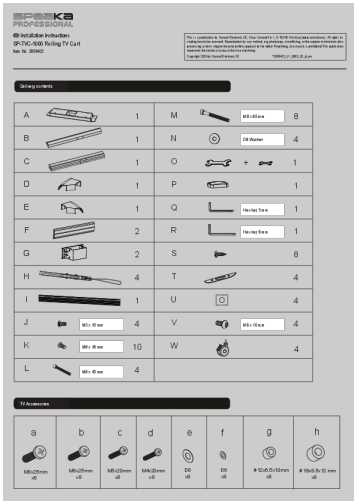
SPECIFICATIONS

- **Model:** SpeaKa Professional SP-TVC-1000
- **Manufacturer Part Number:** SP-11437688
- **Compatible TV Sizes:** 32 - 65 inches (81.3 cm - 165.1 cm)
- **TV Capacity:** Dual TV mounting
- **Features:** Height adjustable, Mobile (with caster wheels)
- **Brand:** SpeaKa Professional

WARRANTY AND SUPPORT

For warranty information or technical support, please refer to the documentation provided with your purchase or visit the official SpeaKa Professional website. Keep your proof of purchase for warranty claims.

	<p>SpeaKa Professional SP-TVC-900 Motorized TV Stand: User Manual & Setup Guide</p> <p>Comprehensive user manual for the SpeaKa Professional SP-TVC-900 motorized TV stand. Learn how to install, operate, pair the remote, and troubleshoot this VESA-compatible, height-adjustable TV mount supporting up to 100-inch screens and 120kg.</p>
	<p>Speaka Professional TV Cart Installation Guide - Model 3340239 (SP-TVC-710)</p> <p>Comprehensive installation instructions for the Speaka Professional TV Cart (Model SP-TVC-710). This guide provides step-by-step assembly, safety warnings, parts list, and specifications for mounting TVs up to 75 inches and 45kg.</p>
	<p>SpeaKa Professional Electric Sit-Stand Desk Instruction Manual - Model 3014210</p> <p>Comprehensive instruction manual for the SpeaKa Professional electric sit-stand desk (Model 3014210, SP-SSD-B01), covering safety, operation, troubleshooting, and assembly instructions.</p>
	<p>SpeaKa Professional Monitor Holder with Gas Pressure Spring: Safety, Use, and Technical Data</p> <p>Detailed safety instructions, intended use, handling, installation, maintenance, and technical specifications for SpeaKa Professional gas spring monitor holders (models SP-MM-900, SP-MM-910, SP-MM-920, SP-MM-930). Includes table specifications and warnings.</p>
	<p>SpeaKa Professional Monitor Arm Safety and Technical Instructions</p> <p>Comprehensive safety and technical guide for SpeaKa Professional monitor arms, including installation, usage, and maintenance for models SP-MM-1000, SP-MM-990, SP-MM-980, and SP-MM-970.</p>
	<p>SpeaKa Professional SP-MM-980 Dual Monitor Arm Installation Guide</p> <p>Comprehensive installation instructions for the SpeaKa Professional SP-MM-980 dual monitor arm. Learn how to safely mount, adjust, and balance your monitors for optimal ergonomic setup. Supports VESA 75x75 and 100x100, with a weight capacity of 2-20 kg per arm.</p>



[pdf] User Manual Instructions

Manual 2859422 SpeKa Professional SP TVC 1000 TV trolley 81 3 cm 32 165 1 65 Tilttable 11437688

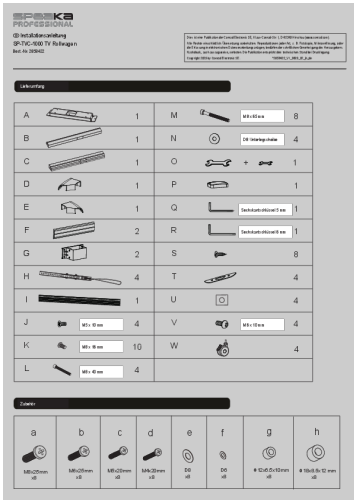
4064161255354 manual speaka professional sp tvc tv 813 1651 tilttable asset conrad media10 add

160267 c1 en 002859422ML04 |||

Installation Instructions **SP-TVC-1000** Rolling TV Cart Item No. 2859422 PDealivretry
cLonistetnt: s A B C D E F G H I J K L 1 1 1 1 1 2 2 4 1 MM55xx110 0mmm m 4

MM88xx116 6mmm m 10 MM88xx440 0mmm m 4 This is a publication by Conrad
Electronic SE, Klaus-Conrad-Str. 1, D-92240 Hirschau ...

lang:en **score:36** filesize: 3.47 M page_count: 4 document date: 2023-06-29



[pdf]

%product title% Conrad Electronic Schweiz bedienungsanleitung 2859422 speaka professional sp tvc

1000 tv rollwagen 813 cm 32 1651 65 neigbar asset conrad media10 add 160267 c1 de 002859422ML03

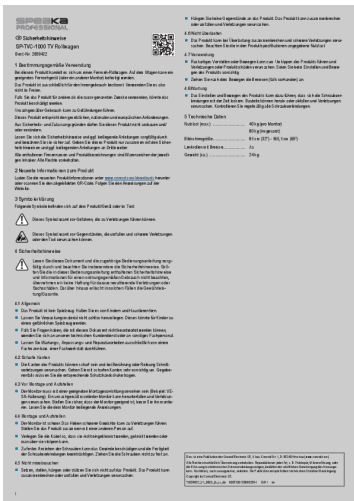
|||

Installationsanleitung **SP-TVC-1000** TV Rollwagen Best.-Nr. 2859422

PLieaferrutmflAnigst : A B C D E F G H I J K L 1 1 1 1 1 2 2 4 1 MM55xx110 0mmm m
4 MM88xx116 6mmm m 10 MM88xx440 0mmm m 4 Dies ist eine Publikation der

Conrad Electronic SE, Klaus-Conrad-Str. 1, D-92240 Hirschau www...

lang:de **score:26** filesize: 3.47 M page_count: 4 document date: 2023-06-29



[pdf] User Manual

2859422 V1 0623 02 SS 4L 2 CEI HK %product title% Conrad Electronic Schweiz bedienungsanleitung

speaka professional sp tvc 1000 tv rollwagen 813 cm 32 1651 65 neigbar asset conrad media10 add

160267 c1 gl 002859422ML00 |||

Sicherheitshinweise **SP-TVC-1000** TV Rollwagen Best.-Nr. 2859422 1

Bestimmungsgeme Verwendung Bei diesem Produkt handelt es sich um einen
Fernseh-Rollwagen. Auf dem Wagen kann ein geeignetes Fernsehgerät oder ein
anderer Monitor befestigt werden. Das Produkt ist ausschließlich fr den Innengebrauch
bes...

lang:de **score:25** filesize: 109.99 K page_count: 4 document date: 2023-06-29



[pdf]

2859422 V1 0623 02 SS it 2 CEI HK %product title% Conrad Electronic Schweiz bedienungsanleitung
speaka professional sp tvc 1000 tv rollwagen 813 cm 32 1651 65 neigbar asset conrad media10 add
160267 c1 002859422ML01 |||

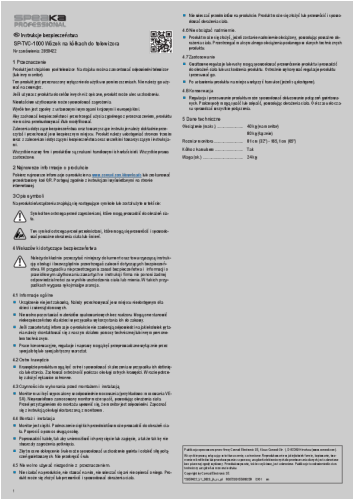
Istruzioni per la sicurezza **SP-TVC-1000** Carrello TV rotante N. d ordine: 2859422 1

Uso previsto Il presente prodotto un carrello porta TV. Sul carrello pu essere montata

una TV adatta o un altro monitor . Questo prodotto pensato unicamente per l uso

interno. Non usare in ambienti esterni. Qualora...

lang:it **score:23** filesize: 61.08 K page_count: 1 document date: 2023-06-29



[pdf]

2859422 V1 0623 02 SS pl 2 CEI HK %product title% Conrad Electronic Schweiz bedienungsanleitung
speaka professional sp tvc 1000 tv rollwagen 813 cm 32 1651 65 neigbar asset conrad media10 add
160267 c1 002859422ML02 |||

Instrukcje bezpieczeŝstwa **SP-TVC-1000** Wzkek na klkach do telewizora Nr zamwienia:

2859422 1 Przeznaczenie Produkt jest stojakiem pod telewizor. Na stojaku mona

zamontowa odpowiedni telewizor lub inny monitor . Ten produkt jest przeznaczony

wylcznie do uytku w pomieszczeniach. Nie naley go uywa na zew...

lang:pl **score:23** filesize: 64.05 K page_count: 1 document date: 2023-06-29