

## Manuals+

[Q & A](#) | [Deep Search](#) | [Upload](#)

[manuals.plus](#) /

› [ThruNite](#) /

› [ThruNite Ti Mini Keychain Flashlight User Manual - USB-C Rechargeable, 650 Lumens](#)

## ThruNite Ti

# ThruNite Ti Mini Keychain Flashlight User Manual

Model: ThruNite Ti

### 1. INTRODUCTION

Thank you for choosing the ThruNite Ti Mini Keychain Flashlight. This compact and powerful LED flashlight is designed for everyday carry, offering convenience and reliability in a small form factor. Featuring USB-C recharging, multiple lighting modes, and a magnetic tailcap, the ThruNite Ti is an essential tool for various situations, from daily tasks to outdoor adventures.



## 2. WHAT'S IN THE BOX

- ThruNite Ti Mini Keychain Flashlight
- USB-C Charging Cable
- Keyring
- Pocket Clip
- Spare Rubber Cover

## 3. PRODUCT OVERVIEW

The ThruNite Ti is engineered for ease of use and durability. Familiarize yourself with its components:

	
Ti	Ti Pro
 650 lumens (max.)	 1012 lumens (max.)
Output	Output
 105 meters (max.)	 127 meters (max.)
Distance	Distance
 51 hrs	 19 hrs
Run time	Run time
 2780 cd (max.)	 4050 cd (max.)
Intensity	Intensity
 ✓	 ✗
Memory Function	Memory Function
 USB-C Charging	 Battery charging
Charging mode	Charging mode

Image 2: Diagram illustrating the key components of the ThruNite Ti flashlight, including the switch button, charging indicator, keychain, USB-C charging interface, two-way clip, and high-performance LED.

- **High Performance LED:** Provides bright and efficient illumination.
- **Switch Button:** Controls power and mode selection.
- **Charging Indicator:** Displays battery status during charging.

- **USB-C Charging Interface:** For convenient and fast recharging.
- **Two-way Clip:** Allows for versatile attachment to pockets or hat brims.
- **Keychain:** For easy attachment to keys or bags.

## 4. SETUP

Before first use, ensure the battery is properly installed and fully charged.

1. **Battery Installation:** Unscrew the head of the flashlight to access the battery compartment. Insert the included 350mAh rechargeable battery with the positive (+) end facing towards the head. Screw the head back on securely.
2. **Initial Charge:** Connect the flashlight to a USB power source using the provided USB-C cable. The charging indicator will show red during charging and turn green when fully charged.
3. **Attach Clip/Keyring (Optional):** The two-way clip can be attached to the flashlight body for pocket carry or hat brim use. The keyring can be attached to the tailcap for keychain integration.

## 5. CHARGING INSTRUCTIONS

The ThruNite Ti features a built-in 350mAh rechargeable battery with a modern USB-C charging port for convenience.

### USB-C RECHARGEABLE

Built-in battery with smart charging indicator keeps you powered up.



Image 3: The ThruNite Ti flashlight connected to a USB-C charging cable, illustrating the LED indicator lights for battery charge levels.

- Connect the USB-C cable to the flashlight's charging port and to a USB power source (e.g., computer, wall adapter).
- The LED indicator will glow **red** while the battery is charging.
- The LED indicator will turn **green** once the battery is fully charged.
- The battery may become slightly warm during charging. This is normal.

## 6. OPERATING INSTRUCTIONS

---

The ThruNite Ti offers five lighting modes for various needs.

1. **Turn On/Off:** Press the side switch button once to turn the flashlight on or off.
2. **Change Modes:** When the flashlight is on, press and hold the side switch button to cycle through Firefly, Low, Medium, and High modes. Release the button to select the desired mode.
3. **Strobe Mode:** From any mode (on or off), triple-click the side switch button to activate Strobe mode. Press once to turn off or return to the previously used mode.
4. **Memory Function:** The flashlight will remember the last used mode (except Strobe) when turned off and back on.

Demonstration of brightness levels:

---

Video 1: Nightshot testing of the ThruNite Ti flashlight, demonstrating its various brightness levels in an outdoor setting.

## 7. KEY FEATURES

---

- **Powerful Output:** Delivers up to 650 lumens with a 105-meter beam distance.
- **Magnetic Tailcap:** Allows for hands-free attachment to metal surfaces.

# HANDS-FREE LIGHTING ANYWHERE

Attach it to metal surfaces for hands-free use.

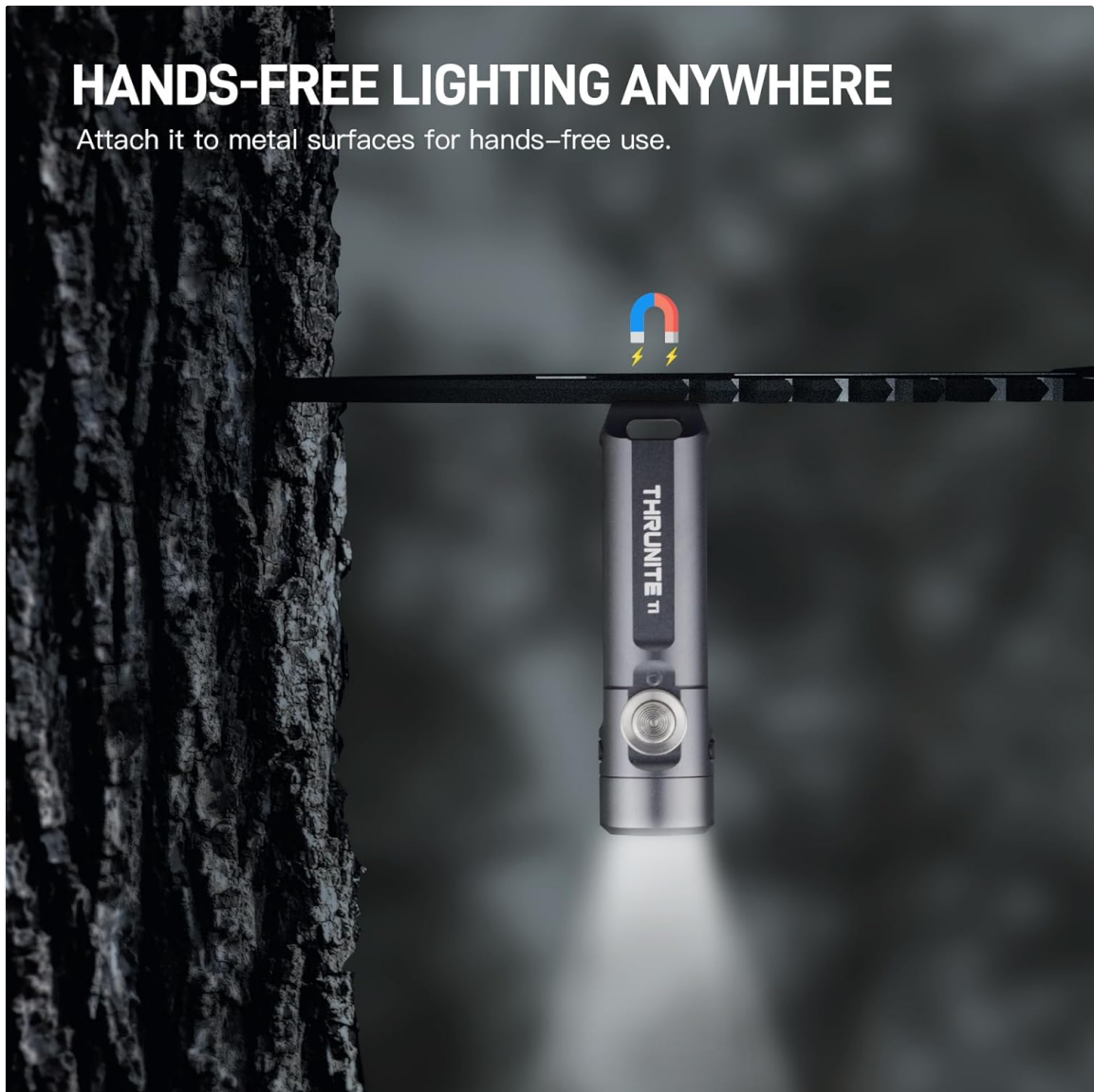


Image 4: The ThruNite Ti flashlight magnetically attached to a metal surface, demonstrating its hands-free lighting capability.

- **Ultra-Compact Design:** Measures just 60.8mm in length and weighs 26.5g, making it ideal for everyday carry.

## SLIM, COMPACT, KEYCHAIN SIZE

Just 60.8mm long and only 26.5g, this ultra-portable light fits easily in your pocket or hand, perfect for everyday carry without the bulk.

  
Weight  
**26.5g / 0.93oz**



Image 5: The ThruNite Ti flashlight with its compact dimensions (60.8mm length, 26.5g weight) highlighted.

- **Durable Construction:** Crafted from 6061-T6 aluminum with a Type III hard-anodized finish, offering IPX-8 waterproof rating and 1.5-meter impact resistance.
- **Versatile Carry:** Includes a two-way clip for pocket or hat brim attachment and a keyring for keys.



# PERFECT EDC COMPANION

Clip it to your keychain or pocket using the included keyring and clip.

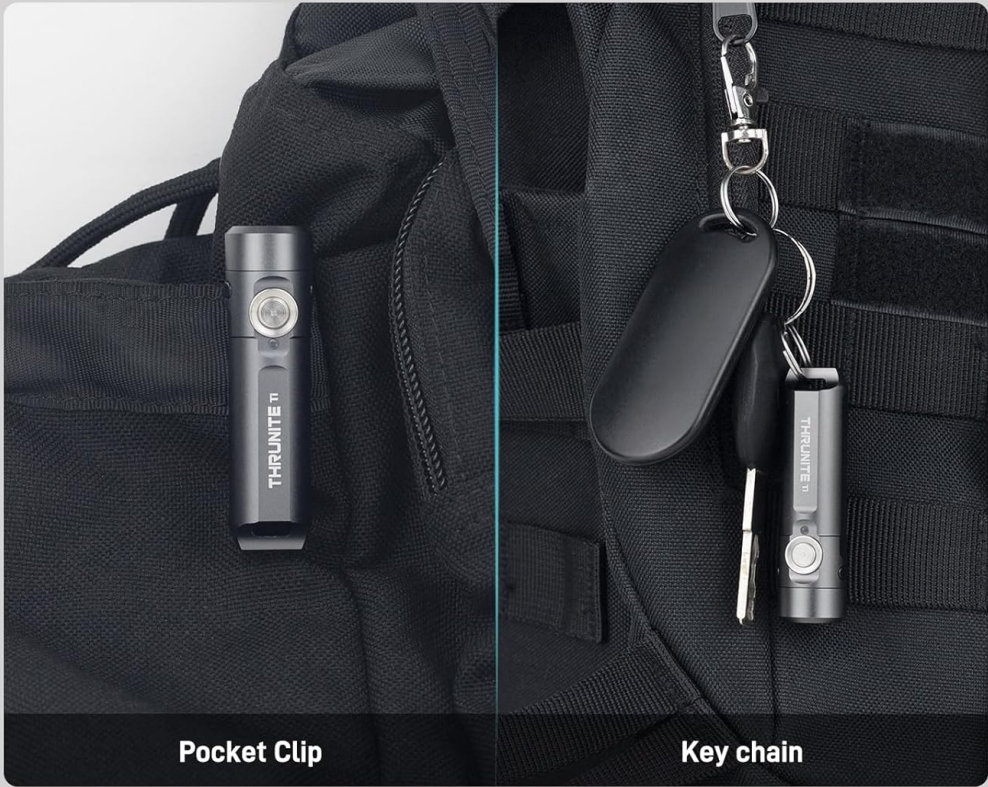


Image 6: The ThruNite Ti flashlight shown attached to a pocket via its clip and to a keychain, illustrating its versatility for everyday carry.

## 8. SPECIFICATIONS

Model	ThruNite Ti
Max Output	650 Lumens
Max Beam Distance	105 Meters
Battery Type	350mAh USB-C Rechargeable (Lithium Ion)
Charging	USB-C
Material	6061-T6 Aluminum Alloy
Finish	Type III Hard-Anodized
Water Resistance	IPX-8 (Submersible up to 2 meters)
Impact Resistance	1.5 Meters
Dimensions (L x D)	60.8mm x 16.5mm (2.39" x 0.65")

Weight	26.5g (0.93oz)
--------	----------------

# Compact Power That Fits in Your Pocket

MODE	OUTPUT	RUNTIME
High	650 lumens	1 hr 35 mins
Medium	200 lumens	2 hrs 20 mins
Low	30 lumens	9.5 hrs
Firefly	0.2 lumens	51 hrs
Strobe	650 lumens	—

WATERPROOF



IMPACT RESISTANCE



Image 7: A table detailing the ThruNite Ti's performance modes (High, Medium, Low, Firefly, Strobe) with their respective outputs and runtimes, along with its IPX-6 waterproof rating and 1.5-meter impact resistance.

## 9. MAINTENANCE

- **Cleaning:** Clean the flashlight body with a soft, damp cloth. Do not use harsh chemicals or abrasive materials.
- **O-rings:** Periodically check and lubricate the O-rings with silicone grease to maintain water resistance. Replace worn O-rings as needed.
- **Threads:** Keep the threads clean and lightly lubricated to ensure smooth operation when unscrewing the head.
- **Battery Care:** Store the flashlight with a partially charged battery if not used for extended periods. Avoid fully discharging the battery.

## 10. TROUBLESHOOTING

If you encounter issues with your ThruNite Ti flashlight, please refer to the following common solutions:



- **Flashlight does not turn on:**

- Ensure the battery is correctly inserted with the positive (+) end facing the head.
- Check if the battery is charged. Connect to a USB-C charger and observe the indicator light.
- Tighten the flashlight head and tailcap completely. Loose connections can prevent operation.

- **Light output is dim or flickers:**

- The battery may be low. Recharge the battery fully.
- Clean the battery contacts and the flashlight's internal contacts with a cotton swab dipped in rubbing alcohol.

- **Charging indicator does not light up:**

- Ensure the USB-C cable is securely connected to both the flashlight and the power source.
- Try a different USB-C cable or power adapter.

If these steps do not resolve the issue, please contact ThruNite customer support.

## **11. WARRANTY AND SUPPORT**

---

The ThruNite Ti Mini Keychain Flashlight comes with a limited warranty. For detailed warranty information, product support, or service inquiries, please refer to the official ThruNite website or contact their customer service directly. Keep your purchase receipt for warranty claims.