

[Manuals.plus](#) /

> [Mould King](#) /

> Mould King 17007 Technology Crane Building Set User Manual

Mould King 17007

Mould King 17007 Technology Crane Building Set User Manual

Model: 17007 | Brand: Mould King

INTRODUCTION

This user manual provides comprehensive instructions for the assembly, operation, and maintenance of the Mould King 17007 Technology Crane Building Set. This advanced building kit features 8506 pieces, allowing for the construction of a highly detailed and functional heavy crane truck with APP programmable control.

WHAT'S IN THE BOX

- Instruction Manual
- 8506 Building Block Pieces
- 20 Motors
- 3 Lithium Battery Boxes
- Required Cables and Connectors

ASSEMBLY

The Mould King 17007 is a complex building set designed for experienced builders. Detailed step-by-step instructions are provided in the included physical instruction manual. Please follow these instructions carefully to ensure correct assembly and functionality.

Key assembly features include:

- Construction of the multi-axle heavy crane truck chassis.
- Integration of 20 motors and 3 battery boxes for powered functions.
- Assembly of the three-stage extendable jib and main boom.
- Installation of pneumatic outriggers and rotating upper structure.



Image: The Mould King 17007 crane building set, showing both the product packaging and the fully assembled crane truck. This provides an overview of the final product and its scale.



Image: The assembled Mould King 17007 crane with its main boom fully extended and raised, demonstrating its operational height and reach in a construction site setting.

SETUP AND APP CONNECTION

The Mould King 17007 crane is controlled via a dedicated mobile application. Follow these steps to connect your device and prepare for operation:

1. Scan the QR code provided in the physical manual or on the product packaging to download the official Mould King APP (MK+).
2. Ensure Bluetooth is enabled on your mobile device.
3. Open the Mould King APP and select "Manually select device".
4. Tap on the corresponding product model (17007 or 17008 if applicable) within the app to initiate connection.
5. Activate each motor module (1, 2, and 3) by pressing their respective buttons as prompted by the APP to establish a connection.
6. Before starting operations, ensure all axes of the crane are in their initial state as indicated in the APP, then click OK.

Your browser does not support the video tag.

Video: An official operation tutorial demonstrating the APP connection process and various crane functions. This video guides users through connecting the crane's motors to the mobile application and initializing the controls.

OPERATING INSTRUCTIONS

The Mould King 17007 crane offers a wide range of functions controlled via the APP. Familiarize yourself with the control interface for precise operation.

Driving Functions:

- **Forward/Backward:** Use the designated controls in the APP to move the crane truck.
- **Turn Left/Right:** Steer the crane using the directional controls.
- **Leg Extension (Outriggers):** Use the "Leg Extension" controls to deploy or retract the outriggers for stability.
- **Standing Hoe Lift:** Control the vertical movement of the standing hoes (stabilizers).

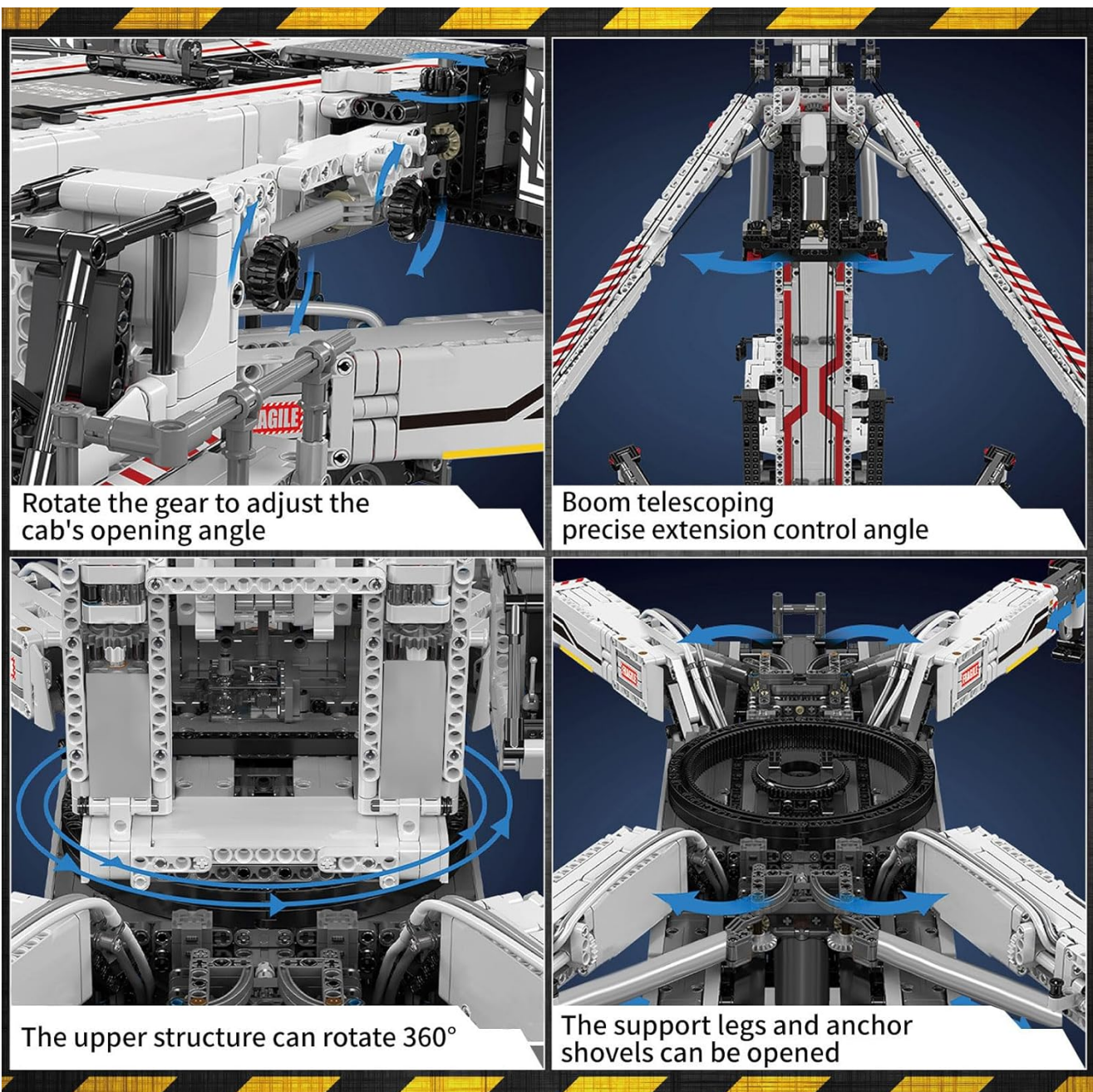


Image: A composite image detailing various functional aspects of the Mould King 17007 crane, including cab rotation, boom telescoping, 360-degree upper structure rotation, and outrigger deployment.

Crane Arm and Hook Operations:

- **Main Boom Rise/Descend:** Control the primary lifting arm's vertical movement. The three-stage jib can extend and unfold, allowing lifting heights up to 160cm.
- **Fly Arm Rise/Descend:** Operate the secondary, smaller arm for additional reach and precision.
- **Lifting Hook Descend/Ascend:** Control the cable and hook for lifting and lowering objects. Ensure the cable length is adjusted correctly.
- **Upper Rotation:** Rotate the entire upper structure of the crane 360 degrees for versatile positioning.
- **Cab Adjustment:** Rotating gears allow adjustment of the cab deployment angle.
- **Pneumatic Outriggers:** Utilize the one-touch pneumatic switch for free retraction and extension of the outriggers.



Image: The Mould King 17007 crane model with its boom significantly raised, displayed on a workbench, highlighting its impressive height capability.

PRODUCT SIZE

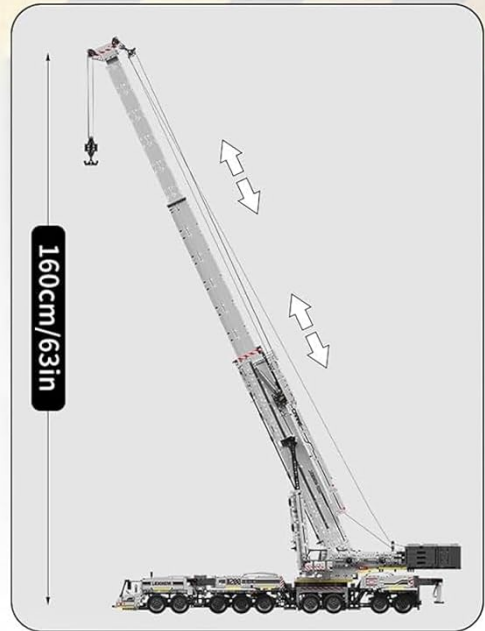


Image: A diagram illustrating the product dimensions of the Mould King 17007 crane, including its length (121cm/47.6in), width (50.7cm/20in), and maximum lifting height (160cm/63in).



Image: The Mould King 17007 crane model resting on a wooden table, with a person blurred in the background, suggesting the scale and the detailed nature of the building set.

MAINTENANCE

To ensure the longevity and optimal performance of your Mould King 17007 crane, follow these maintenance guidelines:

- **Cleaning:** Use a soft, dry cloth to gently wipe down the building blocks. Avoid using harsh chemicals or abrasive materials.
- **Storage:** Store the assembled model or disassembled pieces in a cool, dry place away from direct sunlight and extreme temperatures to prevent warping or discoloration.
- **Battery Care:** When not in use for extended periods, remove the Lithium Ion batteries from the battery boxes to prevent leakage and damage.
- **Motor and Cable Inspection:** Periodically check all motor connections and cables for any signs of wear or damage. Ensure cables are not pinched or excessively bent.

TROUBLESHOOTING

Problem	Possible Cause	Solution
APP fails to connect to the crane.	Bluetooth is off, motors not activated, or incorrect model selected.	Ensure Bluetooth is on. Press the power button on each motor module. Verify you have selected model 17007 in the APP. Restart the APP and the crane.
Crane functions (e.g., boom, outriggers) are not responding or are weak.	Low battery, loose motor connection, or mechanical obstruction.	Check battery levels and replace/recharge if necessary. Ensure all motor cables are securely connected. Inspect for any pieces obstructing movement.
Gears or mechanical parts slip.	Incorrect assembly or excessive load.	Review the assembly manual for the specific section where slippage occurs to ensure correct part placement. Avoid placing excessive load on the crane.
Crane does not move forward/backward or turn.	Driving motors not connected or initial axis state not set.	Confirm all driving motors are connected and activated in the APP. Ensure you have moved all axes to their initial state and clicked OK in the APP.

SPECIFICATIONS

- **Model Number:** 17007
- **Brand:** Mould King
- **Number of Pieces:** 8506
- **Power Source:** 3 Lithium Battery Boxes (1 included)
- **Control:** APP Programmable (Mould King Hall motor module)
- **Dimensions (Assembled):**
 - Length: Approximately 121 cm (47.6 inches)
 - Width: Approximately 50.7 cm (20 inches)
 - Max Lifting Height: Approximately 160 cm (63 inches)
- **Item Weight:** 31.7 pounds
- **Recommended Age:** 8 years and up
- **Material:** High-quality ABS plastic

WARRANTY AND SUPPORT

Mould King products are designed for quality and durability. If you encounter any problems or require assistance with your Mould King 17007 Technology Crane Building Set, please contact Mould King customer service. Our friendly customer service professionals are always standing by to help.

For further support, visit the official Mould King Store on Amazon: [Mould King Store](#)