

## BEBEN T12 NEW Blue

# BEBEN Wireless Earbuds User Manual

Model: T12 NEW Blue

### INTRODUCTION

Thank you for choosing BEBEN Wireless Earbuds. This manual provides detailed instructions on how to set up, operate, maintain, and troubleshoot your new earbuds. Designed for convenience and high-quality audio, these earbuds feature Bluetooth 5.3 for stable connections, IPX6 water resistance, and intuitive touch controls. Please read this manual thoroughly to ensure optimal performance and longevity of your device.

### WHAT'S IN THE BOX

- BEBEN Wireless Earbuds (Left and Right)
- Charging Case
- USB-C Charging Cable
- User Manual

### PRODUCT OVERVIEW





Image: The BEBEN Wireless Earbuds, blue in color, resting inside their matching blue charging case. The case is open, revealing the earbuds and their charging contacts.

The BEBEN Wireless Earbuds consist of two individual earbuds and a portable charging case. The earbuds are designed for a comfortable, semi-linear fit and feature touch-sensitive surfaces for control. The charging case not only protects the earbuds but also provides extended battery life on the go.

## SETUP

### Charging the Earbuds and Case

Before first use, fully charge the earbuds and the charging case. Connect the provided USB-C cable to the charging port on the case and plug the other end into a USB power source (e.g., wall adapter, computer USB port). The indicator lights on the case will show the charging status. A full charge takes approximately 1.5 hours for both the earbuds and the case. Once fully charged, the earbuds provide up to 8 hours of continuous playtime, with the charging case offering an additional 32 hours, totaling 40 hours of playtime.



Image: A graphic depicting the BEBEN Wireless Earbuds and charging case, highlighting '40 H Superior Playtime' with '8h Continuous playtime' and 'Extra 32h from charging case'.

### Pairing with Your Device

1. Ensure the earbuds are charged.
2. Open the charging case. The earbuds will automatically enter pairing mode, and their indicator lights will flash.

3. On your smartphone, tablet, or other Bluetooth-enabled device, go to the Bluetooth settings.
4. Search for new devices and select "T12" (or similar name) from the list of available devices.
5. Once connected, the earbud indicator lights will turn off, and your device will confirm the connection.

Thanks to Bluetooth 5.3 technology, after the initial pairing, the earbuds will automatically connect to your device when you open the charging case, provided Bluetooth is enabled on your device.

## One-Step Auto Pairing

*After first pairing, earbuds auto pair with your phone while opening the case*

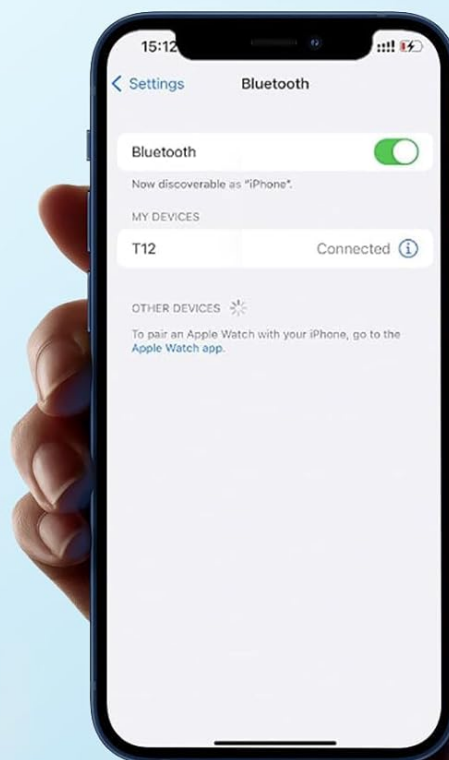


Image: A graphic illustrating the one-step auto pairing feature, showing a hand holding a smartphone with Bluetooth settings open, connected to 'T12', and the earbuds in their open charging case.

## OPERATING

### Multifunction Button (MFB) Controls

The BEBEN Wireless Earbuds feature intuitive touch controls on the Multifunction Button (MFB) area of each earbud. Refer to the table below for common operations:



Action	Control
Play / Pause Music	One Press MFB of either earbud
Volume -	Click Left Control Button 3 Times
Volume +	Click Right Control Button 3 Times
Previous Song	Long Press MFB of Left earbud
Next Song	Long Press MFB of Right earbud
Pick up / Hang up Phone Call	One Press MFB once of either earbud
Decline Incoming Call	Long Press MFB for 2 seconds of either earbud

# Multi-Function Operations



Answer Call



End Call



Reject Call



Play/Pause Music



Next/Last Track



Volume+/-



Voice Assistance Siri



Image: A graphic showing various touch control icons for the earbuds, including Answer Call, End Call, Reject Call, Play/Pause Music,

## Single and Binaural Mode

These wireless earbuds are not limited to a main earbud, allowing you to use either the left or right earbud independently. You can switch to using a single earbud and enjoy the same operations and functions. This feature is useful for comfort or in environments where awareness of background sounds is required. You can also share music or movies by using one earbud each with a friend or family member.

## MAINTENANCE

---

### Cleaning

Regularly clean your earbuds and charging case to ensure optimal performance and hygiene. Use a soft, dry, lint-free cloth to wipe down the surfaces. For stubborn dirt, slightly dampen the cloth with water. Do not use abrasive cleaners or solvents. Gently clean the charging contacts on both the earbuds and the case with a dry cotton swab.

### Storage

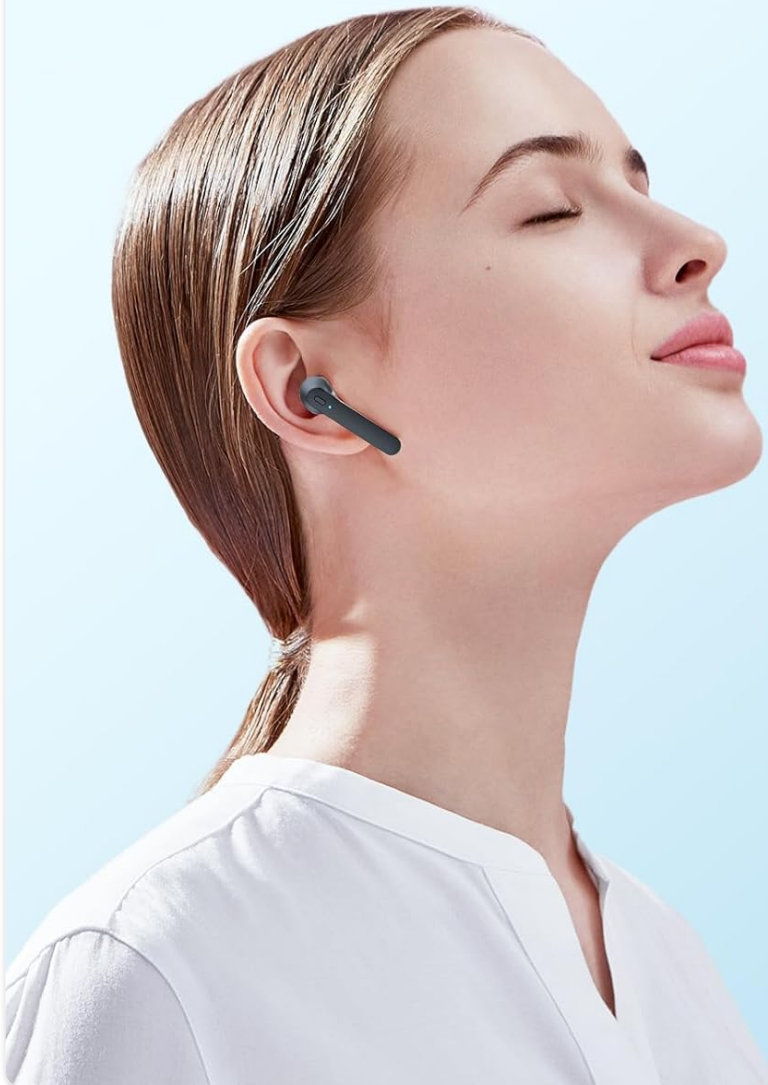
When not in use, always store the earbuds in their charging case to protect them from dust, dirt, and physical damage. Store the case in a cool, dry place away from direct sunlight and extreme temperatures.

### Water Resistance (IPX6)

The earbuds are IPX6 water-resistant, meaning they can withstand powerful water jets. This makes them suitable for sports and fitness activities where sweat or light rain might be encountered. However, they are not designed for submersion in water (e.g., swimming or showering). Ensure the earbuds are dry before placing them back into the charging case to prevent damage.

# Lightweight and Comfortable

*All these make it ultra comfortable for wearing, No hurt for your ears.*



**4.8<sub>g</sub>**  
**Lightweight**

Image: A woman wearing a single BEBEN Wireless Earbud, with text indicating '4.8g Lightweight', emphasizing the comfort and suitability for active use.

## TROUBLESHOOTING

---

### Resetting the Earbuds

If your earbuds are unable to pair with each other or cannot connect to your device, a reset may resolve the issue. Follow these steps:

1. Delete the earbuds' device name (e.g., "T12") from the Bluetooth list on your phone or device.
2. Take both earbuds out of the charging case and turn them off. (Refer to the 'Turn off - Method 2' in the original user manual if available, otherwise, typically long-press MFB until lights indicate off).
3. Long press the MFB of both earbuds for 15 seconds until you see orange and white lights flashing for 1 second, then the earbuds will turn off automatically.
4. After 2 seconds, turn on both earbuds (typically by long-pressing MFB or placing them back in the case and taking

them out).

- 5. Double press the MFB of both earbuds. The two earbuds will attempt to connect to each other. After successful connection, both LED lights will flicker alternately with orange and white lights.
- 6. After the reset, reconnect the earbuds to your device by following the 'Pairing with Your Device' steps in this manual.

Common Issues

- **Earbuds not charging:** Ensure the charging cable is securely connected and the power source is active. Clean the charging contacts on both earbuds and case.
- **No sound from one earbud:** Try resetting the earbuds as described above. Ensure both earbuds are sufficiently charged.
- **Connection drops frequently:** Ensure you are within the 10-meter Bluetooth range. Avoid obstacles between the earbuds and your device.

SPECIFICATIONS

Feature	Specification
Brand	BEBEN
Model Number	T12 NEW Blue
Bluetooth Version	5.3
Bluetooth Range	10 Meters
Battery Life (Earbuds)	8 Hours (Continuous Playtime)
Total Playtime (with Case)	40 Hours
Charging Time (Earbuds & Case)	1.5 Hours
Charging Interface	USB-C
Water Resistance Level	IPX6
Control Type	Touch Control
Audio Driver Type	Dynamic Driver
Frequency Range	20 Hz - 20,000 Hz
Impedance	16 Ohm
Earpiece Shape	Semi-linear
Compatible Devices	Cellphones, Tablets, Laptops, Desktops
Product Dimensions	2.37 x 1.95 x 1.02 inches
Item Weight	3.2 ounces



Feature	Specification
Carrying Case Weight	30 Grams
Carrying Case Material	Plastic
Color	Blue

## WARRANTY AND SUPPORT





### Warranty Information

BEBEN products are manufactured to the highest quality standards. For specific warranty details regarding your BEBEN Wireless Earbuds, please refer to the warranty card included in your product packaging or visit the official BEBEN website. Keep your purchase receipt as proof of purchase for any warranty claims.

### Customer Support

If you encounter any issues or have questions not covered in this manual, please contact BEBEN customer support. You can typically find contact information (email, phone, or support portal) on the BEBEN official website or through the retailer where you purchased the product. Please have your model number (T12 NEW Blue) and purchase details ready when contacting support.

### Related Documents - T12 NEW Blue

	<p><a href="#">TOZO T12 Pro True Wireless Stereo Earbuds Quick Guide</a></p> <p>A quick guide for the TOZO T12 Pro True Wireless Stereo Earbuds, covering how to wear, pair, and control functions like play/pause, volume, and calls. Learn about auto pairing, clearing the pairing list, and resetting your earbuds.</p>
	<p><a href="#">T12 True Wireless Stereo Earbuds User Manual</a></p> <p>Official user manual for the T12 True Wireless Stereo Earbuds, covering setup, operation, charging, troubleshooting, and safety guidelines.</p>
	<p><a href="#">TOZO T12 Pro Earbuds: Quick Start Guide &amp; Pairing Instructions</a></p> <p>Get started with your TOZO T12 Pro Hi-Fi stereo sound quality earbuds. This guide covers wearing, pairing, and basic controls for a seamless audio experience.</p>
	<p><a href="#">T12 Pro Wireless Earbuds User Manual</a></p> <p>Comprehensive user manual for the T12 Pro wireless earbuds, covering setup, features, usage instructions, product specifications, and safety information. Learn how to pair, charge, and operate your T12 Pro earbuds effectively.</p>



### [TOZO T12 True Wireless Stereo Earbuds Quick Guide](#)

Learn how to pair, wear, reset, charge, and control your TOZO T12 True Wireless Stereo Earbuds with this comprehensive quick guide. Includes touch control functions and power management for optimal use.



### [TOZO T12 Pro Hi-Fi Stereo Earbuds Quick Start Guide](#)

This quick start guide provides instructions for wearing, pairing, and controlling the TOZO T12 Pro Hi-Fi stereo earbuds, including power management, call handling, music playback, volume adjustment, and voice assistant activation.