

- › [Backyard Discovery](#) /
- › [Backyard Discovery Fusion Flame Outdoor Kitchen User Manual](#)

Backyard Discovery 2304079

Backyard Discovery Fusion Flame Outdoor Kitchen User Manual

Brand: Backyard Discovery | Model: Fusion Flame Outdoor Kitchen (2304079)

INTRODUCTION AND OVERVIEW

The Backyard Discovery Fusion Flame Outdoor Kitchen is designed to bring family and friends together for delicious homemade meals. This robust outdoor kitchen is constructed from powder-coated galvanized steel with a full coverage roof, ensuring year-round usability in various weather conditions.

It features a 304 stainless steel 5-burner propane grill, an outdoor-rated refrigerator, expansive food-grade stainless steel countertops, and integrated storage solutions. The patented PowerPort provides convenient electrical outlets and USB ports for all your outdoor cooking needs.



Image: The complete Fusion Flame Outdoor Kitchen setup.

PRODUCT FEATURES

- **All-Weather Durability:** Pro-Tect tested and proven to withstand up to 2,100 pounds or 30 inches of snow load, and winds up to 100 mph with a full coverage galvanized steel roof.
- **Premium Construction:** Made from 100% black powder-coated galvanized steel for corrosion resistance and lasting durability, complemented by wood grain accents for a stylish aesthetic.
- **Stainless Steel Countertops:** Over 6 feet of food-grade stainless steel countertops provide 13.3 square feet of generous space for food preparation and cooking.
- **Professional-Grade Grill:** A 38-inch 5-burner 304 stainless steel grill with 846 total square inches of cook space, warming rack, flame tamers, sear zone, and infrared rotisserie. Delivers 72,000 BTUs of power and includes a weatherproof cover.
- **Outdoor-Rated Refrigerator:** 304 stainless steel construction designed to withstand temperatures over 100°F. Features a 23-inch design, LED interior light, and single-zone 3-layer storage offering 5.3 cubic feet of space for up to 180 cans.
- **Integrated Storage:** Includes a utensil drawer and spacious cabinet with adjustable shelving and soft-close hardware to keep cooking essentials organized and accessible.
- **Hidden Trash Stash:** A 15-inch soft-close trash bin with an easy-stow design that slides away discreetly, holding up to 7 gallons with a 100-pound capacity.
- **Powered Up:** Patented PowerPort features 3 electrical outlets and 3 USB ports to conveniently power blenders,

lighting, devices, and more. Mounts easily to any post on the structure (power source not included).

- **Ready to Assemble:** Pre-fabricated, pre-drilled, and powder-coated pieces, combined with guided instructions in the interactive BILT app, offer easy installation.



Image: Key features of the Fusion Flame Outdoor Kitchen, including storage and countertop space.



Image: Detailed view of the professional-grade grill features.



Image: Features of the outdoor-rated refrigerator.



Image: Details of the hidden trash bin.

SETUP & ASSEMBLY

The Fusion Flame Outdoor Kitchen is designed for straightforward assembly. All pieces are pre-fabricated, pre-drilled, and powder-coated to simplify the process.

Recommended Assembly Process:

1. **Site Preparation:** Choose a level, stable surface for installation. Ensure adequate clearance around the unit for safe operation and maintenance.
2. **Unpacking:** Carefully unpack all boxes and lay out components. Verify all parts are present against the packing list. Note that some boxes may be very heavy (total unit weight is 1061 pounds), so plan for assistance.
3. **BILT App Guidance:** For the most detailed and interactive assembly instructions, download and utilize the BILT app. This app provides step-by-step 3D animated guides.
4. **Structural Assembly:** Begin with the main frame and roof structure. Ensure all connections are secure before proceeding.

5. **Component Installation:** Install the grill, refrigerator, countertops, and storage cabinets according to the instructions.
6. **Electrical Connections:** Install the PowerPort and ensure it is connected to a suitable outdoor power source (not included).
7. **Final Checks:** Before first use, double-check all connections, gas lines (if applicable), and electrical wiring for safety.

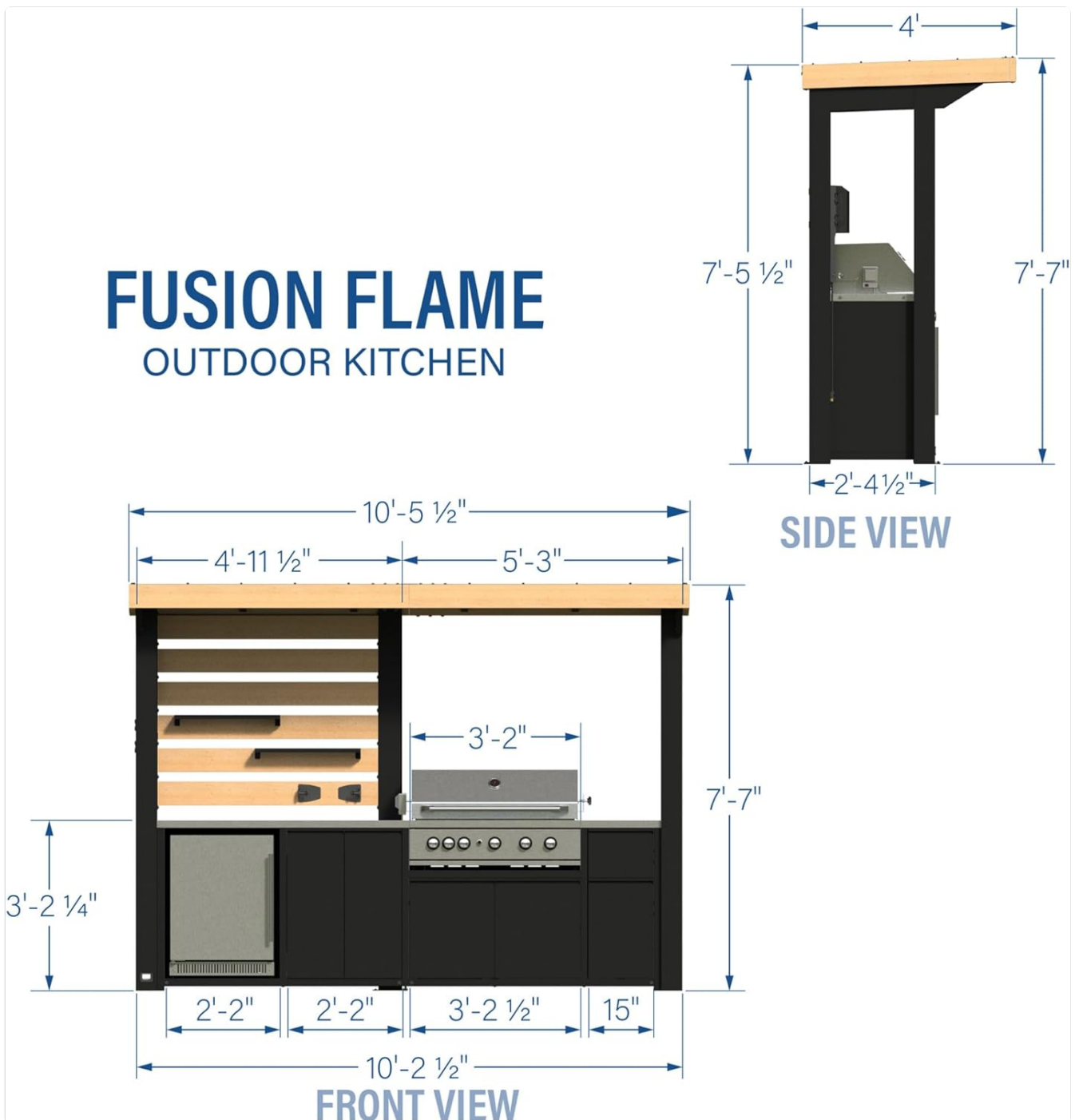


Image: Dimensions of the Fusion Flame Outdoor Kitchen.



Image: Pro-Tect durability testing for snow load and wind resistance.

OPERATING INSTRUCTIONS

Grill Operation:

The 5-burner propane grill offers versatile cooking options. Ensure the propane tank is securely connected and the gas line is free of leaks before operation.

- **Main Burners:** Turn a control knob to the HIGH position and press the igniter button to light. Adjust heat as needed.
- **Sear Zone:** Use the dedicated sear burner for high-heat searing to lock in flavors.
- **Infrared Rotisserie:** Ideal for slow-roasting meats. Secure the rotisserie spit with your food, position it over the infrared back burner, and activate the rotisserie motor.
- **Warming Rack:** Utilize the upper warming rack to keep cooked food warm or for indirect cooking.

Refrigerator Use:

The outdoor-rated refrigerator is designed to keep beverages and ingredients cool even in high temperatures.

- **Temperature Control:** Adjust the internal thermostat to your desired cooling level.
- **Storage:** Utilize the 3-layer storage system for efficient organization of up to 180 cans or various food items.
- **LED Interior Light:** The internal LED light illuminates the contents for easy visibility.

PowerPort Functionality:

The patented PowerPort provides convenient access to electrical power for your outdoor appliances and devices.

- **Outlets:** Features 3 standard electrical outlets for blenders, portable lights, or other kitchen appliances.
- **USB Ports:** Includes 3 USB ports for charging mobile phones, tablets, or other USB-powered devices.
- **Weather Protection:** Ensure the protective cover is closed when not in use to shield outlets from weather elements.



Image: The PowerPort with electrical and USB outlets.

Official Product Video:

Your browser does not support the video tag.

Video: An official overview of the Fusion Flame Outdoor Kitchen, showcasing its features and functionality.

MAINTENANCE & CARE

Regular maintenance will ensure the longevity and optimal performance of your Fusion Flame Outdoor Kitchen.

- **Stainless Steel Surfaces:** Clean countertops and grill exterior with a mild soap and water solution. For stubborn stains, use a stainless steel cleaner. Always wipe in the direction of the grain.
- **Grill Grates:** After each use, brush off food residue from the grill grates. Periodically, remove and wash grates with warm soapy water.
- **Refrigerator:** Wipe down the interior and exterior of the refrigerator regularly. Defrost if ice buildup occurs. Ensure the ventilation grilles are clear of debris.
- **Steel Roof & Frame:** Inspect the galvanized steel roof and powder-coated frame periodically for any signs of wear or damage. Clean with mild soap and water.
- **Storage Cabinets:** Keep cabinets clean and dry. Wipe spills immediately to prevent staining or damage to the interior.
- **Weather Protection:** While the unit is designed for all-weather use, using the included weatherproof grill cover when not in use can further extend its lifespan.

TROUBLESHOOTING

This section provides general guidance for common issues. For complex problems, refer to the BILT app or contact customer support.

Problem	Possible Cause	Solution
Grill not lighting	No gas flow, igniter issue, clogged burner	Check propane tank connection and level. Ensure gas valve is open. Clean igniter and burner ports.
Refrigerator not cooling	Power issue, thermostat setting, blocked vents	Verify PowerPort is active and refrigerator is plugged in. Adjust thermostat. Clear any obstructions from vents.
PowerPort not working	No external power, tripped breaker, internal fault	Ensure external power source is active. Check household breaker. If problem persists, contact support.
Drawers/doors not closing smoothly	Obstruction, misaligned hardware	Check for items blocking closure. Inspect soft-close hardware for damage or misalignment.

SPECIFICATIONS

Attribute	Detail
Brand	Backyard Discovery
Model Name	Fusion Flame Outdoor Kitchen
Model Number	2304079

Attribute	Detail
Product Dimensions (D x W x H)	48"D x 125.5"W x 90.94"H
Item Weight	1061 pounds
Material	Powder-Coated Galvanized Steel, 304 Stainless Steel
Fuel Type (Grill)	Propane
Grill Burners	5
Grill BTU Output	72,000 BTUs
Cooking Surface Area	846 Square Inches
Countertop Space	13.3 Square Feet
Refrigerator Capacity	5.3 Cubic Feet (up to 180 cans)
PowerPort	3 Electrical Outlets, 3 USB Ports

WARRANTY INFORMATION

The Backyard Discovery Fusion Flame Outdoor Kitchen comes with an industry-leading **5-year warranty**. This warranty covers 100% of all parts, the structure, and appliances, providing total peace of mind for your investment.

For detailed warranty terms and conditions, please refer to the documentation included with your product or visit the official Backyard Discovery website.


SUPPORT & CONTACT

Should you require assistance with assembly, operation, maintenance, or troubleshooting, please utilize the following resources:

- **BILT App:** For interactive 3D assembly instructions and detailed guides.
- **Backyard Discovery Customer Service:** Refer to your product packaging or the official Backyard Discovery website for the most current contact information (phone numbers, email, support portals).
- **Online Resources:** Check the Backyard Discovery website for FAQs, product videos, and additional support materials.

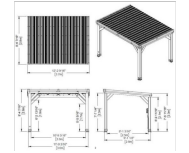
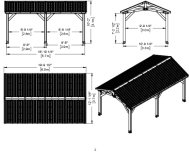



When contacting support, please have your model number (2304079) and proof of purchase readily available.

Related Documents - 2304079

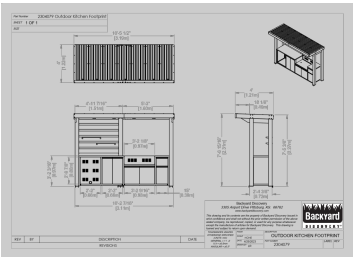


[Backyard Grill Outdoor 5 Burner Stainless Steel Gas Grill Assembly and Operation Manual](#)

Comprehensive guide for assembling, operating, and maintaining the Backyard Grill Outdoor 5 Burner Stainless Steel Gas Grill (Model BY16-101-003-01). Includes safety information, parts list, assembly steps, operating instructions, troubleshooting, and warranty details.

	<p>Arcadia Gazebo Owner's Manual: Basic Setup and Anchoring</p> <p>This manual provides essential setup dimensions, assembly notes, and anchoring layout details for the Arcadia 12 ft. x 9 ft. 6 in. Gazebo with Hard Top Steel Roof. It covers critical steps for ensuring a square and level foundation, proper hardware usage, and secure anchoring to various surfaces.</p>
	<p>Norwood Carport Pavilion Gazebo Assembly Guide</p> <p>Owner's manual for the Norwood 20 ft. x 12 ft. All Cedar Wooden Carport Pavilion Gazebo with Hard Top Steel Roof, detailing setup dimensions and anchoring layout.</p>
	<p>Purple Leaf 12'x20' Solarium Assembly Manual - Sunroom with Double Roof</p> <p>Official assembly manual for the Purple Leaf 12'x20' Solarium, a hardtop sunroom gazebo with a double roof. Includes care, cleaning, and warranty details.</p>
	<p>Backyard Discovery Saxony Grill Gazebo Assembly Manual</p> <p>Comprehensive owner's manual and assembly instructions for the Backyard Discovery Saxony Grill Gazebo (Model # 2104617). Includes parts identification, hardware lists, assembly steps, safety warnings, and maintenance tips.</p>
	<p>Expert Grill 720-0789GA Assembly Instructions</p> <p>Comprehensive assembly instructions for the Expert Grill 720-0789GA, detailing parts, hardware, and step-by-step assembly for outdoor use.</p>

Documents - Backyard Discovery – 2304079



[\[pdf\]](#) Dimension Guide Guide Label

OUTDOOR KITCHEN footprint BYL Iredd BYL0493 Backyard Discovery 2304079COM Dimensions Guide Fusion Flame Outdoor Kitchen 752113394070 65610138 lowes productdocuments 6d939c94 4add 44ff ad40 375a25724b0f |||

Part Number **2304079** Outdoor Kitchen Footprint SHEET 1 OF 1 SIZE 10 -5 1/2 3.19m 4 1.22m REV BY 3 -2 3/16 0.97m 2 -9 7/8 0.86m 4 -11 7/16 1.51m 5 -3 1.60m 3 -2 1/8 0.97m 4 1.21m 18 1/8 0.46m 7 -6 15/16 2.31m 7 -5 3/8 2.27m 2 -2 0.66m 2 -2 0.66m 3 ...

lang:en score:43 filesize: 223.96 K page_count: 1 document date: 2023-05-23



[\[pdf\]](#) User Manual Owner's Manual Installation Guide Instructions Dimension Guide

Backyard Discovery 2304079COM Installation Manual Fusion Flame Outdoor Kitchen 752113394070

65610140 lowes productdocuments e0f0d80e 416b 4613 91d1 8c5cf52d2ee4 |||

Manufactured by: Backyard Discovery 3305 Airport Drive, Pittsburg, KS 66762 800-856-4445 Basepoint Business Centre: Rivermead Drive,Westlea, Swindon SN5 7EX Phone: 0800-118-2476 J.P. Coenstraat 7, The Bridge, The Hague, 2595 WP, Netherlands Phone: 08005678990 FUSION FLAME OUTDOOR KITCHEN MODEL # : 2...

lang:en score:32 filesize: 73.77 M page_count: 170 document date: 2023-10-24



[\[pdf\]](#) User Manual Owner's Manual Installation Guide Instructions Dimension Guide

EnglishFusion Flame Outdoor KitchenINS 2304079 A FUSION FLAME OUTDOOR KITCHEN ENG 02 13

24backyarddiscovery sirv INS 24 |||

Manufactured by: Backyard Discovery 3305 Airport Drive, Pittsburg, KS 66762 800-856-4445 Basepoint Business Centre: Rivermead Drive,Westlea, Swindon SN5 7EX Phone: 0800-118-2476 J.P. Coenstraat 7, The Bridge, The Hague, 2595 WP, Netherlands Phone: 08005678990 FUSION FLAME OUTDOOR KITCHEN MODEL # : 2...

lang:en score:29 filesize: 15.53 M page_count: 138 document date: 2024-07-16



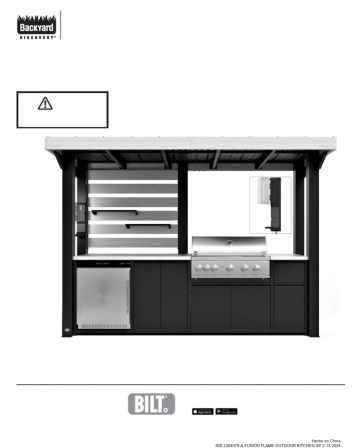
[\[pdf\]](#) Dimension Guide

FrenchFusion Flame Outdoor KitchenINS 2304079 A FUSION FLAME OUTDOOR KITCHEN FR 02 13

24backyarddiscovery sirv INS 24 |||

Fabriqu par : Backyard Discovery 3305 Airport Drive, Pittsburg, KS 66762 800-856-4445 Basepoint Business Centre: Rivermead Drive,Westlea, Swindon SN5 7EX Phone: 0800-118-2476 J.P. Coenstraat 7, The Bridge, The Hague, 2595 WP, Netherlands Phone: 08005678990 FUSION FLAME OUTDOOR KITCHEN MODLE : no 230...

lang:fr score:17 filesize: 34.33 M page_count: 138 document date: 2024-07-16



[\[pdf\]](#) User Manual

Pablo Grande SpanishFusion Flame Outdoor KitchenINS 2304079 A FUSION FLAME OUTDOOR KITCHEN SP 02 13 24backyarddiscovery sirv INS 24 |||

Fabricado por: Backyard Discovery 3305 Airport Drive, Pittsburg, KS 66762 800-856-4445 Basepoint Bus ... Bridge, The Hague, 2595 WP, Netherlands Phone: 08005678990 COCINA EXTERIOR FUSION FLAME MODELO No. **2304079** ADVERTENCIA Cncr y dao reproductivo www.P65Warnings.ca.gov CARCASA ELCTRICA INCLUIDA Visite...

lang:es score:16 filesize: 10.3 M page_count: 138 document date: 2024-07-16

