



[Manuals.plus](#) /

› [AX WABER](#) /

› Universal Floor TV Stand Instruction Manual

## AX WABER AX1006TB

# Universal Floor TV Stand Instruction Manual

Model: AX1006TB | Brand: AX WABER

## 1. INTRODUCTION

Thank you for choosing the AX WABER Universal Floor TV Stand. This manual provides detailed instructions for the safe and proper assembly, operation, and maintenance of your new TV stand. Please read this manual thoroughly before beginning assembly and retain it for future reference.



Image: The AX WABER Universal Floor TV Stand, showcasing its sleek black design and sturdy base.

## 2. SAFETY INFORMATION

Always follow basic safety precautions when assembling and using this product to reduce the risk of injury or damage.

- Do not exceed the maximum weight capacity of 77 lbs (35 kg).
- Ensure the TV's VESA pattern is compatible (100x100mm to 400x400mm).
- Assemble the stand on a soft, clean surface to prevent scratches.
- Do not overtighten screws, as this may cause damage.
- Keep children and pets away during assembly.
- Always ensure the TV is securely mounted to the stand before use.
- Place the stand on a stable, level surface.



Image: Detail of the sturdy security TV lock, designed to conceal cords and prevent accidental falling.

## 3. PACKAGE CONTENTS

Verify that all parts are present and undamaged before beginning assembly. If any parts are missing or damaged, please contact customer support.



Image: The product packaging for the AX WABER TV Stand, model AX1006TB, indicating careful handling.

### Included Components:

- Tempered Glass Base
- Support Pillar
- TV Mounting Bracket
- VESA Adapter Plates
- Cable Management Clips
- Hardware Kit (various screws, washers, spacers)
- Installation Manual

## 4. SETUP AND ASSEMBLY

Follow these steps carefully to assemble your TV stand. It is recommended to have two people for certain steps, especially when mounting the TV.

### Step 1: Attach the Support Pillar to the Base

Secure the main support pillar to the tempered glass base using the provided screws. Ensure the pillar is aligned correctly with the pre-drilled holes on the base.

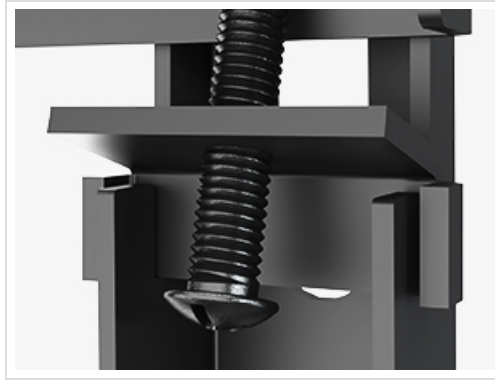


Image: A close-up view of the 10mm solid tempered glass base, highlighting its stability and safety features.

## **Step 2: Assemble the TV Mounting Bracket**

Attach the horizontal arms to the vertical support of the TV mounting bracket. Refer to the detailed diagram in the included manual for specific screw placements.

## **Step 3: Attach Mounting Bracket to TV**

Select the appropriate screws and spacers from the hardware kit that match your TV's VESA mounting holes. Secure the assembled mounting bracket to the back of your TV. Ensure a snug fit without overtightening.

## **Step 4: Mount TV onto the Stand**

Carefully lift the TV with the attached bracket and hook it onto the support pillar of the floor stand. Ensure the bracket securely engages with the pillar. Use the safety screws or clips to lock the TV in place, preventing accidental dislodgement.

# PLACE SPEAKER & TV CABINET



Image: The TV stand positioned alongside a TV cabinet and speaker, demonstrating its space-saving design and compatibility with existing furniture.

## Step 5: Cable Management

Utilize the integrated cable management clips along the support pillar to organize and conceal TV cables. This provides a clean and streamlined appearance.

# CABLE MANAGEMENT



Image: A rear view of the TV stand showing how cables are neatly routed and hidden using the integrated cable management system.

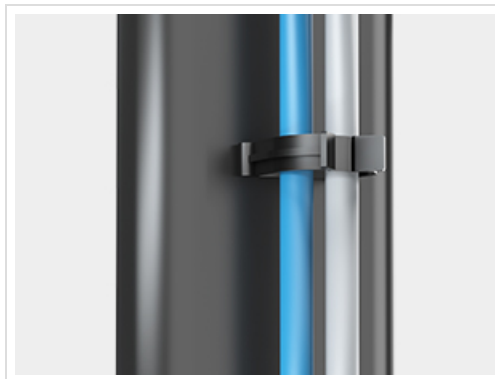


Image: A close-up of a cable management clip, illustrating how it helps hide wires for a streamlined look.

## 5. OPERATING INSTRUCTIONS

### Height Adjustment

The TV stand features 9 levels of height adjustment. To adjust the height, carefully loosen the securing bolts on the support pillar, slide the TV to the desired height, and then retighten the bolts securely. Ensure the TV is level after adjustment.



Image: A visual representation of the 9 levels of height adjustment, ranging from a minimum of 47.5 inches to a maximum of 59.3 inches.



Image: The TV stand demonstrating its height adjustment capability, allowing for optimal viewing angles.

## Swivel Function

The TV mount allows for a 70-degree swivel range (-35 to +35 degrees). Gently push the TV to the left or right to achieve your desired viewing angle. This feature is ideal for optimizing viewing from different positions in a room.



Image: An overhead perspective illustrating the 70-degree ultra-wide viewing angle provided by the swivel mount.



Image: The TV stand in a living space, showcasing its smooth swivel functionality for flexible viewing.

## 6. MAINTENANCE

To ensure the longevity and appearance of your TV stand, follow these simple maintenance guidelines:

- **Cleaning:** Use a soft, damp cloth to wipe down the metal and glass surfaces. Avoid abrasive cleaners or solvents that could damage the finish.
- **Inspection:** Periodically check all screws and connections to ensure they remain tight and secure. Retighten if necessary.
- **Glass Care:** For the tempered glass base, use a glass cleaner for streak-free results. Avoid placing heavy or sharp objects directly on the glass to prevent scratches or damage.

## 7. TROUBLESHOOTING

If you encounter any issues with your TV stand, refer to the following common problems and solutions:

Problem	Possible Cause	Solution
TV is not level	Uneven floor; mounting bracket not level.	Adjust the leveling feet on the base; re-check mounting bracket alignment.
Stand feels wobbly	Loose connections; stand not on a flat surface.	Ensure all screws are tightened; move stand to a flat, stable surface.
TV does not fit the mount	Incorrect VESA pattern or TV size.	Verify your TV's VESA pattern and size against the stand's specifications (27-65 inch, VESA 100x100mm to 400x400mm).

## 8. SPECIFICATIONS

Feature	Detail
Model Number	AX1006TB
Compatible TV Sizes	27 to 65 inches
Maximum Weight Capacity	77 lbs (35 kg)
VESA Compatibility	100x100mm to 400x400mm

Feature	Detail
Swivel Angle	±35 degrees (70 degrees total)
Height Adjustment	9 levels (Min 47.5" to Max 59.3")
Base Material	10mm Tempered Glass
Pillar Material	Steel
Color	Black
Item Weight	19.26 pounds
Package Dimensions	28.1 x 16.7 x 2.8 inches



Image: Detailed diagram illustrating VESA compatibility (100-400mm) and overall dimensions of the TV stand.

## 9. WARRANTY AND SUPPORT

AX WABER products are manufactured with high-quality materials and craftsmanship. For warranty information or technical support, please refer to the contact details provided on your purchase receipt or visit the official AX WABER website.

For additional assistance, you may also refer to the official User Manual PDF available at:

<https://manuals.plus/m/85af9bf6213eb52a60f0cb6a336bb8514ad3a4afcb0049bb83ac338eec5e0078>