

EVERCROSS EV65M

EVERCROSS EV65M Electric Dirt Bike User Manual

Model: EV65M | Brand: EVERCROSS

1. INTRODUCTION

Welcome to the user manual for your new EVERCROSS EV65M Electric Dirt Bike. This 800W electric motorcycle is designed for teenagers, offering an exciting off-road experience with a top speed of 19 MPH and a long-range capability of 12.4 miles. Please read this manual thoroughly before assembly and operation to ensure safe and optimal performance of your electric dirt bike.

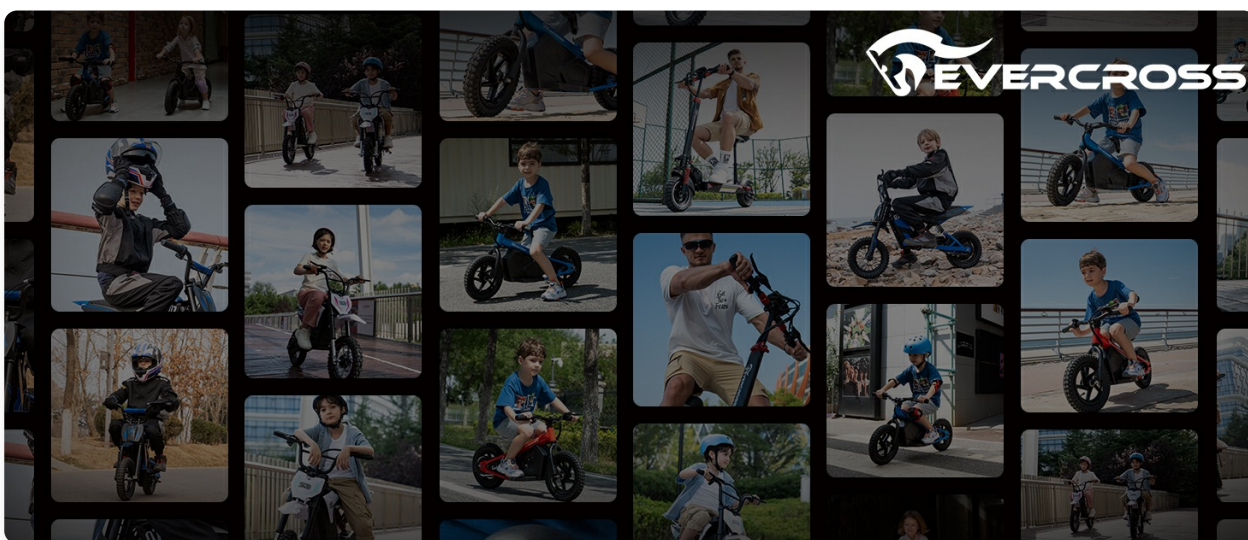


Image: The EVERCROSS EV65M Electric Dirt Bike being ridden by teenagers in an outdoor setting, showcasing its design and intended use.

2. SAFETY INSTRUCTIONS

Your safety is paramount. Always wear appropriate safety gear, including a helmet, knee pads, and elbow pads, when operating the EV65M Electric Dirt Bike. This electric off-road vehicle features rear-mounted high-performance suspension and alloy bodywork.

Important: It is recommended that the vehicle be installed by two adults. Please ensure the vehicle is installed correctly and all components are securely fastened before riding. Always operate the dirt bike in a safe environment, away from traffic and pedestrians.



Image: Two teenagers on EVERCROSS EV65M Electric Dirt Bikes, wearing helmets, emphasizing the importance of safety during operation.

3. SETUP AND ASSEMBLY

The EVERCROSS EV65M Electric Dirt Bike requires some assembly upon arrival. For a smooth and safe setup, it is recommended that **two adults** perform the assembly.

Assembly Steps:

1. Unpack all components and verify against the packing list.
2. Attach the handlebars securely. Ensure all bolts are tightened to the specified torque.
3. Install the front fender and any other remaining bodywork.
4. Check tire pressure and inflate to recommended levels if necessary.
5. Perform a thorough safety check of all connections, brakes, and moving parts before the first ride.

Refer to the detailed assembly diagrams included in your product packaging for visual guidance.

4. OPERATING INSTRUCTIONS

Battery and Charging:

The EV65M is equipped with a **36V 7.8Ah battery**. A full charge typically takes 5-6 hours and allows for continuous riding for approximately 12.4 miles. Always use the provided charger and ensure the charging port is clean and dry before connecting.

BATTERY 7.8AH

36V 7.8Ah battery, 5-6 hours on a single charge, can be ridden continuously for 12.4 miles, cultivating bravery and curiosity. Three speed modes: 6.2 mph 12.4 mph 19 mph. (This figure is based on riding at an average speed of 19 mph (30 km/h) on flat pavement with a load of 88.2 lb (40 kg)).

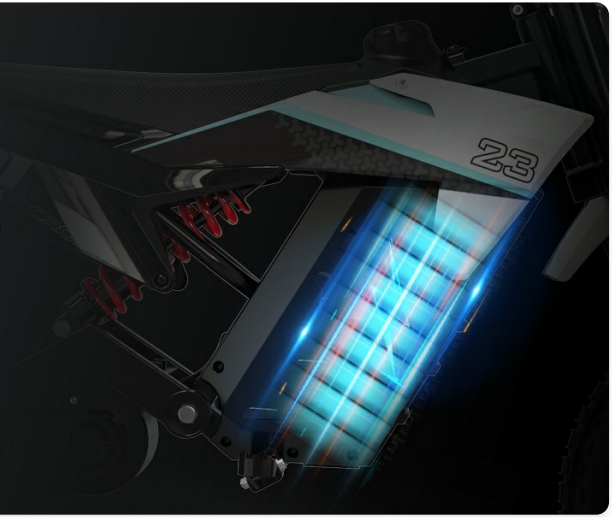


Image: An internal view diagram highlighting the 36V 7.8Ah battery pack, illustrating its placement within the dirt bike's frame.

Speed Modes:

The EV65M features three adjustable speed modes to suit different skill levels and riding conditions:

- **Mode 1:** 6.2 MPH (10 km/h) - Ideal for beginners or confined spaces.
- **Mode 2:** 12.4 MPH (20 km/h) - Balanced speed for intermediate riders.
- **Mode 3:** 19 MPH (30 km/h) - Maximum speed for experienced riders on open terrain.

The speed mode can be selected via a switch on the control panel.

Motor and Power:

Powering the EV65M is a robust **800W motor**, providing ample power for off-road adventures and maintaining performance across varied terrains.



Image: A detailed diagram showcasing the internal components of the EV65M's surging power system, highlighting the 800W motor and its connection to the wheel.

5. FEATURES

- **Powerful Motor:** 800W electric motor for strong acceleration and performance.
- **Long Range Battery:** 36V 7.8Ah battery provides up to 12.4 miles of riding on a single charge.

- **Adjustable Speed:** Three speed modes (6.2 MPH, 12.4 MPH, 19 MPH) for varied riding experiences.
- **Durable Construction:** Features rear-mounted high-performance suspension and alloy bodywork.
- **Dual Disc Brakes:** Equipped with dual disc brakes for reliable stopping power.
- **High Load Capacity:** Supports a maximum load of 90 kg (198 lbs).

Available Colors:



Pink Model



Blue Model

Image: The EVERCROSS EV65M Electric Dirt Bike is available in two distinct color options: pink and blue.

6. MAINTENANCE

Regular maintenance ensures the longevity and safe operation of your EV65M Electric Dirt Bike.

- **Cleaning:** Wipe down the bike with a damp cloth after each use. Avoid using high-pressure water jets directly on electrical components.
- **Tires:** Regularly check tire pressure and inflate to the recommended PSI (refer to tire sidewall for details). Inspect tires for wear and tear.
- **Brakes:** Periodically check the functionality of the dual disc brakes. Ensure they respond promptly and effectively. Adjust or replace brake pads as needed.
- **Battery Care:** Store the bike in a cool, dry place. If storing for extended periods, charge the battery to approximately 50-70% and recharge every 2-3 months to prevent deep discharge.
- **Fasteners:** Check all bolts, nuts, and fasteners regularly to ensure they are tight and secure.

7. TROUBLESHOOTING

This section provides solutions to common issues you might encounter with your EV65M Electric Dirt Bike.

Problem	Possible Cause	Solution
Bike does not power on.	Battery is low or depleted; Power switch is off; Loose battery connection.	Charge the battery; Ensure power switch is in the "ON" position; Check battery connections.
Reduced range or power.	Battery not fully charged; Old battery; Riding conditions (e.g., uphill, heavy load).	Ensure full charge; Consider battery replacement if old; Adjust riding style or terrain.
Brakes feel weak.	Brake pads worn; Brake cable loose.	Inspect and replace brake pads; Adjust brake cable tension.
Unusual noises during operation.	Loose components; Debris in moving parts.	Inspect all parts for looseness and tighten; Clean any debris from wheels or motor area.

If you encounter issues not listed here or if the suggested solutions do not resolve the problem, please contact EVERCROSS customer support.

8. SPECIFICATIONS

Attribute	Detail
Model Number	EV65M
Motor Power	800W
Battery	36V 7.8Ah
Max Speed	19 MPH (30 km/h)
Max Range	12.4 Miles (20 km)
Product Dimensions	51.77 x 11.22 x 31.29 inches
Net Weight	33.5 KG (73.85 lbs)
Max Load	90 kg (198 lbs)
Tire Type	Pneumatic Tire: 14" x 2.75
Brakes	Dual disc brakes
Max Slope	10°
Manufacturer	ZHEJIANG KUANTU INDUSTRY AND TRADE CO,LTD

EVERCROSS EV65M

Brakes: Dual disc brakes
Net weight: 33.5KG (73.85 lbs)
Max load: 90 kg (198 lbs)
Pneumatic Tire: 14"*2.75
Max. Slope: 10°



Image: A technical diagram illustrating the key dimensions of the EVERCROSS EV65M Electric Dirt Bike, including length and height.

9. WARRANTY AND SUPPORT

Specific warranty information for the EVERCROSS EV65M Electric Dirt Bike is typically provided with the product packaging or on the manufacturer's official website. Please refer to these sources for detailed terms and conditions regarding your product's warranty.

For technical support, spare parts, or any inquiries regarding your EVERCROSS product, please contact the manufacturer directly. Contact details can usually be found on the product packaging, in the included documentation, or on the EVERCROSS brand website.

Manufacturer: ZHEJIANG KUANTU INDUSTRY AND TRADE CO,LTD

© 2023 EVERCROSS. All rights reserved.

This manual is for informational purposes only. Specifications are subject to change without notice.