

## Real HD 24 port 2.5G ethernet switch without PoE

# Real HD 24 Port 2.5G Web Managed Ethernet Network Switch User Manual

Model: 24 port 2.5G ethernet switch without PoE

## 1. INTRODUCTION

This manual provides detailed instructions for the installation, operation, and maintenance of your Real HD 24 Port 2.5G Web Managed Ethernet Network Switch. This device is designed to provide high-speed network connectivity with advanced management features for various environments.

The switch features 24 x 2.5G RJ45 ports and 2 x 10G SFP+ ports, offering a total switching capacity of 160Gbps. Its fanless design ensures quiet operation and efficient heat dissipation, suitable for temperatures from -20 to 50°C.



Figure 1: Front view of the Real HD 24 Port 2.5G Web Managed Ethernet Network Switch.

## 2. SETUP AND INSTALLATION

---

### 2.1 Package Contents

Verify that your package contains the following items:

- Real HD 24 Port 2.5G Web Managed Ethernet Network Switch
- Power Adapter
- Rack Mount Brackets (2)
- Screws for Rack Mount
- User Manual (this document)

### 2.2 Physical Installation

The switch supports both desktop placement and 1U rack mounting.

#### 2.2.1 Desktop Placement

Place the switch on a flat, stable surface. Ensure adequate ventilation around the device to prevent overheating.

#### 2.2.2 Rack Mounting

To install the switch in a standard 19-inch equipment rack:

1. Attach the two rack mount brackets to the sides of the switch using the provided screws.
2. Secure the switch into the rack using appropriate rack screws (not included).

# Multiple Application Scenarios for 2.5G Network



Small and Home Offices



Home Entertainment



Instant Transfer for Workstation



Online Game

Figure 2: Rack mounting the switch.

## 2.3 Connecting to Power

Connect the provided power adapter to the DC input port on the switch and then plug the adapter into a standard AC power outlet. The Power LED indicator will illuminate when the switch receives power.

## 2.4 Network Connections

Connect your network devices (computers, servers, routers, access points, NAS devices) to the RJ45 ports using Ethernet cables. For optimal 2.5G performance, use Cat6, Cat6a, or Cat7 Ethernet cables. The switch is backward compatible with 10/100/1000Mbps devices.

The two 10G SFP+ ports can be used for high-speed uplinks to other switches or servers, requiring compatible SFP+ modules and fiber optic cables (not included).

# 2.5x Faster Than Regular Gigabit Network Total Switching Capacity 160Gbps



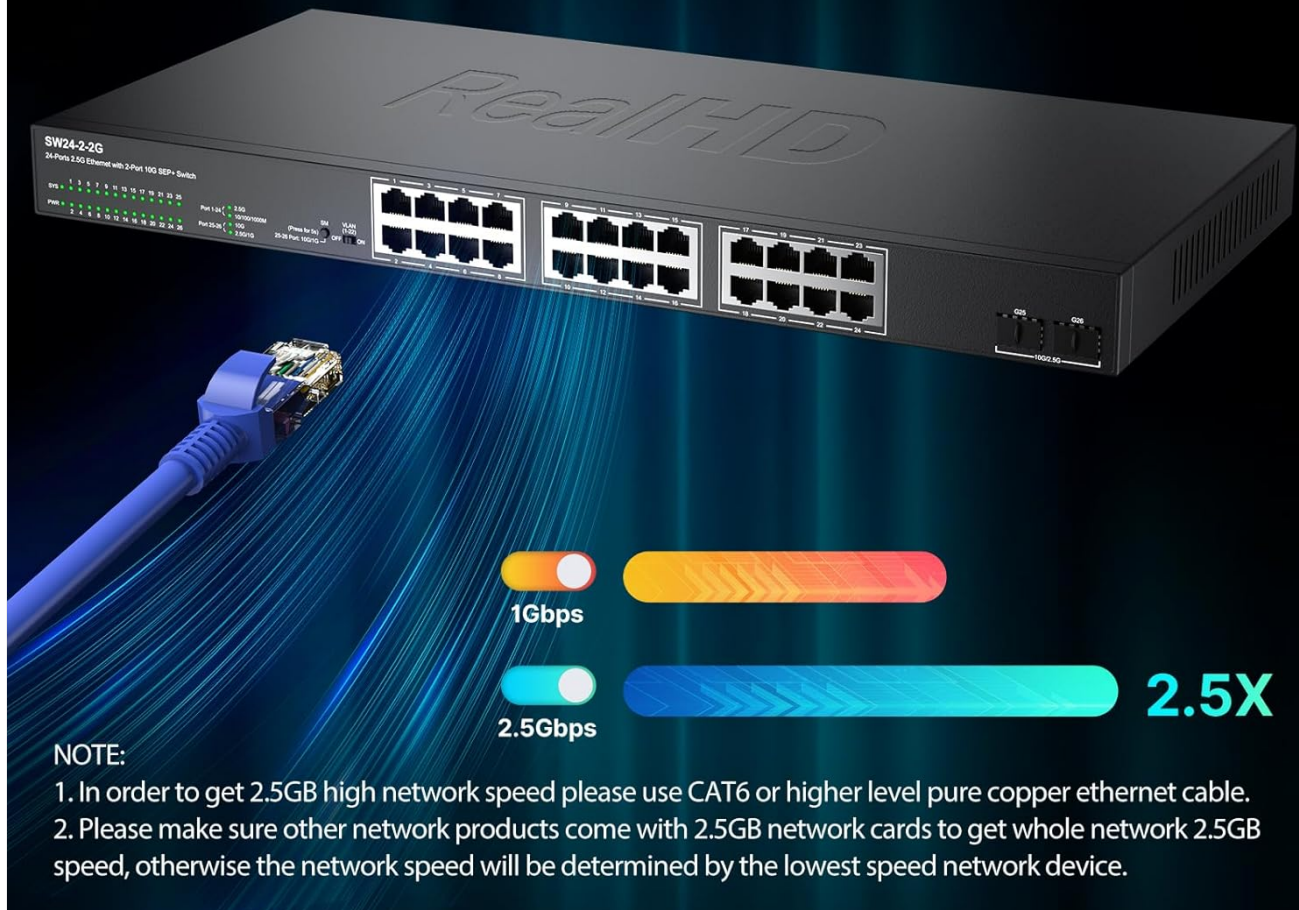
CAT6 Cable



CAT6a Cable



CAT7 Cable



## NOTE:

1. In order to get 2.5GB high network speed please use CAT6 or higher level pure copper ethernet cable.
2. Please make sure other network products come with 2.5GB network cards to get whole network 2.5GB speed, otherwise the network speed will be determined by the lowest speed network device.

Figure 3: Connecting devices to the switch for 2.5G network speeds.

## 3. OPERATING THE SWITCH

### 3.1 LED Indicators

The front panel of the switch features LED indicators that provide status information:

- **SYS LED:** Indicates system status.
- **PWR LED:** Indicates power status.
- **Port Link/Act LEDs:** Indicate link status and activity for each RJ45 port. Green for 2.5G link/activity, Amber for 10/100/1000Mbps link/activity.
- **SFP+ Link/Act LEDs:** Indicate link status and activity for SFP+ ports.

### 3.2 Web Management Interface

This switch is web-managed, allowing configuration and monitoring through a web browser. To access the



management interface:

1. Ensure your computer is connected to the switch via an Ethernet cable.
2. Open a web browser (e.g., Chrome, Firefox, Edge).
3. Enter the default IP address of the switch (refer to the product label or quick start guide for the default IP).
4. Enter the default username and password when prompted.

Once logged in, you can configure various network settings, including:

- **VLANs:** For network segmentation and traffic isolation.
- **QoS (Quality of Service):** To prioritize network traffic for applications like VoIP and video streaming.
- **Security:** MAC address table management and port security.
- **Multicast:** IGMP snooping for efficient video stream delivery.
- **Diagnosis:** Tools for network troubleshooting.

## Switch Software for Local Configuration & Control

Users can configure, monitor and troubleshoot the device without having CLI expertise



**SW24-2-2G**  
24-Ports 2.5G Ethernet with 2-Port 10G SFP+ Switch

**VLANs** - network segmentation controls

**QoS** - optimizes VoIP & network video performance

**IGMP & Multicast** - video streams & multicast traffic

**Port Security** - MAC Address Constraints

**Priority Settings per Port** - rate limiting, and VLANs

**Spanning Tree Protocol** - with failover links & interoperability

**Not support L2 and L3 Software Features**

Figure 4: Overview of web management interface features.

## 4. MAINTENANCE

The Real HD 24 Port 2.5G Web Managed Ethernet Network Switch is designed for low maintenance. Its fanless metal housing contributes to quiet operation and efficient heat dissipation, allowing it to function reliably in a wide temperature range.

- **Cleaning:** Periodically clean the exterior of the switch with a soft, dry cloth. Do not use liquid or aerosol cleaners.
- **Ventilation:** Ensure that the ventilation openings on the sides of the switch are not obstructed to maintain proper airflow.
- **Firmware Updates:** Check the manufacturer's website periodically for firmware updates to ensure optimal performance and security.

## 5. TROUBLESHOOTING

If you encounter issues with your switch, refer to the following common troubleshooting steps:

- **No Power:** Verify that the power adapter is securely connected to both the switch and a working power outlet. Check the PWR LED.
- **No Link/Connectivity:**
  - Ensure Ethernet cables are securely connected to both the switch port and the network device.
  - Check the Link/Act LED for the specific port. If it's off, try a different cable or port.
  - Verify that the connected device is powered on and functioning correctly.
- **Slow Network Speed:**
  - Ensure you are using Cat6, Cat6a, or Cat7 Ethernet cables for 2.5G connections.
  - Confirm that all connected devices (network cards, routers, NAS) support 2.5G Ethernet for optimal performance. The network speed will be determined by the slowest device in the chain.
  - Check for excessive network traffic or bottlenecks on other devices.
- **Cannot Access Web Management:**
  - Verify your computer's IP address is in the same subnet as the switch's default IP address.
  - Ensure there are no IP address conflicts on your network.
  - Try clearing your browser's cache or using a different browser.
  - If the default IP address has been changed and forgotten, a factory reset may be necessary (refer to the quick start guide for reset procedures).

## 6. SPECIFICATIONS

Feature	Specification
Model Number	24 port 2.5G ethernet switch without PoE
Brand	Real HD
Number of Ports	24 x 2.5G RJ45, 2 x 10G SFP+
Data Transfer Rate	2500 Megabits Per Second (2.5G)
Switching Capacity	160 Gbps

Interface Type	RJ45, SFP+
Case Material	Metal
Fanless Design	Yes
Operating Temperature	-20 to 50°C
Product Dimensions	17.3 x 8 x 1.8 inches (43.9 x 20.3 x 4.6 cm)
Item Weight	7.09 pounds (3.22 Kilograms)
Compatible Devices	Laptop, Router, WiFi 6 AP, Gaming PC, NAS




Figure 5: Product dimensions and port layout.

## 7. WARRANTY AND SUPPORT

For warranty information and technical support, please contact the Real HD Store directly through your purchase

platform or their official website. Keep your purchase receipt as proof of purchase for warranty claims.

## Related Documents - 24 port 2.5G ethernet switch without PoE

 <p><b>MokerLink</b></p> <p>2.5G SFP+ 10G SFP+</p> <p>5-Port 2.5G and 1-Port 10G SFP+ Web Managed Switch</p> <p><b>Key Features:</b></p> <ul style="list-style-type: none"> <li>• 5 x 2.5G SFP+ ports and 1 x 10G SFP+ port</li> <li>• Supports IEEE 802.3ab &amp; 802.3ae, 10/100/1000 Mbps, 10Gbps</li> <li>• Supports Link Aggregation (LACP) and VLAN</li> <li>• Supports Port Mirroring, QoS, and SNMP</li> <li>• PoE/PoE+ support up to 100W</li> <li>• Supports Web Management, CLI, and Telnet</li> <li>• Supports Remote Management via SSH/SFTP</li> <li>• Supports Multiple Users and Roles</li> <li>• Supports Multiple Languages</li> <li>• Supports Multiple Time Zones</li> <li>• Supports Multiple NTP Servers</li> <li>• Supports Multiple DNS Servers</li> <li>• Supports Multiple DHCP Servers</li> <li>• Supports Multiple ARP Entries</li> <li>• Supports Multiple MAC Addresses</li> <li>• Supports Multiple IP Addresses</li> <li>• Supports Multiple Subnets</li> <li>• Supports Multiple Routers</li> <li>• Supports Multiple Gateways</li> <li>• Supports Multiple Networks</li> <li>• Supports Multiple Devices</li> <li>• Supports Multiple Applications</li> <li>• Supports Multiple Services</li> <li>• Supports Multiple Protocols</li> <li>• Supports Multiple Standards</li> <li>• Supports Multiple Specifications</li> <li>• Supports Multiple Certifications</li> <li>• Supports Multiple Awards</li> <li>• Supports Multiple Honors</li> <li>• Supports Multiple Medals</li> <li>• Supports Multiple Trophies</li> <li>• Supports Multiple Diplomas</li> <li>• Supports Multiple Certificates</li> <li>• Supports Multiple Licenses</li> <li>• Supports Multiple Patents</li> <li>• Supports Multiple Trademarks</li> <li>• Supports Multiple Copyrights</li> <li>• Supports Multiple Rights</li> <li>• Supports Multiple Interests</li> <li>• Supports Multiple Powers</li> <li>• Supports Multiple Abilities</li> <li>• Supports Multiple Skills</li> <li>• Supports Multiple Talents</li> <li>• Supports Multiple Capacities</li> <li>• Supports Multiple Strengths</li> <li>• Supports Multiple Weaknesses</li> <li>• Supports Multiple Vulnerabilities</li> <li>• Supports Multiple Threats</li> <li>• Supports Multiple Risks</li> <li>• Supports Multiple Opportunities</li> <li>• Supports Multiple Challenges</li> <li>• Supports Multiple Obstacles</li> <li>• Supports Multiple Barriers</li> <li>• Supports Multiple Walls</li> <li>• Supports Multiple Fences</li> <li>• Supports Multiple Gates</li> <li>• Supports Multiple Doors</li> <li>• Supports Multiple Windows</li> <li>• Supports Multiple Roofs</li> <li>• Supports Multiple Floors</li> <li>• Supports Multiple Rooms</li> <li>• Supports Multiple Buildings</li> <li>• Supports Multiple Cities</li> <li>• Supports Multiple Countries</li> <li>• Supports Multiple Continents</li> <li>• Supports Multiple Worlds</li> <li>• Supports Multiple Universes</li> <li>• Supports Multiple Multiverses</li> <li>• Supports Multiple Omniverses</li> <li>• Supports Multiple Pantheons</li> <li>• Supports Multiple Cosmoi</li> <li>• Supports Multiple Kosmoi</li> <li>• Supports Multiple Megakosmoi</li> <li>• Supports Multiple Hyperkosmoi</li> <li>• Supports Multiple Superkosmoi</li> <li>• Supports Multiple All-Kosmoi</li> <li>• Supports Multiple Meta-Kosmoi</li> <li>• Supports Multiple Ultra-Kosmoi</li> <li>• Supports Multiple Mega-Kosmoi</li> <li>• Supports Multiple Giga-Kosmoi</li> <li>• Supports Multiple Tera-Kosmoi</li> <li>• Supports Multiple Peta-Kosmoi</li> <li>• Supports Multiple Exa-Kosmoi</li> <li>• Supports Multiple Zetta-Kosmoi</li> <li>• Supports Multiple Yotta-Kosmoi</li> <li>• Supports Multiple Bronto-Kosmoi</li> <li>• Supports Multiple Geoplos-Kosmoi</li> <li>• Supports Multiple Tero-Kosmoi</li> <li>• Supports Multiple Piko-Kosmoi</li> <li>• Supports Multiple Nano-Kosmoi</li> <li>• Supports Multiple Femto-Kosmoi</li> <li>• Supports Multiple Atto-Kosmoi</li> <li>• Supports Multipleatto-Kosmoi</li> <li>• Supports Multiple Zepto-Kosmoi</li> <li>• Supports Multiple Yocto-Kosmoi</li> <li>• Supports Multiple Planck-Kosmoi</li> <li>• Supports Multiple Schrödinger-Kosmoi</li> <li>• Supports Multiple Heisenberg-Kosmoi</li> <li>• Supports Multiple Einstein-Kosmoi</li> <li>• Supports Multiple Bohr-Kosmoi</li> <li>• Supports Multiple de Broglie-Kosmoi</li> <li>• Supports Multiple Compton-Kosmoi</li> <li>• Supports Multiple Rydberg-Kosmoi</li> <li>• Supports Multiple Balmer-Kosmoi</li> <li>• Supports Multiple Lyman-Kosmoi</li> <li>• Supports Multiple Paschen-Kosmoi</li> <li>• Supports Multiple Brackett-Kosmoi</li> <li>• Supports Multiple Pfund-Kosmoi</li> <li>• Supports Multiple Humphreys-Kosmoi</li> <li>• Supports Multiple H&amp;N-Kosmoi</li> <li>• Supports Multiple W&amp;R-Kosmoi</li> <li>• Supports Multiple F&amp;D-Kosmoi</li> <li>• Supports Multiple J&amp;K-Kosmoi</li> <li>• Supports Multiple L&amp;P-Kosmoi</li> <li>• Supports Multiple B&amp;V-Kosmoi</li> <li>• Supports Multiple G&amp;S-Kosmoi</li> <li>• Supports Multiple M&amp;J-Kosmoi</li> <li>• Supports Multiple C&amp;O-Kosmoi</li> <li>• Supports Multiple E&amp;B-Kosmoi</li> <li>• Supports Multiple F&amp;C-Kosmoi</li> <li>• Supports Multiple D&amp;H-Kosmoi</li> <li>• Supports Multiple K&amp;I-Kosmoi</li> <li>• Supports Multiple N&amp;T-Kosmoi</li> <li>• Supports Multiple A&amp;U-Kosmoi</li> <li>• Supports Multiple V&amp;W-Kosmoi</li> <li>• Supports Multiple X&amp;Y-Kosmoi</li> <li>• Supports Multiple Z&amp;Q-Kosmoi</li> <li>• Supports Multiple AA-Kosmoi</li> <li>• Supports Multiple AB-Kosmoi</li> <li>• Supports Multiple AC-Kosmoi</li> <li>• Supports Multiple AD-Kosmoi</li> <li>• Supports Multiple AE-Kosmoi</li> <li>• Supports Multiple AF-Kosmoi</li> <li>• Supports Multiple AG-Kosmoi</li> <li>• Supports Multiple AH-Kosmoi</li> <li>• Supports Multiple AI-Kosmoi</li> <li>• Supports Multiple AJ-Kosmoi</li> <li>• Supports Multiple AK-Kosmoi</li> <li>• Supports Multiple AL-Kosmoi</li> <li>• Supports Multiple AM-Kosmoi</li> <li>• Supports Multiple AN-Kosmoi</li> <li>• Supports Multiple AO-Kosmoi</li> <li>• Supports Multiple AP-Kosmoi</li> <li>• Supports Multiple AQ-Kosmoi</li> <li>• Supports Multiple AR-Kosmoi</li> <li>• Supports Multiple AS-Kosmoi</li> <li>• Supports Multiple AT-Kosmoi</li> <li>• Supports Multiple AU-Kosmoi</li> <li>• Supports Multiple AV-Kosmoi</li> <li>• Supports Multiple AW-Kosmoi</li> <li>• Supports Multiple AX-Kosmoi</li> <li>• Supports Multiple AY-Kosmoi</li> <li>• Supports Multiple AZ-Kosmoi</li> <li>• Supports Multiple BA-Kosmoi</li> <li>• Supports Multiple BB-Kosmoi</li> <li>• Supports Multiple BC-Kosmoi</li> <li>• Supports Multiple BD-Kosmoi</li> <li>• Supports Multiple BE-Kosmoi</li> <li>• Supports Multiple BF-Kosmoi</li> <li>• Supports Multiple BG-Kosmoi</li> <li>• Supports Multiple BH-Kosmoi</li> <li>• Supports Multiple BI-Kosmoi</li> <li>• Supports Multiple BJ-Kosmoi</li> <li>• Supports Multiple BK-Kosmoi</li> <li>• Supports Multiple BL-Kosmoi</li> <li>• Supports Multiple BM-Kosmoi</li> <li>• Supports Multiple BN-Kosmoi</li> <li>• Supports Multiple BO-Kosmoi</li> <li>• Supports Multiple BP-Kosmoi</li> <li>• Supports Multiple BQ-Kosmoi</li> <li>• Supports Multiple BR-Kosmoi</li> <li>• Supports Multiple BS-Kosmoi</li> <li>• Supports Multiple BT-Kosmoi</li> <li>• Supports Multiple BU-Kosmoi</li> <li>• Supports Multiple BV-Kosmoi</li> <li>• Supports Multiple BW-Kosmoi</li> <li>• Supports Multiple BX-Kosmoi</li> <li>• Supports Multiple BY-Kosmoi</li> <li>• Supports Multiple BZ-Kosmoi</li> <li>• Supports Multiple CA-Kosmoi</li> <li>• Supports Multiple CB-Kosmoi</li> <li>• Supports Multiple CC-Kosmoi</li> <li>• Supports Multiple CD-Kosmoi</li> <li>• Supports Multiple CE-Kosmoi</li> <li>• Supports Multiple CF-Kosmoi</li> <li>• Supports Multiple CG-Kosmoi</li> <li>• Supports Multiple CH-Kosmoi</li> <li>• Supports Multiple CI-Kosmoi</li> <li>• Supports Multiple CJ-Kosmoi</li> <li>• Supports Multiple CK-Kosmoi</li> <li>• Supports Multiple CL-Kosmoi</li> <li>• Supports Multiple CM-Kosmoi</li> <li>• Supports Multiple CN-Kosmoi</li> <li>• Supports Multiple CO-Kosmoi</li> <li>• Supports Multiple CP-Kosmoi</li> <li>• Supports Multiple CQ-Kosmoi</li> <li>• Supports Multiple CR-Kosmoi</li> <li>• Supports Multiple CS-Kosmoi</li> <li>• Supports Multiple CT-Kosmoi</li> <li>• Supports Multiple CU-Kosmoi</li> <li>• Supports Multiple CV-Kosmoi</li> <li>• Supports Multiple CW-Kosmoi</li> <li>• Supports Multiple CX-Kosmoi</li> <li>• Supports Multiple CY-Kosmoi</li> <li>• Supports Multiple CZ-Kosmoi</li> <li>• Supports Multiple DA-Kosmoi</li> <li>• Supports Multiple DB-Kosmoi</li> <li>• Supports Multiple DC-Kosmoi</li> <li>• Supports Multiple DE-Kosmoi</li> <li>• Supports Multiple DF-Kosmoi</li> <li>• Supports Multiple DG-Kosmoi</li> <li>• Supports Multiple DH-Kosmoi</li> <li>• Supports Multiple DI-Kosmoi</li> <li>• Supports Multiple DJ-Kosmoi</li> <li>• Supports Multiple DK-Kosmoi</li> <li>• Supports Multiple DL-Kosmoi</li> <li>• Supports Multiple DM-Kosmoi</li> <li>• Supports Multiple DN-Kosmoi</li> <li>• Supports Multiple DO-Kosmoi</li> <li>• Supports Multiple DP-Kosmoi</li> <li>• Supports Multiple DQ-Kosmoi</li> <li>• Supports Multiple DR-Kosmoi</li> <li>• Supports Multiple DS-Kosmoi</li> <li>• Supports Multiple DT-Kosmoi</li> <li>• Supports Multiple DU-Kosmoi</li> <li>• Supports Multiple DV-Kosmoi</li> <li>• Supports Multiple DW-Kosmoi</li> <li>• Supports Multiple DX-Kosmoi</li> <li>• Supports Multiple DY-Kosmoi</li> <li>• Supports Multiple DZ-Kosmoi</li> <li>• Supports Multiple EA-Kosmoi</li> <li>• Supports Multiple EB-Kosmoi</li> <li>• Supports Multiple EC-Kosmoi</li> <li>• Supports Multiple ED-Kosmoi</li> <li>• Supports Multiple EE-Kosmoi</li> <li>• Supports Multiple EF-Kosmoi</li> <li>• Supports Multiple EG-Kosmoi</li> <li>• Supports Multiple EH-Kosmoi</li> <li>• Supports Multiple EI-Kosmoi</li> <li>• Supports Multiple EJ-Kosmoi</li> <li>• Supports Multiple EK-Kosmoi</li> <li>• Supports Multiple EL-Kosmoi</li> <li>• Supports Multiple EM-Kosmoi</li> <li>• Supports Multiple EN-Kosmoi</li> <li>• Supports Multiple EO-Kosmoi</li> <li>• Supports Multiple EP-Kosmoi</li> <li>• Supports Multiple EQ-Kosmoi</li> <li>• Supports Multiple ER-Kosmoi</li> <li>• Supports Multiple ES-Kosmoi</li> <li>• Supports Multiple ET-Kosmoi</li> <li>• Supports Multiple EU-Kosmoi</li> <li>• Supports Multiple EV-Kosmoi</li> <li>• Supports Multiple EW-Kosmoi</li> <li>• Supports Multiple EX-Kosmoi</li> <li>• Supports Multiple EY-Kosmoi</li> <li>• Supports Multiple EZ-Kosmoi</li> <li>• Supports Multiple FA-Kosmoi</li> <li>• Supports Multiple FB-Kosmoi</li> <li>• Supports Multiple FC-Kosmoi</li> <li>• Supports Multiple FD-Kosmoi</li> <li>• Supports Multiple FE-Kosmoi</li> <li>• Supports Multiple FF-Kosmoi</li> <li>• Supports Multiple FG-Kosmoi</li> <li>• Supports Multiple FH-Kosmoi</li> <li>• Supports Multiple FI-Kosmoi</li> <li>• Supports Multiple FJ-Kosmoi</li> <li>• Supports Multiple FK-Kosmoi</li> <li>• Supports Multiple FL-Kosmoi</li> <li>• Supports Multiple FM-Kosmoi</li> <li>• Supports Multiple FN-Kosmoi</li> <li>• Supports Multiple FO-Kosmoi</li> <li>• Supports Multiple FP-Kosmoi</li> <li>• Supports Multiple FQ-Kosmoi</li> <li>• Supports Multiple FR-Kosmoi</li> <li>• Supports Multiple FS-Kosmoi</li> <li>• Supports Multiple FT-Kosmoi</li> <li>• Supports Multiple FU-Kosmoi</li> <li>• Supports Multiple FV-Kosmoi</li> <li>• Supports Multiple FW-Kosmoi</li> <li>• Supports Multiple FX-Kosmoi</li> <li>• Supports Multiple FY-Kosmoi</li> <li>• Supports Multiple FZ-Kosmoi</li> <li>• Supports Multiple GA-Kosmoi</li> <li>• Supports Multiple GB-Kosmoi</li> <li>• Supports Multiple GC-Kosmoi</li> <li>• Supports Multiple GD-Kosmoi</li> <li>• Supports Multiple GE-Kosmoi</li> <li>• Supports Multiple GF-Kosmoi</li> <li>• Supports Multiple GG-Kosmoi</li> <li>• Supports Multiple GH-Kosmoi</li> <li>• Supports Multiple GI-Kosmoi</li> <li>• Supports Multiple GJ-Kosmoi</li> <li>• Supports Multiple GK-Kosmoi</li> <li>• Supports Multiple GL-Kosmoi</li> <li>• Supports Multiple GM-Kosmoi</li> <li>• Supports Multiple GN-Kosmoi</li> <li>• Supports Multiple GO-Kosmoi</li> <li>• Supports Multiple GP-Kosmoi</li> <li>• Supports Multiple GQ-Kosmoi</li> <li>• Supports Multiple GR-Kosmoi</li> <li>• Supports Multiple GS-Kosmoi</li> <li>• Supports Multiple GT-Kosmoi</li> <li>• Supports Multiple GU-Kosmoi&lt;/</li></ul>
--