

Manuals+

[Q & A](#) | [Deep Search](#) | [Upload](#)

manuals.plus /

> [CANDERE](#) /

> [CANDERE BIS Hallmark 18K Yellow Gold Stud Diamond Earring User Manual](#)

CANDERE 18K

CANDERE BIS Hallmark 18K Yellow Gold Stud Diamond Earring User Manual

Model: 18K

1. PRODUCT OVERVIEW

These CANDERE stud earrings are crafted from 18K pure yellow gold and feature 8 SIJ real diamonds, totaling 0.04 carats. Designed for women, they offer a stylish accent for everyday wear. The earrings are secured with a push-back closure and bear the BIS hallmark and HUID, ensuring authenticity and quality.



Image 1.1: Front view of the CANDERE 18K Yellow Gold Stud Diamond Earrings. Each earring features a curved gold design with a row of diamonds embedded.



Image 1.2: A banner showcasing the CANDERE Diamondlites Collection, highlighting the brand's range of diamond jewelry.

2. COMPONENTS AND FEATURES

- **Material:** 18K Pure Yellow Gold
- **Gemstones:** 8 SIJJ Real Diamonds, 0.04 Carats total weight
- **Closure Type:** Push Back
- **Hallmarking:** BIS Hallmark and HUID (where applicable for weight)
- **Dimensions:** Approximately 9mm (height) x 5mm (width)



Image 2.1: A single earring viewed from the side, showing the curved gold structure and embedded diamonds.



Image 2.2: Rear view of a single earring, showing the post and the transparent push-back closure mechanism.



Image 2.3: The pair of earrings with visual indicators for their approximate height (9.00mm) and width (5.00mm).

3. WEARING INSTRUCTIONS

1. Gently hold the earring by the decorative front part.
2. Align the earring post with your ear piercing.
3. Carefully insert the post through the piercing.
4. Take the push-back closure and slide it onto the post from the back of your ear until it is comfortably secure. Ensure it is snug but not too tight to avoid discomfort.
5. To remove, gently pull the push-back closure away from the post and slide the earring out.

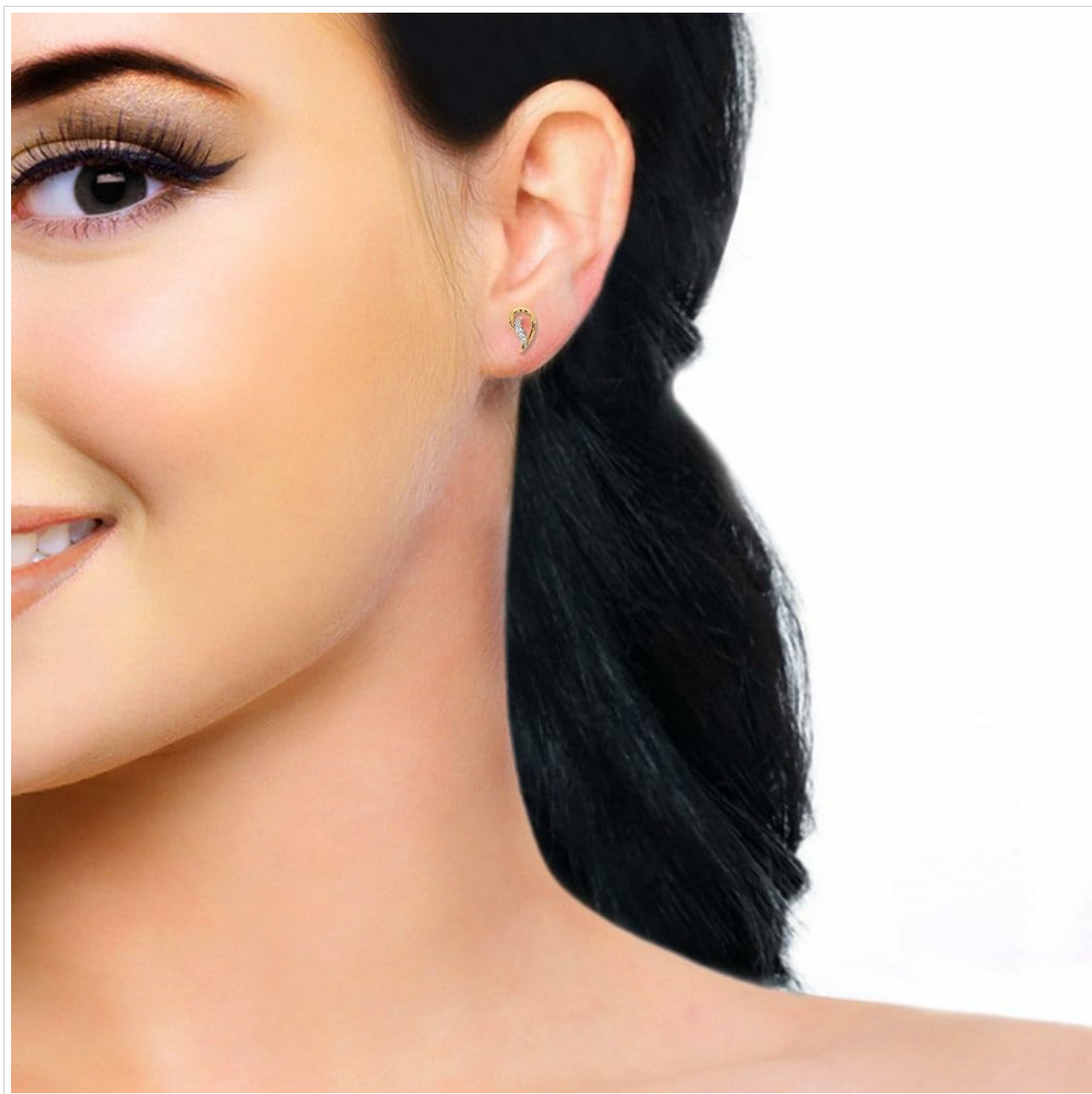


Image 3.1: A close-up of an earring being worn, demonstrating its appearance on the ear.

4. MAINTENANCE AND CARE

Proper care will help maintain the brilliance and longevity of your CANDERE diamond earrings.

- **Cleaning:** Clean your earrings regularly with a soft, lint-free cloth. For a deeper clean, use a mild soap solution and a soft brush, then rinse thoroughly with clean water and dry completely. Avoid harsh chemicals or abrasive materials.
- **Storage:** Store your earrings in a clean, dry place, preferably in a jewelry box or soft pouch to prevent scratches and tangling with other jewelry.
- **Avoid Exposure:** Remove earrings before showering, swimming, exercising, or applying perfumes, lotions, and hairsprays, as these can dull the gold and diamonds.
- **Regular Inspection:** Periodically check the settings of the diamonds and the security of the push-back closure to ensure they are intact.

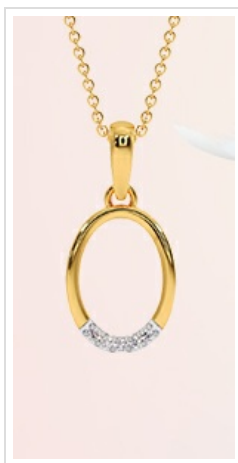


Image 4.1: An icon representing care tips for jewelry, emphasizing the importance of proper maintenance.

5. TROUBLESHOOTING

If you encounter any issues with your earrings, consider the following:

- **Dullness:** If the earrings appear dull, they likely need cleaning. Follow the cleaning instructions in Section 4.
- **Loose Push-Back:** If the push-back feels loose, gently squeeze the loops of the push-back closer together to increase tension. If it remains loose or is damaged, contact customer support for assistance.
- **Discomfort:** Ensure the push-back is not too tight. If irritation occurs, clean the earrings thoroughly and consult a professional if symptoms persist.

6. SPECIFICATIONS

Feature	Detail
Product Dimensions	0.9 x 0.5 x 0.9 cm (9 x 5 x 9 Millimeters)
Material Type	Yellow Gold (18K)
Metal Type	Yellow Gold
Gem Type	SIJ Diamond (8 diamonds, 0.04 Carats total)
Item Model Number	18K
Closure	Push Back
Net Quantity	2.00 Count (1 Pair)
Manufacturer	CANDERE - A KALYAN JEWELLERS COMPANY

7. CERTIFICATION AND AUTHENTICITY

Your CANDERE earrings come with assurances of quality and authenticity:

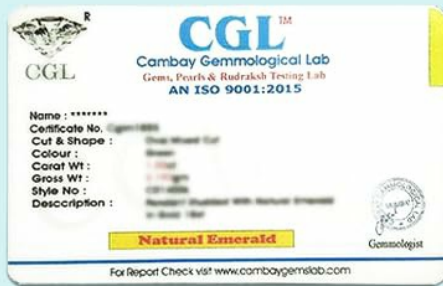
- **BIS Hallmark:** The Bureau of Indian Standards (BIS) hallmark guarantees the purity of the gold.
- **HUID:** A Hallmarking Unique Identification number is inscribed directly on the product, where applicable for items weighing 2 grams or more.
- **Additional Certificates:** Depending on the specific product, certifications from International Gemological Institute (IGI), Cambay Gemmological Lab (CGL), or SGL may be included.



BIS Hallmark



IGI Certificate



CGL Certificate



SGL Certificate

CERTIFICATION OF AUTHENTICITY

Image 7.1: Examples of certification documents that may accompany CANDERE jewelry, including BIS Hallmark, IGI Certificate, CGL Certificate, and SGL Certificate.

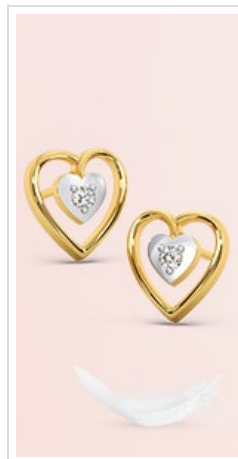


Image 7.2: The official BIS Hallmark logo, indicating certified gold purity.

8. WARRANTY AND SUPPORT

CANDERE offers comprehensive support for your purchase:

- **Buyback and Exchange:** Options are available as per CANDERE's brand policy. Please contact customer support for detailed information.
- **Delivery Inspection:** Your product is delivered in tamper-proof packaging. Please inspect the package for any signs of tampering before accepting delivery. It is recommended to create an unboxing video while opening the parcel for documentation purposes.

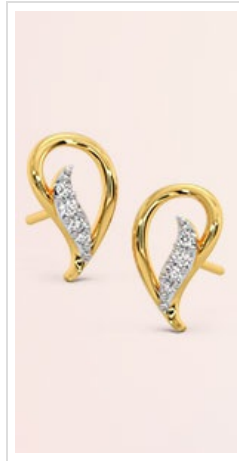


Image 8.1: An icon representing return and exchange policies, highlighting customer service options.

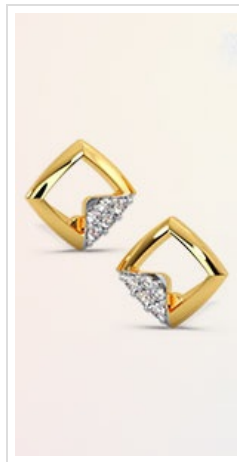


Image 8.2: An image depicting the product packaging, designed to protect the item during transit.