

[Manuals.plus](#) /

> [Elecshion](#) /

> [Dual-Lens] Endoscope Camera with Light, 1920P HD Borescope with 8+1 Adjustable LED Lights, IP67 Waterproof 16.5FT Semi-Rigid Snake Cord Inspection Camera for iPhone, iPad and Android Phone (Type C) 1-interface

Elecshion C-E64

Elecshion Dual-Lens Endoscope Camera User Manual

MODEL: C-E64

1. Introduction

Thank you for choosing the Elecshion Dual-Lens Endoscope Camera. This advanced inspection tool is designed to provide clear, high-definition visuals in hard-to-reach areas. Featuring dual lenses, adjustable LED lighting, and a durable IP67 waterproof semi-rigid cable, it is an essential device for various inspection needs, compatible with iPhone, iPad, and Android devices.

2. What's in the Box

- Endoscope Camera with Light
- Hook attachment (1)
- Mirror attachment (1)
- Magnet attachment (1)
- User Manual (1)



Image: The endoscope camera, user manual, and various attachments including a hook, mirror, and magnet.

3. Setup Guide

Follow these steps to set up your Elecshion Endoscope Camera:

1. **Download the App:** Scan the QR code in the included user manual or search for "UseePlus" in your device's app store (available on both Google Play Store and Apple App Store). Install the application.
2. **Connect the Endoscope:** Plug the endoscope's USB connector into your smartphone or tablet. Ensure your device supports OTG functionality for Android or is compatible with the provided Type-C/Lightning adapter for iOS.
3. **Open the App:** Launch the "UseePlus" app. The app should automatically detect the endoscope and display the live video feed. If not, check your device's connection and app permissions.



Image: Visual guide for downloading the app and connecting the endoscope to your mobile device.

Video: Demonstrates the unboxing, app download, connection process, and initial functionality of the endoscope camera.

4. Operating Instructions

Once connected, you can begin using your endoscope camera:

- **Switching Lenses:** The endoscope features dual lenses. To switch between Lens 1 (70° detection angle) and Lens 2 (45° detection angle), long-press the button on the inline control unit. This allows for versatile viewing in different scenarios.
- **Adjusting LED Lights:** The endoscope is equipped with 8+1 adjustable LED lights. Slide the button on the inline control unit to increase or decrease the brightness of the LED lights, ensuring optimal illumination in dark environments.
- **Capturing Images/Videos:** Use the controls within the "UseePlus" app to capture still images or record video footage of your inspection.
- **Attaching Accessories:** The included hook, magnet, and mirror attachments can be screwed onto the end of the camera probe to assist with retrieving objects, viewing at angles, or navigating tight spaces.

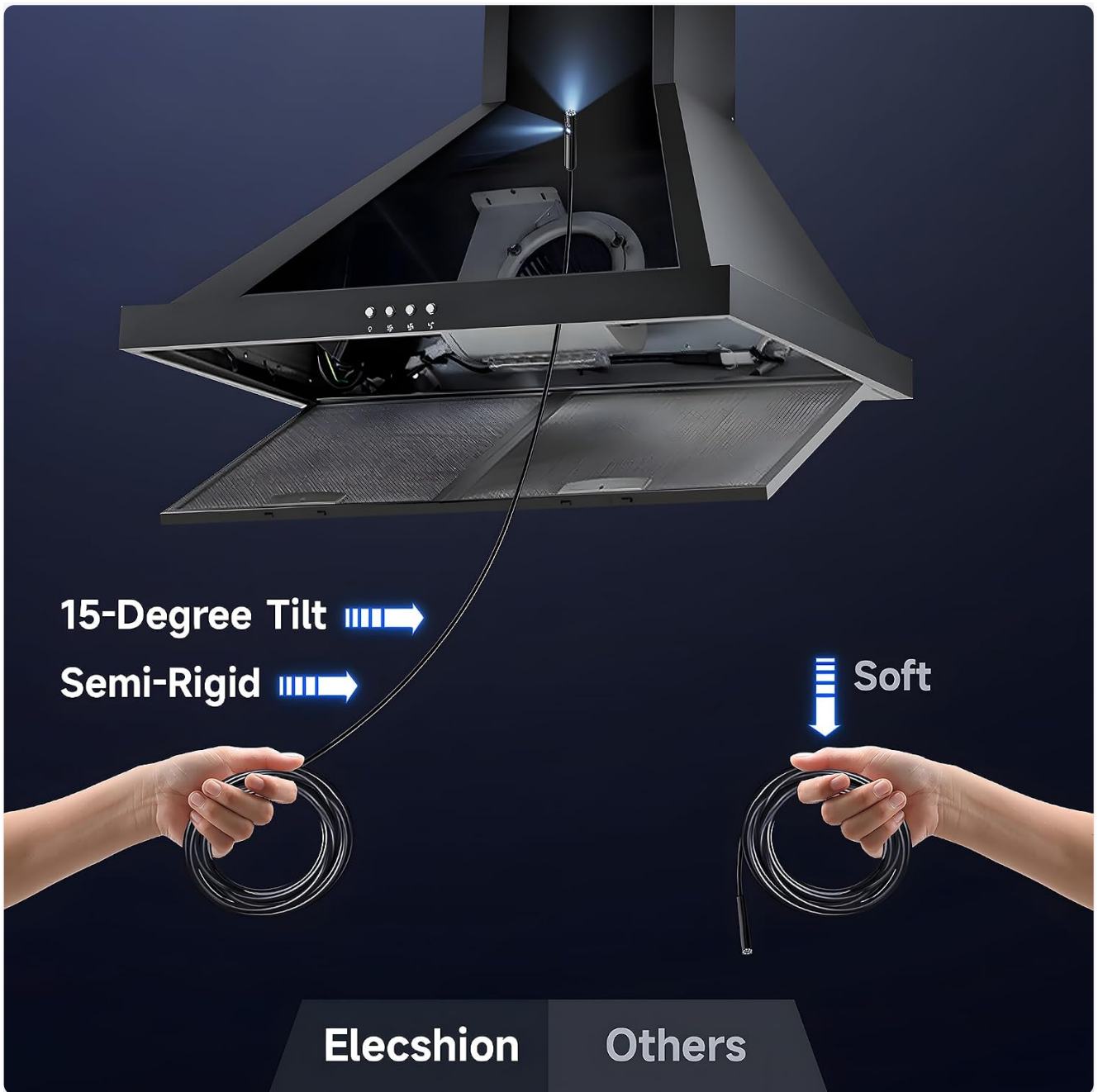


Image: Explains the dual-lens technology, providing sharper images with finer details and different detection angles.



Image: Illustrates how to long-press to switch lenses and slide the button to adjust the brightness of the LED lights.

Image: Provides a closer look at the dual view screen functionality and the physical controls for lens and light adjustments.

5. Applications

The Elecshion Endoscope Camera is a versatile tool suitable for a wide range of inspection tasks, including but not limited to:

- Automotive maintenance and engine inspection
- Internal inspection of pipes and drains
- House inspection for mold, wiring, or pest control
- Inspecting hard-to-reach areas under furniture or appliances
- Examining tire components and brake systems
- Underwater inspections (e.g., fish tanks, submerged pipes)

8 Adjustable Brightness LED Lights



Long press the button to switch lens

Len 1(70°)

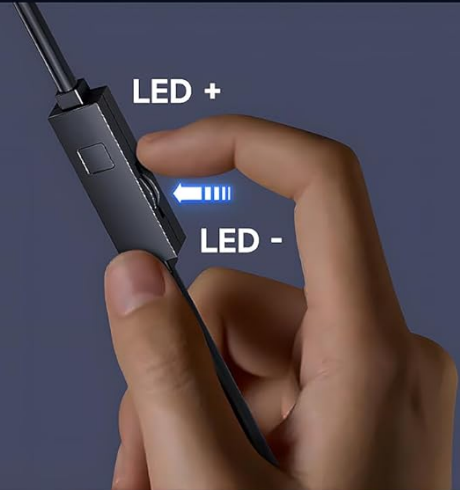
Len 2(45°)



Slide the button to adjust the brightness of the LED light.

LED +

LED -



▶ Focal depth 0.8-4 Inch (2-10cm)

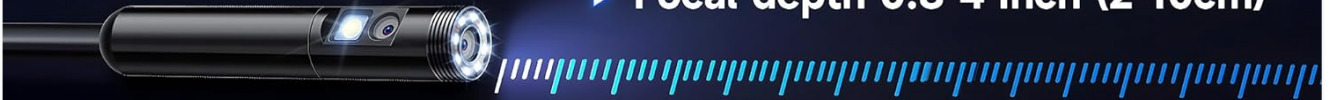


Image: Highlights the semi-rigid cable's ability to bend and hold its shape, making it ideal for various inspection angles.

Compatible with IOS 9.0+ and TYPE-C Devices



Image: Shows the IP67 waterproof design in action, along with the snake cable, hook, magnet, and mirror accessories.

Plug and Go

Easy to use, watch live detection footage



01 Download the "UseePlus" APP



02 Plug the Endoscope into your device



03 Click on the control switch to switch to the scene captured by another lens.

Image: Illustrates the broad compatibility with iOS and Type-C devices, and diverse uses like inspecting under sinks, behind refrigerators, and inside vents.

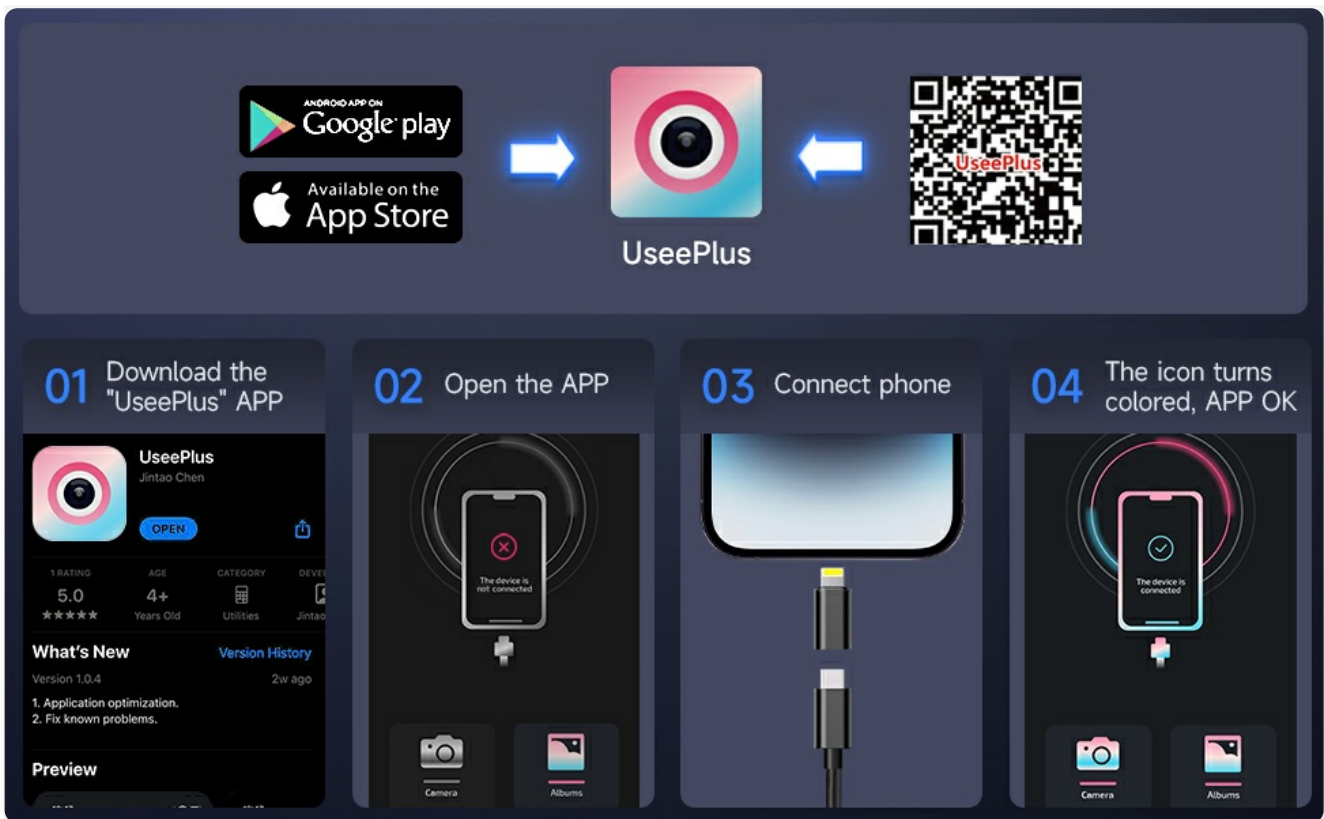


Image: Depicts the endoscope's utility in various practical situations, from car engines to household plumbing.

6. Maintenance

To ensure the longevity and optimal performance of your endoscope camera, follow these maintenance guidelines:

- **Cleaning:** After each use, especially in dirty or wet environments, gently wipe the camera probe and cable with a soft, damp cloth. For stubborn grime, a mild soap solution can be used, followed by a clean, damp cloth. Ensure the probe is dry before storage.
- **Storage:** Store the endoscope in a cool, dry place, away from direct sunlight and extreme temperatures. Coil the cable loosely to prevent kinks or damage.
- **Waterproof Care:** While the probe is IP67 waterproof, avoid prolonged submersion beyond specified limits (up to 3.28 feet for 1 hour). Always ensure the connection points are dry before plugging into your device.

7. Troubleshooting

If you encounter issues with your Elecshion Endoscope Camera, try the following solutions:

Problem	Possible Solution
No image on screen / App not connecting	<p>Ensure the endoscope is securely plugged into your device.</p> <p>Verify that your smartphone/tablet supports OTG function (for Android) or is compatible with the adapter (for iOS).</p> <p>Check if the "UseePlus" app has necessary permissions (camera, storage).</p> <p>Restart the app or your device.</p>
Poor image quality / Dark image	<p>Adjust the brightness of the LED lights using the inline control button.</p> <p>Clean the camera lens if it's dirty or smudged.</p> <p>Ensure the focal distance is within the optimal range (0.8-4 inches / 2-10 cm).</p>

Problem	Possible Solution
Endoscope cable is too flexible/rigid	The semi-rigid cable is designed to balance flexibility and rigidity. For more stability, gently pre-bend the cable into the desired shape before insertion.

8. Specifications

Why Choose Elecshion?

Elecshion	 <p>① 70° ② 45°</p> <p>With two camera lenses, larger angle, switch to any screen as your wish.</p>	 <p>Long press to switch + - LED</p> <p>Switch lens and brightness adjustment</p>	 <p>1920*1080P HD resolution</p>	 <p>Premium semi-rigid cable flexes easily and remains semi-rigid</p>	 <p>Threaded mounting accessories, strong and not easy to fall off.</p>
Others	 <p>① 70°</p> <p>One lens, smaller angle</p>	 <p>Unable to switch lens and brightness adjustment</p>	 <p>720P resolution</p>	 <p>Premium semi-rigid cable flexes easily and remains semi-rigid</p>	 <p>Threaded mounting accessories, strong and not easy to fall off.</p>

Image: Key features and specifications of the Elecshion 1920P HD Snake Camera.

Feature	Detail
Model Number	C-E64
Video Capture Resolution	1920x1440 (1080p)
Camera Type	Dual-Lens (2 Million Pixels)
Lighting	8+1 Adjustable LED Lights
Waterproof Rating	IP67
Cable Length	16.5 FT (5M) Semi-Rigid
Optimal Focal Distance	1.2-4 inches (2-10 cm)
Compatibility	iOS 9.0+ and Type-C Android Devices
Color	Black

9. Warranty & Support

Elecshion products are crafted for durability and excellence. We stand behind the quality of our Dual-Lens Endoscope Camera. Should you experience any issues or have questions regarding your product, please do not hesitate to contact our dedicated support team.

For assistance, please refer to the contact information provided on the product packaging or our official website. Our team is ready to assist you with any concerns.

© 2023 Elecshion. All rights reserved.