



Manuals.plus /

› KongNai /

› KongNai Magnetic Drawer Locks User Manual

## KongNai KN-Magnetic Locks

# KongNai Magnetic Drawer Locks User Manual

Model: KN-Magnetic Locks

## INTRODUCTION

---

Thank you for choosing KongNai Magnetic Drawer Locks. This product is designed to enhance child safety in your home by securely locking cabinets and drawers, keeping curious children away from potentially dangerous items. Our hidden magnetic lock system offers a discreet and effective solution without the need for drilling, preserving the aesthetics of your furniture.

## SAFETY INFORMATION

---

- This product is intended for child safety and is not a substitute for adult supervision. Always supervise children.
- Ensure the installation surface is clean, dry, and smooth for optimal adhesive performance.
- Do not install on metal doors or surfaces, as this will interfere with the magnetic operation.
- Keep magnetic keys out of reach of children to prevent unintended access.
- Regularly check the locks for proper function and adhesion. Replace if any damage or weakening is observed.

## PACKAGE CONTENTS

---

Your KongNai Magnetic Drawer Locks package includes:

- 4 x Magnetic Locks
- 1 x Magnetic Key
- Installation accessories (adhesive tapes, installation cradle)



Image: Overview of the KongNai Magnetic Drawer Locks package contents, showing the locks, key, and packaging.

## PRODUCT OVERVIEW

The KongNai Magnetic Drawer Locks consist of two main components: the lock unit and the magnetic key. The lock unit is installed inside the cabinet or drawer, remaining hidden from view. The magnetic key is used to disengage the lock from the outside.

# Keep children out of danger



Image: Detailed view of the magnetic lock and key components, illustrating their function in child safety.

## Key Features:

- **Hidden Design:** Installed inside cabinets, completely invisible from the outside once the door is closed.
- **No-Drill Installation:** Utilizes strong adhesive tapes, eliminating the need for tools or drilling.
- **Magnetic Operation:** Opens with a magnetic key, providing secure closure. The maximum effective magnetic distance is 1.5 inches (3.8mm).
- **Dual Modes:** Features an "Enable" mode for secure locking and a "Disable" mode for frequent access without the key.
- **Versatile Application:** Suitable for various cabinet types, drawers, and cupboards (not for metal doors).



Image: Examples of where the magnetic locks can be applied, including bedstands, drawers, cupboards, and cabinets.



The place where the lock is installed needs to be 38mm long and 34mm wide, please make sure that your cabinet door has enough space to install the cabinet lock

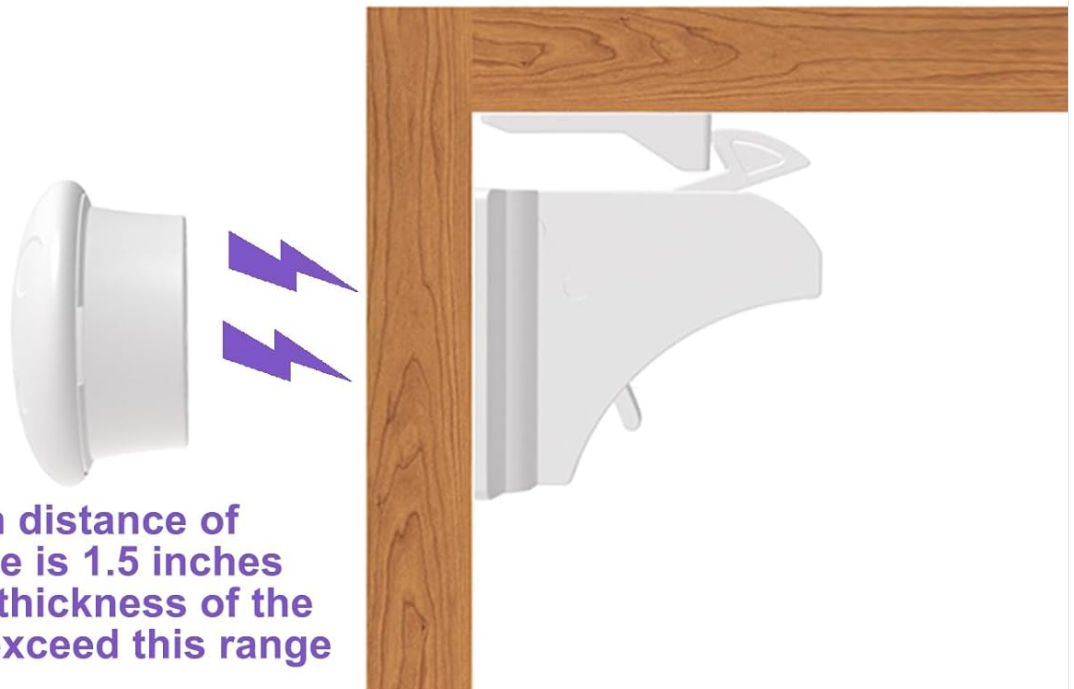


Image: Technical diagram illustrating the dimensions of the lock (38mm long, 34mm wide) and the maximum magnetic force distance of 1.5 inches (3.8mm).

## SETUP AND INSTALLATION

Proper installation is crucial for the effectiveness of the magnetic locks. Please follow these steps carefully. An installation video is also available for visual guidance.

### Installation Video Guide:

Your browser does not support the video tag.

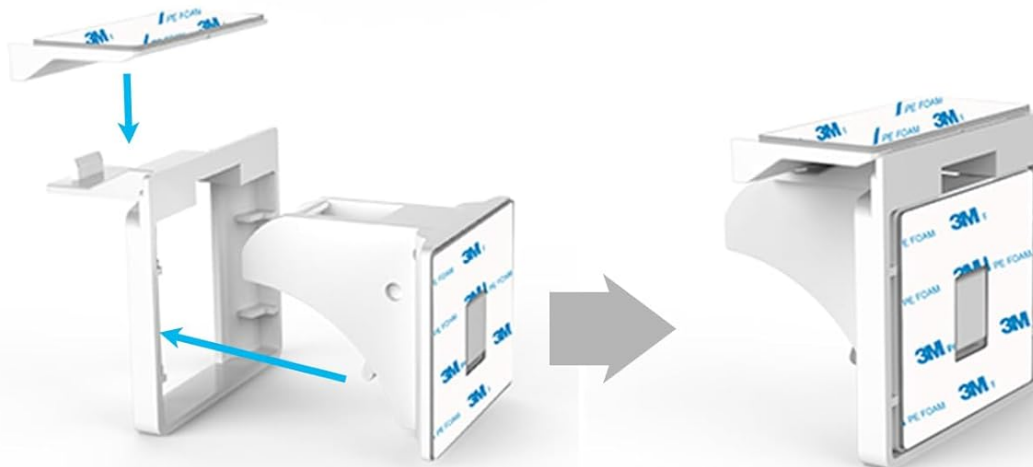
Video: A comprehensive installation guide for the KongNai Magnetic Cabinet Locks, demonstrating each step of the setup process.

### Step-by-Step Installation:

1. **Prepare the Surface:** Clean the inside surface of the cabinet or drawer where the lock will be installed. Ensure it is free of dust, grease, and moisture.
2. **Assemble the Installation Cradle:** Follow the instructions to assemble the installation cradle. This tool helps in

precise placement.

3. **Apply Cradle to Door Thickness:** Apply the cradle to the inside of the cabinet or drawer at a depth equal to the thickness of the door. This ensures the lock aligns correctly when the door is closed.
4. **Attach Lock Unit:** Peel off the adhesive backing from the lock unit and firmly press it onto the prepared surface, using the cradle for alignment. Hold for a few seconds to ensure strong adhesion.
5. **Attach Latch Plate:** Close the cabinet door/drawer. The lock unit will guide the placement of the latch plate on the door frame. Peel off the adhesive backing from the latch plate and press it firmly into place.
6. **Cure Time:** Allow the adhesive to cure for at least 24 hours before regular use to ensure maximum bond strength.



**Assemble the installation cradle first from (Fig1) to (Fig2)**



**Apply the cradle at a depth equal to the thickness of the door. The lock will attach on the door when close the door**

Image: Visual guide for assembling the installation cradle and applying it to match the door thickness for accurate lock placement.

**Note: This magnetic drawer lock is not suitable for metal doors, as metal interferes with magnetic operation.**

## Using the Magnetic Key:

To open a locked cabinet or drawer, simply place the magnetic key on the outside surface of the door, directly over where the hidden lock is installed. The magnetic force will disengage the lock, allowing you to open the door. Remove the key to re-engage the lock when the door is closed.



Image: Illustration of the lock being invisible from the outside and its robust design preventing easy breakage.

## Switching Between Modes (Enable/Disable):

The magnetic locks feature a convenient switch to toggle between "Enable" (locked) and "Disable" (unlocked) modes. This is useful when you need frequent access to a cabinet or drawer without using the key every time.

- **Enable Mode:** In this mode, the lock is active, and the cabinet door cannot be opened without the magnetic key. This is the standard child safety mode.
- **Disable Mode:** To temporarily disable the lock, slide the small lever on the lock unit to the "Disable" position. The lock will remain disengaged, allowing the door to be opened freely without the key. Remember to switch back to "Enable" mode for child safety.

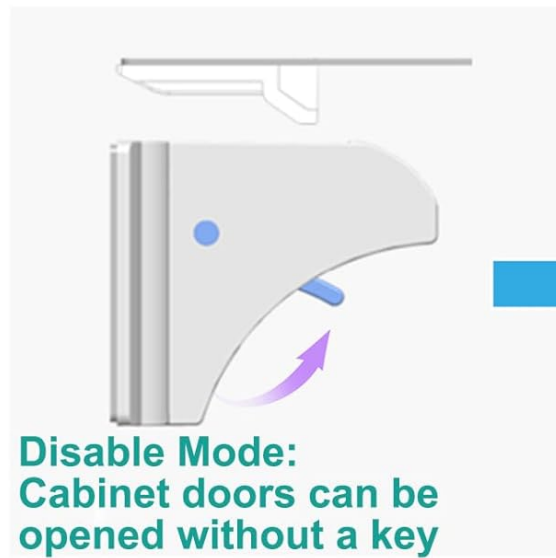
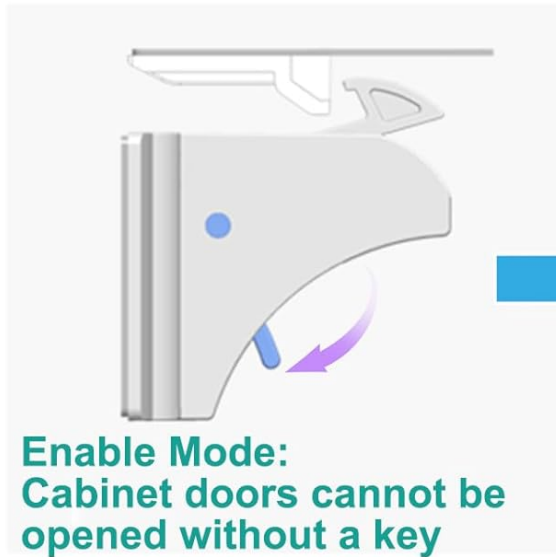


Image: Visual guide demonstrating how to switch the lock between "Enable" (locked) and "Disable" (unlocked) modes.

## MAINTENANCE

---

- **Cleaning:** Wipe the locks and keys with a soft, damp cloth. Do not use abrasive cleaners or solvents.
- **Adhesive Check:** Periodically check the adhesive bond of the locks. If the adhesive appears to be weakening, re-secure or replace the lock.
- **Functionality Check:** Regularly test the locking mechanism with the magnetic key to ensure it operates smoothly.
- **Key Storage:** Store the magnetic key in a safe, accessible location, out of reach of children. Consider using the included key holder if available.

## TROUBLESHOOTING

---

Problem	Possible Cause	Solution
Lock not engaging/disengaging properly.	<p>Lock is in "Disable" mode.</p> <p>Magnetic key not aligned correctly.</p> <p>Distance between key and lock is too great.</p> <p>Installed on a metal surface.</p>	<p>Switch the lock to "Enable" mode.</p> <p>Adjust the position of the magnetic key until the lock disengages.</p> <p>Ensure the cabinet/drawer thickness is within 1.5 inches (3.8mm).</p> <p>Relocate the lock to a non-metal surface.</p>
Lock falling off or adhesive failing.	<p>Surface not cleaned properly before installation.</p> <p>Insufficient cure time for adhesive.</p> <p>Excessive force applied to the lock.</p>	<p>Clean the surface thoroughly and reapply with new adhesive if necessary.</p> <p>Allow at least 24 hours for the adhesive to cure before use.</p> <p>Ensure gentle operation and avoid pulling forcefully on locked doors.</p>
Key lost or misplaced.	Magnetic key is small and can be easily lost.	Store the key in a designated, secure location out of children's reach. Consider purchasing additional keys if available from the manufacturer.

## SPECIFICATIONS

<b>Model Number</b>	KN-Magnetic Locks
<b>Material</b>	Magnet (components are plastic and magnet)
<b>Number of Locks</b>	4
<b>Number of Keys</b>	1
<b>Package Dimensions</b>	4.61 x 2.52 x 1.85 inches
<b>Item Weight</b>	3.52 ounces
<b>Batteries Required</b>	No
<b>Max. Magnetic Distance</b>	1.5 inches (3.8mm)

## WARRANTY AND SUPPORT

For any questions, concerns, or support needs regarding your KongNai Magnetic Drawer Locks, please contact KongNai customer service. Refer to your purchase documentation for specific warranty details.

You can visit the official KongNai store for more information and products: [KongNai Store on Amazon](#)