

GOWENIC PD42

GOWENIC PD42 3D Hologram Projector Fan User Manual

Model: PD42

1. INTRODUCTION

Thank you for choosing the GOWENIC PD42 3D Hologram Projector Fan. This device is designed to create captivating 3D holographic displays for various applications, including advertising and visual presentations. Featuring intelligent WiFi functionality, high-resolution output, and sound playback capabilities, the PD42 offers a dynamic visual experience. This manual provides essential information for the safe and effective use of your projector fan, covering setup, operation, maintenance, and troubleshooting.

2. PACKAGE CONTENTS

Please verify that all items listed below are included in your package. If any items are missing or damaged, please contact customer support.

- 1 x 3D Hologram Projector Fan Main Unit
- 2 x Projector Fan Blades
- 1 x Power Adapter Plug (UK Plug)
- 1 x Remote Control
- 1 x Screwdriver
- 2 x Expansion Bolts
- 10 x Screws
- 1 x User Manual (this document)



Figure 2.1: Included accessories for the GOWENIC PD42 Hologram Projector Fan.

3. PRODUCT OVERVIEW

Familiarize yourself with the main components of the GOWENIC PD42 3D Hologram Projector Fan.

Multiple modes of operation

Support WiFi, mobile APP, computer software and other ways to upload materials, diversified operation at will
Remote control one click to switch your content, easier to use

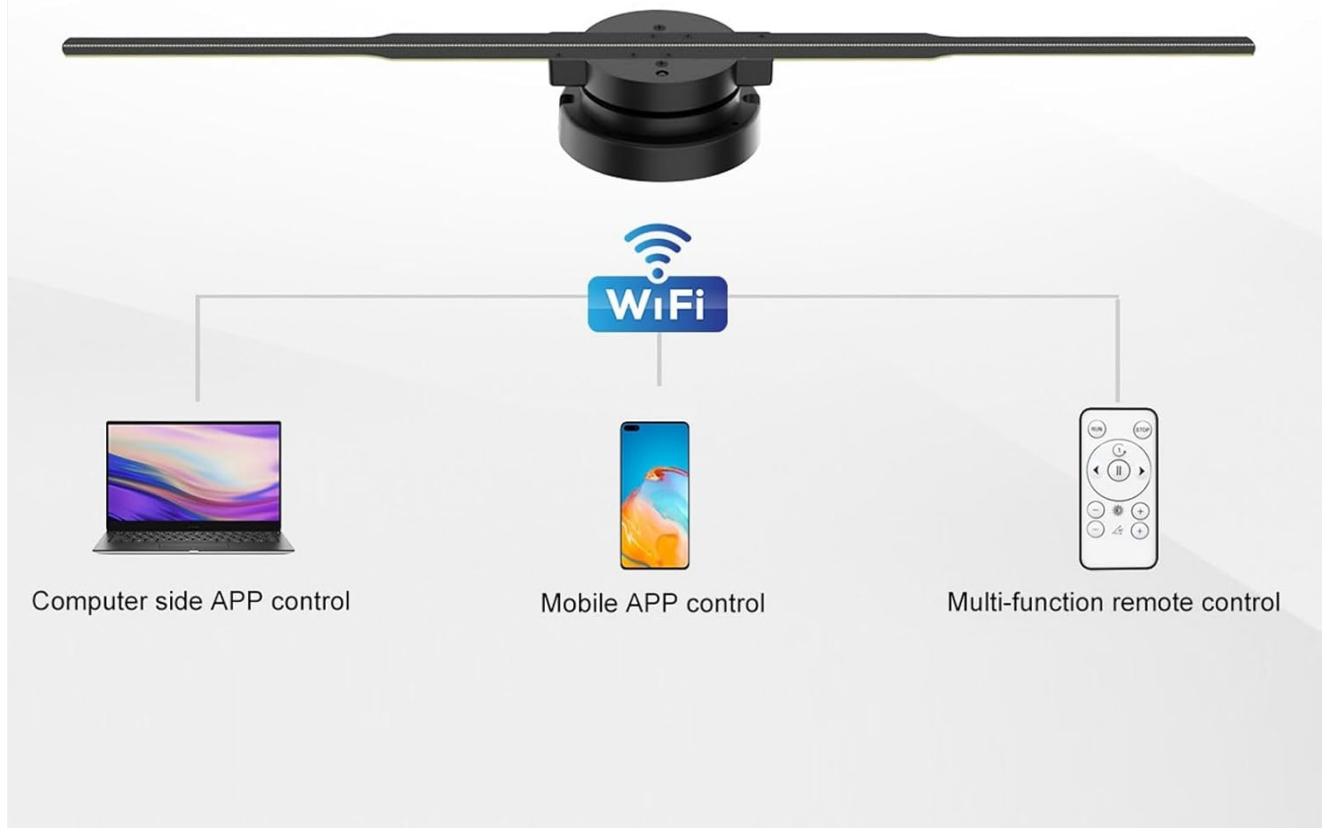


Figure 3.1: Detailed view of the GOWENIC PD42 Hologram Projector Fan components.

- **Main Unit:** Houses the motor, control electronics, and power input.
- **Fan Blades:** Equipped with 244 LED beads for displaying holographic content.
- **Infrared Signal Lamp:** Used for remote control communication.
- **Power Port:** Connects to the power adapter.
- **Memory Card Slot:** For the built-in 16GB memory card, used for content storage.

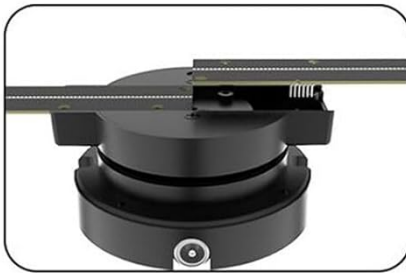
4. SETUP AND INSTALLATION

Follow these steps to assemble and install your projector fan.

1. **Blade Alignment:** Carefully align the two fan blades with the light strip slots on the main engine unit. Ensure they are seated correctly.
2. **Secure Blades:** Use the provided screws and screwdriver to fasten the fan blades securely to the main unit. Do not overtighten.
3. **Mounting:** The device is designed for wall mounting. Use the expansion bolts and screws to securely attach the main unit to a stable wall surface. Ensure the mounting location is clear of obstructions and allows for safe operation of the rotating blades.
4. **Power Connection:** Connect the power adapter plug to the power port on the main unit, then plug the adapter into a compatible 100-240V power outlet.

The disassembly design is smaller

Disassembly design makes the product more concise and lightweight, and the weight is easier to clean, replace parts, maintenance, etc



1: Align two blades with the main engine light strip slots



2: Fasten with screws



3: Installation complete

Figure 4.1: Assembly steps for the GOWENIC PD42 Hologram Projector Fan.

Safety Warning: The fan blades rotate at high speed. Ensure the device is mounted in a location where it cannot be easily accessed or touched by people or objects during operation. Consider installing a protective cover if the device is in a public area.

5. OPERATION

The GOWENIC PD42 offers multiple methods for control and content management.

5.1. Control Methods

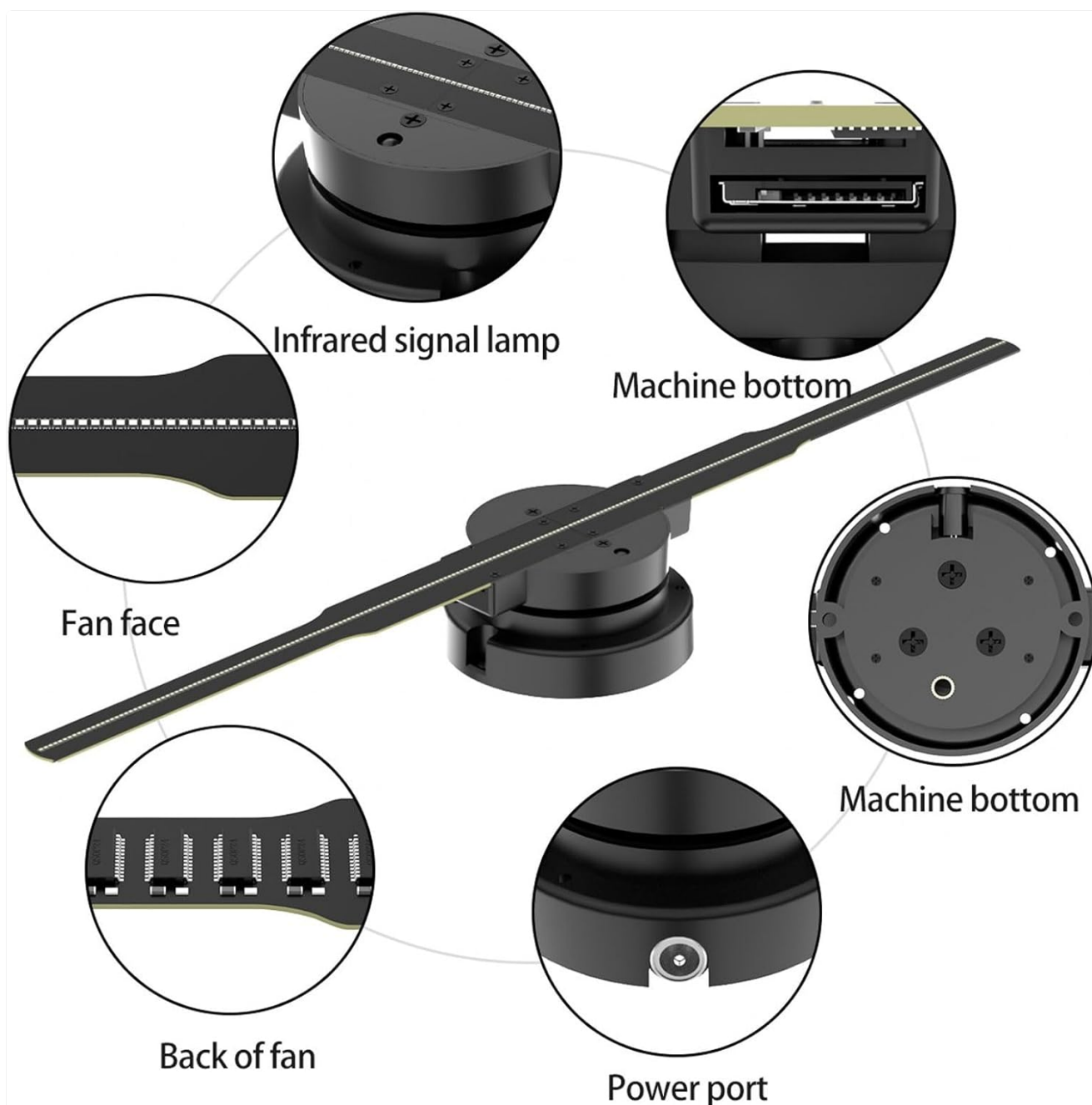


Figure 5.1: Control options for the GOWENIC PD42 Hologram Projector Fan.

- **Mobile APP Control:** Download the dedicated mobile application (details typically provided in a separate quick start guide or on the product packaging/website). Connect your smartphone to the projector's WiFi network to manage content, adjust settings, and control playback.
- **Computer Software Control:** Install the provided computer software (details typically provided in a separate quick start guide or on the product packaging/website). Connect your computer to the projector's WiFi network to upload content, configure settings, and manage the display.
- **Remote Control:** Use the included multi-function remote control for basic operations such as power on/off, play/pause, brightness adjustment, and content switching. Ensure the remote is pointed towards the infrared signal lamp on the main unit.

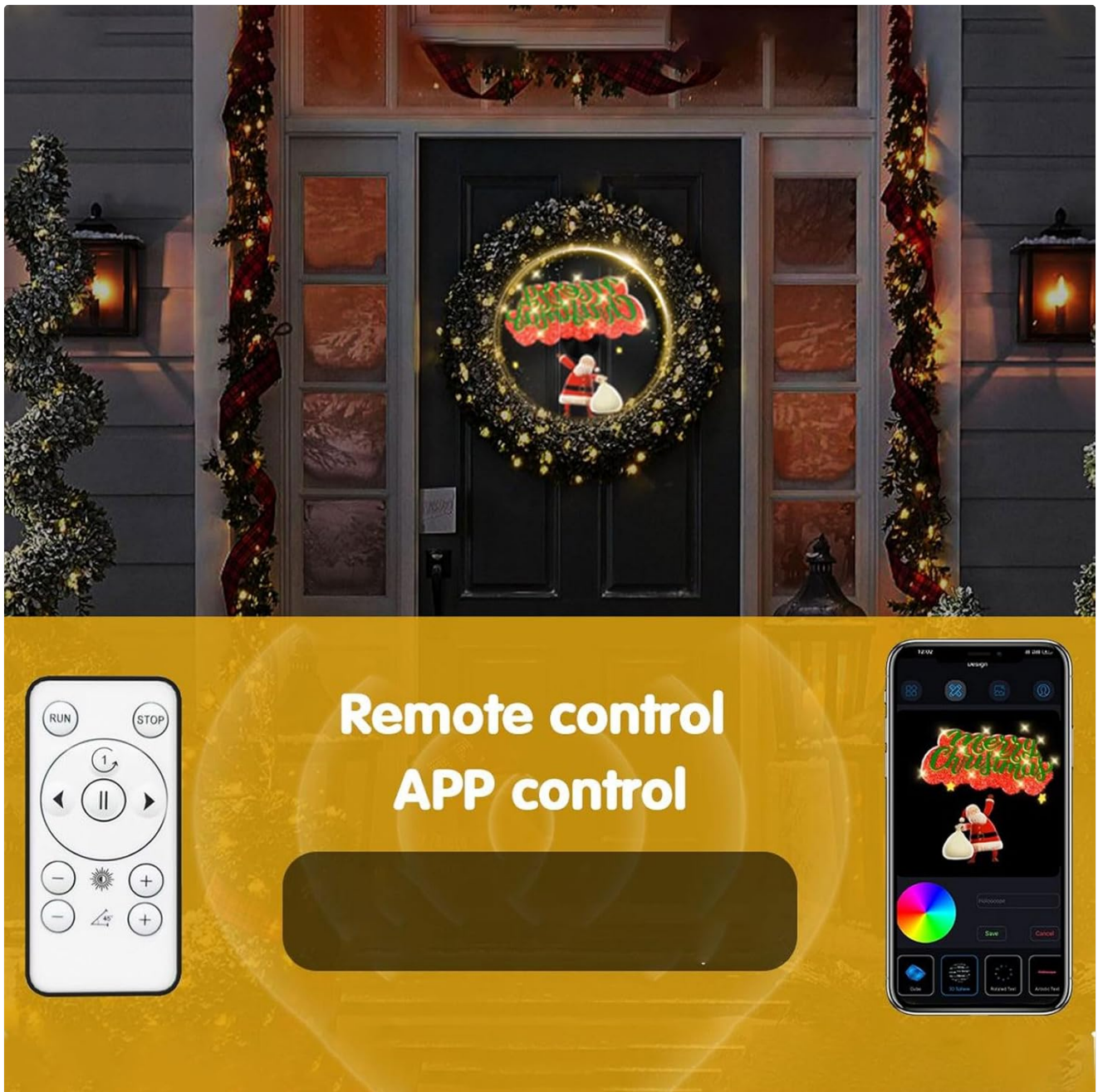


Figure 5.2: Remote and App control in use.

5.2. Content Upload and Management

Content (videos and images) can be uploaded to the projector's built-in 16GB memory card via the mobile app or computer software. Supported formats include MP4, AVI, JPG, and PNG. Refer to the specific app/software instructions for detailed steps on content transfer and playlist creation.

5.3. Basic Operation Sequence

1. **Power On:** Connect the power adapter. The device will typically start automatically or can be powered on using the remote control or app.
2. **Content Playback:** The device will begin playing content from its internal memory. Use the app, software, or remote to select specific content or playlists.
3. **Adjustments:** Use the control methods to adjust brightness and display angle as needed.
4. **Power Off:** Use the remote control or app to safely shut down the device. Disconnect power only after the blades have come to a complete stop.



1.Shutdown state



2.Be starting



3.Holographic effect



Figure 5.3: Display states and example applications.

6. FEATURES AND CAPABILITIES

- **High Resolution Display:** The projector features a 415 x 415mm display diameter with a 1024x640 HD resolution, utilizing 244 warm-colored LED beads for clear and bright visuals.
- **Sound Playback:** Supports both visual and audio content, enhancing the immersive experience.
- **Multiple Device Linking:** Allows for large-scale audiovisual linking without size limitations, enabling impressive synchronized displays.
- **24-Hour Endurance:** Designed for continuous operation for up to 24 hours with a constant power supply, featuring multiple cooling vents to prevent overheating.
- **Customizable APP Design:** Offers customizable options through the mobile application.
- **Customizable Startup Image:** Allows users to set a personalized startup image.

Naked eye 3D holographic advertising machine

42cm circular display, 244 full-color LED, higher brightness, more real picture quality



Lamp beads: 244



Display diameter: 41.5cm



Figure 6.1: Example of a 3D holographic display in action.

7. SPECIFICATIONS

Model	PD42
Display Diameter	Approx. 415 x 415mm (16.3 x 16.3in)
Resolution	1024x640
Number of LED Beads	244
Rated Power	18W
Memory Card Storage	Built-in 16GB Memory Card

Video and Image Formats	MP4, AVI, JPG, PNG
Software Supported Systems	Mobile APP, Computer
Wireless Screen Mirroring	Not Supported
Brightness Adjustment	Supported
Angle Adjustment	Supported
Multiple Device Splicing	Supported
Scheduled Play	Not Supported
Voltage Compatibility	100-240V



Figure 7.1: GOWENIC PD42 Hologram Projector Fan with dimensions.

8. MAINTENANCE

Proper maintenance ensures the longevity and optimal performance of your projector fan.

- **Cleaning:** Gently wipe the fan blades and main unit with a soft, dry cloth. Do not use liquid cleaners or abrasive materials, as they may damage the LEDs or surface.
- **Ventilation:** Ensure the cooling vents are not obstructed to prevent overheating. The design incorporates multiple cooling vents for efficient heat dissipation.
- **Storage:** When not in use for extended periods, store the projector fan in a cool, dry place, away from direct sunlight and extreme temperatures.
- **Blade Inspection:** Periodically check the fan blades for any signs of damage or looseness. If damage is observed, contact customer support for replacement parts.

9. TROUBLESHOOTING

If you encounter issues with your GOWENIC PD42, refer to the following common problems and solutions.

Problem	Possible Cause	Solution
Device does not power on.	No power supply; loose connection; faulty adapter.	Check power cable connection. Ensure the power adapter is plugged into a working outlet. Try a different outlet.

Problem	Possible Cause	Solution
No image displayed.	Incorrect content format; no content loaded; blades not spinning.	Ensure content is in supported formats (MP4, AVI, JPG, PNG). Upload content via app/software. Check if blades are securely attached and spinning.
Remote control not working.	Dead batteries; obstruction; not pointing at IR sensor.	Replace remote control batteries. Ensure no obstructions between remote and device. Point remote directly at the infrared signal lamp.
WiFi connection issues.	Incorrect password; out of range; network interference.	Verify WiFi password. Move closer to the device. Restart the device and your control device (phone/computer).
Image appears distorted or flickering.	Low power; damaged blades; content resolution mismatch.	Ensure stable power supply. Inspect blades for damage. Use content optimized for 1024x640 resolution.

10. WARRANTY AND SUPPORT

The GOWENIC PD42 3D Hologram Projector Fan comes with a **1-year warranty** from the date of purchase. This warranty covers manufacturing defects and malfunctions under normal use. It does not cover damage caused by misuse, accidents, unauthorized modifications, or improper installation.

For technical support, warranty claims, or inquiries about replacement parts, please contact GOWENIC customer service through the retailer where you purchased the product or visit the official GOWENIC website for contact information.