

[Manuals.plus](#) /

> [PayLessHere](#) /

> PayLessHere 3-Piece Wicker Outdoor Furniture Set Instruction Manual

PayLessHere 3 Pieces Wicker Outdoor Furniture

PayLessHere 3-Piece Wicker Outdoor Furniture Set Instruction Manual

Model: 3 Pieces Wicker Outdoor Furniture | Brand: PayLessHere

INTRODUCTION

Thank you for choosing the PayLessHere 3-Piece Wicker Outdoor Furniture Set. This manual provides essential information for the safe assembly, proper use, and effective maintenance of your new furniture set. Please read these instructions carefully before assembly and retain them for future reference.



Image: The complete PayLessHere 3-Piece Wicker Outdoor Furniture Set, featuring two chairs and a coffee table.

PRODUCT COMPONENTS

Before beginning assembly, ensure all parts listed below are present and undamaged. If any parts are missing or damaged, please contact customer support.

- 2 x Rattan Chairs with Cushions
- 1 x Coffee Table with Tempered Glass Top
- Assembly Hardware (screws, wrench, etc.)



Image: Diagram showing the dimensions of the two chairs and one coffee table in inches.

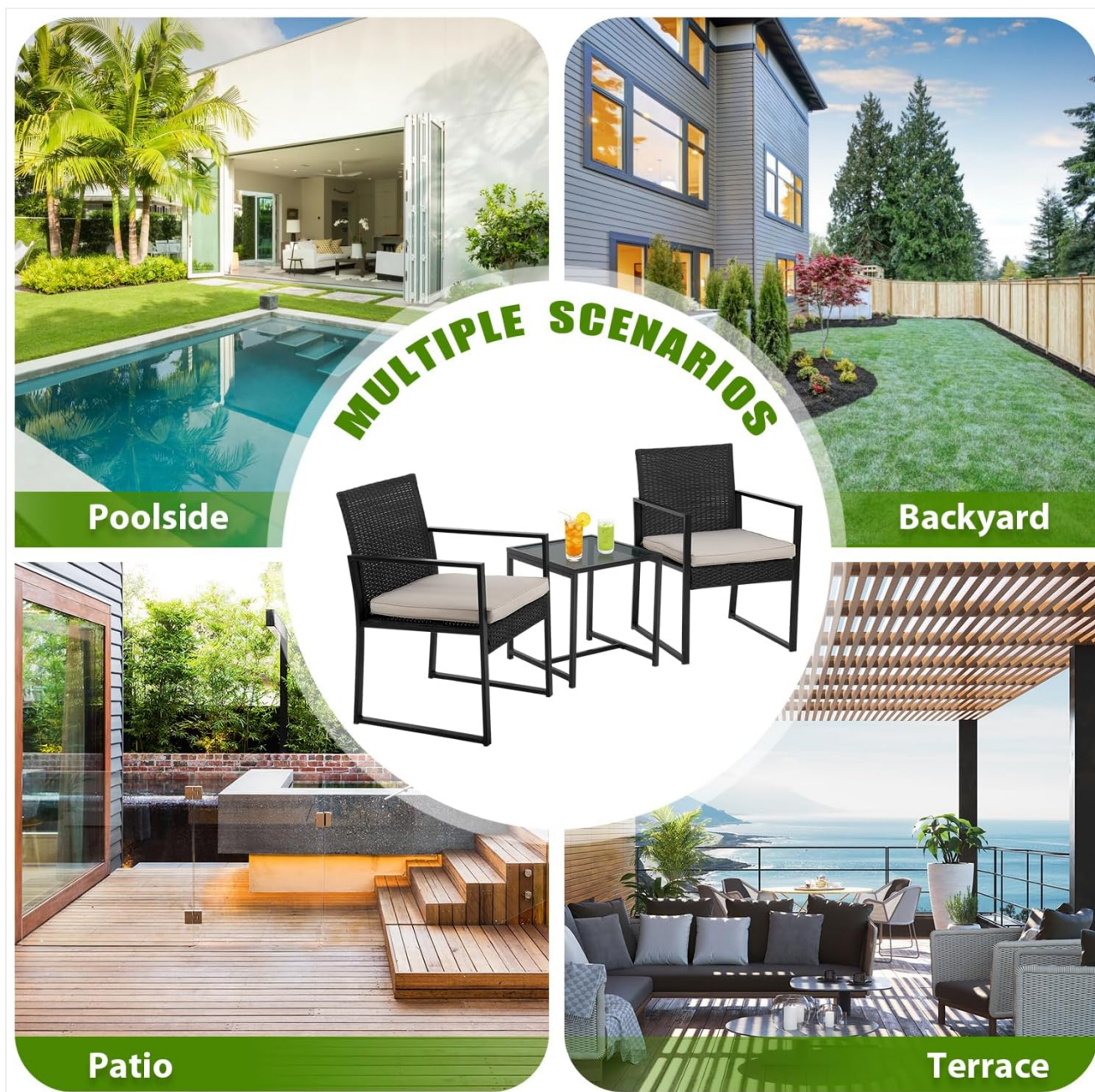


Image: Close-up details of the high-density sponge cushion, removable cushion covers with zippers, durable PE rattan, and sturdy metal frame.

SETUP AND ASSEMBLY

Assembly of your furniture set is designed to be straightforward. All necessary hardware and tools are included. Please follow these steps carefully:

1. Unpack all components and verify against the parts list.
2. Begin by assembling the chair frames. Attach the backrest to the seat base using the provided screws. Do not fully tighten screws until all parts are aligned.
3. Attach the armrests to the assembled chair frames. Ensure proper orientation.
4. Once all chair components are loosely assembled, gradually tighten all screws securely.
5. For the coffee table, attach the legs to the tabletop frame.
6. Place the tempered glass top onto the coffee table frame. Ensure it sits securely.
7. Place the cushions onto the chairs.

Important: Ensure all screws are tightened for stability before using the furniture. Avoid overtightening to prevent damage.



Enjoy Leisure Time in Comfort

Provide you with ample space to rest, eat and meet

Chair X2 Table X1



Image: Visual guide highlighting easy assembly, the tempered glass tabletop, and anti-skid foot mats for stability.

OPERATING AND USAGE

This 3-piece outdoor furniture set is designed for versatile use in various outdoor environments, providing comfortable seating and a convenient surface.

- **Seating:** The two rattan chairs with cushions offer a comfortable seating experience for relaxation or conversation.
- **Coffee Table:** The tempered glass-top coffee table provides a stable surface for beverages, snacks, books, or decorative items.
- **Placement:** The compact design makes this set suitable for multiple locations, including balconies, patios, gardens, poolside areas, and backyards.

Suitable for Many Occasions

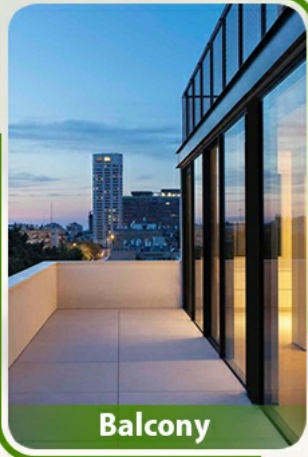


Image: Examples of the furniture set being used in various outdoor settings such as a balcony, poolside, backyard, and patio.



Image: The 3-piece furniture set positioned on a lawn in a garden, demonstrating its aesthetic appeal in an outdoor environment.

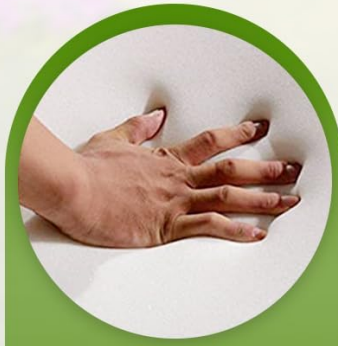
MAINTENANCE

Regular maintenance will help preserve the appearance and longevity of your outdoor furniture set.

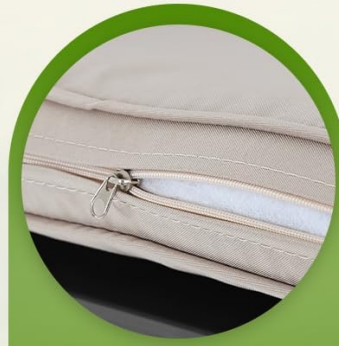
- **Cleaning:** Wipe the metal frame and PE rattan surfaces with a damp cloth. For stubborn dirt, a mild soap solution can be used, followed by rinsing with clean water and drying thoroughly.
- **Cushions:** The cushion covers are removable and feature zippers for easy cleaning. Hand wash or machine wash on a gentle cycle with cold water. Air dry only.
- **Tempered Glass:** Clean the glass tabletop with a glass cleaner and a soft cloth to avoid streaks.
- **Weather Protection:** While the materials are weather-resistant, prolonged exposure to extreme weather conditions (heavy rain, direct sun, snow) can affect durability. Consider using a furniture cover or storing cushions indoors during harsh weather.
- **Inspection:** Periodically check all screws and connections to ensure they remain tight. Retighten as necessary.

HIGH-QUALITY MATERIALS

Simple exterior design to add decor to your patio. It's a great time for two people to spend together



High Density
Sponge Cushion



Removable Covers
with Zipper



Sturdy and Durable
Metal Frame



Image: Detailed view of the PE rattan material, highlighting its resistance to UV rays and waterproof characteristics.

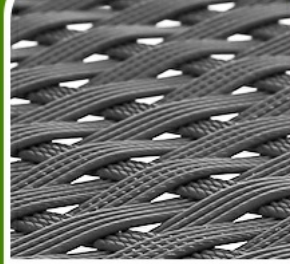
MORE DETAILS



**High Density
Sponge Cushion**



**Removable Covers
with Zipper**



**Waterproof
PE Rattan**



**Durable Steel
Frame**

Image: Visual representation of key material features including high-density sponge cushions, removable covers with zippers, waterproof PE rattan, and a durable steel frame.

TROUBLESHOOTING

This section addresses common issues you might encounter with your furniture set.

- **Difficulty during assembly:** Ensure all parts are correctly oriented according to the instructions. Do not fully tighten screws until all components are in place and aligned. If screws do not align, slightly loosen adjacent screws to allow for adjustment.
- **Wobbly chairs/table:** Check that all screws are securely tightened. Ensure the furniture is placed on a flat, even surface. The anti-skid foot mats should help stabilize the furniture.
- **Cushion fading:** While materials are designed for outdoor use, prolonged direct sunlight can cause some fading over time. Store cushions indoors or use a furniture cover when not in use to minimize exposure.
- **Water retention in cushions:** Ensure cushions are properly dried after rain or cleaning. If covers are removed, allow the inner foam to dry completely before reinserting.

If you encounter issues not covered here or require further assistance, please contact PayLessHere customer support.

SPECIFICATIONS

Brand:

PayLessHere

Model Number:

3 Pieces Wicker Outdoor Furniture

Material:

Metal, PE Rattan

Color:

Khaki

Product Dimensions (L x W x H):

22 x 22 x 29 inches (Chair), 16.5 x 16.1 x 15.5 inches (Table)

Item Weight:

Approximately 33 pounds (total set)

Product Care Instructions:

Wipe with Damp Cloth

UPC:

195030096106

WARRANTY AND SUPPORT

Specific warranty details for this product are not provided in the available information. For warranty claims or detailed support, please contact PayLessHere directly through their official customer service channels. Ensure you have your purchase receipt and product model information available when contacting support.