

DOGNESS F15

DOGNESS Automatic Pet Feeder with Camera User Manual

Model: F15 | Brand: DOGNESS

INTRODUCTION

The DOGNESS Automatic Pet Feeder with Camera is designed to provide convenient and reliable feeding for your pets, ensuring they are fed on schedule even when you are away. Equipped with advanced features such as an HD wide-angle night vision camera, two-way audio, and a long-lasting rechargeable battery, this feeder keeps you connected with your pet and offers peace of mind.

Key features include:

- **HD Wide-Angle Night Vision Camera:** Monitor your pet's eating habits and view the food bowl clearly, day or night.
- **Cordless Design:** Prevents pets from chewing power cords, ensuring uninterrupted feeding.
- **5000mAh Rechargeable Battery:** Provides extended working time, with battery level monitoring via the app.
- **Voice Interaction and HD Video:** Stay connected with your pet from anywhere through two-way audio and live video.
- **Convenient WiFi App Control:** Set feeding times and portions, record feeding audio, capture videos and photos, and receive notifications for food levels and malfunctions.

SAFETY INFORMATION

Please read all instructions carefully before using the feeder. Keep the device away from water and direct heat sources. Ensure the feeder is placed on a stable, level surface to prevent tipping. Use only dry pet food as recommended. Do not allow children or pets to play with the power cord if connected. Always turn off the power switch at the bottom for first-time use or before cleaning.

PACKAGE CONTENTS

- DOGNESS Automatic Pet Feeder (Model F15)
- USB-C Charging Cord
- Stainless Steel Food Bowl
- User Guide



Image: DOGNESS Automatic Pet Feeder with its main components including the feeder unit, food bowl, and a smartphone showing the app interface.

SETUP

1. Unboxing and Assembly

Carefully remove all components from the packaging. The feeder comes with a removable food container and a stainless steel bowl. Insert the stainless steel bowl into the designated slot at the base of the feeder.

Your browser does not support the video tag.

Video: Unboxing and initial assembly of the DOGNESS Automatic Pet Feeder, showing how to remove packaging, insert the food bowl, and access internal components.

2. Initial Power On and Charging

For first-time use, locate the power switch at the bottom of the feeder and turn it on. The feeder is equipped with a 5000mAh rechargeable battery. Use the provided USB-C charging cord to charge the device. The cordless design allows flexible placement anywhere in your home.



Image: The cordless design of the feeder highlighting the internal rechargeable batteries and the absence of a power cord, preventing pet chewing.

3. App Download and Connection

Download the DOGNESS app from your app store (Google Play or Apple App Store). Follow the in-app instructions to connect the feeder to your 2.4G WiFi network. Ensure Bluetooth is enabled on your mobile phone for initial pairing. If the app cannot find the device, scan the QR code located on the back of the feeder.

HOW TO CONNECT TO THE FEEDER?

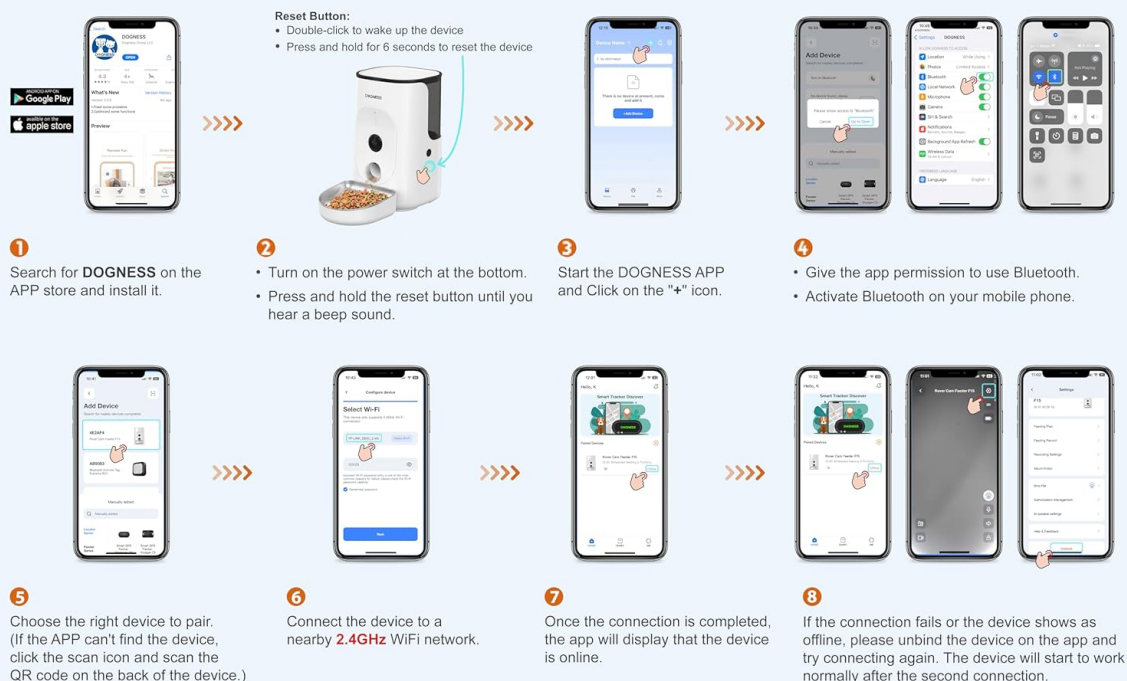


Image: A visual guide demonstrating the step-by-step process of connecting the DOGNESS feeder to the mobile application via WiFi and Bluetooth.

OPERATING INSTRUCTIONS

1. Filling the Food Container

To fill the feeder, press the release buttons on the sides to remove the top food container. Fill it with dry pet food. The feeder is recommended for storing dry pet food with a size between 2-12mm (0.08-0.47in) to reduce jamming. It supports dry food, freeze-dried food, and mixed food.



Images: Demonstrating how to remove the food container by pressing the side buttons and a view of the empty container.

Reduce Food Jamming

Recommended for storing 2-12mm (0.08-0.47in) of dry pet food



Image: Guide for recommended food sizes (2-12mm) and types (dry, freeze-dried, mixed) to prevent food jamming.

2. Manual and Scheduled Feeding

Use the DOGNESS app to set up feeding schedules. You can customize feeding times and portion sizes. The app also allows for manual feeding, dispensing a set number of portions instantly.

Convenient App Control

Worry-Free Travel & Business Trips

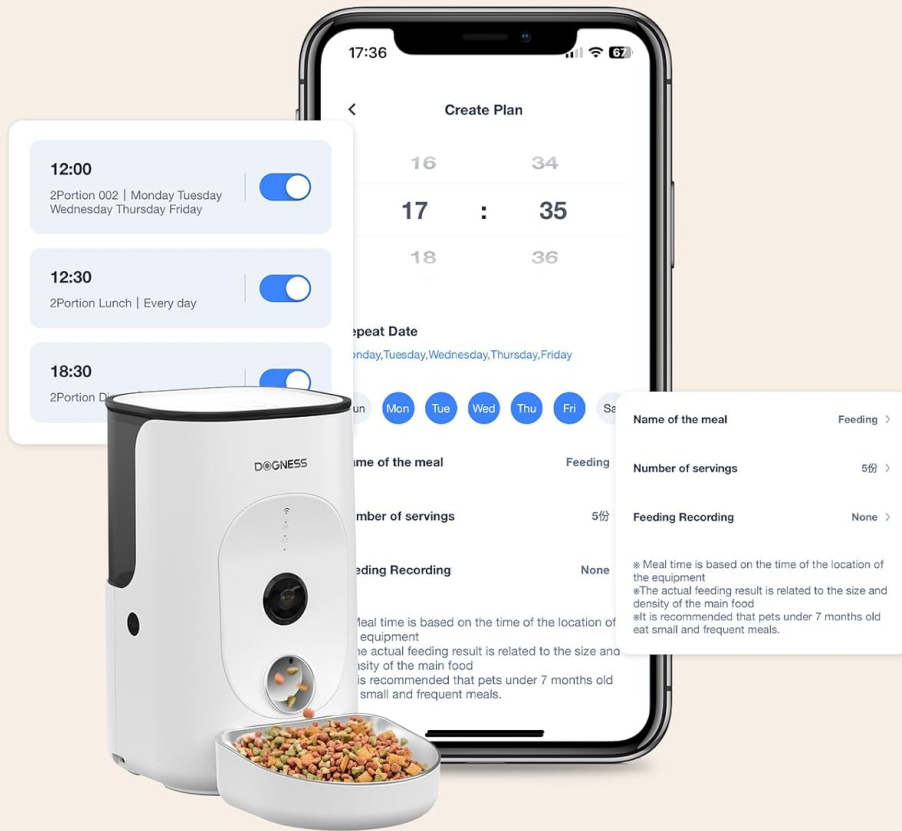


Image: The mobile app interface showing options for creating and managing feeding plans, including setting times and number of servings.

Your browser does not support the video tag.

Video: Demonstration of manual feeding and how the app tracks feeding records, showing food being dispensed into the bowl.

3. Voice Interaction and Video Monitoring

The built-in 1080P HD camera with night vision allows you to monitor your pet and the food bowl. Use the two-way audio feature to interact with your pet remotely. You can also record feeding audio, capture videos, and take photos directly from the app.

Voice Interaction & HD Video

Connect with Your Pet Anywhere

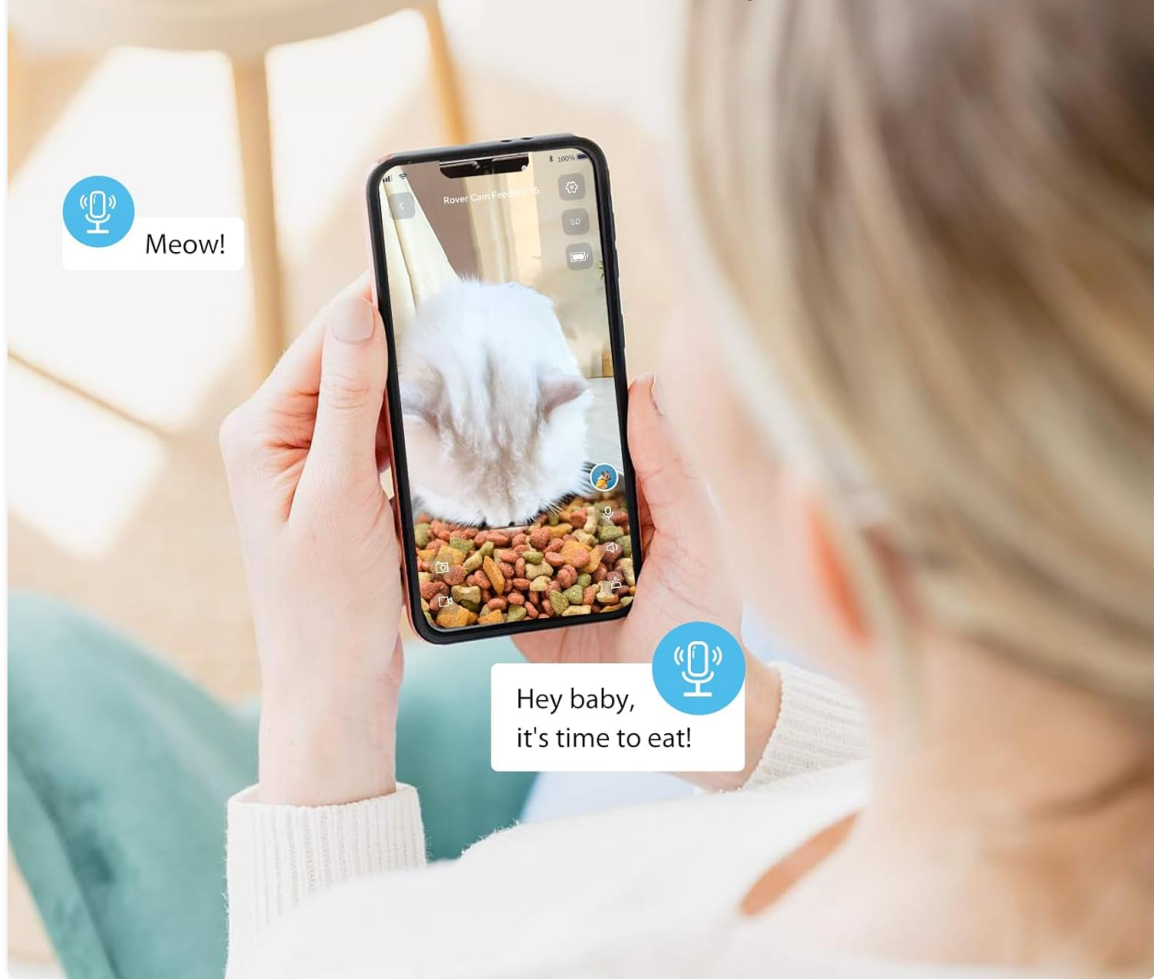


Image: A user interacting with their pet via the app, demonstrating the voice interaction and HD video capabilities of the feeder.

MAINTENANCE

1. Cleaning the Food Bowl and Container

The stainless steel food bowl is removable for easy cleaning. It is recommended to hand wash the bowl. The internal food container can also be removed for thorough cleaning to ensure hygiene.



Image: A close-up view of the removable stainless steel food bowl, designed for easy cleaning.

2. Moisture-Proof Pad

The feeder includes a moisture-proof pad located in the lid to help keep the pet food fresh and dry. This pad can be replaced as needed to maintain optimal food freshness.



Image: A view of the moisture-proof pad integrated into the lid of the pet feeder, designed to keep food fresh.

TROUBLESHOOTING

If you encounter issues with your DOGNESS Automatic Pet Feeder, please refer to the following common solutions:

- **Feeder not dispensing food:** Check for food blockages in the dispenser mechanism. Ensure the food size is within the recommended 2-12mm range. Verify that the food container is properly seated.
- **App connectivity issues:** Ensure your feeder is within range of a 2.4G WiFi network. Restart both the feeder and your router. Re-attempt the pairing process in the app, ensuring Bluetooth is active.
- **Battery not charging/holding charge:** Ensure the USB-C cable is securely connected to both the feeder and a working power source. Allow sufficient time for charging. If issues persist, contact customer support.
- **Camera not working:** Check your network connection. Ensure the camera lens is clean and free from obstructions.

For more detailed troubleshooting or persistent issues, please contact DOGNESS customer support.

SPECIFICATIONS

Feature	Detail
Model Name	F15-White
Dimensions (LxWxH)	7.87 x 7.08 x 12.91 inches
Item Weight	5.07 Pounds (2299.99 Grams)

Capacity	4L
Battery	5000mAh Rechargeable (2 Lithium Ion batteries included)
Connectivity	2.4G WiFi, Bluetooth
Camera	1080P HD with Night Vision
Special Features	Two-Way Audio, Cordless, Smart App Control, Low Food Sensor, Blockage Alerts
Material	Alloy Steel, Acrylonitrile Butadiene Styrene
Care Instructions	Hand Wash Only (bowl)



Image: Visual representation of the dimensions of the DOGNESS Automatic Pet Feeder.

WARRANTY & SUPPORT






This DOGNESS Automatic Pet Feeder comes with a **12 Months Warranty** from the date of purchase.

For product support, warranty claims, or any inquiries, please visit the official DOGNESS website or contact their customer service team. You can also refer to the contact information provided in the original product packaging.

[Visit the DOGNESS Store on Amazon](#)

© 2024 DOGNESS. All rights reserved.

Related Documents - F15

	<p>Dogness Smart Cam Feeder User Manual</p> <p>Comprehensive user guide for the Dogness Smart Cam Feeder, detailing setup, features, operation, and maintenance for pet owners. Includes information on HD camera, night vision, app control, and scheduled feeding.</p>
	<p>Dogness App Feeder F03 Instruction Manual</p> <p>Comprehensive instruction manual for the Dogness App Feeder F03, covering setup, app connection, troubleshooting, and safety precautions for automated pet feeding.</p>
	<p>Dogness Smart Cam Feeder F01 User Manual</p> <p>User manual for the Dogness Smart Cam Feeder F01, detailing specifications, installation, and usage instructions for this smart pet feeder.</p>
	<p>Dogness App Feeder F03 FCC Compliance Information</p> <p>FCC compliance details for the Dogness App Feeder Model F03, manufactured by Dongguan Jiasheng Enterprise Co., Ltd. Includes FCC ID and operating conditions.</p>
<p>User Manual Smart Pet Feeder</p>  <p>THANKS FOR CHOOSING OUR AUTOMATIC PET FEEDER</p>	<p>F15C Smart Pet Feeder User Manual and Setup Guide</p> <p>Comprehensive user manual for the F15C Smart Pet Feeder, covering setup, operation, maintenance, and troubleshooting. Learn how to install, power on, fill, and use the automatic pet feeder for your pets.</p>

