

Anker A2154

Anker 112W 6-Port Charging Station User Manual

Model: A2154

1. PRODUCT OVERVIEW

1.1 Package Contents

- Anker Charger (112W, 6 Ports)
- Cable Organizer
- Welcome Guide
- 18-month Warranty Card
- Customer Service Information

1.2 Key Features

The Anker 112W 6-Port Charging Station is designed to efficiently power multiple devices simultaneously. It features a total output of 112W distributed across 3 USB-C ports and 3 USB-A ports, making it suitable for a wide range of electronics from laptops to smartphones.

- **6-in-1 Charging:** Power up to six devices concurrently, including laptops, tablets, and smartphones. Note that 30W charging is exclusively available on the USB-C1 port for devices like the MacBook Air.
- **Efficient Power Delivery:** Capable of charging a MacBook Air to 50% in approximately 1 hour and 40 minutes, or an iPhone 16 Pro Max from 0% to 50% in 30 minutes via a single 30W max charging port.
- **112W Total Output:** Provides ample power for various devices with its combination of USB-C and USB-A ports.
- **Integrated Cable Management:** Includes a silicone cable organizer to help maintain a tidy and organized workspace, reducing cable clutter.
- **Advanced Safety Features:** Equipped with MultiProtect technology, offering output high-voltage protection, output current regulation, automatic current matching, short-circuit

protection, static resistance, and output temperature control for safe and reliable charging.



The Anker 112W 6-Port Charging Station, showing its compact design, multiple ports, power cable, and included cable organizer.



6-in-1 Fast Charging Station

Convenient Multi-Device Charging



Illustration of the 6-in-1 Fast Charging Station in use, demonstrating its ability to charge various devices simultaneously, including laptops, tablets, smartphones, and wearables.

Huge Compatibility

With a USB-A to USB-C or
USB-C to USB-C Cable



iPhone 15
Series



Samsung S24 /
23 / 22 / 21 Series



Google Pixel
7 / 6 Pro



Samsung Z
Flip5 / 4



Sony Xperia
1 V



iPad Pro / Air
Mini Series



AirPods 3



AirPods Pro 2



Samsung Galaxy
Buds2 / 2 Pro / Live

With a USB-A to Lightning or
USB-C to Lightning Cable



iPhone 14 / 13 / 12 Series

With an Apple Watch Magnetic
Fast Charger to USB-C Cable



Apple Watch Series 9 / 8 / 7

With a Galaxy Watch Active
Wireless Charger



Samsung Galaxy Watch5 / 4 Series

When Using USB-C1 Port with
a USB-C to USB-C Cable



MacBook Air Series



Samsung Galaxy Tab S8 Series



Diagram illustrating the six MultiProtect safety features integrated into the Anker 112W Charging Station, ensuring secure and reliable power delivery.

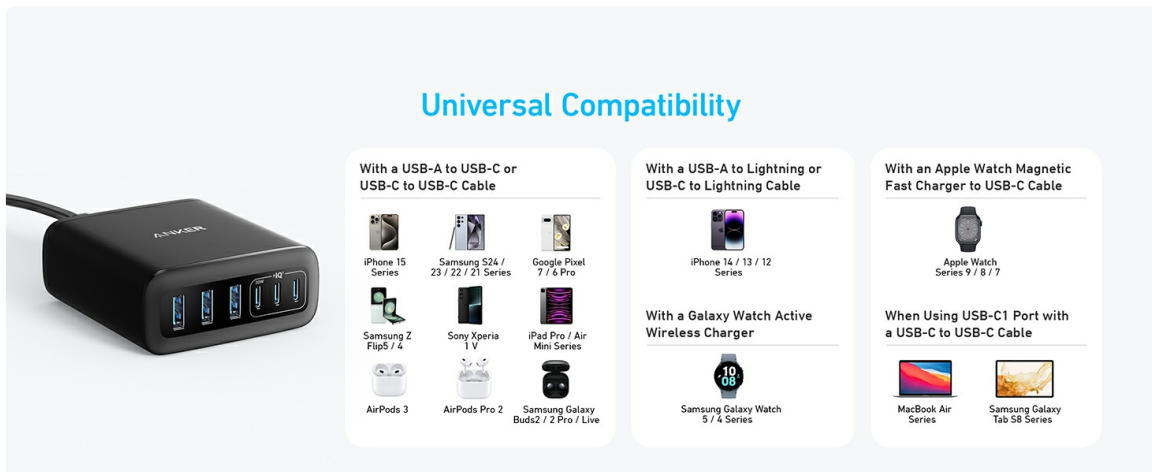
2. SETUP

2.1 Connecting to Power

1. Connect the provided power cable to the AC input port on the back of the Anker Charging Station.
2. Plug the other end of the power cable into a wall outlet.

2.2 Using the Cable Organizer

The included silicone cable organizer helps keep your charging cables neat and prevents them from falling off your desk. Peel off the adhesive backing and attach it to a clean, flat surface on your desk or workstation. Insert your charging cables into the slots to keep them organized and easily accessible.



The Anker 112W Charging Station on a desk, demonstrating the use of the included cable management organizer to keep cables tidy.



A visual comparison showing a cluttered desk with tangled cables (Before) and an organized desk with cables managed by the charging station and organizer (After).

3. OPERATING INSTRUCTIONS

3.1 Charging Devices

Simply connect your devices to the available USB-C or USB-A ports using appropriate charging cables. The charging station will automatically detect your device and deliver the optimal charging speed up to its maximum output per port or total output.

Port Output Allocation:

- **USB-C1 Port:** Supports up to 30W max output. Ideal for fast charging compatible laptops like MacBook Air.
- **Other USB-C Ports:** Provide standard fast charging.
- **USB-A Ports:** Provide standard charging.

- **Total Output:** The combined maximum output for all 6 ports is 112W. Power is intelligently distributed among connected devices.

Single Port 30W Max

Charge an iPhone 15 Pro Max to

50% in 30 Minutes



The 30W power output is limited to USB-C1 only.

The Anker 112W Charging Station highlighting the 30W maximum power output available from a single USB-C port, suitable for fast charging devices like the iPhone 15 Pro Max.

Up to 112W Total Output



3× USB-A



3× USB-C

112W Total



 **30W Max**

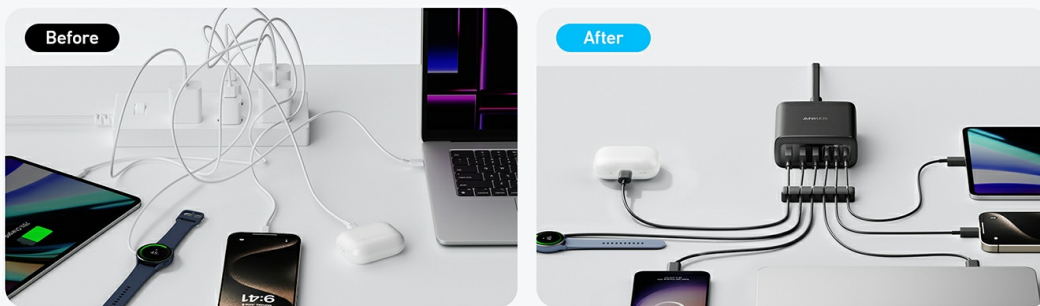
A visual representation of the Anker 112W Charging Station's port configuration, showing 3 USB-A and 3 USB-C ports, with a total power output of 112W.

30W USB-C Full Speed Charging



Detailed charging guide illustrating the individual wattage output for each port on the Anker 112W Charging Station, ensuring consistent power delivery regardless of the number of devices connected.

6-in-1 with Seamless Cable Storage



An advanced charging guide demonstrating various power distribution scenarios when multiple ports are in use on the Anker 112W Charging Station.

3.2 Device Compatibility

The Anker 112W 6-Port Charging Station is compatible with a wide array of devices. Below is a general guide:

- **Using USB-C 1 Port with a USB-C to USB-C Cable:** MacBook Air Series, Samsung Galaxy Tab S8 Series.
- **With a USB-A to USB-C or USB-C to USB-C Cable:** iPhone 15 Series, Samsung S23 / 22 / 21 Series, Google Pixel 7 / 6 Pro, Samsung Z Flip5 / 4, Sony Xperia 1 V, iPad Pro / Air / Mini Series, AirPods 3, AirPods Pro 2, Samsung Galaxy Buds2 / Buds2 Pro / Buds Live.
- **With a USB-A to Lightning or USB-C to Lightning Cable:** iPhone 14 / 13 / 12 Series.
- **With an Apple Watch Magnetic Fast Charger to USB-C Cable:** Apple Watch Series 9 / 8 / 7.
- **With a Galaxy Watch Active Wireless Charger:** Samsung Galaxy Watch5 / 4 Series.

Powered By GaN



A comprehensive compatibility chart for the Anker 112W Charging Station, detailing various devices and the recommended cable types for optimal charging.

4. MAINTENANCE

4.1 Cleaning

To ensure optimal performance and longevity, keep the charging station clean. Use a soft, dry cloth to wipe the exterior. Avoid using abrasive cleaners, solvents, or harsh chemicals, as these may damage the surface or internal components.

4.2 Storage

When not in use for extended periods, store the charging station in a cool, dry place away from direct sunlight and extreme temperatures. Disconnect it from the power outlet before storing.

5. TROUBLESHOOTING

5.1 Common Issues and Solutions

- **Device not charging:**

- Ensure the charging station is properly plugged into a live wall outlet.
- Verify that the charging cable is securely connected to both the device and the charging station.
- Try a different charging cable or port to rule out cable or port issues.
- Check if your device is compatible with the charging station's output.

- **Slow charging:**

- Ensure you are using a high-quality charging cable that supports fast charging.
- Note that the 30W max output is limited to the USB-C1 port. Other ports may provide lower wattage.
- When multiple devices are connected, the total 112W output is shared, which may reduce individual port speeds. Disconnect other devices to test if a single device charges faster.
- Check your device's charging requirements. Some devices may require specific power delivery profiles.

- **Charging station feels warm:**

- It is normal for the charging station to become warm during operation, especially when charging multiple devices or high-power devices.
- Ensure adequate ventilation around the charging station. Avoid covering it or placing it in enclosed spaces.
- If it becomes excessively hot, disconnect it immediately and contact customer service.

6. SPECIFICATIONS

Attribute	Detail
Brand	Anker
Model Number	A2154
Product Dimensions	3 x 3.2 x 1.3 inches
Item Weight	1.01 pounds
Color	Black
Input Voltage	240 Volts
Connectivity Technology	Powerline
Connector Type	USB Type C
Special Feature	Fast Charging
Mounting Type	Tabletop Mount
Manufacturer	Anker
Date First Available	May 6, 2024

7. WARRANTY AND SUPPORT

7.1 Warranty Information

This Anker Charging Station comes with an 18-month warranty from the date of purchase. Please retain your proof of purchase for warranty claims. The warranty covers manufacturing defects and issues arising from normal use.

7.2 Customer Service

For any questions, support, or warranty inquiries, please refer to the contact information provided in the included Welcome Guide or visit the official Anker support website. Our friendly customer service team is ready to assist you.