

Manuals+

[Q & A](#) | [Deep Search](#) | [Upload](#)

[manuals.plus](#) /

› [Skyworth](#) /

› [Skyworth 55 Inch 4K QLED HDR UHD Smart Google TV 55SUF9550P User Manual](#)

Skyworth 55SUF9550P

Skyworth 55 Inch 4K QLED HDR UHD Smart Google TV User Manual

Model: 55SUF9550P

1. INTRODUCTION

Thank you for choosing the Skyworth 55SUF9550P 55-inch 4K QLED HDR UHD Smart Google TV. This manual provides essential information for setting up, operating, and maintaining your new television. Please read this manual thoroughly before using the product to ensure proper and safe operation. Keep this manual for future reference.

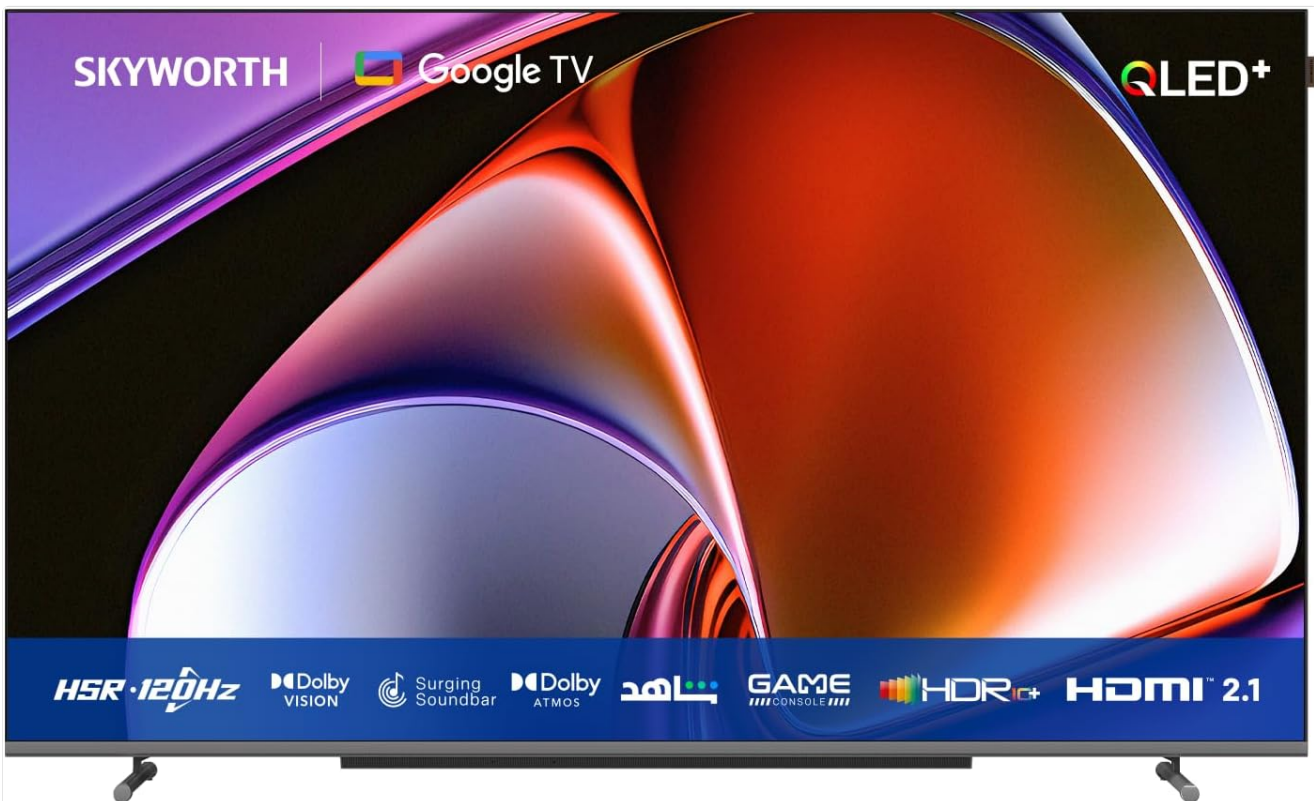


Figure 1.1: Front view of the Skyworth 55SUF9550P television, showcasing its frameless design and QLED display.

2. SAFETY INFORMATION

Always adhere to the following safety precautions to prevent fire, electric shock, or injury.

- Do not expose the TV to rain or moisture.
- Do not open the TV casing; refer all servicing to qualified personnel.
- Ensure proper ventilation around the TV.
- Use only the power cable supplied with the TV.
- Keep the TV away from direct sunlight, heat sources, and strong magnetic fields.
- Clean the TV with a soft, dry cloth. Do not use liquid or aerosol cleaners.

3. WHAT'S IN THE BOX

Verify that all components are present before proceeding with the setup.

- Skyworth 55SUF9550P 55-inch TV
- Power Cable
- Remote Control
- TV Stand (2 pieces)
- Screws for TV Stand
- User Manual (this document)

4. SETUP

4.1 Attaching the TV Stand

1. Carefully place the TV face-down on a soft, flat surface to prevent screen damage.
2. Align each stand piece with the corresponding slots on the bottom of the TV.
3. Secure the stands using the provided screws. Ensure they are tightened firmly.



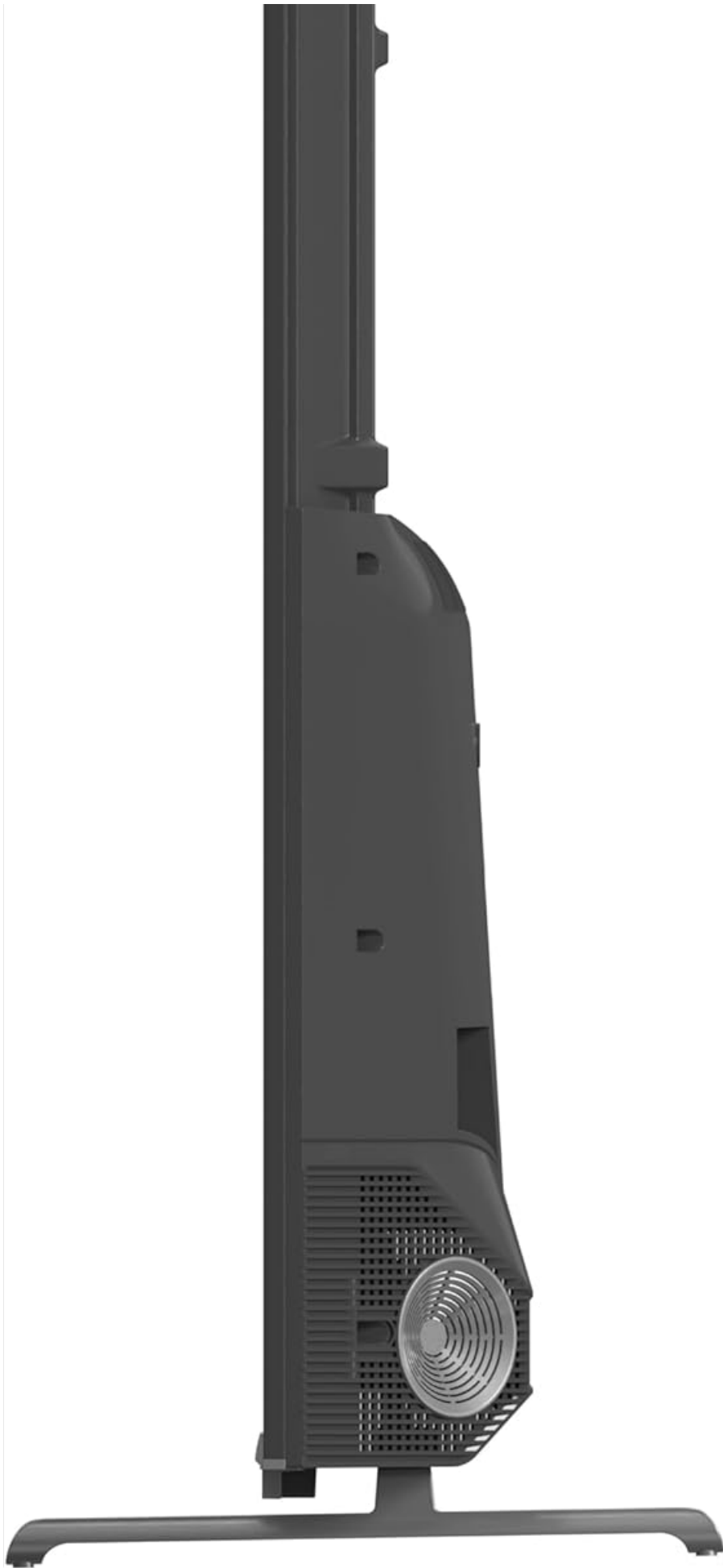


Figure 4.1: Side profile of the television showing the attached stand, indicating stability and design.

4.2 Connecting External Devices

The TV features multiple ports for connecting various devices.

- **HDMI Ports (2 x 2.1, 1 x 2.0):** Connect gaming consoles, Blu-ray players, or set-top boxes. HDMI 2.1 ports support 4K at 120Hz.
- **USB Ports (2 x 2.0):** Connect USB drives for media playback.
- **Ethernet (LAN) Port:** For wired internet connection.
- **Antenna/Cable Input:** For connecting an antenna or cable TV.



Figure 4.2: Rear view of the television, highlighting the placement of HDMI, USB, Ethernet, and other connectivity ports.

4.3 Network Connection

Connect your TV to the internet for Smart TV features.

- **Wi-Fi:** Navigate to Settings > Network & Internet > Wi-Fi and select your network. Enter the password if required.
- **Wired (Ethernet):** Connect an Ethernet cable from your router to the TV's LAN port. The TV will automatically detect the connection.

5. OPERATING

5.1 Basic Operation

- **Power On/Off:** Press the power button on the remote control.
- **Input Selection:** Press the 'Input' button on the remote to switch between HDMI, USB, and other sources.
- **Volume Control:** Use the 'Volume +/-' buttons.
- **Channel Selection:** Use the 'Channel +/-' buttons or number pad.

5.2 Smart TV Features (Google TV)

Your Skyworth TV runs on the Google TV operating system, offering a personalized entertainment experience.

- **Google Assistant:** Use voice commands via the remote control for search, control, and information. The TV also supports Google Far-field voice control.
- **Google Play Store:** Download and install a wide range of apps, including Netflix, YouTube, Shahid, and Amazon Prime Video.
- **Built-in Chromecast:** Cast content from your smartphone, tablet, or computer directly to the TV.

5.3 Picture Settings

Optimize your viewing experience with advanced picture technologies.

- **QLED Display:** Powered by Quantum Dot technology, the TV delivers accurate and vibrant colors with 90% NTSC Wide Color Gamut.
- **4K UHD Resolution:** Enjoy incredibly detailed and sharp images.
- **Dolby Vision & HDR10+/HLG:** Experience enhanced contrast, brightness, and color detail in compatible content.
- **120Hz MEMC Technology:** Motion Estimation, Motion Compensation (MEMC) reduces motion blur and judder, especially in fast-paced scenes, providing a smoother viewing experience.
- **Chameleon Extreme 3.0:** AI-powered processing upgrades content frame by frame for optimized picture quality.



Figure 5.1: QLED technology layers, illustrating how Quantum Dot enhances color.



Figure 5.2: Visual representation of enhanced colors and contrast with Dolby Vision and HDR10+.



Figure 5.3: High-speed scene demonstrating the smoothness provided by 120Hz MEMC technology.

5.4 Audio Settings

The TV is equipped with advanced audio features for an immersive sound experience.

- **Dolby Atmos:** Delivers multi-dimensional sound that moves around you, creating a truly immersive audio experience.
- **Surging Soundbar:** Enhances the volume of voice clarity and provides a strong, three-dimensional surround sound effect.
- **Wave Series Audio:** Products tuned by professional sound engineers for top-notch sound quality.

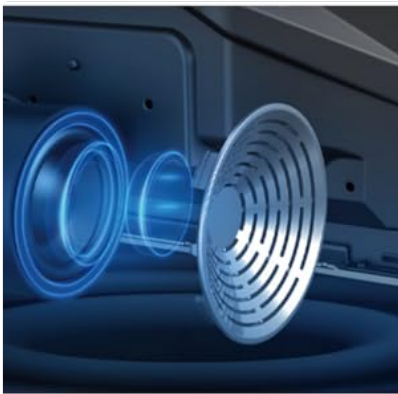


Figure 5.4: Diagram showing the internal components of the Surging Soundbar for enhanced audio.

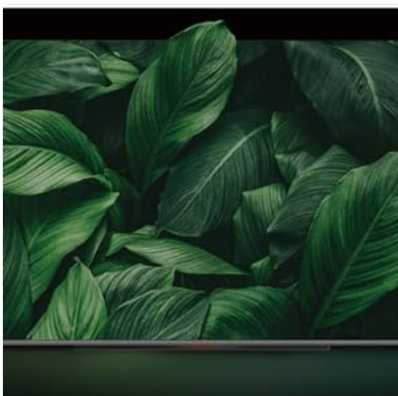


Figure 5.5: Visual representation of the immersive, multi-dimensional sound field created by Dolby Atmos.

5.5 Gaming Features

- **Game Mode:** Automatically optimizes settings for lower input lag and faster response times when a gaming console is detected.
- **120Hz Refresh Rate:** Provides ultra-smooth motion for fast-paced gaming.

6. MAINTENANCE

Proper care ensures the longevity and performance of your TV.

- **Screen Cleaning:** Gently wipe the screen with a soft, lint-free cloth. For stubborn marks, slightly dampen the cloth with water or a specialized screen cleaner (do not spray directly on the screen).
- **Casing Cleaning:** Use a soft, dry cloth to clean the TV casing.
- **Ventilation:** Ensure the ventilation openings on the back of the TV are not blocked to prevent overheating.
- **Power Cord:** Regularly check the power cord for any damage. If damaged, replace it immediately with an approved cord.

7. TROUBLESHOOTING

Refer to this section for common issues and their solutions.

Problem	Possible Cause	Solution
No power	Power cord not connected; outlet malfunction	Ensure power cord is securely plugged in; test outlet with another device.
No picture, but sound is present	Incorrect input source selected; external device issue	Press 'Input' button to select correct source; check external device connection.
No sound, but picture is present	Volume muted or too low; audio cable loose	Unmute volume or increase level; check audio cable connections.
Remote control not working	Batteries dead or incorrectly inserted; obstruction	Replace batteries; ensure correct polarity; remove any obstructions between remote and TV.
Cannot connect to Wi-Fi	Incorrect password; router issue; TV too far from router	Verify password; restart router; move TV closer or use wired connection.

8. SPECIFICATIONS

Detailed technical specifications for the Skyworth 55SUF9550P TV.

Feature	Description
Model Number	55SUF9550P
Screen Size	55 Inches (139.70 cm diagonal)
Display Technology	QLED
Resolution	4K UHD (3840 x 2160)
Refresh Rate	120Hz (MEMC Technology)
HDR Support	Dolby Vision, HDR10+, HLG
Operating System	Google TV
Processor	Chameleon Extreme 3.0
Internal Storage	16GB
RAM	3GB
Audio Output	2 x 10W Speakers
Audio Technology	Dolby Atmos, Surging Soundbar
Connectivity	Wi-Fi (Dual), Bluetooth 5.1, Ethernet (LAN)
Ports	HDMI (2 x 2.1, 1 x 2.0), USB (2 x 2.0)
Special Features	Google Assistant, Built-in Chromecast, Game Mode, Eye Comfort Mode
Product Dimensions (with stand)	123W x 72H x 25.6D cm (approx.)
Product Dimensions (without stand)	123W x 72H x 12D cm (approx.)
Weight (with stand)	13.1 kg
Weight (without stand)	12.8 kg

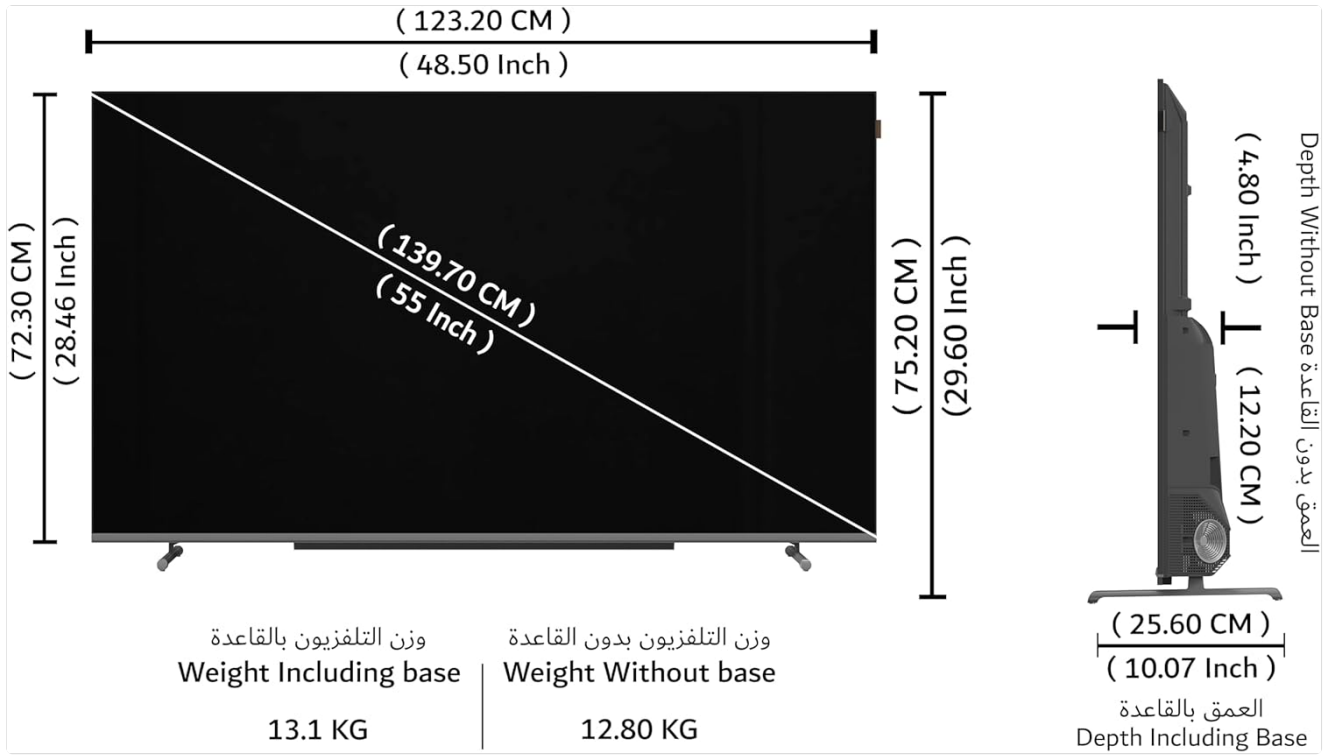


Figure 8.1: Detailed dimensions and weight specifications for the television, both with and without the stand.

9. WARRANTY AND SUPPORT

Your Skyworth 55SUF9550P TV comes with a 2-year manufacturer's warranty.

- **Warranty Coverage:** The warranty covers manufacturing defects and malfunctions under normal use conditions. It does not cover damage caused by misuse, accidents, or unauthorized repairs.
- **Claiming Warranty:** For warranty service, please contact Skyworth customer support with your proof of purchase and product serial number.
- **Customer Support:** For technical assistance, troubleshooting, or service inquiries, please refer to the contact information provided on the Skyworth official website or your purchase documentation.