

Rapoo MT760

Rapoo MT760 Multi-Device Wireless Mouse User Manual

Model: MT760

- [Introduction](#)
- [What's in the Box](#)
- [Setup](#)
- [Operating Instructions](#)
- [Maintenance](#)
- [Troubleshooting](#)
- [Specifications](#)
- [Warranty & Support](#)

1. INTRODUCTION

The Rapoo MT760 is a versatile multi-device wireless mouse designed for enhanced productivity across various platforms. It features multi-mode connectivity, allowing seamless switching between Bluetooth 5.0, Bluetooth 3.0, and 2.4GHz wireless connections. With its ergonomic design, programmable buttons, and adjustable DPI, the MT760 is engineered to provide comfort and precision for extended use.



Image: The Rapoo MT760 Multi-Device Wireless Mouse, showcasing its ergonomic shape and the included USB dongles.

2. WHAT'S IN THE BOX

Please verify that all items are present in the package:

- 1 x Wireless Mouse (Rapoo MT760)
- 1 x USB-C Charging Cable (USB-A to USB-C)
- 2 x USB Dongles (for 2.4GHz wireless connection)

3. SETUP

3.1 Charging the Mouse

Before first use, it is recommended to fully charge the mouse. Connect the provided USB-C charging cable to the mouse's USB-C port and the other end to a USB power source (e.g., computer USB port, USB wall adapter). The mouse features an 800mAh Li-Po battery, providing up to 90 days of battery life on a full charge. Battery life may vary based on usage.

90 Days Battery Life, Works with Wireless Charging System

Add P3 Wireless Charging Module* for continuous wireless charging while at use. Never worry about battery power any more.

-  Qi wireless charging
-  800mAh Li-Po battery
-  USB-C fast charging

* P3 Wireless Charging Module sold separately.

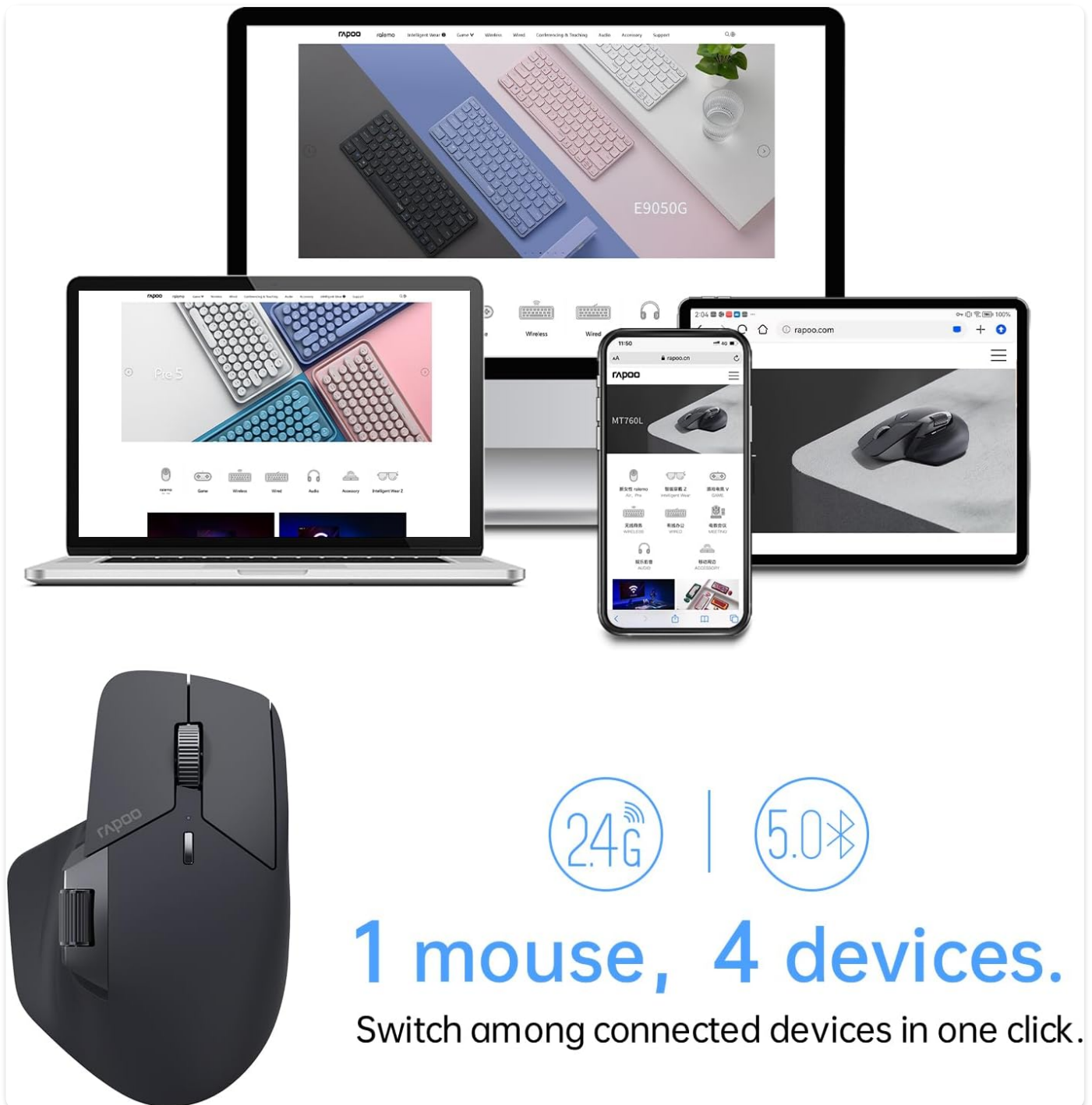


Image: The Rapoo MT760 mouse on a wireless charging pad, illustrating its wireless charging capability (P3 Wireless Charging Module sold separately).

The MT760 also supports Qi wireless charging with compatible mouse pads (P3 Wireless Charging Module needs to be purchased separately).

3.2 Connecting the Mouse

The Rapoo MT760 supports three connection modes: Bluetooth 5.0, Bluetooth 3.0, and 2.4GHz wireless via USB dongle. It can connect to up to 4 devices simultaneously.



The illustration shows a black Rapoo MT760 mouse in the foreground. In the background, four devices are displayed: a desktop monitor showing a website with various keyboards, a laptop showing a website with various keyboards, a tablet showing a website with various keyboards, and a smartphone showing a website with various keyboards. The mouse is shown connecting to these devices via 2.4G and Bluetooth 5.0. The text '1 mouse, 4 devices.' is prominently displayed in blue, followed by 'Switch among connected devices in one click.' in black. Above the text, there are two circular icons: one with '2.4G' and a signal icon, and another with '5.0' and a Bluetooth symbol.

Image: Illustration of the Rapoo MT760 connecting to multiple devices (laptop, desktop, tablet, smartphone) via 2.4G and Bluetooth 5.0.

2.4GHz Wireless Connection:

1. Insert one of the provided USB dongles into an available USB port on your computer.
2. Turn on the mouse using the power switch located on the bottom.
3. The mouse should automatically connect to the dongle. If not, press the device switching button on the bottom of the mouse to select the 2.4G channel (indicated by a specific LED color/pattern, refer to the mouse's LED indicator guide).

Bluetooth Connection (BT1/BT2):

1. Turn on the mouse.
2. Press the device switching button on the bottom of the mouse to select a Bluetooth channel (BT1 or BT2). The LED

indicator for the selected channel will blink slowly.

3. Press and hold the device switching button for 3 seconds until the LED indicator blinks rapidly. This puts the mouse into pairing mode.
4. On your device (computer, laptop, tablet, smartphone), go to Bluetooth settings and search for new devices.
5. Select 'Rapoo MT760' from the list of available devices to complete the pairing process.

3.3 Driver Installation (for M+ Cross-Computer Technology)

To utilize the M+ Cross-Computer Technology feature, which allows seamless cursor movement and file transfer between multiple computers, you must install the Rapoo mouse driver. This function is only compatible with Windows systems and requires all connected computers to be on the same Wi-Fi or Ethernet network.

- Download the latest driver for the Rapoo MT760 from the official Rapoo website.
- Install the driver on all computers you wish to use with the M+ Cross-Computer Technology.
- Follow the on-screen instructions during installation and setup within the software to enable and configure the M+ feature.

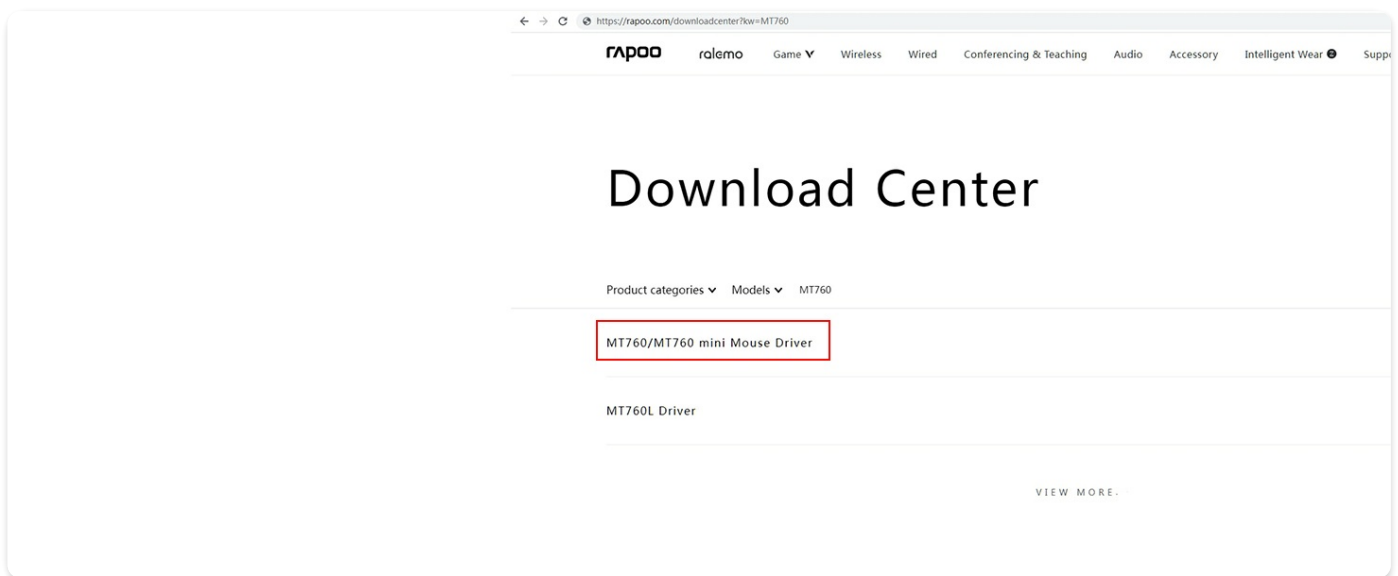


Image: Screenshot of the Rapoo mouse driver software interface, showing options for DPI settings and other configurations.

4. OPERATING INSTRUCTIONS

4.1 DPI Adjustment

The Rapoo MT760 features 7 adjustable DPI levels: 800, 1000, 1200, 1600, 2400, 3200, and 4000. You can cycle through these presets by pressing the DPI button located on the top of the mouse, behind the scroll wheel. The DPI values can also be fine-tuned in 50-interval increments via the mouse driver software.

7 Adjustable DPI Levels

7 preset DPI values (800, 1000, 1200, 1600, 2400, 3200, 4000), you can also adjust the DPI values in 50 intervals via the mouse driver.



Image: Diagram illustrating the 7 adjustable DPI levels of the Rapoo MT760 mouse.

4.2 Programmable Buttons

The MT760 is equipped with 11 programmable buttons, allowing you to customize shortcuts, media keys, or macros to streamline your workflow. These buttons include the standard left/right click, scroll wheel (up/down/middle click), side scroll wheel, forward/back buttons, DPI switch, and a 'DIY' key.

Button functions can be assigned and managed through the Rapoo mouse driver software. Refer to the software's user interface for detailed customization options.

11 Programmable Buttons

Customize shortcuts and function keys to streamline your work and boost productivity.



Image: Labeled diagram showing the 11 programmable buttons on the Rapoo MT760 mouse, including the Hall magnetic induction side scroll wheel.

4.3 M+ Cross-Computer Technology

Once the Rapoo driver is installed on multiple Windows computers connected to the same network, the M+ Cross-Computer Technology enables you to seamlessly move your cursor between screens. Simply drag your cursor to the edge of one screen, and it will appear on the adjacent screen of another connected computer. This feature also allows for easy transfer of text, images, and files by copying on one computer and pasting on another.

M+Cross-Computer Technology

You can switch between different devices by simply moving the cursor to the edge of the screen.
Easily transfer text, images, and files.



Note: You need to install the driver first, this function is only compatible with windows system.

Image: Visual representation of the M+ Cross-Computer Technology, showing seamless copy-paste functionality between two computers using the mouse.

4.4 Surface Compatibility

The Rapoo MT760 utilizes a high-performance laser sensor, providing precise and accurate tracking on a wide variety of surfaces. This includes common desk surfaces like wood, cloth, leather, resin, and paper.

Works on Most Surfaces

Adapts high-performance laser sensor, ideal for more sensitive precision work, provides finer and more accurate tracking on surfaces such as wood, cloth, leather, resin, paper, etc.



Image: The Rapoo MT760 mouse shown on a stack of various materials, demonstrating its ability to track on diverse surfaces.

4.5 Ergonomic Design

The mouse features an ergonomic bow-back design with thumb support, crafted for comfort and to reduce hand strain during prolonged use. Its shape is designed to fit various grip styles and hand sizes, particularly beneficial for users with larger hands.

Comfortable to Use

Ergonomic palm grip and thumb rest, position your hand more naturally and reduce hand strain over long periods of work.



Image: A hand holding the Rapoo MT760 mouse, highlighting its ergonomic shape and comfortable grip.

5. MAINTENANCE

- **Cleaning:** Use a soft, dry cloth to clean the mouse. For stubborn dirt, slightly dampen the cloth with water or a mild cleaning solution. Avoid harsh chemicals or abrasive materials.
- **Sensor Care:** Keep the optical sensor on the bottom of the mouse clean and free from dust or debris to ensure optimal tracking performance.
- **Battery Care:** To prolong battery life, avoid fully discharging the mouse frequently. Charge it when the battery indicator is low. If storing the mouse for an extended period, charge it to about 50% and store in a cool, dry place.
- **Storage:** Store the mouse in a clean, dry environment away from extreme temperatures and direct sunlight.

6. TROUBLESHOOTING

6.1 Connectivity Issues

- **Mouse not responding:** Ensure the mouse is powered on. Check battery level and charge if necessary.
- **2.4GHz connection issues:** Try inserting the USB dongle into a different USB port. Ensure the mouse is set to the 2.4G channel.
- **Bluetooth connection issues:**
 - Ensure Bluetooth is enabled on your device.
 - Make sure the mouse is in pairing mode (LED blinking rapidly).
 - Remove any previous pairings of the MT760 from your device's Bluetooth list and try pairing again.
 - Try connecting to a different Bluetooth channel (BT1 or BT2) on the mouse.
- **Interference:** Move the mouse closer to the receiver/device. Avoid using the mouse near other wireless devices that might cause interference (e.g., Wi-Fi routers, cordless phones).

6.2 M+ Cross-Computer Technology Not Working

- Ensure the Rapoo mouse driver is installed on **all** computers you wish to use with this feature.
- Verify that all computers are connected to the **same Wi-Fi or Ethernet network**.
- Check the settings within the Rapoo driver software to ensure M+ Cross-Computer Technology is enabled and configured correctly.
- Restart the Rapoo driver software or the computers if the issue persists.

6.3 Buttons or Scroll Wheels Not Functioning

- Ensure the mouse is properly connected.
- Check the button assignments in the Rapoo driver software. Reset to default if necessary.
- Clean around the buttons and scroll wheels to ensure no debris is obstructing their movement.

6.4 Mouse Cursor Jumps or is Inaccurate

- Clean the optical sensor on the bottom of the mouse.
- Try using the mouse on a different surface or a mouse pad.
- Adjust the DPI setting to a lower value if the cursor is too sensitive.

Your browser does not support the video tag.

Video: An official demonstration of the Rapoo MT760 Multi-Device Wireless Mouse, showcasing its features and functionality.

7. SPECIFICATIONS

Model Number	MT760
Connectivity Technology	Bluetooth 5.0/3.0, 2.4GHz Wireless (via USB dongle)
DPI Levels	800/1000/1200/1600/2400/3200/4000 (Adjustable)
Programmable Buttons	11
Battery Type	800mAh Lithium Polymer (Li-Po)

Battery Life	Up to 90 days (may vary with usage)
Charging Port	USB-C
Wireless Charging	Enabled (requires P3 Wireless Charging Module, sold separately)
Movement Detection Technology	Optical
Product Dimensions	4.92 x 3.12 x 0.1 inches (125 x 81 x 47 mm)
Item Weight	3.88 ounces (110g)
Manufacturer	Shenzhen Rapoo Technology Co., Ltd.
Country of Origin	China

WIDE COMPATIBILITY



Windows



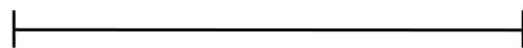
Mac OS



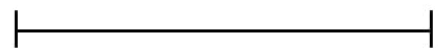
Android



4.92in/125mm



3.19in/81mm



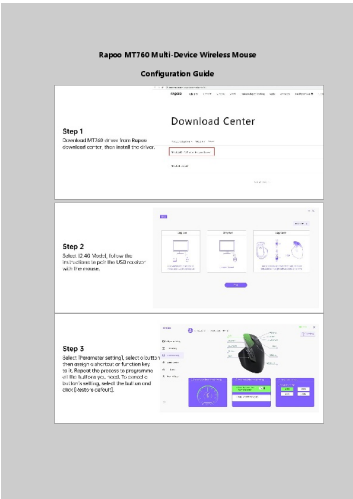
1.85in/47mm

Weight: 3.88oz/110g

Image: Diagram showing the dimensions of the Rapoo MT760 mouse and its wide compatibility with Windows, Mac OS, and Android operating systems.

8. WARRANTY & SUPPORT

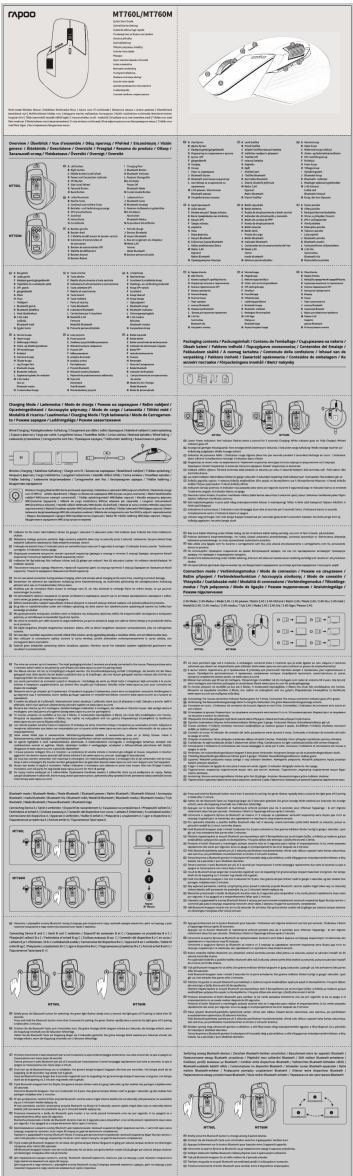
Rapoo products are designed and manufactured to the highest quality standards. For specific warranty information, please refer to the warranty card included with your product or visit the official Rapoo website. If you encounter any issues or require technical assistance, please contact Rapoo customer support through their official channels. You can typically find support contact information on the Rapoo official website or within the product packaging.



[Rapoo MT760 Multi-Device Wireless Mouse Configuration Guide](#)

A comprehensive guide to configuring the Rapoo MT760 Multi-Device Wireless Mouse, detailing driver installation, 2.4GHz pairing, button customization, multi-device switching, and factory reset options.

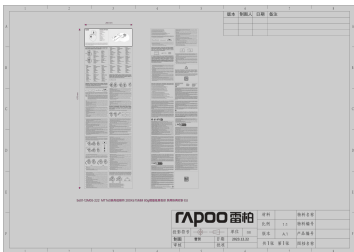
lang: score:37 filesize: 319.41 K page_count: 2 document date: 2024-02-05



[Rapoo MT760L/MT760M Multi-mode Wireless Mouse User Manual](#)

Comprehensive user manual for the Rapoo MT760L and MT760M multi-mode wireless mice. Learn about features, setup, connection modes (2.4GHz, Bluetooth), DPI settings, and ergonomic design for enhanced productivity.

lang: score:25 filesize: 10.17 M page_count: 2 document date: 2024-08-13

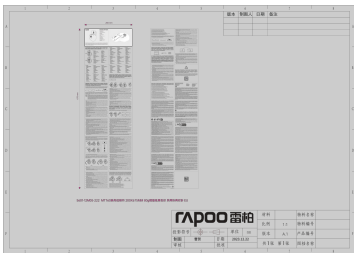


[\[pdf\]](#) User Manual

MT760 EU A 1 5601 12M05 222 QX Download Rapoo MT760LW MT760 L M Manual min rapoo eu
2024 06 |||

...

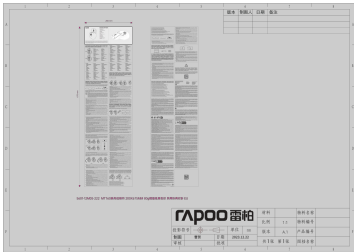
lang: **score:23** filesize: 4.67 M page_count: 1 document date: 2024-06-14



[Rapoo MT760L/MT760M Wireless Mouse User Manual](#)

User manual for the Rapoo MT760L and MT760M wireless optical mice, detailing features, setup, and usage.

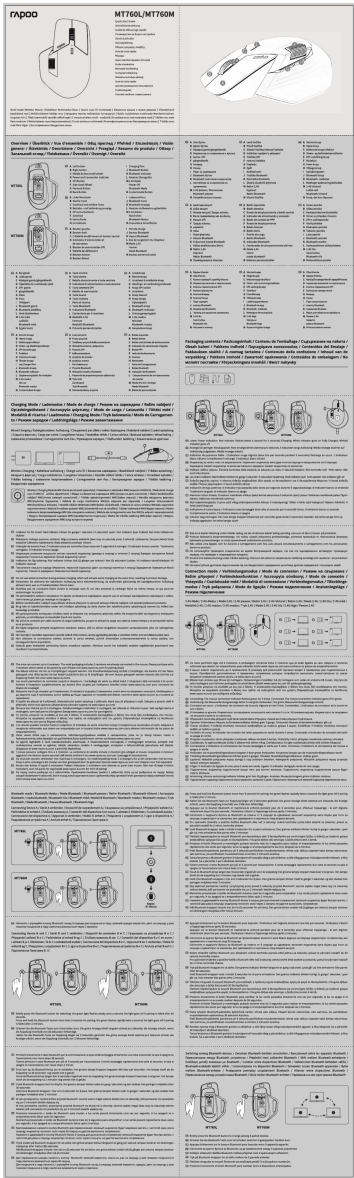
lang: **score:23** filesize: 4.67 M page_count: 1 document date: 2024-03-25



[Rapoo MT760L/MT760M Mouse User Manual](#)

User manual for the Rapoo MT760L and MT760M wireless mice, providing setup, usage, and troubleshooting information.

lang: **score:19** filesize: 4.67 M page_count: 1 document date: 2024-03-25



[Rapoo WM1 Wireless Charging Module Quick Start Guide and Compliance Information](#)

A concise guide to the Rapoo WM1 Wireless Charging Module, including setup, safety instructions, conformity information, and disposal guidelines, presented in an SEO-optimized HTML format.

lang: **score:15** filesize: 14.28 M page_count: 7 document date: 2024-08-13