

Kidzone B0CM5PB88Y

Kidzone Smart Bumper Car User Manual

MODEL: B0CM5PB88Y

Brand: Kidzone

1. INTRODUCTION

This user manual provides essential information for the safe operation, assembly, and maintenance of your Kidzone Smart Bumper Car. Designed for toddlers and kids aged 18 months to 6 years, this electric ride-on toy offers interactive features including app control, LED lights, Bluetooth connectivity, and a 360-degree spin function. Please read this manual thoroughly before use to ensure proper functionality and safety.

What's in the Box

- Ride on Car
- Charger
- Remote Control
- Manual
- DIY Sticker Sheets

2. SAFETY GUIDELINES

Your child's safety is paramount. Always supervise children during operation and ensure all safety features are properly utilized. This product complies with ASTM/CPSIA/CPSC/CA Prop 65/FCC safety regulations.

- **Age and Weight Limit:** Suitable for children aged 18 months to 6 years, with a maximum weight capacity of 66 lbs.
- **Seat Belt:** Always ensure the adjustable 5-point seat belt is securely fastened before operation.
- **Supervision:** Adult supervision is required at all times.

- **Surface:** Use on smooth, flat surfaces. Avoid slopes, stairs, and uneven terrain.
- **Obstacles:** Ensure the play area is clear of obstacles, water, and other hazards.
- **Charging:** The vehicle must be OFF and cannot be operated when charging.



Figure 2.1: Child securely fastened in the bumper car, demonstrating the 5-point harness for safety.

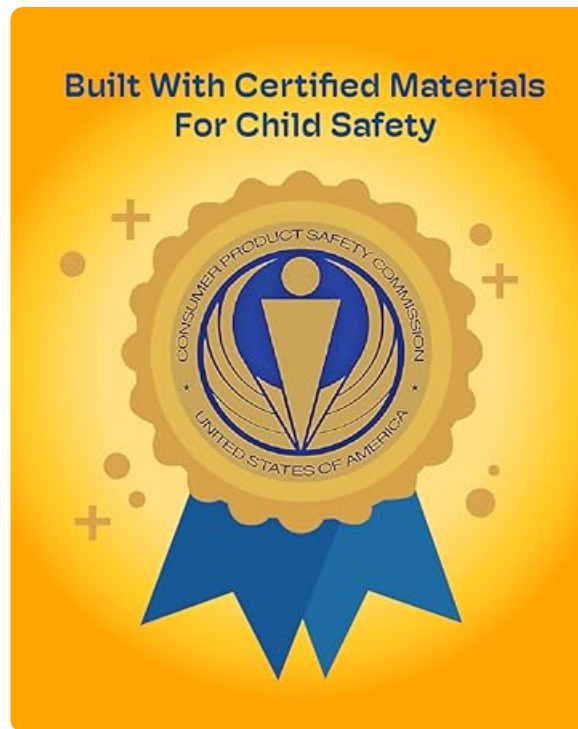


Figure 2.2: The bumper car features a safety flag for increased visibility during play.

3. SETUP AND ASSEMBLY

The Kidzone Smart Bumper Car comes mostly pre-assembled. Follow these steps to prepare it for first use:

1. **Unpack:** Carefully remove all components from the packaging.
2. **Battery Connection:** The battery may come disconnected for shipping safety. Locate the battery compartment (usually under the seat) and connect the battery terminals as per the included quick start guide.
3. **First Charge:** Fully charge the battery for 8-12 hours before initial use. Do not charge for more than 20 hours.
4. **Attach Flag:** Insert the racing flag into its designated slot on the rear of the bumper car.
5. **Apply Stickers:** Personalize your bumper car using the provided DIY sticker sheets.

Make it Your Own!

Comes with 2 sheets of letter and 1 sheet of number stickers



Figure 3.1: Customize your bumper car with the included DIY stickers, featuring numbers, letters, and fun designs.

4. OPERATING INSTRUCTIONS

Control Panel Overview

The main control panel is located within the seating area. It allows for power control, mode selection, speed adjustment, and light customization.

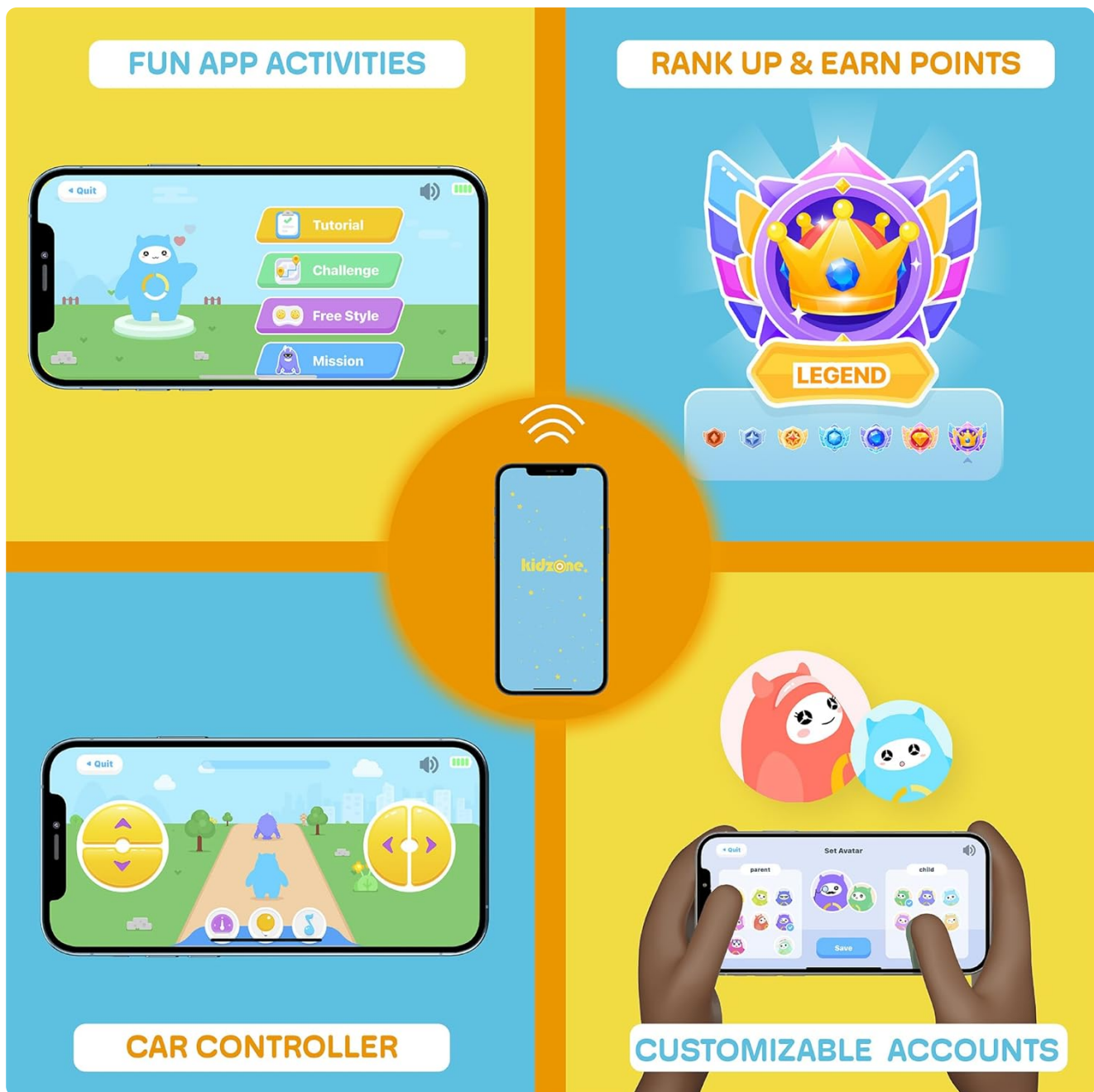


Figure 4.1: The intuitive control panel for easy operation by children or parents.

- **Power Button:** Press to turn the bumper car ON/OFF.
- **Battery Indicator:** Displays current battery level.
- **Mode Selector:** Toggle between Joystick (child-driven), Remote (parental control), and APP control modes.
- **Speed Settings:** Choose between Slow (0.75 mph) and Fast (1.3 mph) speeds.
- **Light Controls:** Activate and cycle through various multi-colored LED light combinations for both upper and lower light strips.

Driving Modes

The Kidzone Smart Bumper Car offers three distinct driving modes:

1. **Joystick Input Mode:** Children can drive the car independently using the two joysticks located on either side of the seat. Pushing both forward moves the car forward, pulling both back moves it backward, and pushing one forward while pulling the other back enables 360-degree spins.
2. **2.4G Remote Control Mode:** Parents can take full control of the bumper car's direction and speed using the included 2.4G remote control. This is ideal for younger children or for guiding the car in specific areas.

3. **APP Control Mode:** Connect the bumper car to the free Kidzone APP (available on iOS and Android) via Wi-Fi. The app allows control over direction, speed, lights, and music. It also features "Play Mode" with games and rewards for an enhanced interactive experience.



Figure 4.2: The included remote control allows parents to guide the bumper car.

Designed for a wide range of age groups 18 months & up to 6 years old



Figure 4.3: Control the bumper car and access interactive features via the Kidzone mobile application.

Lights and Sound

The bumper car features multi-colored LED lights on both the upper frame and around the base, offering 25 light combinations. It also includes Bluetooth connectivity, allowing you to play music or audio files through the car's speaker for an immersive experience.

Your browser does not support the video tag.

Video 4.1: Official product video demonstrating the Kidzone Smart Bumper Car's features, including app control and movement. This video is provided by the seller, Align Inc.

5. MAINTENANCE

- **Battery Care:** The 12V rechargeable lead-acid battery provides approximately 40 minutes of playtime on a full

charge. Charge the battery at least once a month, even if not operating the vehicle, to maximize battery life. Avoid completely draining the battery.

- **Cleaning:** Wipe the bumper car with a damp cloth. Avoid using harsh chemicals or abrasive cleaners.
- **Storage:** Store the bumper car in a dry, cool place away from direct sunlight and moisture.

6. TROUBLESHOOTING

If you encounter issues with your Kidzone Smart Bumper Car, refer to the following common problems and solutions:

Problem	Possible Cause	Solution
Car does not turn on.	Battery is low or disconnected.	Check battery connection and charge fully.
Car does not move.	Incorrect driving mode selected or remote not paired.	Ensure correct mode (Joystick/Remote/APP) is selected. Re-pair remote if necessary.
Lights are not working.	Light function is turned off.	Press the light control buttons on the panel to activate.
App control not connecting.	Wi-Fi issue or app not properly synced.	Ensure Wi-Fi is enabled on your device. Restart app and bumper car.

For further assistance, please refer to the full user manual or contact Kidzone customer support.

7. PRODUCT SPECIFICATIONS

Feature	Detail
Product Dimensions	22.4 x 22.4 x 20.3 inches
Item Weight	12.4 pounds
Manufacturer Recommended Age	18 months - 6 years
Weight Capacity	66 lbs
Motors	Two 15W motors
Battery	12V rechargeable lead-acid
Playtime per Charge	Approximately 40 minutes
Charging Time	8-12 hours (max 20 hours)


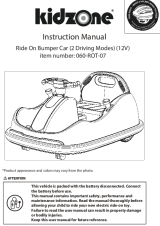

Feature	Detail
Driving Speeds	0.75 - 1.3 mph
Safety Features	Adjustable 5-point seat belts, anti-flat tires, cushioned rubber bumper, slow start
Connectivity	Wi-Fi (for APP control), Bluetooth

8. WARRANTY AND SUPPORT

For warranty information, product support, or to purchase replacement parts, please contact Kidzone customer service directly. Refer to the original packaging or the official Kidzone website for contact details.

A detailed User Manual (PDF) is available for download: [Download User Manual](#)

Related Documents - B0CM5PB88Y

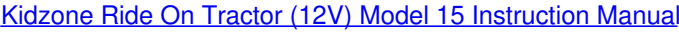
 <p>Kidzone Instruction Manual RIDE ON BUMPER CAR 360 ROTATION (12V) Item number: 060-ROT-09D2</p>	<p>Kidzone Ride On Bumper Car 360 Rotation (12V) Instruction Manual</p> <p>Comprehensive instruction manual for the Kidzone Ride On Bumper Car 360 Rotation (12V). Covers safety guidelines, product specifications, parts identification, operating instructions, remote control usage, charging, maintenance, troubleshooting, and warranty information.</p>
 <p>Kidzone Instruction Manual Ride On Bumper Car (2 Driving Modes) (12V) Item number: 060-ROT-07</p>	<p>Kidzone Ride On Bumper Car (12V) Instruction Manual</p> <p>This manual provides essential safety, performance, and maintenance information for the Kidzone Ride On Bumper Car (2 Driving Modes) (12V). It covers assembly, operation, troubleshooting, and warranty details for model 060-ROT-07.</p>
 <p>Kidzone Instruction Manual Ride On Bumper Car 360 Rotation (6V) Item number: 060-ROT-06</p>	<p>Kidzone Ride-on Bumper Car 360 Rotation (6V) Instruction Manual</p> <p>Comprehensive instruction manual for the Kidzone 6V Ride-on Bumper Car 360 Rotation, covering safety, operation, charging, maintenance, and troubleshooting. Learn how to safely assemble and use this electric ride-on toy.</p>



Official instruction manual for the Kidzone 060-ROT-10 12V Ride-on SUV. Contains essential safety, assembly, operation, and maintenance guidelines for this electric toy vehicle.



Comprehensive instruction manual for the KidZone Ride On Bumper Car (2 Driving Modes) (12V), item number 060-ROT-07. Includes safety instructions, assembly guide, user operation, charging, care, maintenance, troubleshooting, FCC information, and warranty details.



Comprehensive instruction manual for the Kidzone Ride On Tractor (12V) Model 15. Covers safety, assembly, operation, charging, maintenance, and troubleshooting for item numbers 060-ROT-15 and 060-ROT-15V2.