

## Kidzone B0CM5MMXRX

# Kidzone Smart Bumper Car Instruction Manual

Model: B0CM5MMXRX

## INTRODUCTION

This manual provides essential information for the safe and proper operation of your Kidzone Smart Bumper Car. Designed for toddlers and children aged 1.5 to 6 years old, this 12V electric ride-on toy features 2-speed settings, remote control, APP control, LED lights, Bluetooth connectivity, and a 360-degree spin function. Please read all instructions carefully before assembly and use.

## WHAT'S IN THE BOX

- Ride on Car
- Charger
- Remote Control
- Manual

## SAFETY INFORMATION

The Kidzone Smart Bumper Car is constructed from durable and non-toxic plastic, complying with ASTM/CPSIA/CPSC/CA Prop 65/FCC safety regulations. It includes an adjustable 5-point seat belt, anti-flat tires, and a cushioned rubber bumper to minimize impact. A slow start safety feature ensures smooth and controlled acceleration.

**WARNING:** This product can expose you to chemicals which are known to the State of California to cause cancer and birth defects or other reproductive harm. For more information go to [www.P65Warnings.ca.gov](http://www.P65Warnings.ca.gov).

**CAUTION:** The vehicle must be OFF and cannot be operated when charging. Fully charge the battery for 8-12 hours, cannot more than 20 hours. Damage to the battery may occur if it is completely drained. Charge the battery at least once a month even if not operating the vehicle to maximize the battery life.

## SETUP AND ASSEMBLY

Before first use, some assembly is required. Ensure all components are present and undamaged. The battery will come detached and needs to be connected. The backrest also needs to be securely attached.

### Battery Connection

Locate the battery compartment, usually under the seat. Connect the battery terminals as instructed. You will need a Phillips head screwdriver to access the battery compartment.



Image: Kidzone Smart Bumper Car in white, highlighting the 5-point harness and control panel. This image shows the overall design and key safety features.

### Backrest Attachment

The backrest needs to be popped into place. Be mindful of the wire connection for the lights on one side. Ensure the wire is pushed through the designated hole to prevent obstruction and allow the backrest to close completely.

### Remote Control Battery Installation

The remote control requires two AAA batteries (not included). Use a small Phillips head screwdriver to open the battery compartment on the back of the remote and insert the batteries.

## CHARGING THE BATTERY

Before initial use, fully charge the 12V rechargeable battery for 8-12 hours. Do not charge for more than 20 hours. Plug the charger into the designated port on the control panel. The vehicle must be OFF during charging. Charge the battery at least once a month, even if not in use, to maximize battery life.

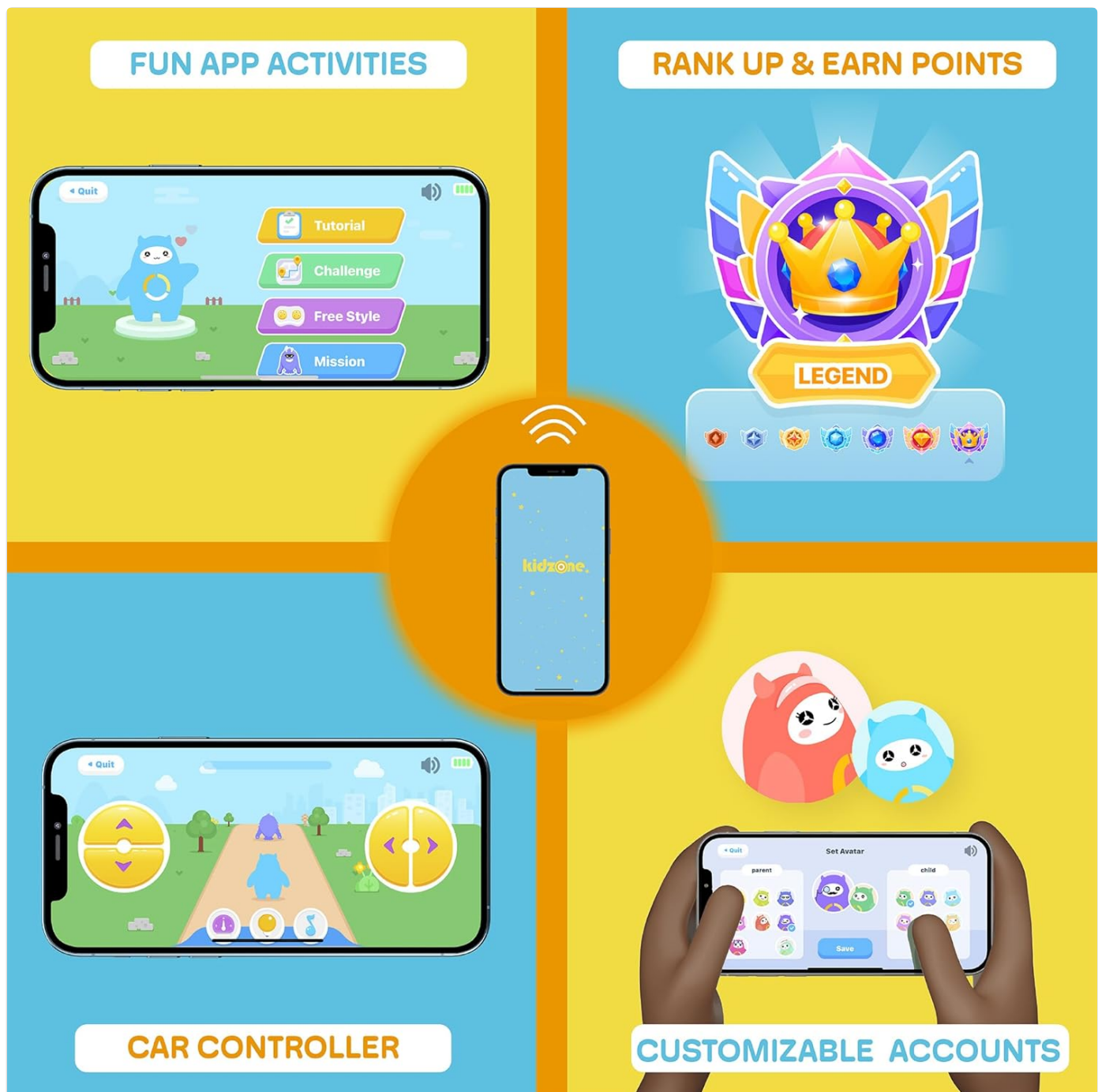


Image: Close-up of the control panel on the Kidzone Smart Bumper Car, displaying the power button, speed settings (fast/slow), light controls (upper/lower), and battery level indicator. The charging port is also visible.

## OPERATING INSTRUCTIONS

The bumper car offers three driving modes: joystick input, 2.4G remote control, and APP control. It features multi-colored LED lights and Bluetooth connectivity for music.

### Power On/Off

Press the red power button on the control panel to turn the car on or off. A sound will indicate power status.

### Driving Modes

- **Joystick Input Mode:** For children to drive independently. Use the two joysticks to control direction and 360-degree spins.
- **2.4G Remote Control Mode:** For parental control. Use the provided remote to steer, move forward/backward, and adjust speed. The 'S' button on the remote adjusts speed, and 'P' is an emergency brake.
- **APP Control Mode:** Connect the car via Wi-Fi to the free Kidzone APP (iOS/Android). Control direction, speed, lights, and music through the app. The app also includes "Play Mode" games.

## FUN APP ACTIVITIES



## RANK UP & EARN POINTS



## CAR CONTROLLER



## CUSTOMIZABLE ACCOUNTS

Image: Close-up of the control panel on the Kidzone Smart Bumper Car, displaying the power button, speed settings (fast/slow), light controls (upper/lower), and battery level indicator. This panel allows selection of driving modes and light settings.

# Join the fun!

Includes parental controller



Image: A child seated in a Kidzone Smart Bumper Car, while a parent holds the remote control, demonstrating the parental control feature.

## Speed Settings

Select between fast (1.3 mph) and slow (0.75 mph) speeds using the buttons on the control panel or via the remote/app.

## LED Lights and Bluetooth

The bumper car features multi-colored LED lights on the upper and lower sections. These can be controlled via the panel or app. Bluetooth connectivity allows playing music or audio files from a connected device.

# Designed for a wide range of age groups 18 months & up to 6 years old

Model Age

03

Height

40"

Weight

38 lbs.



weight  
capacity

66 LBS



Image: Kidzone Smart Bumper Car with various DIY stickers (letters, numbers, ice cream) applied, illustrating the customization feature for children.

## MAINTENANCE

- Regularly inspect the car for any loose parts or damage.
- Clean the car with a damp cloth. Avoid harsh chemicals.
- Ensure the battery is charged at least once a month to prolong its lifespan.
- Store the car in a dry place away from direct sunlight when not in use.

## TROUBLESHOOTING

If the bumper car is not operating correctly, check the following:

- **Car not turning on:** Ensure the battery is properly connected and fully charged.
- **Remote control not working:** Check if the remote has fresh AAA batteries and is correctly paired with the car.
- **Car not moving:** Verify that the correct driving mode (joystick or remote) is selected on the control panel. Ensure no obstructions are blocking the wheels.

- **Reduced performance:** This may indicate a low battery charge. Recharge the battery for the recommended duration.

## SPECIFICATIONS

Product Dimensions	22.4 x 22.4 x 20.3 inches
Item Weight	12.4 pounds
Manufacturer Recommended Age	18 months - 6 years
Batteries	1 Nonstandard Battery required (12V rechargeable)
Maximum Weight Capacity	66 lbs
Motor Power	Two 15W motors
Speed Settings	0.75 - 1.3 mph

## WARRANTY AND SUPPORT

For warranty information or customer support, please refer to the documentation included with your product or contact Kidzone customer service directly. Keep your purchase receipt for any warranty claims.