

Kidzone B0CM5L6BD1

Kidzone Smart Bumper Car Instruction Manual

MODEL: B0CM5L6BD1

1. Introduction and Safety Guidelines

Welcome to the Kidzone Smart Bumper Car experience! This manual provides essential information for the safe assembly, operation, and maintenance of your new electric ride-on toy. Please read all instructions carefully before use and retain this manual for future reference.

Important Safety Information:

- **Age Range:** Suitable for children aged 18 months to 6 years.
- **Weight Capacity:** Maximum weight capacity is 66 lbs (30 kg).
- **Adult Supervision:** Always ensure an adult supervises children during operation.
- **Safety Harness:** Always use the adjustable 5-point safety harness.
- **Operating Environment:** Use on flat, dry surfaces. Avoid slopes, uneven terrain, water, or busy streets.
- **Charging:** The vehicle must be OFF and cannot be operated when charging. Fully charge the battery for 8-12 hours, but not more than 20 hours. Charge the battery at least once a month even if not operating the vehicle to maximize battery life.
- **Material Safety:** Made from durable and non-toxic plastic, complying with ASTM/CPSIA/CPSC/CA Prop 65/FCC safety regulations.



Figure 1: The Kidzone Smart Bumper Car in red, showcasing its key features and a child enjoying the ride.

2. What's in the Box

Upon opening your package, please ensure all the following components are present:

- 1 x Kidzone Smart Bumper Car
- 1 x Charger
- 1 x Remote Control
- 1 x Instruction Manual (this document)
- DIY Sticker Sheets
- Racing Flag

3. Setup and Assembly

Follow these steps to assemble your Kidzone Smart Bumper Car:

1. **Battery Connection:** The bumper car's battery will be detached for shipping. Locate the battery

compartment (usually under the seat). Use a Phillips head screwdriver to open the compartment, connect the battery terminals, and secure the compartment cover.

2. **Backrest Attachment:** Carefully attach the backrest to the main body of the car. Ensure any internal wiring for lights is properly connected and tucked away to prevent pinching when securing the backrest.
3. **Remote Control Batteries:** The remote control requires 2 AAA batteries (not included). Use a small Phillips head screwdriver to open the battery compartment on the back of the remote, insert the batteries, and secure the cover.
4. **Attach Racing Flag:** Insert the racing flag into its designated slot on the rear of the bumper car.
5. **Initial Charge:** Fully charge the bumper car for 8-12 hours before its first use. Refer to the 'Maintenance' section for detailed charging instructions.



Figure 2: A child secured in the bumper car, illustrating the importance of the safety harness during setup.

Setup Video:

Your browser does not support the video tag.

Video 1: This video demonstrates the assembly process, including battery connection and backrest attachment, for the Kidzone Smart Bumper Car.

4. Operating Instructions

Control Panel Overview:

The control panel, located inside the bumper car, allows you to manage various functions:

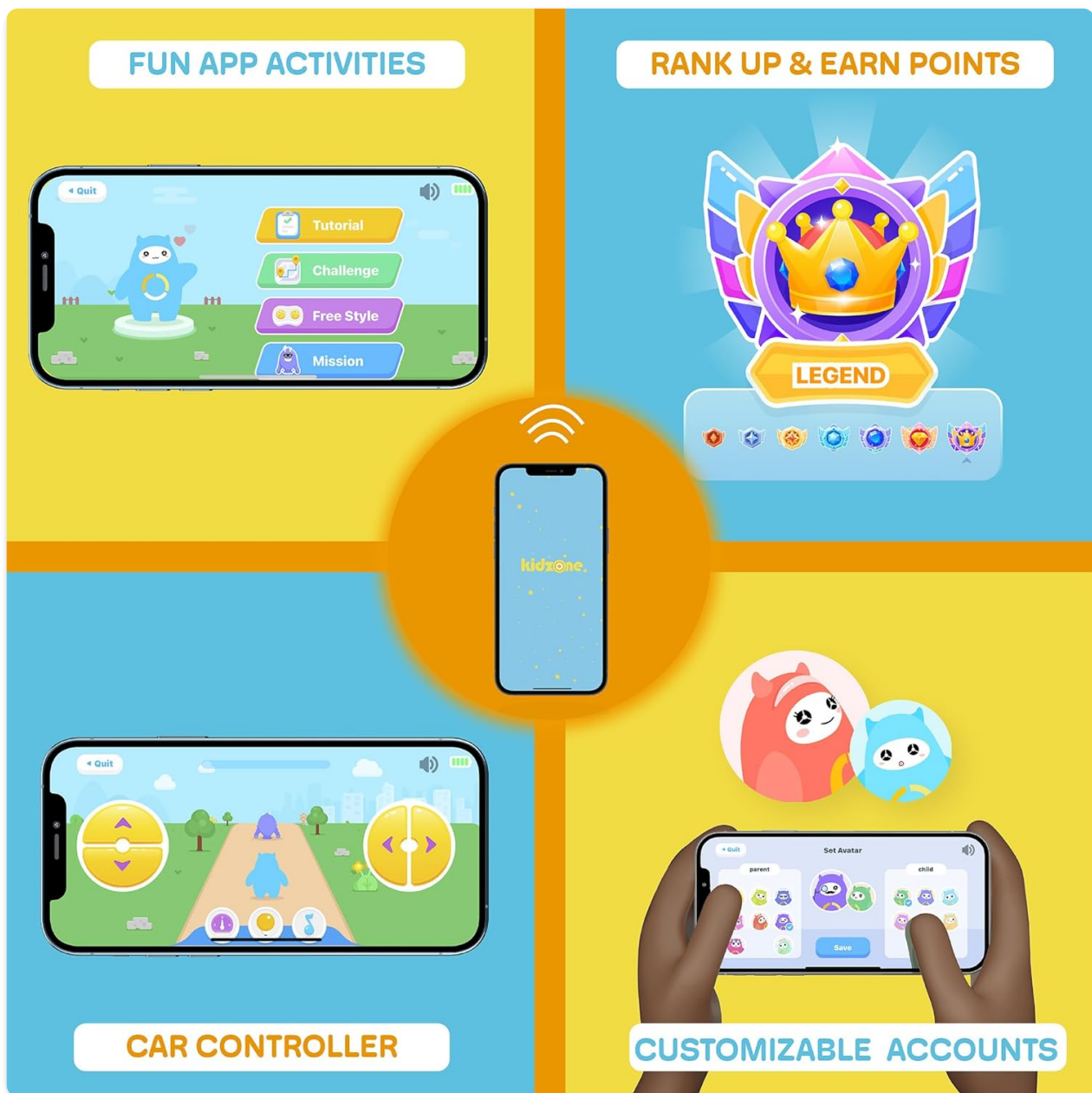


Figure 3: Detailed view of the bumper car's control panel.

- **Power Button:** Press to turn the car ON/OFF.
- **Mode Selector (Remote/Joystick):** Switch between child-controlled joystick mode and parent-controlled remote mode.
- **Speed Selection (Fast/Slow):** Adjust the driving speed.
- **Light Controls:** Cycle through various multi-colored light patterns for both upper and lower LED strips.
- **Battery Indicator:** Displays the current battery charge level.
- **Bluetooth Button:** Activates Bluetooth for music playback.
- **Charging Port:** Connect the charger here.

Driving Modes:

1. Joystick Input Mode (Child Control):

For children capable of independent control. Push both joysticks forward to move forward, pull both back to move backward. Push one forward and one back to spin. Ensure the mode selector is set to 'Joystick'.

Make it Your Own!

Comes with 2 sheets of letter and 1 sheet of number stickers



Figure 4: Child operating the bumper car with joysticks.

2. 2.4G Remote Control Mode (Parental Control):

For younger children or when parental supervision is desired. Ensure the mode selector is set to 'Remote'. Use the remote control's directional buttons to steer the bumper car. The remote also features a 'P' button for emergency braking and an 'S' button for speed adjustment.

**Designed for a wide range of age groups
18 months & up to 6 years old**

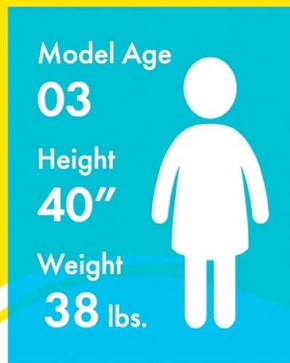


Figure 5: Parent using the remote control.

3. APP Control Mode:

Download the free Kidzone APP on iOS or Android. Connect the app via Wi-Fi to control the direction, speed, lights, and music. The app also includes 'Play Mode' with games and rewards for an enhanced interactive experience.



Figure 6: Kidzone mobile application interface for smart control.

Light Settings and Customization:

- **Multi-Colored LED Lights:** Use the light control buttons on the panel to cycle through various colors and flashing patterns on the upper and lower LED strips.
- **DIY Stickers:** Personalize your bumper car with the included DIY sticker sheets (letters, numbers, and fun designs).

Join the fun! 
Includes parental controller



Figure 7: Bumper car with illuminated multi-colored LED lights.



Figure 8: DIY sticker sheets for personalizing the bumper car.

5. Maintenance

- **Charging:** Connect the provided charger to the charging port on the control panel. A full charge takes 8-12 hours and provides approximately 40 minutes of playtime. Do not charge for more than 20 hours. Charge the battery at least once a month to prolong its lifespan.
- **Cleaning:** Wipe the bumper car with a damp cloth. Avoid using harsh chemicals or abrasive cleaners.
- **Storage:** Store the bumper car in a dry, cool place away from direct sunlight when not in use.

6. Troubleshooting

- **Car Not Turning On:** Check if the battery is properly connected and fully charged. Ensure the power button is pressed.
- **Car Not Moving:** Verify that the correct driving mode (Remote or Joystick) is selected on the control panel. If using the remote, ensure its batteries are fresh.
- **Lights Not Working:** Check the light control buttons on the panel. Ensure the battery has sufficient charge.

- **Remote Not Responding:** Ensure the remote control has fresh AAA batteries and is properly paired with the bumper car.

7. Specifications

Feature	Detail
Model	Kidzone Smart Bumper Car (B0CM5L6BD1)
Product Dimensions	22.4"D x 22.4"W x 20.3"H
Item Weight	12.4 pounds
Recommended Age	18 months - 6 years
Weight Capacity	66 lbs (30 kg)
Motors	Two 15W motors
Battery	12V Rechargeable Lead-acid Battery
Charge Time	8-12 hours
Playtime per Charge	Approximately 40 minutes
Speed Modes	Fast (1.3 mph) / Slow (0.75 mph)
Control Options	Joystick, 2.4G Remote Control, Kidzone APP
Safety Features	Adjustable 5-point seat belt, Anti-flat tires, Cushioned rubber bumper, Slow start safety feature

8. Warranty and Support

For warranty information, technical support, or any questions regarding your Kidzone Smart Bumper Car, please refer to the contact details provided on the product packaging or visit the official Kidzone website. Keep your purchase receipt as proof of purchase for warranty claims.