



[Manuals.plus](#) /

› [Alacritiy](#) /

› Alacritiy MJ-2020R 2D Industrial Barcode Scanner User Manual

Alacritiy MJ-2020R

Alacritiy MJ-2020R 2D Industrial Barcode Scanner User Manual

Model: MJ-2020R | Brand: Alacritiy

1. INTRODUCTION

This manual provides detailed instructions for the setup, operation, and maintenance of your Alacritiy MJ-2020R 2D Industrial Barcode Scanner. Please read this manual thoroughly before using the device to ensure proper functionality and to prevent damage.



The Alacrity MJ-2020R 2D Industrial Barcode Scanner, shown with its wireless charging stand.

2. PRODUCT FEATURES

- **High-Resolution Industrial Scan Engine:** Equipped with a 1-megapixel optical lens for swift and accurate reading of various printed barcodes, including those on labels, mobile phones, and computer screens. Effective even with partially damaged, dirty, or poorly printed codes.
- **Exceptional Signal Range:** 433MHz RF wireless transmission up to 1968 feet (600 meters) in unobstructed environments and 656 feet (200 meters) with obstacles, suitable for large warehouses.
- **Wireless Charging:** Convenient wireless charging by placing the scanner on its stand.
- **Wide Compatibility:** No software installation required. Compatible with Windows, Mac OS, iOS, Android, and various software like QuickBooks, Word, and Excel.
- **Industrial-Grade Durability:** Robust ABS material provides shockproof capabilities, withstanding drops from 8 ft./2.4 m onto concrete. Integrated housing ensures dustproof functionality.
- **Versatile Configuration Options:** Supports hands-free intelligent sensor mode or trigger scan mode, adjustable vibration/buzzer settings, data storage/instant upload modes, multiple keyboard languages, and

customizable prefix/suffix additions (including date and time).

Technical Support

NEED SUPPORT? Find Us On Amazon

→Go to your account page. →Orders. →Get help with an order.→Select an issue. →Send e-mail.

Download Manual



Send an Email



Have a Chat



Illustration of the Alacrity scanner's long-distance signal transmission capability, reaching up to 1968 feet in open air.

3. SETUP

3.1 Package Contents

Before proceeding with setup, ensure all components are present:

- Alacrity MJ-2020R Barcode Scanner
- Wireless Charging Stand
- USB Cable
- User Manual

2 Wireless Connection Ways



Wireless Dongle Built In Stand



The Alacrity MJ-2020R barcode scanner, its wireless charging stand, USB cable, and user manual.

3.2 Connecting the Scanner

The scanner supports two wireless connection methods: Bluetooth and 433MHz wireless via the charging stand's dongle.

Long Distance Signal Transmission

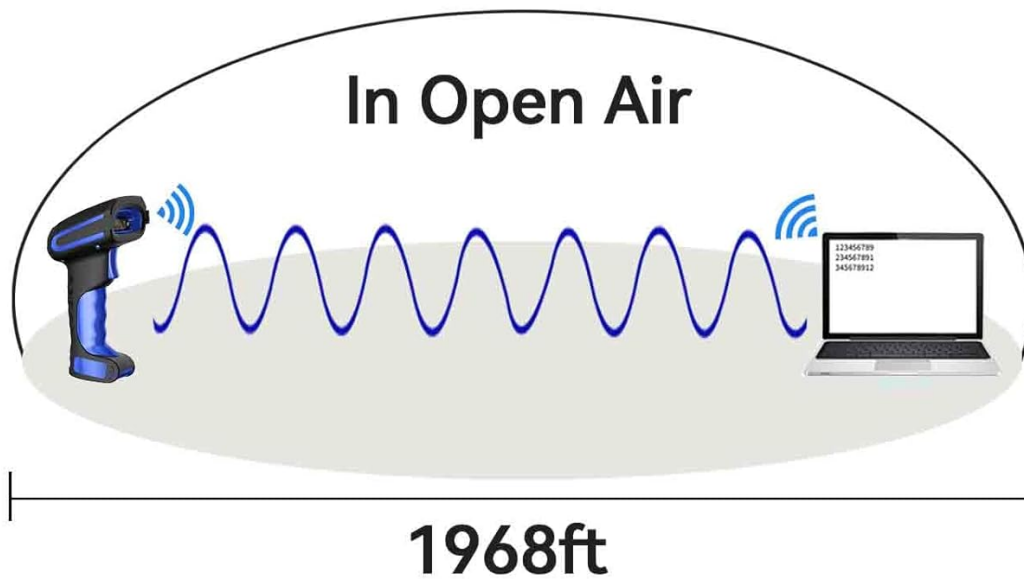
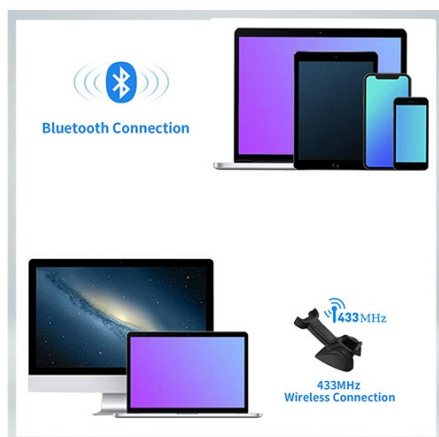


Diagram illustrating the two wireless connection methods: Bluetooth for short-range and 433MHz wireless dongle for long-range. For Bluetooth connection, pair the scanner with your device. For 433MHz wireless, connect the stand's USB cable to your computer. The scanner will automatically connect to the dongle in the stand.



Wide Compatibility

Short-Range Bluetooth Connection: Works with Android, iOS, smartphones, tablets, and laptops.

Long-Range 433MHz Wireless Connection: Supports Windows, macOS, and Linux, compatible with desktop computers and laptops.

Note: Not compatible with Square systems, as they only support specific brand scanners. For other POS systems, please refer to their website for a list of compatible devices.

The scanner offers wide compatibility with various operating systems and devices via Bluetooth and 433MHz wireless.

3.3 Charging the Scanner

Place the scanner on the wireless charging stand to charge. The stand also acts as a receiver for the 433MHz wireless connection.

Drop Down Power UP

Built-in Wireless Charging



The Alacrity barcode scanner placed on its wireless charging stand, indicating charging status.



Multifunctional Scanner Stand with Wireless Charging

Drop down and power up

Simply place your scanner on the stand to charge wirelessly, eliminating the hassle of wired connections.

Dongle Integration

The scanner transmits data wirelessly to the built-in dongle (up to 250 meters in open space), which then seamlessly relays the data to your computer via a wired connection.

The multifunctional stand provides wireless charging and integrates the 433MHz wireless dongle.

3.4 Adjusting the Stand Angle

The scanner stand's angle can be adjusted for ergonomic use. Refer to the video below for instructions.


Your browser does not support the video tag.

Video demonstrating how to adjust the angle of the MJ-2020R scanner stand for optimal positioning.

4. OPERATING INSTRUCTIONS

4.1 Scanning Barcodes

The Alacrity MJ-2020R scanner can decode most 1D and 2D printed or digital codes, even if they are damaged, blurred, or on colored backgrounds.



Advanced Decoding Capability

This scanner decodes most 1D and 2D printed or digital codes, whether on paper or screen:

2D: QR, Micro QR, Data Matrix, PDF417, Micro PDF417, Aztec, Maxicode
1D: UPC/EAN, Code 128/EAN128, GS1-128, GS1 Databar, GS1 Composite, ISBT-128, Standard 2 of 5, Matrix 2 of 5, Code 39, Code 32, Code 93, Code 11, Codabar, PLESSEY, MSI, ITF-14

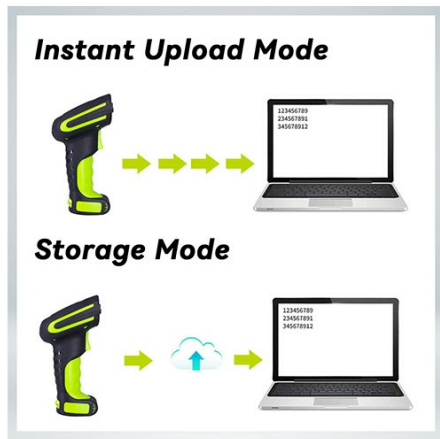
Note: Scanning distance may vary based on code size. Adjust for best results.

Illustration of the scanner's advanced decoding capabilities for various 1D and 2D barcode types, including damaged, blurred, and colored codes.

4.2 Data Uploading Modes

The scanner offers two primary data uploading modes:

- **Instant Upload Mode:** Scanned codes are transmitted to your connected device in real-time.
- **Storage Mode:** When out of wireless range, the scanner stores codes in its internal memory. Once reconnected, all stored data can be uploaded. The built-in memory can hold over 50,000 barcodes.



Two Data Uploading Modes

Instant Mode: Scan and upload codes to your device in real-time.
 Storage Mode: When out of wireless range, the scanner stores codes in memory. Once reconnected, you can upload all stored data. The built-in memory holds over 50,000 barcodes.

Diagram explaining the two data uploading modes: Instant Upload and Storage Mode.

4.3 Customized Settings

The scanner can be configured with various settings to suit your operational needs:

- Buzzer On/Off
- Volume (high/medium/low)
- Vibration On/Off
- Handsfree Intelligent Sensor Mode / Trigger Scan Mode
- Data Storage Mode / Instant Upload Mode
- Multiple Keyboard Languages
- Adding / Hiding Prefix / Suffix (including date and time)



Versatile Customized Configuration Options

Buzzer On/Off.
 Volume high/medium/low.
 Vibration On/Off.
 Handsfree Intelligent sensor mode/Trigger scan mode.
 Data Storage Mode/Instant Upload Mode.
 Multiple keyboard languages.
 Adding/hiding prefix/suffix(including date and time).
 etc.

Examples of customizable settings for the scanner, such as adding date and time prefixes/suffixes to scanned data.

4.4 Multilingual Keyboard Support

The scanner supports multiple keyboard layouts. Ensure the scanner's language setting matches your computer's keyboard layout for accurate output. The default language is English.



Multilingual Keyboard Layout Support

The scanner supports multiple keyboard layouts, including English, German, French, Spanish, Italian, Japanese, and more.

Note: For accurate output, ensure the scanner's language matches your computer's keyboard layout. The default is English.

Image showing various country flags, indicating multilingual keyboard layout support for the scanner.

5. MAINTENANCE

To ensure the longevity and optimal performance of your Alacrity MJ-2020R barcode scanner, follow these maintenance guidelines:

- Keep the scanner and charging stand clean. Use a soft, dry cloth to wipe surfaces. Avoid abrasive cleaners or solvents.
- Protect the scanning window from scratches and dirt. Clean it gently with a lint-free cloth.
- Store the scanner in a cool, dry place when not in use.
- Avoid exposing the device to extreme temperatures, humidity, or direct sunlight.
- Do not attempt to disassemble or repair the scanner yourself. Contact technical support for assistance.

6. TROUBLESHOOTING

6.1 Setting Date and Time

If the scanner outputs an incorrect date or time, you can adjust it using a Windows computer. Follow the steps in the video below:

Your browser does not support the video tag.

Video tutorial on how to set the date and time on the Alacrity MJ-2020R barcode scanner using a computer.

6.2 Scanner Fails to Input Data

If the scanner performs a scan but fails to input the code data into the computer, it often indicates a lost wireless connection with the dongle inside the stand. You will typically hear a three-beep sound after scanning in this scenario. Reconnect the scanner with the dongle inside the stand as shown in the video:

Your browser does not support the video tag.

Video explaining common reasons why the scanner might not input data to the computer after scanning and how to resolve connection issues.

6.3 General FAQ

For other common questions, refer to the FAQ section below or contact support.



Q: Is the scanner compatible with Square POS or other POS systems?

A: Unfortunately, no. Square POS only supports barcode scanners from certain brands. For other POS systems, please refer to the respective website to view their list of compatible barcode scanners.

Q: How can I get direct support?

A: please email us at support@alacritydirect.com or by visiting our website.

Frequently Asked Questions regarding scanner compatibility and support, including information on Square POS systems.

7. SPECIFICATIONS

Feature	Detail
Model	MJ-2020R
Brand	Alacrity
Connectivity Technology	Bluetooth, 433MHz Wireless
Compatible Devices	Desktop, Laptop, Smartphone
Power Source	Battery Powered (1 Lithium Ion battery included)
Transmission Distance (433MHz)	Up to 1968 feet (600 meters) unobstructed, 656 feet (200 meters) with obstacles
Decoding Capability	1D (UPC/EAN, Code 128/EAN128, GS1-128, GS1 Databar, GS1 Composite, ISBT-128, Standard 2 of 5, Matrix 2 of 5, Code 39, Code 32, Code 93, Code 11, Codabar, PLESSEY, MSI, ITF-14), 2D (QR, Micro QR, Data Matrix, PDF417, Micro PDF417, Aztec, Maxicode)
Durability	Withstands 8 ft./2.4 m drops onto concrete, dustproof housing
Memory	Stores over 50,000 barcodes in storage mode
GTIN	762027975456
ASIN	B0CM3C17NC

8. WARRANTY

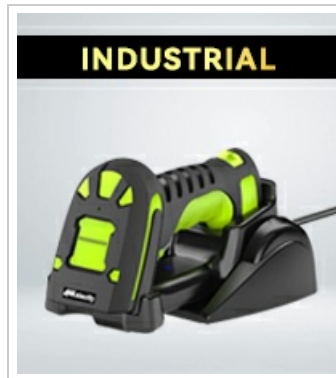
For information regarding the product warranty, please refer to the product packaging or contact Alacrity customer support directly. Warranty terms and conditions may vary.

9. TECHNICAL SUPPORT

If you require further assistance or have questions not covered in this manual, please contact Alacrity technical support through the following channels:

- **Email Support:** support@alacritydirect.com
- **WhatsApp Support:** [Chat via WhatsApp](#)
- **Product Page:** [Alacrity MJ-2020R Product Page](#)

You can also find support by navigating to your Amazon account page, selecting 'Orders', then 'Get help with an order', selecting an issue, and sending an email.



Technical support contact options, including QR codes for manual download, email, and WhatsApp chat.