

## Machenike K500-B94

# Machenike K500-B94 Mechanical Gaming Keyboard User Manual

Model: K500-B94 | Brand: Machenike

## INTRODUCTION

Thank you for choosing the Machenike K500-B94 Mechanical Gaming Keyboard. This manual provides detailed instructions for setting up, operating, maintaining, and troubleshooting your new keyboard. Please read this manual thoroughly before using the product to ensure optimal performance and longevity.



Image: The Machenike K500-B94 mechanical gaming keyboard, showcasing its compact design and red switches.

## SETUP

---

Follow these steps to set up your Machenike K500-B94 keyboard:

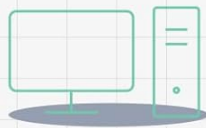
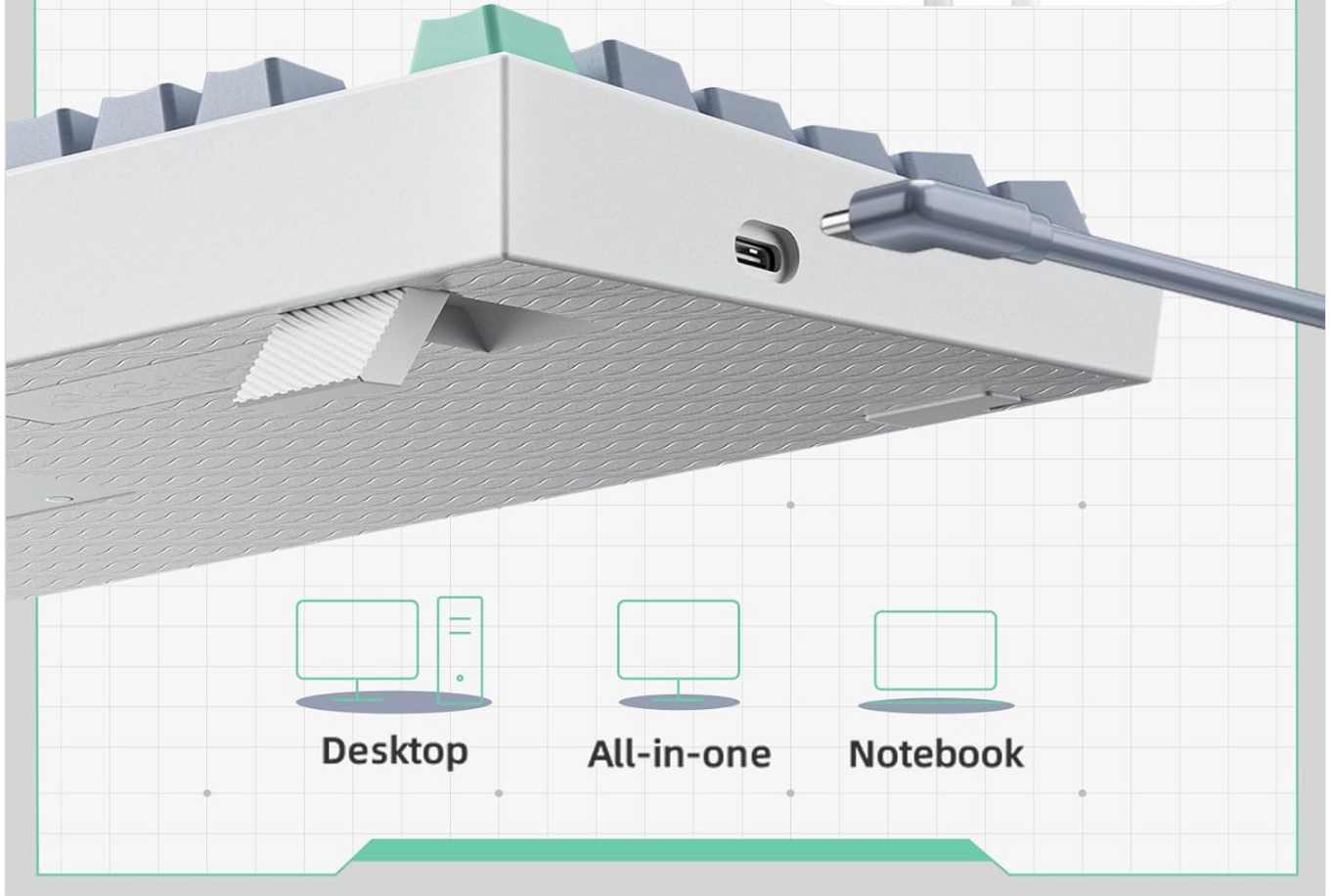
1. **Unpack the Keyboard:** Carefully remove the keyboard and all accessories from the packaging. Ensure all components are present: keyboard, USB Type-C cable, and user manual.
2. **Connect the Cable:** Insert the USB Type-C end of the provided cable into the Type-C port on the keyboard.

# Detachable Type-C Cable

More Portable & Stable



Type-c



Desktop



All-in-one



Notebook

Image: Close-up of the keyboard's Type-C port and the detachable cable, highlighting its portability and stable connection.

3. **Connect to Computer:** Plug the standard USB-A end of the cable into an available USB port on your computer (laptop or desktop).
4. **Driver Installation:** The keyboard is plug-and-play and should be automatically recognized by your operating system (Windows 10 and above). No additional drivers are typically required.
5. **Software Installation (Optional):** For advanced customization of RGB lighting and key functions, download the dedicated software from the official Machenike website.

# Pro Software Customizable

Design your modes and effects



16.8 Million Colors

Customize your own mode

Custom Profile

Image: Screenshot of the Machenike Pro Software interface, showing options for customizing RGB lighting and creating custom profiles.

## FEATURES

- **Mechanical Red Switches:** Equipped with 3-pin hot-swappable red switches, providing a linear and smooth typing experience with a simple key sound and no tactile bump. Ideal for both gaming and typing.



# Hot-Swappable Switch

Easy to install, Plug and Play

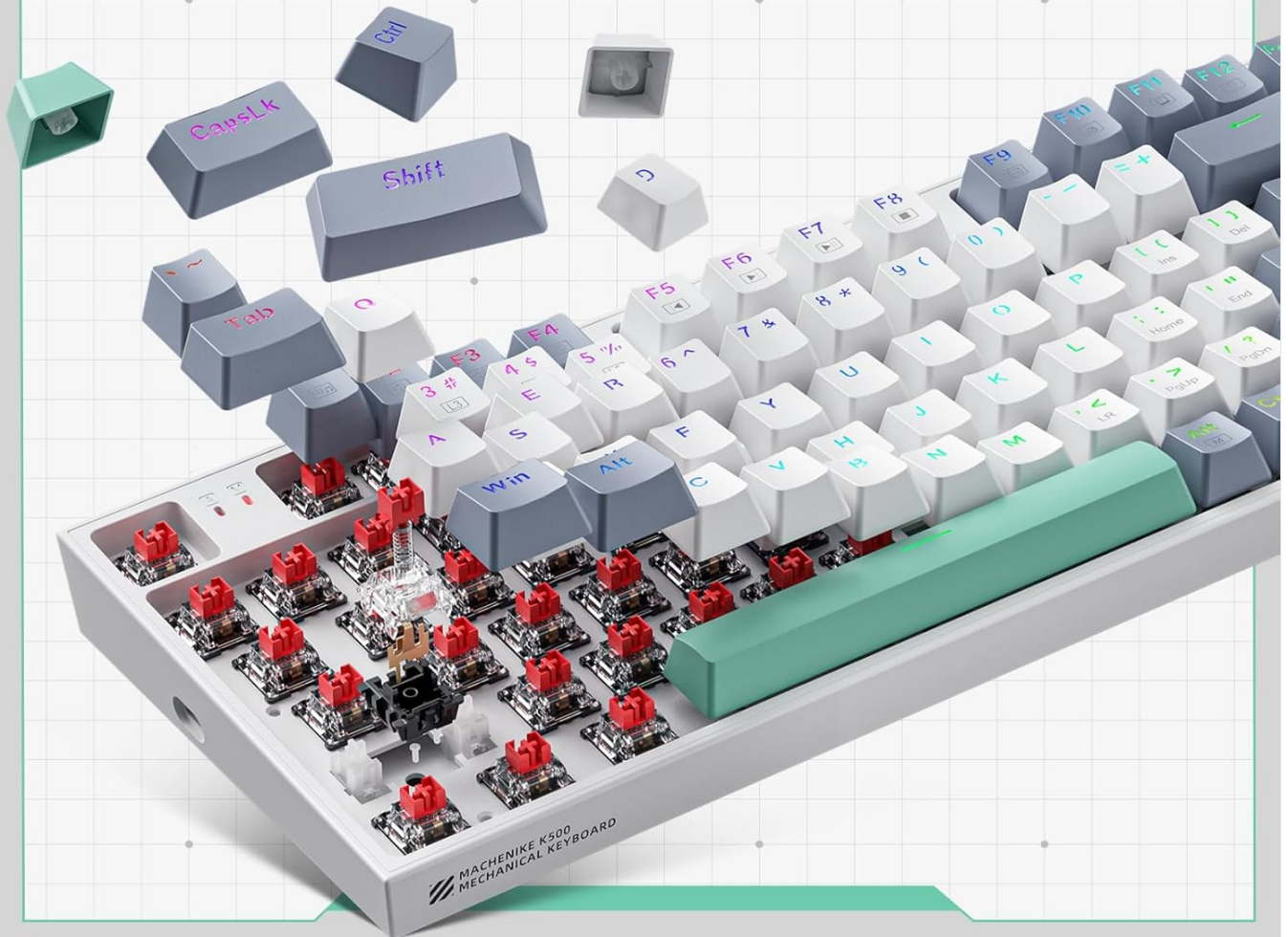


Image: A close-up view of the keyboard's hot-swappable switch sockets, demonstrating the ease of installing and replacing switches.

- **Dynamic RGB Backlight:** Features a dynamic RGB backlight system with 20 different backlight modes and customizable options.
- **Durable PBT Keycaps:** Keycaps are double-shot PBT injection molded, offering high resistance to fading and scratching. The comfortable stepped design (OEM height) and adjustable stands enhance hand comfort during extended use.
- **94-Key Compact Layout:** Innovative and streamlined 94-key layout retains full keyboard functions and number keys while saving 20% desktop space compared to traditional full-size keyboards.

# Compact 90% Keyboard

Designed for comfort and portability in office, travel and gaming

94 Keys



80mm

104 Keys

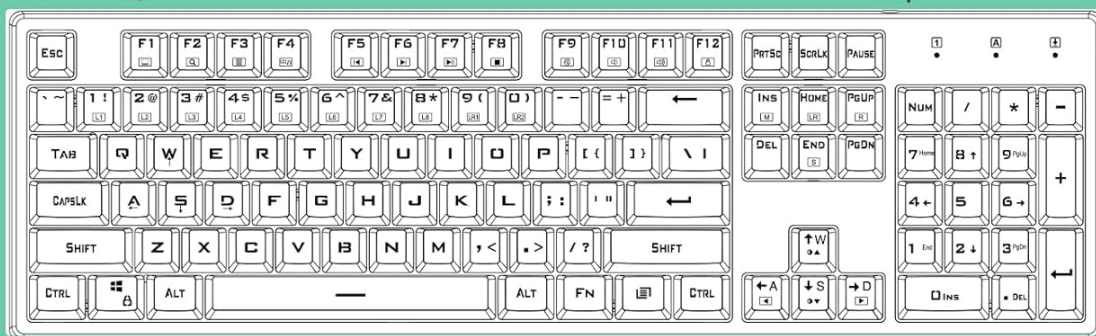


Image: A visual comparison illustrating the compact 94-key layout of the Machenike K500-B94 keyboard next to a standard 104-key layout, highlighting its space-saving design.

- **N-Key Rollover & Anti-Ghosting:** Supports N-key rollover technology, ensuring every key press is registered accurately, which is crucial for gaming and fast typing.
- **High Quality & Durability:** Built with industry-leading keyboard craftsmanship, offering a service life of over 50 million key presses.
- **Detachable Type-C Cable:** Provides a portable and stable connection.


# Machenike K500 Gaming Keyboard




Hot-Swappable



Amazing RGB



90% Layout



Type-C Cable



PBT



PBT Shot Keycaps Anti-Ghosting Keys

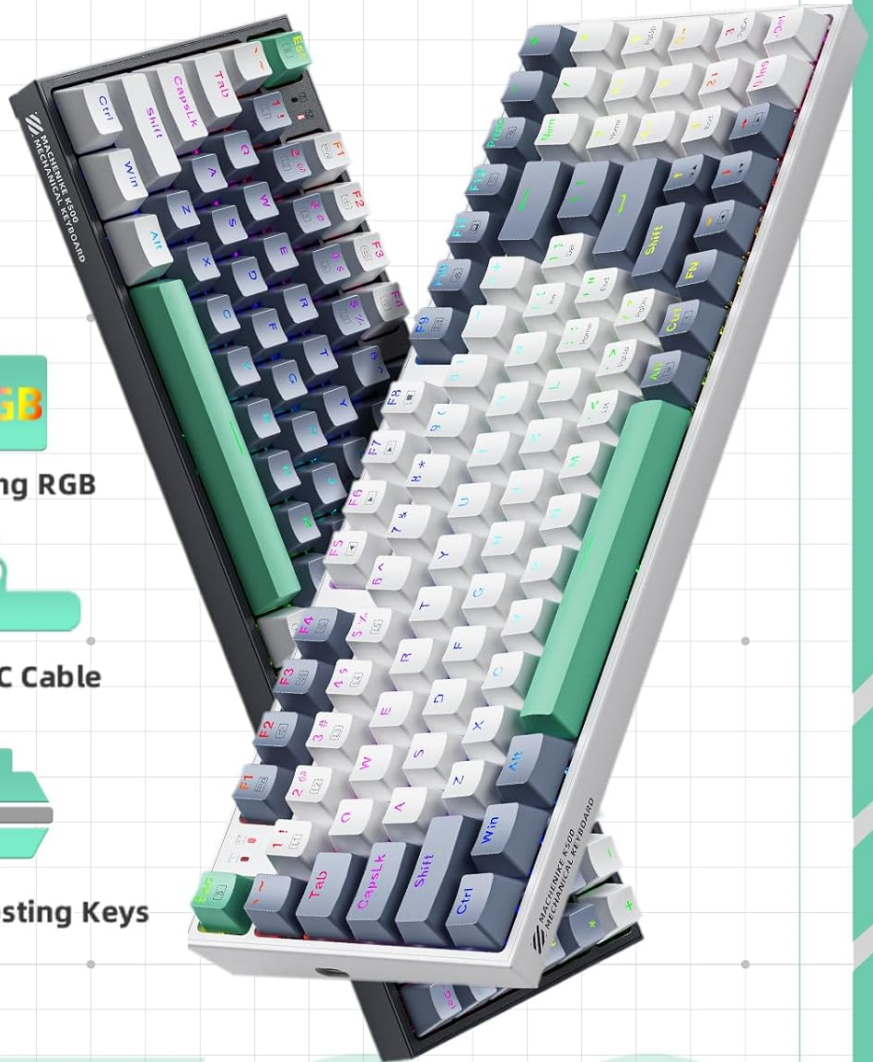


Image: An infographic summarizing the key features of the Machenike K500-B94 keyboard, including hot-swappable switches, RGB lighting, 90% layout, Type-C cable, PBT keycaps, and anti-ghosting keys.

## OPERATING INSTRUCTIONS

### Basic Usage

- **Typing:** Use the keyboard as a standard input device for typing text and commands.
- **Function Keys:** The F1-F12 keys can be accessed directly. Some keys may have secondary functions (e.g., media controls) accessible via the **Fn** key combination. Refer to the keycap legends for specific combinations.

### RGB Backlight Control

The Machenike K500-B94 offers various RGB lighting effects.

- **Changing Modes:** Use specific key combinations (often **Fn** + a designated key, e.g., **Fn** + **Ins**, **Fn** + **Home**, **Fn** + **PgUp**, **Fn** + **Del**, **Fn** + **End**, **Fn** + **PgDn**) to cycle through the 20 pre-set RGB lighting modes.

- **Adjusting Brightness:** Typically, Fn + Up Arrow / Down Arrow keys control backlight brightness.
- **Adjusting Speed/Direction:** Fn + Left Arrow / Right Arrow keys may control the speed or direction of dynamic lighting effects.
- **Customization via Software:** For full control over individual key lighting, custom effects, and profile management, use the Machenike Pro Software.

## Hot-Swappable Switches

The hot-swappable design allows you to change switches without soldering.

1. **Removing a Switch:** Use the provided switch puller tool to gently grip the top and bottom of the switch and pull it straight up.
2. **Installing a Switch:** Align the pins of the new switch with the holes on the PCB. Gently push the switch straight down until it clicks into place. Ensure the pins are not bent.

## MAINTENANCE

Proper maintenance ensures the longevity and performance of your keyboard.

- **Regular Cleaning:** Use a soft brush or compressed air to remove dust and debris from between the keycaps.
- **Keycap Cleaning:** For deeper cleaning, remove the keycaps using a keycap puller. Wipe them with a damp cloth and mild soap solution, then dry thoroughly before reattaching.
- **Surface Cleaning:** Wipe the keyboard surface with a soft, slightly damp cloth. Avoid using harsh chemicals or abrasive materials.
- **Avoid Liquid Spills:** Keep liquids away from the keyboard to prevent damage to internal components. In case of a spill, immediately disconnect the keyboard and allow it to dry completely before reconnecting.

## TROUBLESHOOTING

If you encounter issues with your keyboard, refer to the following common problems and solutions:

Problem	Solution
Keyboard not responding.	<ul style="list-style-type: none"><li>• Ensure the USB Type-C cable is securely connected to both the keyboard and the computer.</li><li>• Try plugging the keyboard into a different USB port on your computer.</li><li>• Restart your computer.</li><li>• Test the keyboard on another computer to rule out a system-specific issue.</li></ul>
Specific keys not working.	<ul style="list-style-type: none"><li>• Check if the keycap is properly seated. Remove and re-attach it.</li><li>• Due to the hot-swappable design, you can try removing the switch for the non-functional key and re-inserting it, ensuring the pins are straight and properly aligned.</li><li>• If available, try swapping the problematic switch with a known working switch from another key to determine if the issue is with the switch or the keyboard's PCB.</li><li>• Clean any debris around the affected switch.</li></ul>



Problem	Solution
RGB lighting not working or behaving incorrectly.	<ul style="list-style-type: none"><li>Ensure the keyboard is properly connected and powered.</li><li>Cycle through RGB modes using the keyboard shortcuts (e.g., Fn + Ins).</li><li>If using the software, ensure it is running and the settings are correctly applied. Try resetting the lighting profile in the software.</li><li>Reinstall the keyboard software if the issue persists.</li></ul>
Keyboard input lag or ghosting.	<ul style="list-style-type: none"><li>Ensure no background applications are consuming excessive system resources.</li><li>Try a different USB port, preferably a direct port on the motherboard for desktops.</li><li>Ensure the cable is not damaged.</li></ul>

## SPECIFICATIONS

Feature	Detail
Brand	Machenike
Model Number	K500-B94
Keyboard Description	Mechanical
Switch Type	Red Switches (Hot-Swappable)
Number of Keys	94
Connectivity Technology	USB-C (Wired)
Backlight	RGB (20 modes, customizable)
Keycap Material	Double-shot PBT
Operating System	Windows 10 (Compatible with Laptop, Desktop)
Product Dimensions	39.6 x 17 x 5.6 cm
Item Weight	870 grams
Special Features	Backlit, Lightweight, Ergonomic Design, Hot-Swappable, Customizable Display Keys

## WARRANTY AND SUPPORT

Machenike products are manufactured to high-quality standards. For warranty information, technical support, or service inquiries, please refer to the warranty card included with your product or visit the official Machenike website. Keep your purchase receipt as proof of purchase.

