

## Manuals+

[Q & A](#) | [Deep Search](#) | [Upload](#)

manuals.plus /

- › [COBIZI](#) /
- › [COBIZI 20' x 40' Heavy Duty Party Tent User Manual](#)

## COBIZI 80-w

# COBIZI 20' x 40' Heavy Duty Party Tent User Manual

Model: 80-w

## 1. INTRODUCTION

---

This manual provides detailed instructions for the assembly, operation, and maintenance of your COBIZI 20' x 40' Heavy Duty Party Tent. Please read all instructions carefully before setup and retain this manual for future reference. This tent is designed for temporary outdoor use, suitable for events such as parties, weddings, or as a temporary shelter.



*Image: The COBIZI 20' x 40' Party Tent configured for a wedding event, showcasing its spacious interior and clear window sidewalls.*

## 2. SAFETY INFORMATION

---

- **Fire Hazard:** This party tent is **NOT FIREPROOF**. Keep all fire sources, including open flames, heaters, and cooking equipment, away from the tent fabric.
- **Weather Conditions:** Do not use the tent in strong winds, heavy rain, or snow. Severe weather can cause structural damage and potential injury. Disassemble the tent if adverse weather conditions are expected.
- **Anchoring:** Always ensure the tent is properly anchored using the provided pegs and wind ropes to prevent uplift or collapse.
- **Assembly:** Assembly requires multiple people. Ensure all connections are secure before use.
- **Site Selection:** Choose a level, clear area free from overhead obstructions (e.g., power lines, tree branches) and sharp objects on the ground.

## 3. PACKAGE CONTENTS

---

Verify that all components are present before beginning assembly. The tent is shipped in multiple boxes. If any parts are missing or damaged, please contact customer service.

- Reinforced Alloy Steel Frame Components (poles, connectors)
- 160g PE Roof Cover (White, UV protected, waterproof)
- 6 Removable Sidewalls with PVC Church Windows
- 2 Zipper Doors with Windows
- Ground Bars
- Pegs and Wind Ropes
- Elastic Ball Bungees

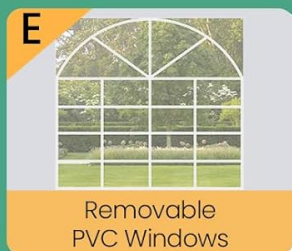
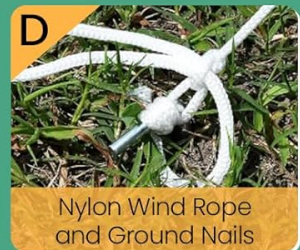
## 4. SETUP INSTRUCTIONS

---

Assembly of the COBIZI 20' x 40' Party Tent requires at least 4-6 people. No additional tools are required as components connect with a spring bottom mechanism.

### 4.1 Frame Assembly

1. Unpack all components and lay them out on a clear, flat surface. Identify all poles and connectors.
2. Begin by assembling the base frame using the ground bars and connectors. Ensure the closed ground link design is correctly formed for maximum stability.
3. Connect the vertical poles to the base frame.
4. Assemble the roof frame structure, connecting the horizontal and triangular roof poles. The stable triangular roof design enhances structural integrity.
5. Lift the roof frame onto the vertical poles, securing all connections.



*Image: Key components of the tent structure, illustrating solid joints, the rust-resistant frame, ground bar connections, and anchoring points.*

## 4.2 Roof Cover and Sidewall Installation

1. Carefully drape the 160g PE roof cover over the assembled frame. Ensure it is centered and evenly distributed.
2. Secure the roof cover to the frame using the elastic ball bungees.
3. Attach the 6 removable sidewalls and 2 zipper doors as needed. The sidewalls feature PVC church windows for light and can be installed freely to customize the tent's configuration.
4. Ensure all zippers are functioning correctly for the doors.

# Rainforced Structure with Detachable Sidewalls

Can be disassembled and assembled as required

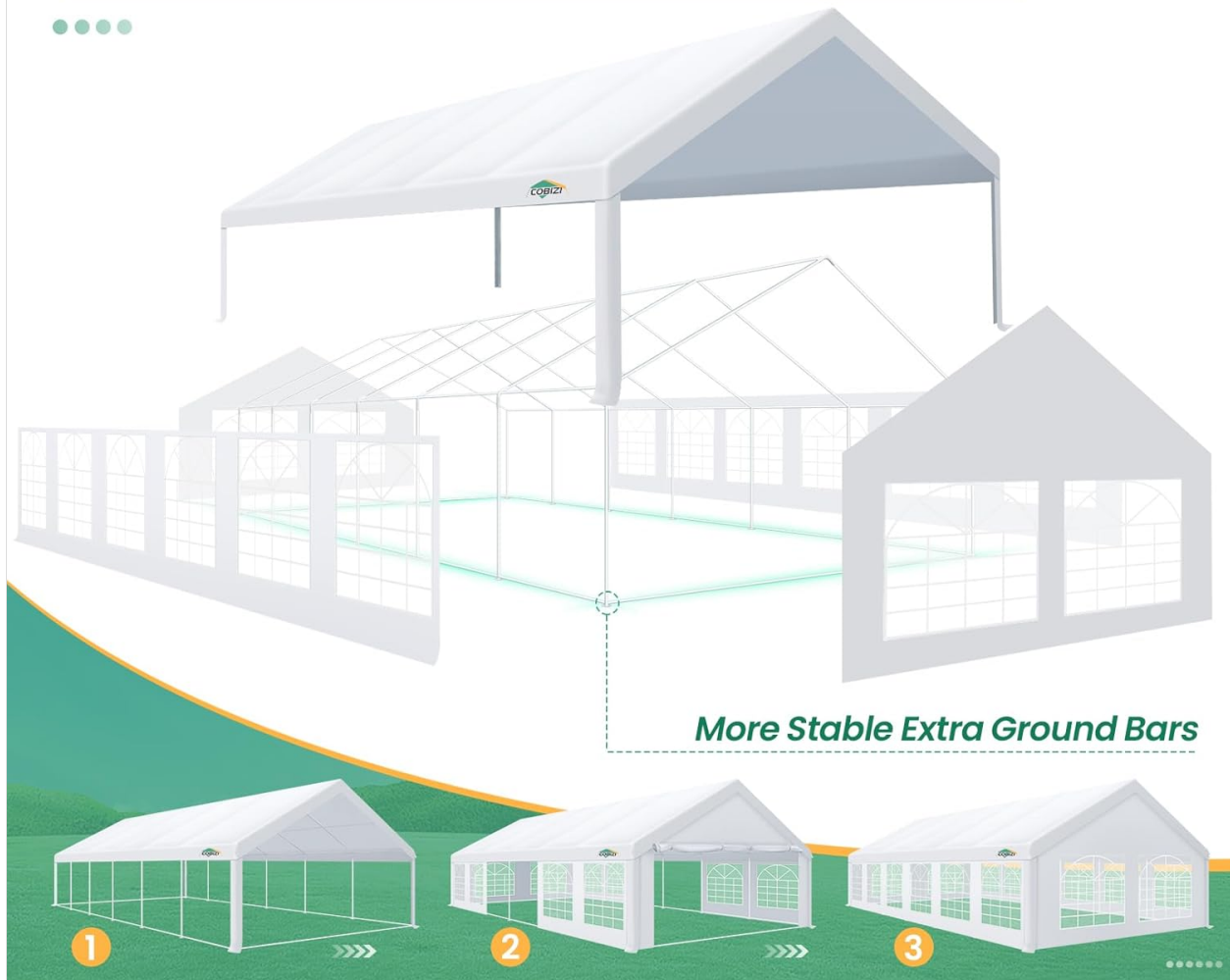


Image: Illustration of the tent's reinforced structure, highlighting the detachable sidewalls and the stable extra ground bars.

## 4.3 Anchoring the Tent

Proper anchoring is critical for stability and safety.

1. Drive the provided pegs into the ground through the tent's footplates.
2. Attach the wind ropes to the designated points on the tent frame and secure them to additional ground pegs, pulling them taut at an appropriate angle.
3. Regularly check the tension of the wind ropes and the security of the pegs, especially during prolonged use or changing weather conditions.

## 4.4 Assembly Video Guide

For a visual guide on the assembly process, please refer to the official product video below:

Your browser does not support the video tag.

Video: Official COBIZI video demonstrating the assembly and features of the Heavy Duty Large Party Tent.

## 5. OPERATING INSTRUCTIONS (USAGE)

## 5.1 General Use

The COBIZI 20' x 40' Party Tent is designed for various outdoor activities. Its spacious interior can accommodate approximately 50 people for seated events or up to 160 people standing. It is suitable for:

- Parties and Celebrations
- Weddings and Receptions
- Commercial Events
- Temporary Carport or Storage Shelter



*Image: The COBIZI Party Tent situated in a natural outdoor setting, demonstrating its suitability for various events.*

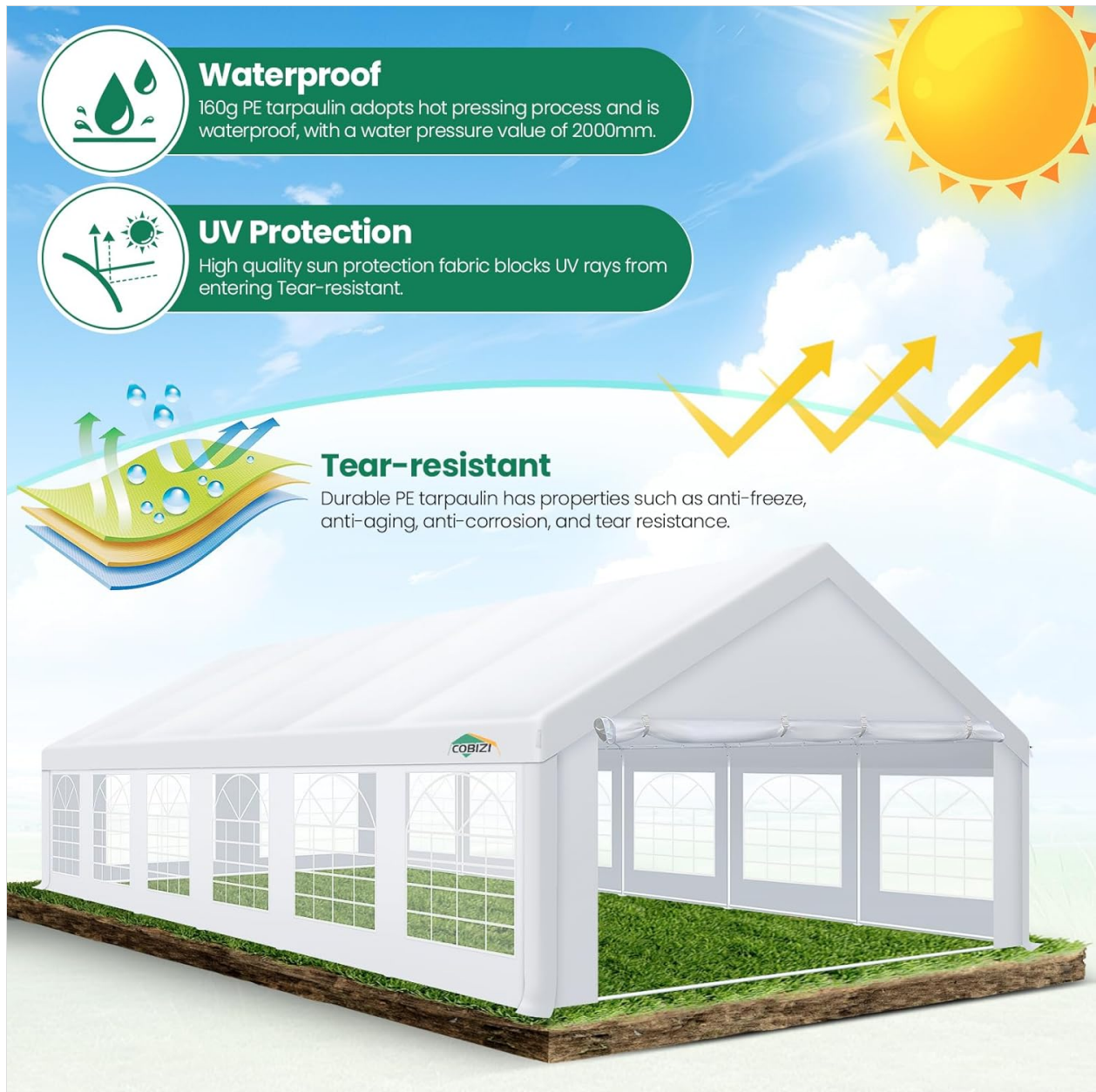
## 5.2 Ventilation and Climate Control

The tent features 6 removable sidewalls with 12 PVC church windows and 2 zipper doors. These can be adjusted to manage ventilation and temperature:

- **Ventilation:** On hot days, detach some sidewalls or roll up the zipper doors to allow for cross-ventilation.
- **Warmth:** On colder days, keep all sidewalls and doors closed to retain warmth inside the tent.

### 5.3 Weather Considerations

The tent's roof cover is made of heat-sealed, triple-layer 160g polyethylene fabric, offering UV 50+ protection (blocking 99% of harmful UV rays) and is waterproof (1500mm+, 2000mm water pressure value). It is also windproof, rainproof, dustproof, anti-snow, and tear-resistant.



*Image: Visual representation of the tent fabric's waterproof, UV protection, and tear-resistant qualities.* Despite these features, it is crucial to adhere to the safety guidelines regarding strong winds and heavy precipitation. The tent is designed for temporary use and should be disassembled in extreme weather conditions.



*Image: The COBIZI Party Tent shown in a snowy environment, highlighting its robust construction for various seasons.*

## 6. MAINTENANCE

---

### 6.1 Cleaning

- **Fabric:** Clean the tent fabric with mild soap and water. Do not use harsh chemicals or abrasive cleaners, as these can damage the material and its protective coatings. Rinse thoroughly and allow to air dry completely before storage.
- **Frame:** Wipe down the steel frame with a damp cloth to remove dirt and debris. Ensure the frame is dry to prevent rust.

### 6.2 Storage

- Before disassembling and storing, ensure all parts of the tent (fabric, frame, ropes) are clean and completely dry to prevent mold, mildew, and rust.
- Store the tent components in a cool, dry place, away from direct sunlight and extreme temperatures.
- Keep components organized in their original packaging or suitable storage bags to prevent loss or

damage.

## 7. TROUBLESHOOTING

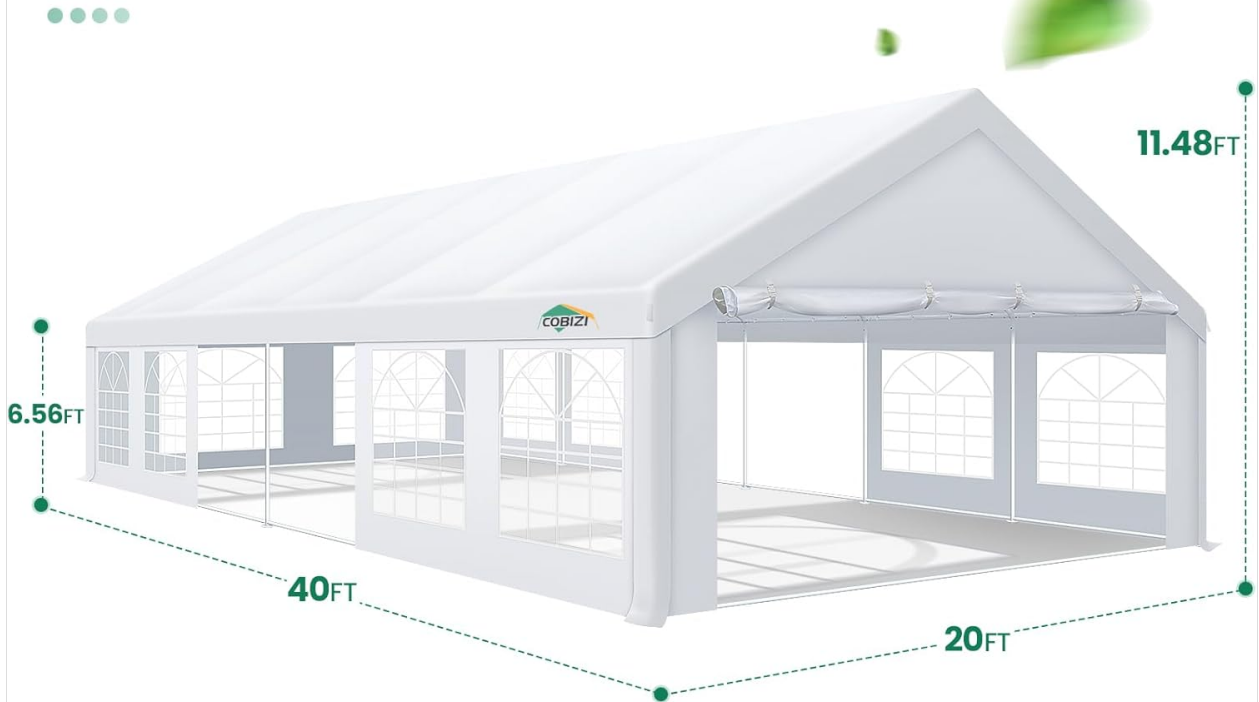
- **Tent Instability:** Ensure all frame connections are fully engaged. Verify that ground bars are properly installed and that pegs and wind ropes are securely anchored and taut.
- **Water Leakage:** Check that the roof cover is correctly positioned and secured with bungees, ensuring no gaps. While the material is waterproof, extreme conditions or improper setup can lead to leaks.
- **Difficulty with Assembly/Disassembly:** Refer to the assembly video and instructions. Ensure you have enough people assisting with the process. Do not force connections.
- **Damaged Parts:** If any part is damaged during shipping or use, contact customer service for assistance.

## 8. SPECIFICATIONS

<b>Brand</b>	COBIZI
<b>Model Number</b>	80-w
<b>Dimensions (L x W x H)</b>	20' x 40' x 11.48' (480"L x 240"W x 130"H)
<b>Material</b>	Reinforced Alloy Steel Frame, 160g PE Roof Cover, PVC Windows
<b>Color</b>	White
<b>UV Protection</b>	99% (UV 50+)
<b>Water Resistance Level</b>	Waterproof (1500mm+, 2000mm water pressure value)
<b>Item Weight</b>	300 Pounds
<b>Occupancy (Standing)</b>	Up to 160 persons
<b>Occupancy (Seated at Trestle Tables)</b>	112-119 persons
<b>Assembly Required</b>	Yes

# Product Size

Shipped in 5 Boxes



 <p>Seated at Trestle Tables (5ft):112-119</p>	 <p>Shade Space: 800FT<sup>2</sup></p>	 <p>Standing: 160</p>
---	---	--

*Image: Detailed product size diagram, indicating the tent's dimensions and capacity estimates.*

## 9. WARRANTY AND SUPPORT

COBIZI is committed to providing quality products and customer satisfaction. If you encounter any problems with any part of your COBIZI 20' x 40' Heavy Duty Party Tent, please contact our customer service team. We are dedicated to providing after-sales service and support to resolve any issues you may have. For assistance, please refer to the contact information provided with your purchase or visit the official COBIZI website.