

[Manuals.plus](#) /

> [Klighten](#) /

> Klighten 24W LED Wall Light with Motion Sensor (Model A310/2-3000K) Instruction Manual

Klighten A310/2-3000K

Klighten 24W LED Wall Light with Motion Sensor

MODEL: A310/2-3000K

Instruction Manual

1. Introduction

Thank you for choosing the Klighten 24W LED Wall Light with Motion Sensor. This product is designed to provide efficient and versatile lighting for both indoor and outdoor environments. Featuring a motion sensor, adjustable beam angle, and IP65 waterproof rating, this wall light combines functionality with modern aesthetics. Please read this manual carefully before installation and use to ensure proper operation and safety.

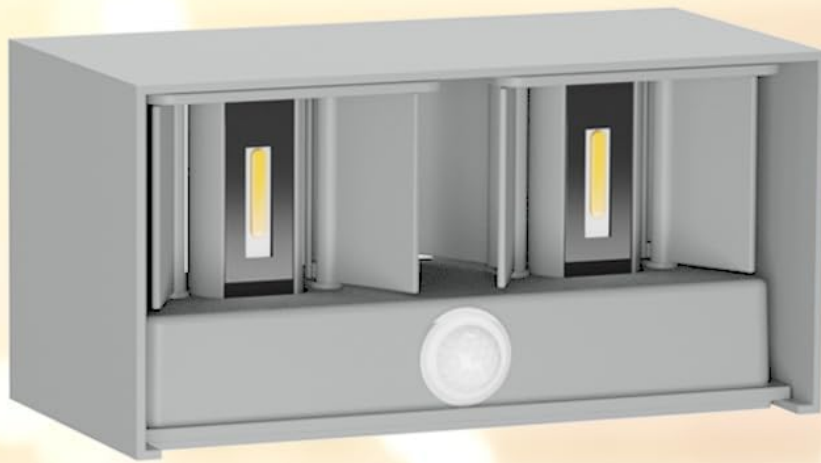
2. Safety Instructions

- Always disconnect power before installation, maintenance, or cleaning.
- Installation should be performed by a qualified electrician to ensure compliance with local electrical codes.
- Do not attempt to modify the product in any way.
- Ensure the mounting surface is stable and can support the weight of the fixture.
- Keep the product away from flammable materials.
- Do not look directly into the LED light source when it is on.

3. Package Contents

Verify that all components are present and undamaged:

- 1 x Klighten 24W LED Wall Light (with 4 COB lamp beads)
- Mounting screws and wall plugs
- Instruction Manual



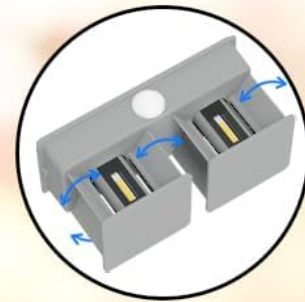
Product Description



Superior
Aluminium Material



Excellent
COB Lamp



Adjustable
angle 0-120°

Figure 3.1: Disassembled view of the Klighten 24W LED wall light, highlighting its superior aluminum material, excellent COB lamp, and adjustable angle mechanism. Installation accessories like screws and wall plugs are also shown.

4. Product Features

- **Ultra-High Brightness:** Equipped with two 12W 750lm lights and 4 high-quality COB lamp beads, providing a total brightness of 24W 1500lm.
- **Automatic On/Off:** Integrated motion detector and human infrared sensor automatically turn the light on when motion is detected within 3-5 meters and off after 20-30 seconds of no motion.
- **High-Quality Construction:** Made from pure aluminum with a short-circuit resistant LED driver, ensuring durability and safety.
- **Adjustable Beam Angle:** Features an updated design allowing adjustment of the light beam angle from 0° to 120°, enabling customizable lighting effects.
- **IP65 Waterproof:** The exterior casing is fully aluminum with a waterproof coating, providing IP65 protection against rust, yellowing, corrosion, and deformation, making it ideal for outdoor use.

Adjustable Angle 0-120°

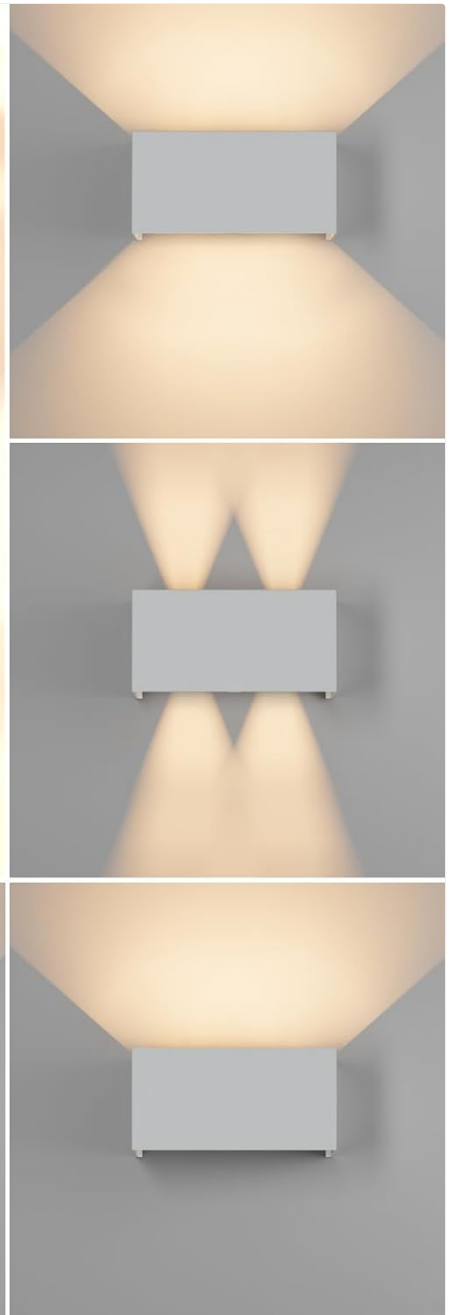
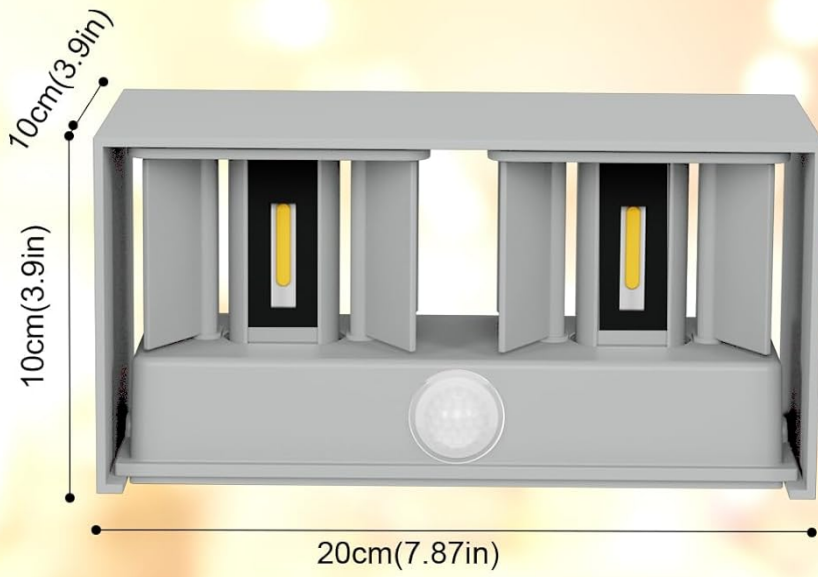


Figure 4.1: Dimensions of the Klighten 24W LED wall light and various light patterns achievable with its 0-120° adjustable beam angle.



Figure 4.2: The IP65 waterproof capability of the Klighten 24W LED wall light, showing it being exposed to rain without damage.

5. Specifications

Brand	Klighten
Model Number	A310/2-3000K
Power Consumption	24 Watts
Luminous Efficiency	1500 Lumen
Color Temperature	3000K (Warm White)
Material	Aluminum
Color	Grey
Dimensions (L x W x H)	20.8 x 11 x 10.8 cm

Waterproof Rating	IP65
Power Source	Corded Electric (220 Volts)
Switch Type	Motion Detector
Mounting Type	Wall Mount
Energy Label	G (View EPREL)

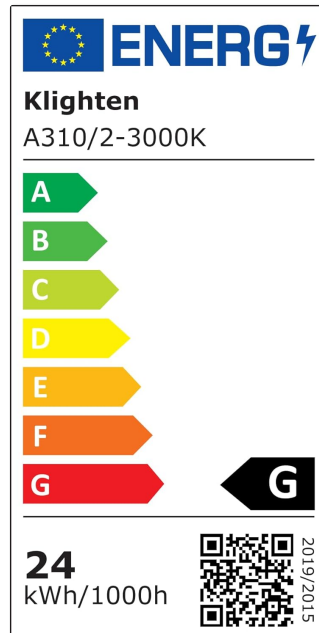


Figure 5.1: The EU energy efficiency label for the Klighten A310/2-3000K model, indicating an energy class G and 24 kWh/1000h consumption. A QR code is visible, linking to the EPREL database.

6. Installation

Follow these steps for safe and proper installation:

- 1. Prepare the Fixture:** Carefully pull out the screws securing the back cover of the wall light.
- 2. Mount the Back Cover:** Position the back cover on the desired wall location. Mark the drilling points, drill holes, insert wall plugs, and securely attach the back cover to the wall using the provided screws.
- 3. Connect Wiring:** Connect the electrical wires from your power supply to the terminals on the wall lamp. Ensure correct polarity (Live, Neutral, Earth) according to local electrical standards.
- 4. Attach the Lamp:** Align the main body of the wall lamp with the mounted back cover and secure it using the screws removed in step 1.
- 5. Install the Shade:** Place the outer shade over the lamp body, ensuring it is properly seated and secured.

Installation Steps

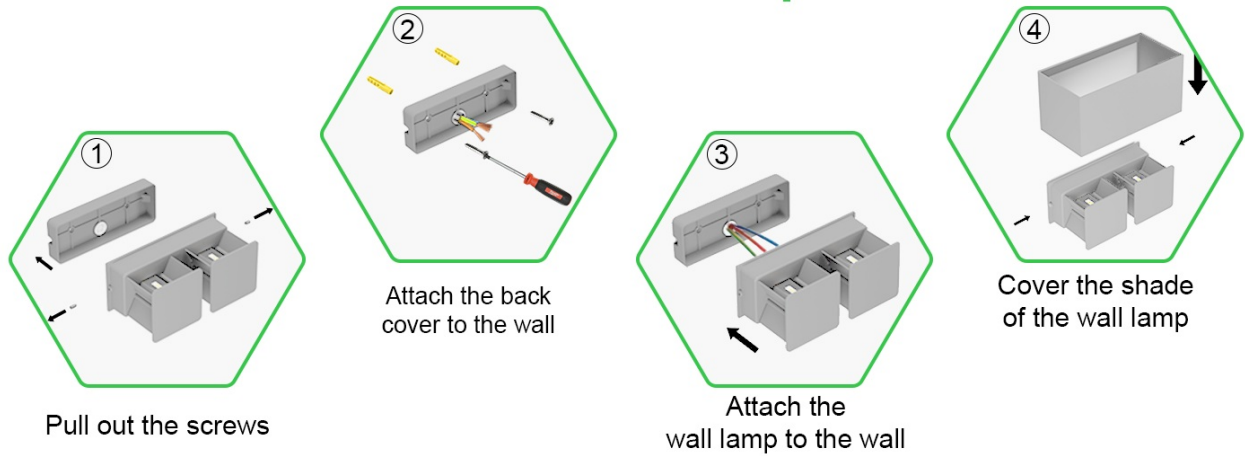


Figure 6.1: A four-step visual guide for installing the Klighten 24W LED wall light, showing how to pull out screws, attach the back cover to the wall, attach the lamp to the wall, and cover with the shade.

7. Operation

7.1 Motion Sensor Functionality

The Klighten LED Wall Light is equipped with an intelligent motion sensor. The light will automatically turn on when it detects movement within its sensing range (approximately 3-5 meters). After the detected motion ceases for 20-30 seconds, the light will automatically turn off. The sensor is also designed to operate primarily in low-light conditions, remaining off during bright daylight to conserve energy.

Your browser does not support the video tag.

Video 7.1: A short video demonstrating the Klighten 24W LED wall light's adjustable beam angle and motion sensor functionality, showing the light activating as a person approaches.

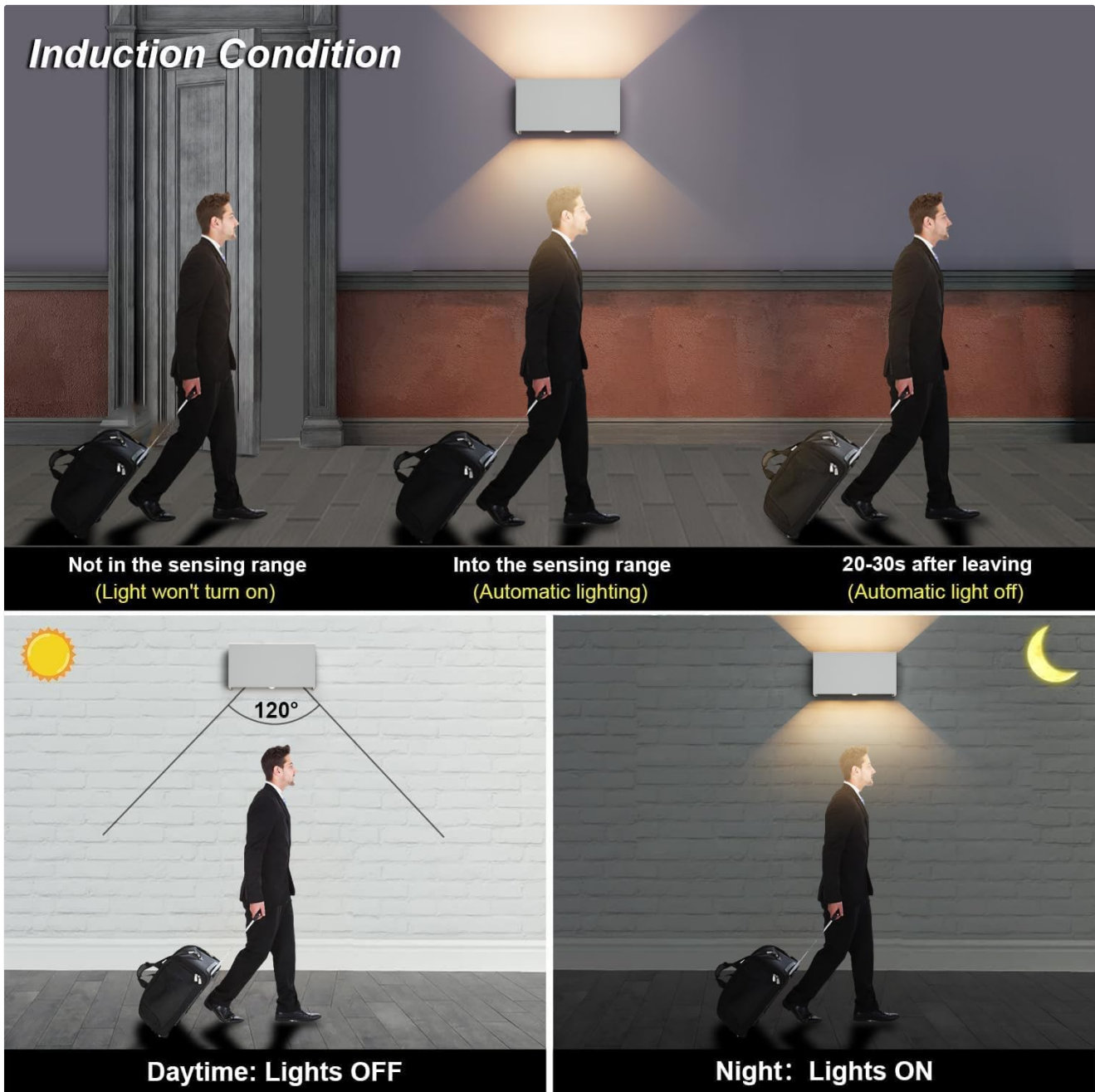


Figure 7.2: A diagram illustrating the motion sensor's functionality: light off when outside sensing range, automatic lighting when entering, and automatic light off 20-30 seconds after leaving. It also shows lights off during daytime and on during nighttime.

7.2 Adjustable Beam Angle

The wall light features internal adjustable baffles that allow you to customize the upward and downward beam angles from 0° to 120°. To adjust, gently open the fixture (refer to installation steps for accessing internal components) and manually position the baffles to achieve your desired lighting effect. Ensure the fixture is securely closed after adjustment.

Living room



Indoor use



Bedroom



Outdoor use

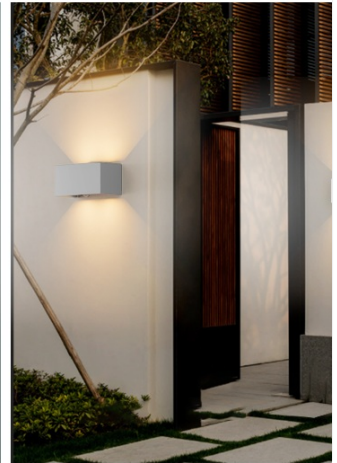


Figure 7.3: An illustration demonstrating the adjustable beam angle design of the Klighten wall light, showing various light patterns that can be created.

8. Maintenance

- **Cleaning:** Regularly clean the exterior of the fixture with a soft, damp cloth. Do not use abrasive cleaners or solvents.
- **Inspection:** Periodically check the wiring and mounting for any signs of wear or damage. Ensure all connections remain secure.
- **LEDs:** The LED light source is integrated and not user-replaceable. If the LEDs fail, the entire fixture may need replacement.

9. Troubleshooting

Problem	Possible Cause	Solution
Light does not turn on.	No power supply, loose wiring, faulty sensor, or daylight.	Check power connection. Ensure wiring is secure. Test in low-light conditions. If issues persist, consult an electrician.
Light stays on continuously.	Constant motion in sensing area, sensor malfunction.	Ensure no continuous movement (e.g., swaying branches) in the detection zone. If the problem persists, the sensor may be faulty.
Light flickers.	Unstable power supply, loose connection.	Check power source stability. Inspect all wiring connections for tightness.

10. Warranty and Support

Klighten products are manufactured to high-quality standards. For warranty information, technical support, or service inquiries, please refer to the contact details provided with your purchase or visit the official Klighten website. Please retain your proof of purchase for warranty claims.

