

Manuals+

[Q & A](#) | [Deep Search](#) | [Upload](#)

manuals.plus /

- › [OREiN](#) /
- › [OREiN 4500LM/30W Motion Sensor Outdoor Flood Light Instruction Manual](#)

OREiN OL3600354

OREiN 4500LM/30W Motion Sensor Outdoor Flood Light Instruction Manual

MODEL: OL3600354

1. Introduction

This manual provides detailed instructions for the installation, operation, and maintenance of your OREiN 4500LM/30W Motion Sensor Outdoor Flood Light. Please read this manual thoroughly before installation and use to ensure proper function and safety. Keep this manual for future reference.



Image 1: OREiN 4500LM/30W Motion Sensor Outdoor Flood Light, front view with three adjustable light heads and a motion sensor below.

2. Safety Information

WARNING: Risk of electric shock. Disconnect power at the fuse or circuit breaker before installation or servicing. This product must be installed in accordance with the applicable installation code by a person familiar with the construction and operation of the product and the hazards involved.

- Ensure the power supply is turned off before beginning installation.
- Use only approved connectors and wiring suitable for outdoor use.
- Do not attempt to modify the fixture. Any modifications may void the warranty and create safety hazards.
- Consult a qualified electrician if you are unsure about any part of the installation process.
- This fixture is designed for outdoor use and is IP65 waterproof rated.

3. Package Contents

Verify that all components are present before beginning installation:

- Light Fixture (1)
- Mounting Bracket (1)
- Screws (for mounting)
- Wire Nuts (for electrical connections)
- Instruction Manual (1)

4. Product Features

- **High Brightness & Efficiency:** 4500 Lumens output with 30W power consumption, offering 150LM/W efficiency.
- **Adjustable Motion Sensor:** 180° wide sensing angle with a detection range up to 50 feet.
- **Three Operating Modes:** TEST Mode, AUTO Mode, and Dusk-to-Dawn (D2D) Mode for versatile lighting control.
- **Durable & Weatherproof:** IP65 waterproof rating, constructed from polycarbonate material for resistance against rain, dust, snow, and extreme temperatures.
- **Flexible Installation:** Supports both wall mounting and soffit mounting.
- **Adjustable Light Heads:** Three light heads can be independently adjusted to direct illumination where needed.
- **Color Temperature:** 5000 Kelvin (white light).

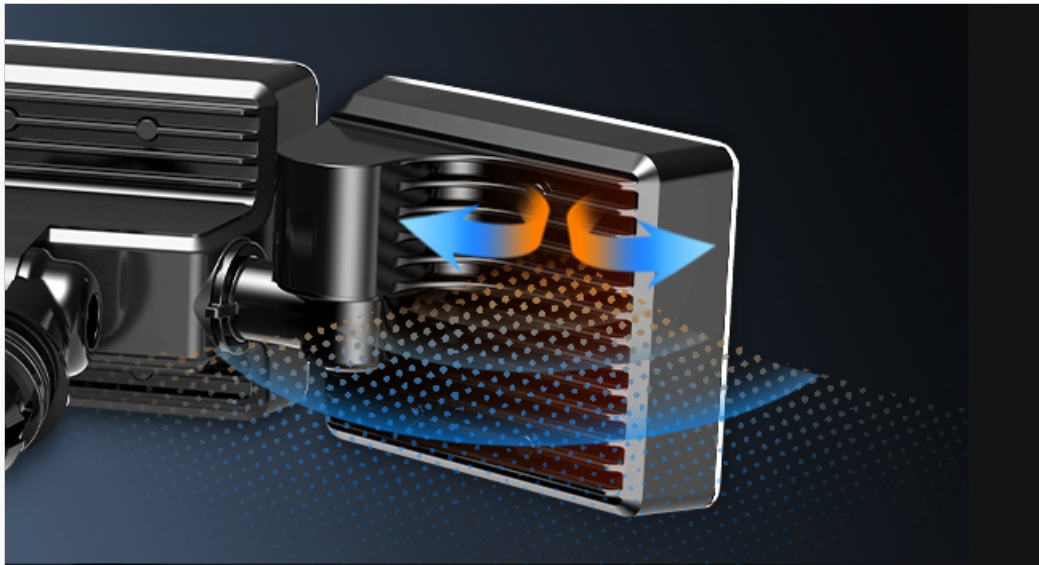


Image 2: Illustration demonstrating the IP65 waterproof rating, showing the flood light enduring rain, snow, and wind.

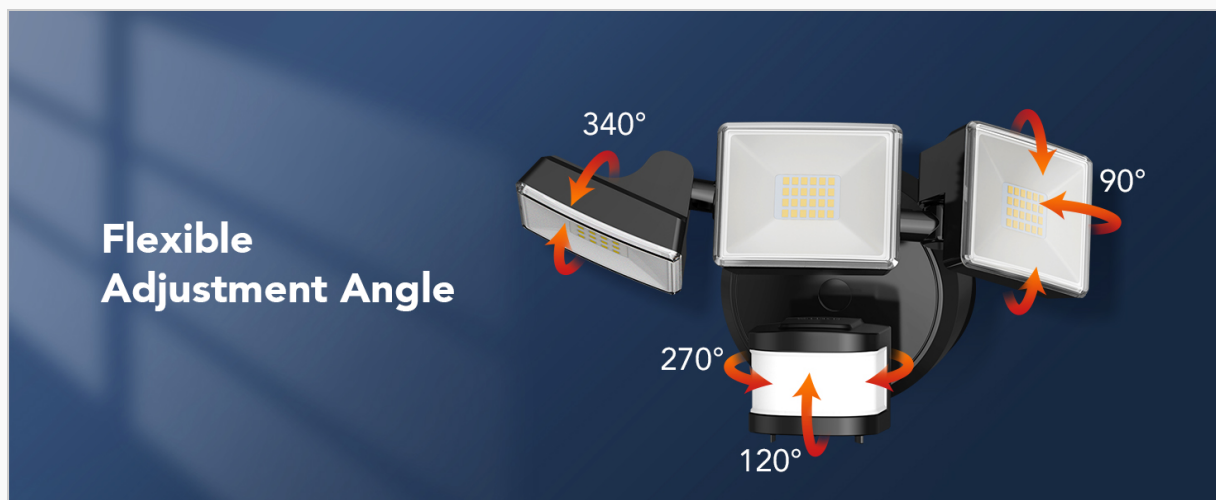


Image 3: Diagram showing the flexible adjustment angles of the three light heads (up to 340° horizontally, 90° vertically) and the motion sensor (up to 270° horizontally, 120° vertically).

5. Setup and Installation

This flood light is hardwired and requires connection to your home's electrical system. Professional installation is recommended.

1. **Turn Off Power:** Before starting, ensure the power to the installation area is turned off at the circuit breaker.
2. **Secure Mounting Bracket:** Attach the mounting bracket to the junction box using the provided screws. Ensure it is securely fastened.
3. **Connect Wires:** Connect the household wiring to the light fixture's wires using the provided wire nuts. Typically, black to black (live), white to white (neutral), and green/bare copper to green (ground).
4. **Secure the Light Fixture:** Mount the light fixture onto the mounting bracket, ensuring a tight and secure fit.
5. **Insert Waterproof Plug:** Ensure any necessary waterproof plugs are properly inserted to maintain the IP65 rating.
6. **Adjust Light Heads:** Position the three light heads to cover the desired illumination area.

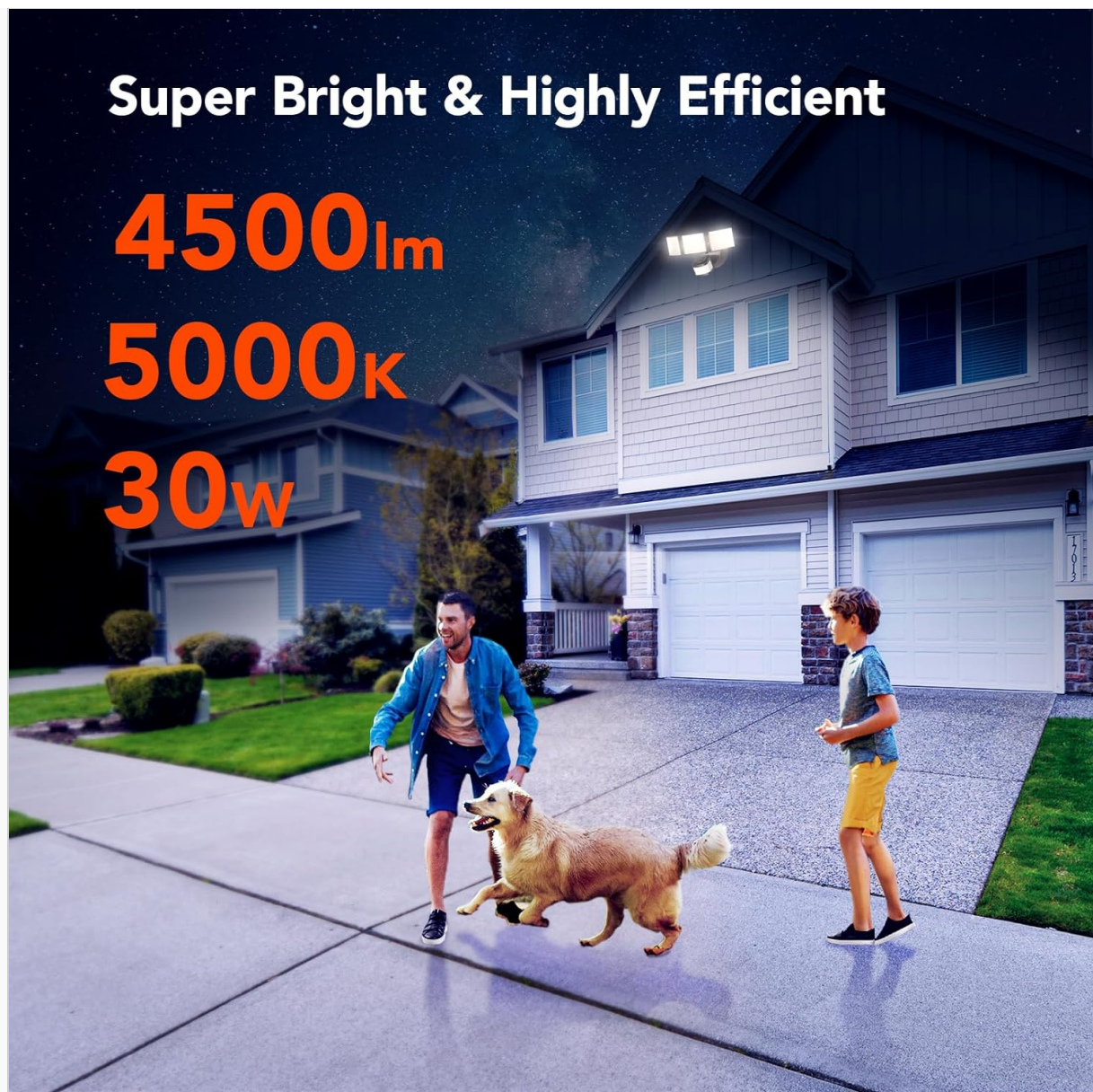


Image 4: Step-by-step diagram illustrating the hardwired installation process, including securing the mounting bracket, connecting wires, and attaching the light fixture.

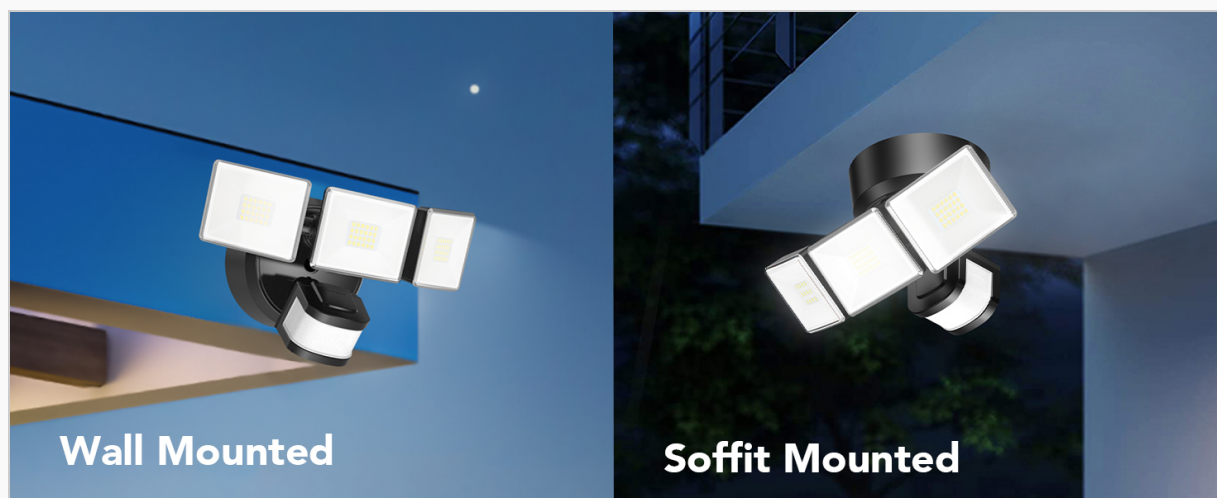


Image 5: Examples of the flood light installed in both wall-mounted and soffit-mounted configurations.

6. Operating Instructions

The OREiN flood light features an adjustable motion sensor with three distinct operating modes:

Image 6: Close-up view of the motion sensor controls, showing dials for TIME (1/5/10 minutes), SENSITIVITY (10ft/20ft/30ft/Max 50ft), and a switch for MODE (TEST/AUTO/D2D).

Mode Selection:

- **TEST Mode:** The light turns on for a fixed 5-second duration when motion is detected, regardless of ambient light. This mode is used for testing the sensor's coverage area during installation.
- **AUTO Mode:** The light activates only at night when motion is detected. The duration the light stays on and the sensitivity of the sensor can be adjusted.
- **D2D (Dusk-to-Dawn) Mode:** The light automatically turns on at dusk and turns off at dawn, providing continuous illumination throughout the night. Motion sensing is not active in this mode.

3 Modes for Daily Lighting

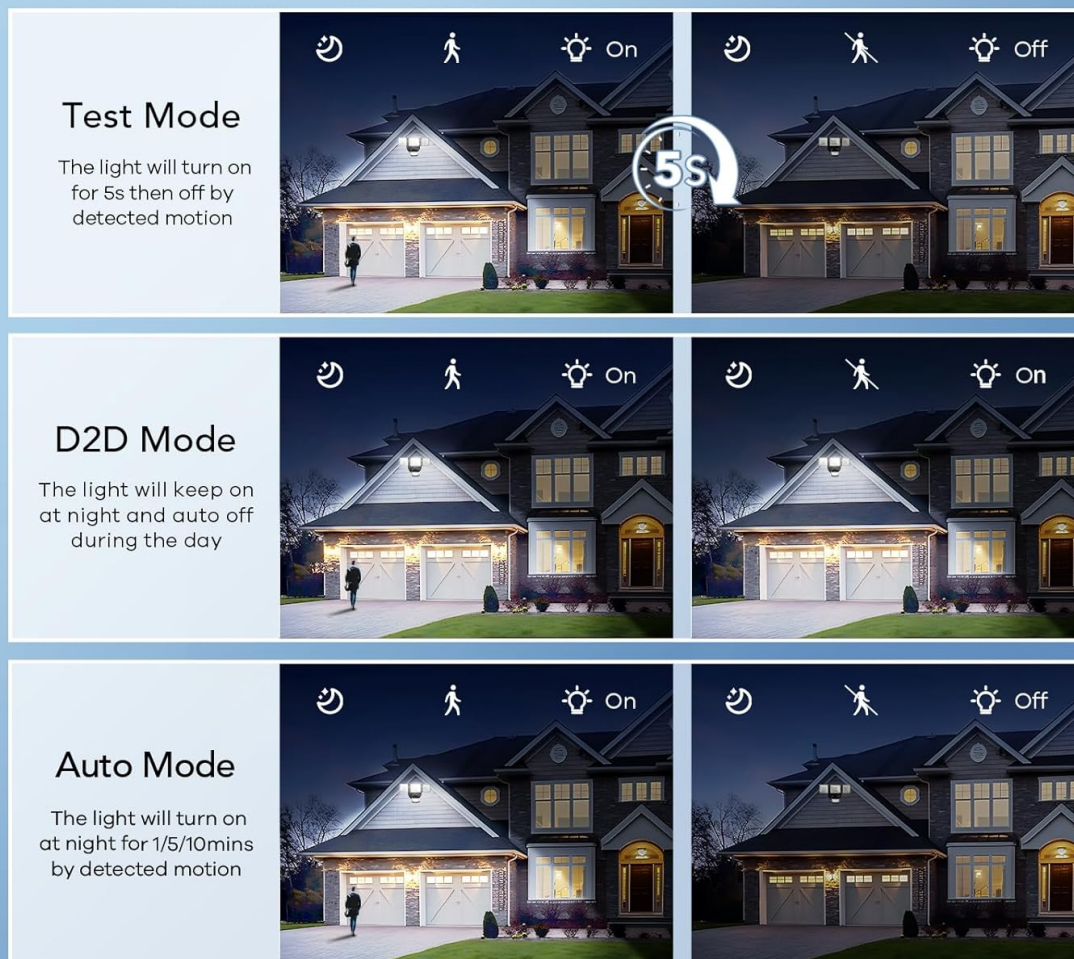


Image 7: Visual explanation of the three operating modes: Test Mode (light on for 5s with motion), D2D Mode (light on all night), and Auto Mode (light on at night with motion for adjustable time).

Adjusting Settings (AUTO Mode):

- **TIME Dial:** Adjusts how long the light stays on after motion is detected. Options typically include 1, 5, or 10 minutes.
- **SENSITIVITY Dial:** Adjusts the detection range of the motion sensor. Options typically include 10ft,

20ft, 30ft, or Max (up to 50ft). A higher sensitivity setting means a longer detection distance.

7. Maintenance

Regular maintenance ensures optimal performance and longevity of your flood light.

- **Cleaning:** Periodically clean the light fixture and motion sensor lens with a soft, damp cloth. Do not use abrasive cleaners or solvents.
- **Inspection:** Regularly inspect the wiring and mounting for any signs of wear, damage, or loosening. Address any issues promptly.
- **No Bulb Replacement:** This LED fixture does not require bulb replacement. The integrated LEDs are designed for long-term use.

8. Troubleshooting

If you encounter issues with your OREiN flood light, refer to the following common problems and solutions:

- **Light does not turn on:**
 - Ensure power is supplied to the fixture and the circuit breaker is not tripped.
 - Check the mode setting. In AUTO mode, it will only activate at night. In D2D mode, it will only activate at dusk.
 - Verify the motion sensor is not obstructed.
- **Light stays on continuously:**
 - If in D2D mode, this is normal operation.
 - If in AUTO mode, reduce the SENSITIVITY setting. Environmental factors like moving branches or passing vehicles can trigger the sensor.
 - Ensure the TIME dial is set correctly.
- **Motion sensor is not detecting:**
 - Increase the SENSITIVITY setting.
 - Ensure the sensor lens is clean and unobstructed.
 - Verify the sensor is aimed correctly towards the desired detection area.

9. Specifications

Feature	Specification
Brand	OREiN
Model Name	OL3600354
Product Dimensions	7.6"L x 8"W x 6"H
Item Weight	1.92 pounds
Brightness	4500 Lumens
Wattage	30 watts
Color Temperature	5000 Kelvin (White Light)

Feature	Specification
Water Resistance Level	IP65 Waterproof
Motion Sensing Angle	180°
Motion Sensing Distance	Up to 50 feet
Power Source	AC/DC (Hardwired)
Material	Acrylonitrile Butadiene Styrene (ABS)
Installation Type	Wall Mount and Ceiling Mount
Voltage	120 Volts
Included Components	Light Fixture, Mounting Bracket, Screws, Wire Nuts, Instruction Manual

OREiN 3 Heads Flood Lights



LED Beams	36	72	96
Lumen/Watt	3500LM/26W	4500LM/30W	2400LM/6500LM/42W
Senser Features	240°/40FT	240°/40FT	180°/75FT
Light Mode	3Modes	3Modes	4Modes
Lighting Area Range	3500 sq.ft	4500 sq.ft	6000 sq.ft
Applications	Front Door, Stairs	Garage, Yard	Swimming Pools, Big Patio
Hardwired	2 Wires	2 Wires	3 Wires
Material	Durable ABS	Durable ABS	Solid Aluminum

Image 8: Comparison table showing specifications for different OREiN 3-head flood light models, including the 4500LM/30W version.

10. Warranty

This OREiN flood light is covered by a **24-month warranty** from the date of purchase. Please retain your proof of purchase for warranty claims. The warranty covers defects in materials and workmanship under normal use.

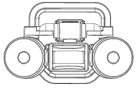
11. Support

For any questions, technical assistance, or warranty inquiries, please contact OREiN customer support:

OREIN

**LED Security Lights
With Motion Sensor**

Model: OL3600140 OL3600140 OL3600140 OL3600140 OL3600140



Please read these instructions thoroughly prior to installation, then store in a safe place for future reference.



[OREIN LED Security Lights with Motion Sensor: Installation and Operation Guide](#)

Detailed installation, setup, and troubleshooting guide for the OREIN LED Security Lights with Motion Sensor (Model OL3600140). Learn about sensor settings, operating modes, and product specifications.