

PhoFuta M832

PhoFuta M832 Portable Thermal Printer User Manual

Model: M832

1. INTRODUCTION

The PhoFuta M832 is an ultra-portable wireless thermal printer designed for convenience and efficiency. Weighing approximately 1.5 pounds and compact in size, it is ideal for use in various settings including business trips, vehicles, offices, homes, and schools. This printer utilizes thermal technology, eliminating the need for ink cartridges and simplifying your printing experience.

PHOFUTA

Portable Printer Wireless For Travel



The PhoFuta M832 printer is designed for portability, easily fitting into a bag for travel.

2. SAFETY INFORMATION

Please read all safety instructions carefully before using the device to ensure safe and proper operation.

- Do not expose the printer to extreme temperatures, direct sunlight, or high humidity.
- Keep the printer away from water or other liquids to prevent electric shock or damage.
- Use only the provided charging cable and adapter.

- Do not attempt to disassemble or repair the printer yourself. Contact customer support for assistance.
- Ensure proper ventilation when charging the device.

3. WHAT'S IN THE BOX

Verify that all components are present in the package:

- 1 x PhoFuta M832 Portable A4 Printer
- 1 x USB Cable and Type-C Converter
- 1 x A4 Thermal Paper Roll
- 1 x User Manual

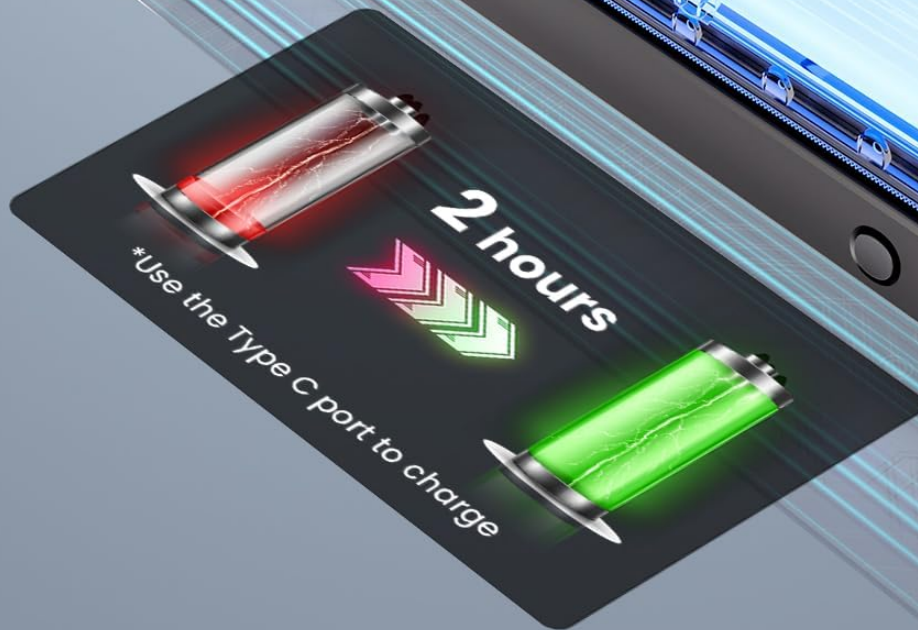
4. SETUP

4.1 Charging the Device

Before first use, fully charge the printer. Connect the provided USB-C cable to the printer's charging port and the other end to a compatible power source (e.g., wall adapter, computer USB port). The indicator light will show charging status.

PHOFUTA

2600mAh
Print 150 Sheets on a Full Charge



The printer features a 2600mAh battery, capable of printing approximately 150 sheets on a full charge, which takes about 2 hours using a Type-C port.

4.2 Loading Thermal Paper

The PhoFuta M832 supports various thermal paper types, including roll paper, single sheets, and folding paper. Open the paper compartment cover, insert the thermal paper according to the diagram, ensuring the printable side faces the print head. Close the cover securely.

PHOFUTA

Supports 3 Types of Paper

- ✓ Roll Paper
- ✓ Single Sheet Paper
- ✓ Folding Paper

Single Sheet Paper

Folding Paper

Roll Paper



Adjustable Stopper

The printer is versatile, supporting three types of thermal paper: roll paper, single sheet paper, and folding paper, with an adjustable stopper for different widths.

4.3 Connecting to Your Device

The printer offers both Bluetooth and USB connectivity options.

- **Bluetooth Connection:** Turn on the printer and enable Bluetooth on your smartphone or tablet. Download the Phomemo app (available for iOS and Android). Open the app, search for the printer, and pair.
- **USB Connection:** Connect the printer to your laptop or computer using the provided USB-C cable. Install the necessary drivers (usually available from the PhoFuta website or included on a small disk/QR code).

PHOFUTA

Bluetooth & USB Connection



The PhoFuta M832 supports both Bluetooth and USB connections, compatible with a wide range of operating systems including iOS, Android, Mac OS, Windows, Chrome OS, and Linux.

5. OPERATING INSTRUCTIONS

5.1 Basic Printing

Once connected, open the document or image you wish to print from your device. Select the PhoFuta M832 as your printer. Adjust print settings as needed (e.g., paper size, orientation) and initiate the print command. The printer will feed the thermal paper and produce the printout.

5.2 Print Quality

The PhoFuta M832 offers a maximum print resolution of 300 DPI (dots per inch) for black and white prints, ensuring clear and legible documents.

PHOFUTA

300DPI--Clearer Printing

M832

BOARDING PASS

NAME: MADRID, ESP

CLASS: BUSINESS

SEAT: 17A

DATE: 08.00

TIME: 08.00

GATE: A7

ZONE: 5

PRKL: 0000962792825

DATE CLOSING: 30 MINUTES BEFORE

300DPI

BUSINESS CLASS

NAME: ALEXANDER IBRAHIM

FROM: MADRID, ESP

TO: HELSINKI, FIN

FLIGHT: PRL420

DATE: 08 AUG

TIME: 08.00

ZONE: 5

SEAT: 17A

Other

BOARDING PASS

NAME: MADRID, ESP

CLASS: BUSINESS

SEAT: 17A

DATE: 08 AUG

TIME: 08.00

GATE: A7

ZONE: 5

PRKL: 0000962792825

DATE CLOSING: 30 MINUTES BEFORE

BUSINESS CLASS

NAME: ALEXANDER IBRAHIM

FROM: MADRID, ESP

TO: HELSINKI, FIN

FLIGHT: PRL420

DATE: 08 AUG

TIME: 08.00

ZONE: 5

SEAT: 17A

The PhoFuta M832 delivers clearer printing with 300 DPI resolution, as demonstrated by the sharp text on a sample boarding pass.

5.3 Supported Paper Sizes

The printer supports various paper sizes, including US Letter, A4, and smaller sizes like 4-inch, 3-inch, and 2-inch (216mm, 210mm, 110mm, 80mm, 53mm respectively). Ensure you use thermal paper compatible with these

dimensions.

6. MAINTENANCE

6.1 Cleaning the Printer

Regularly clean the printer to maintain optimal performance. Use a soft, dry, lint-free cloth to wipe the exterior. For the print head, use a cotton swab lightly dampened with isopropyl alcohol, wiping gently. Ensure the printer is off and disconnected from power before cleaning.

6.2 Thermal Paper Considerations

The PhoFuta M832 is an inkless printer, meaning it uses thermal paper that reacts to heat to create images. This eliminates the need for ink cartridges, preventing messy hands and reducing ongoing costs. However, it is crucial to use only thermal paper, as regular paper will not work. Thermal prints may fade over time if exposed to heat, light, or certain chemicals, so store important documents appropriately.

PHOFUTA

Inkless printers For Home Use

No ink and Won't get your/children's hands dirty



The inkless design of the PhoFuta M832 ensures clean operation, preventing ink stains on hands, making it suitable for home use.

Only with Thermal Paper

M832



✓ 0 Cartridge/Toner/Ink

✓ 1.5 lb Weight

✓ Frindly Use

✓ Compact and portable

✓ Similar to a bottle of mineral Water

*Save Space Save Cost One Click to Use

Traditional Printer



✗ Harmful Cartridge

✗ Bulky

✗ Complex operation

✗ Bulky

✗ Large Size

*Save Space Save Cost One Click to Use
*Occupy Space High Cost Complex to Use

The M832 operates exclusively with thermal paper, offering advantages such as no ink cartridges, lighter weight, and compact portability compared to traditional printers.

7. TROUBLESHOOTING

If you encounter issues with your PhoFuta M832 printer, refer to the following common problems and solutions:

- **Printer not turning on:** Ensure the battery is charged. Connect the printer to a power source and try again.
- **Cannot connect via Bluetooth:** Make sure Bluetooth is enabled on both devices. Restart the printer and your device. Ensure the Phomemo app is installed and updated.
- **Poor print quality:** Check if you are using thermal paper. Ensure the paper is loaded correctly. Clean the print head if smudges or lines appear.
- **Paper jam:** Turn off the printer, open the paper compartment, and carefully remove any jammed paper. Ensure paper is loaded straight and not wrinkled.
- **Printer not responding:** Try restarting the printer. If the issue persists, perform a factory reset (refer to the Phomemo app or detailed user manual for instructions).

8. SPECIFICATIONS

Feature	Specification
Brand	PhoFuta
Model	M832
Product Number	PH-M832-GY
Color	Grey
Printing Technology	Thermal
Printer Output	Monochrome
Max Print Resolution (B&W)	300 DPI
Max Print Speed (Monochrome)	5 Pages per minute
Max Input Sheet Capacity	300 sheets
Supported Media Type	Plain Paper (Thermal Paper)
Sheet Size	US Letter/A4/4"/3"/2" (216mm/210mm/110mm/80mm/53mm)
Duplex Printing	No
Connectivity Technology	Bluetooth
Hardware Interface	USB-C
Compatible Devices	Smartphones, Tablets, Laptops, Computers
Scanner Type	Portable
Scanner Resolution	203 x 203 DPI
Product Dimensions	31 x 11.4 x 9.2 cm
Product Weight	992 g
Battery	1 Lithium Ion (included)
Battery Composition	Lithium
Software Updates Guaranteed Until	Unknown

9. WARRANTY AND SUPPORT

9.1 Warranty Information

The PhoFuta M832 Portable Thermal Printer comes with a **Lifetime Warranty**. This warranty covers manufacturing defects and ensures the long-term reliability of your device. Please retain your proof of purchase for warranty claims.

9.2 Customer Support

For technical assistance, troubleshooting, or warranty inquiries, please contact PhoFuta customer support. Refer to

© 2024 PhoFuta. All rights reserved.

[Phomemo M832 A4 Portable Thermal Printer User Guide and Tips](#)

Information and usage tips for the Phomemo M832 A4 Portable Thermal Printer by Zoolion, including setup instructions and troubleshooting advice.

Information and usage tips for the Phomemo M832 A4 Portable Thermal Printer by Zoolion, including setup instructions and troubleshooting advice.



M832 Portable Printer User Guide

Before using this product, please read this manual carefully.

English

01. Package Contents

Printer*1 Power Bag*1 Paper Roll*1 Quick Start Guide*1



Attention: All pictures in this instruction manual are for illustration purposes only. The actual product may vary due to product enhancement.

02. Printer Components

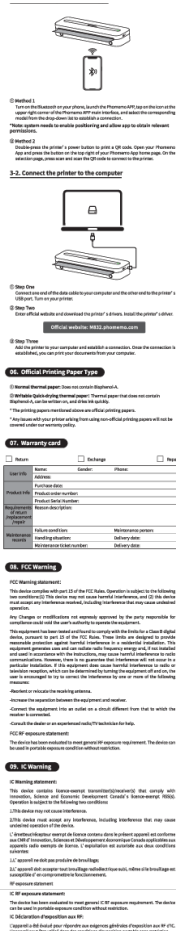


Button Functions

Operation	Description
Turn on the printer	Press and hold the Power Button for 2 seconds until the power indicator light turns on.
Print a page	Press the Paper Roll button to print a page. The printer will print the page on the paper roll.
Turn off the printer	Press and hold the Power Button for 2 seconds until the power indicator light turns off.

Indicator Lights

Light	Power Indicator	Status
Power	On (Green)	Power On
Power	Off (Red)	Power Off
Power	Flashing (Yellow)	Low Paper or Low Ink
Power	Flashing (Red)	Low Paper or Low Ink
Power	Flashing (Blue)	Low Paper or Low Ink
Power	Flashing (Green)	Low Paper or Low Ink
Power	Flashing (Yellow)	Low Paper or Low Ink
Power	Flashing (Red)	Low Paper or Low Ink
Power	Flashing (Blue)	Low Paper or Low Ink
Power	Flashing (Green)	Low Paper or Low Ink
Power	Flashing (Yellow)	Low Paper or Low Ink
Power	Flashing (Red)	Low Paper or Low Ink
Power	Flashing (Blue)	Low Paper or Low Ink
Power	Flashing (Green)	Low Paper or Low Ink
Power	Flashing (Yellow)	Low Paper or Low Ink
Power	Flashing (Red)	Low Paper or Low Ink
Power	Flashing (Blue)	Low Paper or Low Ink
Power	Flashing (Green)	Low Paper or Low Ink
Power	Flashing (Yellow)	Low Paper or Low Ink
Power	Flashing (Red)	Low Paper or Low Ink
Power	Flashing (Blue)	Low Paper or Low Ink
Power	Flashing (Green)	Low Paper or Low Ink
Power	Flashing (Yellow)	Low Paper or Low Ink
Power	Flashing (Red)	Low Paper or Low Ink
Power	Flashing (Blue)	Low Paper or Low Ink
Power	Flashing (Green)	Low Paper or Low Ink
Power	Flashing (Yellow)	Low Paper or Low Ink
Power	Flashing (Red)	Low Paper or Low Ink
Power	Flashing (Blue)	Low Paper or Low Ink
Power	Flashing (Green)	Low Paper or Low Ink
Power	Flashing (Yellow)	Low Paper or Low Ink
Power	Flashing (Red)	Low Paper or Low Ink
Power	Flashing (Blue)	Low Paper or Low Ink
Power	Flashing (Green)	Low Paper or Low Ink
Power	Flashing (Yellow)	Low Paper or Low Ink
Power	Flashing (Red)	Low Paper or Low Ink
Power	Flashing (Blue)	Low Paper or Low Ink
Power	Flashing (Green)	Low Paper or Low Ink
Power	Flashing (Yellow)	Low Paper or Low Ink
Power	Flashing (Red)	Low Paper or Low Ink
Power	Flashing (Blue)	Low Paper or Low Ink
Power	Flashing (Green)	Low Paper or Low Ink
Power	Flashing (Yellow)	Low Paper or Low Ink
Power	Flashing (Red)	Low Paper or Low Ink
Power	Flashing (Blue)	Low Paper or Low Ink
Power	Flashing (Green)	Low Paper or Low Ink
Power	Flashing (Yellow)	Low Paper or Low Ink
Power	Flashing (Red)	Low Paper or Low Ink
Power	Flashing (Blue)	Low Paper or Low Ink
Power	Flashing (Green)	Low Paper or Low Ink
Power	Flashing (Yellow)	Low Paper or Low Ink
Power	Flashing (Red)	Low Paper or Low Ink
Power	Flashing (Blue)	Low Paper or Low Ink
Power	Flashing (Green)	Low Paper or Low Ink
Power	Flashing (Yellow)	Low Paper or Low Ink
Power	Flashing (Red)	Low Paper or Low Ink
Power	Flashing (Blue)	Low Paper or Low Ink
Power	Flashing (Green)	Low Paper or Low Ink
Power	Flashing (Yellow)	Low Paper or Low Ink
Power	Flashing (Red)	Low Paper or Low Ink
Power	Flashing (Blue)	Low Paper or Low Ink
Power	Flashing (Green)	Low Paper or Low Ink
Power	Flashing (Yellow)	Low Paper or Low Ink
Power	Flashing (Red)	Low Paper or Low Ink
Power	Flashing (Blue)	Low Paper or Low Ink
Power	Flashing (Green)	Low Paper or Low Ink
Power	Flashing (Yellow)	Low Paper or Low Ink
Power	Flashing (Red)	Low Paper or Low Ink
Power	Flashing (Blue)	Low Paper or Low Ink
Power	Flashing (Green)	Low Paper or Low Ink
Power	Flashing (Yellow)	Low Paper or Low Ink
Power	Flashing (Red)	Low Paper or Low Ink
Power	Flashing (Blue)	Low Paper or Low Ink
Power	Flashing (Green)	Low Paper or Low Ink
Power	Flashing (Yellow)	Low Paper or Low Ink
Power	Flashing (Red)	Low Paper or Low Ink
Power	Flashing (Blue)	Low Paper or Low Ink
Power	Flashing (Green)	Low Paper or Low Ink
Power	Flashing (Yellow)	Low Paper or Low Ink
Power	Flashing (Red)	Low Paper or Low Ink
Power	Flashing (Blue)	Low Paper or Low Ink
Power	Flashing (Green)	Low Paper or Low Ink
Power	Flashing (Yellow)	Low Paper or Low Ink
Power	Flashing (Red)	Low Paper or Low Ink
Power	Flashing (Blue)	Low Paper or Low Ink
Power	Flashing (Green)	Low Paper or Low Ink
Power	Flashing (Yellow)	Low Paper or Low Ink
Power	Flashing (Red)	Low Paper or Low Ink
Power	Flashing (Blue)	Low Paper or Low Ink
Power	Flashing (Green)	Low Paper or Low Ink
Power	Flashing (Yellow)	Low Paper or Low Ink
Power	Flashing (Red)	Low Paper or Low Ink
Power	Flashing (Blue)	Low Paper or Low Ink
Power	Flashing (Green)	Low Paper or Low Ink
Power	Flashing (Yellow)	Low Paper or Low Ink
Power	Flashing (Red)	Low Paper or Low Ink
Power	Flashing (Blue)	Low Paper or Low Ink
Power	Flashing (Green)	



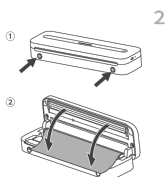
Phomemo M832 Printer Quick Start Guide

A concise guide to setting up and using the Phomemo M832 printer with both computer and smartphone connections, including driver installation, paper loading, and Bluetooth pairing.

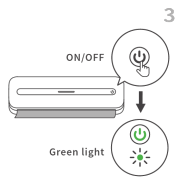
QUIN M832 Portable Printer Quick Start Guide

A quick start guide for the QUIN M832 portable printer, detailing setup for computer and smartphone use, app installation, and printing procedures. Includes specifications and usage instructions in English, Japanese, and German.

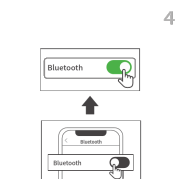
Warnhinweis: Holen/Installieren Sie die Phomemo App.



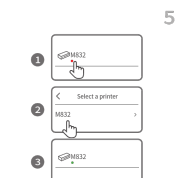
English: Follow the steps to load the paper roll properly.
日本語: 手順に従って紙ロールを正しくセットしてください。
Deutsch: Folgen Sie den Schritten, um die Papierrolle ordnungsgemäß zu laden.



English: Press and hold for 3s to turn on the M832 printer.
日本語: 3秒を長押しすると、M832起動できる。
Deutsch: Halten Sie 3 Sekunden lang gedrückt, um den M832 Drucker einzuschalten.



English: Turn on Bluetooth from phone settings.
日本語: スマートフォンの設定からBluetoothをオンにする。
Deutsch: Aktivieren Sie Bluetooth über die Telefoneneinstellungen.



English: Connect the printer via Bluetooth in the Phomemo App.
日本語: PhomemoアプリでBluetoothを利用してM832と接続する。
Deutsch: Verbinden Sie den Drucker über Bluetooth in der Phomemo App.



English: Select the file in the Phomemo App to print.
日本語: Phomemoアプリでファイルを選択して印刷する。
Deutsch: Wählen Sie die zu druckende Datei in der Phomemo App aus.

FCC Warning

This device complies with part 15 of the FCC Rules. Operation is subject to the following two conditions: (1) This device may not cause harmful interference, and (2) this device must accept any interference received, including interference that may cause undesired operation.

Any changes or modifications not authorized by the party responsible for compliance could void the user's authority to operate the equipment.

This equipment has been tested and found to comply with the limits for a Class B digital device, pursuant to part 15 of the FCC Rules. These limits are designed to provide reasonable protection against harmful interference in a residential installation. This equipment generates and can radiate radio frequency energy and, if not properly used or installed, may cause interference with other electronic equipment. However, there is no guarantee that interference will not occur in a particular installation. If this equipment does cause interference to radio or television reception, which can be determined by turning the equipment off and on, the user is encouraged to take the following steps to correct the interference: (1) Reorient or relocate the receiving antenna. (2) Increase the separation between the equipment and receiver. (3) Consult the equipment dealer for a solution or consult different from that to which the manual is directed.

The device has been evaluated to meet general RF exposure requirements. The device can be used in portable exposure condition without restriction. The device can be used in portable exposure condition without restriction.

IC Warning

IC Notice:
Radio Standards Specification RSS Code, Issue 5, English
This device complies with the Canadian Radio Standards Specification (RSS) Code, Issue 5, English. This device complies with the limits for a Class B digital device, pursuant to part 15 of the RSS Code. These limits are designed to provide reasonable protection against harmful interference in a residential installation. This device generates and can radiate radio frequency energy and, if not properly used or installed, may cause interference with other electronic equipment. However, there is no guarantee that interference will not occur in a particular installation. If this equipment does cause interference to radio or television reception, which can be determined by turning the equipment off and on, the user is encouraged to take the following steps to correct the interference: (1) Reorient or relocate the receiving antenna. (2) Increase the separation between the equipment and receiver. (3) Consult the equipment dealer for a solution or consult different from that to which the manual is directed.

The device has been evaluated to meet general RF exposure requirements. The device can be used in portable exposure condition without restriction. The device can be used in portable exposure condition without restriction.

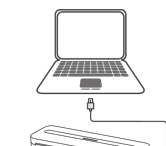
French:
Ce matériel est conforme aux exigences de l'Association canadienne de normalisation (ACN) Code, Version 5, en français. Ce matériel est conforme aux limites pour un appareil numérique de classe B, conformément à la partie 15 du Code de l'ACN. Ces limites sont conçues pour fournir une protection raisonnable contre les interférences nuisibles dans une installation résidentielle. Ce matériel génère et peut émettre de l'énergie radiofréquence et, s'il n'est pas utilisé ou installé correctement, peut causer des interférences avec d'autres équipements électroniques. Cependant, il n'y a aucune garantie que des interférences ne se produiront pas dans une installation particulière. Si ce matériel cause des interférences nuisibles à la réception radio ou télévisuelle, ce qui peut être déterminé en éteignant et rallumant le matériel, l'utilisateur est encouragé à prendre les mesures suivantes pour corriger les interférences: (1) Réorienter ou déplacer l'antenne de réception. (2) Augmenter la séparation entre le matériel et le récepteur. (3) Consulter le fournisseur du matériel pour une solution ou consulter une solution différente de celle à laquelle le manuel est dirigé.

The device has been evaluated to meet general RF exposure requirements. The device can be used in portable exposure condition without restriction. The device can be used in portable exposure condition without restriction.



Scan the QR code to view more instructions.
Scannez le QR code pour afficher plus d'instructions.
Scannen Sie den QR-Code, um weitere Anweisungen zu erhalten.

Computer Printing with Data Cable データケーブルを使用したコンピュータ印刷 Computerdruck mit Datenkabel





1



English Open the link: M832.phomemo.com
日本語 リンクを開きます: M832.phomemo.com
Deutsch Öffnen Sie den Link: M832.phomemo.com

2



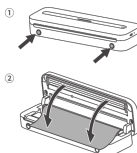
English Download the corresponding driver for your computer system.
日本語 コンピュータシステム向けのドライバをダウンロードします。
Deutsch Laden Sie das entsprechende Laufwerk für Ihr Computersystem herunter.

3



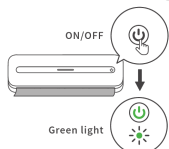
English Follow the above instructions to install the driver.
日本語 上記の手順でドライバをインストールしてください。
Deutsch Folgen Sie den obigen Anweisungen, um den Treiber zu installieren.

4



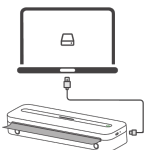
English Follow the steps to load the paper roll properly.
日本語 手順に従って紙ロールを正しくセットしてください。
Deutsch Folgen Sie den Schritten, um die Papierrolle ordnungsgemäß zu laden.

5



English Press and hold for 3s to turn on the M832 printer.
日本語 3秒を長押しして、M832印刷機を起動します。
Deutsch Halten Sie 3 Sekunden lang gedrückt, um den M832-Drucker einzuschalten.

6



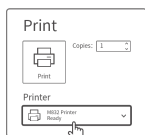
English Connect the printer to your computer with a Type-C data cable.
日本語 Type-Cケーブルを使用してプリンターをコンピュータに接続します。
Deutsch Schließen Sie den Drucker mit einem Type-C-Datenkabel an Ihren Computer an.

7



English Right-click the file and click the print button.
日本語 ファイルを右クリックして、印刷ボタンをクリックします。
Deutsch Klicken Sie mit der rechten Maustaste auf die Datei und klicken Sie auf die Schaltfläche 'Drucken'.

8





M832 Portable Printer User Guide

References: 1. *Journal of the American Medical Association*, 1997; 278:1021-1025.

English

01. Package Contents



*Atenție: Toată informația este în funcție de starea actuală a cunoașterii. Ilustrațiile pot să nu se potrivească cu realitatea. Pentru mai multe informații, consultați manualul de utilizare.

02. Printer Components



Business Description

Function	Operation
Turn on the printer	Press and hold the button for around 3 seconds until the power indicator light turns on.
Print LGI code	Double press the button a short time. Usually, the icon on the LCD indicating the copy from the phone and screen is no longer there.
Turn off the printer	Press and hold the button for around 3 seconds until the power indicator light turns off.

Indicator Light	Status	Power Indicator	Status
Printer Status	Normal	Light Green	Light Green Light
	Cover is open	Light Red	Light (Red)
	Changing ink/toner or paper	Light Green	Light Green Light
	Changing ink/toner or paper on	Light Green	Light Green Light
	Light Orange	Light Orange	Light Orange Light
Connectivity Status	Line Power	Light Green	Light Green Light
	Connectivity Connected	Light Green	Light Green Light
Paper Status	Blank	Light Green	Light Green Light
	No Paper (Paper Not Detected)	Light Red	Light (Red)
Others	Print Head is overheated	Light Red	Light (Red)
	Print Head is blocked	Light Red	Light (Red)

03. Precautions

④ Please use 5V or 24 input for charging.
Please connect the USB cable to the power adapter before charging, please gently insert or unplug the charging cable after charging, to prevent unnecessary damage to the port.

Battery warning instructions

- It is forbidden to disassemble, fix, open the battery, or throw it into fire.
- It never should be charged, if there is no power source.
- It never should be charged more than once, and it is strictly prohibited to use the battery for other purposes.
- There is a danger of explosion if the battery is exposed by the wrong type. Be sure to dispose of the used battery according to the instructions.
- If there are a lot of power after the power supply they should purchase a power supply that meets the requirements of corresponding safety standards or a power supply with CCC certification.

04. Install App

1. Downloaded the App

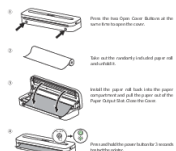
Search for Phormena in the Apple App Store, click the download and install button

Search for Phormena in the Google App Store, click the download and install button



95. In structural

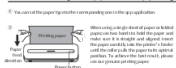
1. Instructions for consumable usage



→ How to feed film into the front and back of the loading paper

- 1 Take up one of printing paper and scratch both sides of the paper with your fingernail. The front side of the film will catch the paper with the front side facing upward.
- 2 The product can print at first state of paper. Please adjust the position of the corner of the film according to the address bar on the corner.
- 3 Use the front and back of the film to ensure precise printing paper.

2. Instructions for single sheet paper and folded paper usage



3-1. Connect the printer to the App



Method 1

Turn on the flashlight on your phone. Launch the Phenomena app with it on; it is an alternate app of the Phenomena app main interface, and submit the corresponding mail from the drop down list to establish a connection.

*State system needs to enable geotagging and allow app location information request.

3-2. Connect the printer to the computer

3-2. Connect the printer to the computer



③ **Step Two**
Enter all 14 serials and download the printer's drivers, install the printer's drivers

3 **Step Three**
Add the printer to your computer and establish a connection. On the screen that is

3 **Step Three**
Add the printer to your computer and establish a connection. On the screen that is

3 **Step Three**
Add the printer to your computer and establish a connection. On the screen that is

06. Official Printing Paper Type

07. Warranty card

☐ Return ☐ Exchange ☐ Repair

Client's data Name: _____ Gender: _____ Phone: _____

Product's info Purchased at: _____
 Product's number: _____
 Product's serial number: _____
 Retailer's name: _____

Signatures of clients Customer's signature: _____
 Retailer's signature: _____

Comments Failure description: _____
 Handling details: _____
 Date when to present: _____

08. FCC Warning

FCC Warning statement 1:

This device is compliant with part 15 of the FCC Rules. Operation is subject to the following two conditions: (1) This device may not cause harmful interference, and (2) this device must accept any interference received, including interference that may cause undesired operation.

Any changes or modifications not expressly approved by the party responsible for maintenance of the record shall be void. This is not a contract for services.

Phomemo M832 Portable Printer User Manual and Guide

Comprehensive user manual for the Phomemo M832 portable printer, covering setup, operation, troubleshooting, and specifications. Learn how to connect, print, and maintain your device.

