

Manuals+

[Q & A](#) | [Deep Search](#) | [Upload](#)

manuals.plus /

› [SUTRA](#) /

› [Sutra Infrared AC Blow Dryer - Model 20ACBDiRi-B1 User Manual](#)

SUTRA 20ACBDiRi-B1

Sutra Infrared AC Blow Dryer - Model 20ACBDiRi-B1 User Manual

Comprehensive instructions for safe and effective use.

1. IMPORTANT SAFETY INFORMATION

Please read all instructions before using this appliance. Keep this manual for future reference.

- **Water and Electricity:** Do not use this appliance near bathtubs, showers, basins, or other vessels containing water. If the appliance falls into water, unplug it immediately. Do not reach into the water.
- **Power Supply:** Ensure the voltage indicated on the appliance corresponds to your local mains voltage before connecting.
- **Unplugging:** Always unplug the appliance after use and before cleaning. Do not pull on the cord to unplug.
- **Children:** This appliance is not intended for use by persons (including children) with reduced physical, sensory or mental capabilities, or lack of experience and knowledge, unless they have been given supervision or instruction concerning use of the appliance by a person responsible for their safety. Children should be supervised to ensure that they do not play with the appliance.
- **Overheating:** To avoid overheating, do not block the air inlet or outlet openings.
- **Damage:** Do not operate the appliance with a damaged cord or plug, or if it has malfunctioned or been dropped or damaged in any manner. Contact customer support for assistance.
- **Attachments:** Use only attachments supplied by the manufacturer.

2. PRODUCT OVERVIEW

The Sutra Infrared AC Blow Dryer is designed for professional-grade hair drying with advanced Infrared (IR) and Ionic technologies to promote healthier hair.

Components:

- Infrared AC Blow Dryer Unit
- Concentrator Nozzle (for directed airflow)
- Power Cord



Image 2.1: The Sutra Infrared AC Blow Dryer, featuring its black matte finish and rose gold accents, with the infrared light visible at the nozzle.

Key Features:

- **Infrared (IR) Technology:** Penetrates the hair cuticle to lock in moisture and minimize damage.
- **Ionic Technology:** Helps reduce frizz and enhance shine.
- **Powerful AC Motor:** Provides strong, consistent airflow for faster drying.
- **Adjustable Settings:** 2 speed settings and 3 heat settings for versatile styling.
- **Cool Shot Button:** Locks in your style with a burst of cool air.



Section hair and select a heat setting.

Image 2.2: An illustration highlighting the key features of the blow dryer, including the negative ion generator, adjustable heat settings, and powerful AC motor.

3. SETUP

1. **Unpack:** Carefully remove the blow dryer and all accessories from the packaging.
2. **Inspect:** Check the appliance for any signs of damage. Do not use if damaged.
3. **Connect Power:** Plug the power cord into a suitable electrical outlet. Ensure your hands are dry before plugging in or unplugging the appliance.
4. **Attach Nozzle:** If desired, attach the concentrator nozzle to the front of the blow dryer by aligning it and pushing it firmly into place.

4. OPERATING INSTRUCTIONS

Follow these steps for optimal drying and styling results:

1. **Prepare Hair:** Gently towel-dry your hair to remove excess water. For best results and heat protection, consider applying a heat protectant spray or cream, such as SUTRA Heat Guard Heat Protectant Spray, to damp hair.



Use a round brush for volume or curl, or a paddle brush for straightening.

Image 4.1: A person applying heat protectant spray to damp hair before drying.

2. **Section Hair and Select Settings:** Divide your hair into manageable sections. Turn on the blow dryer and select your desired heat (Low, Medium, High) and speed (Low, High) settings using the switches on the handle.

- NEGATIVE ION GENERATOR
- ADJUSTABLE HEAT SETTINGS
- POWERFUL AC MOTOR



Image 4.2: A stylist sectioning hair and preparing to use the blow dryer, demonstrating the initial setup for styling.

- 3. Begin Drying:** Hold the hair dryer approximately 6 inches away from your head. Start drying at the roots, pointing the airflow downward along the hair shaft to encourage smoothness and shine.

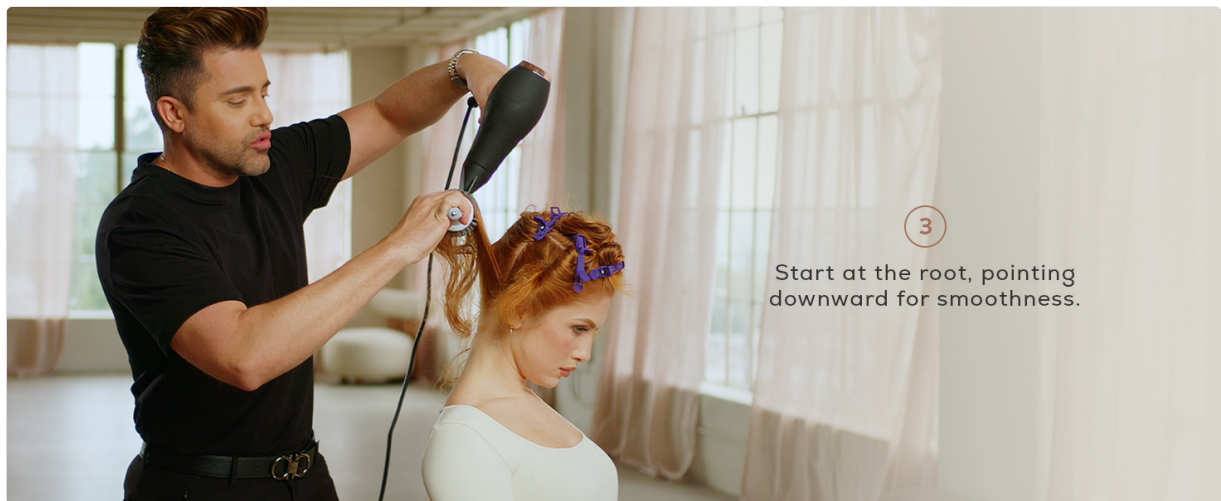


Image 4.3: A stylist drying hair from the roots, pointing the blow dryer downwards for a smooth finish.

- 4. Style as You Dry:** Use a round brush for adding volume or creating curls, or a paddle brush for straightening. Continue drying until your hair is styled as desired.



Image 4.4: A person with styled hair, illustrating the final result after using the blow dryer with a brush.

- 5. Set Style:** Press and hold the Cool Shot button for a burst of cool air to set your style in place and add shine.

6. **Power Off:** Once finished, turn off the appliance and unplug it from the power outlet.

5. MAINTENANCE

Cleaning:

- **Always unplug** the appliance before cleaning.
- **Exterior:** Wipe the exterior of the blow dryer with a soft, damp cloth. Do not use abrasive cleaners or solvents.
- **Air Filter:** Regularly check the rear air inlet filter for dust and hair buildup. Gently remove any debris using a soft brush or by hand to maintain optimal airflow and prevent overheating.

Storage:

- Allow the appliance to cool completely before storing.
- Store in a dry, safe place, out of reach of children.
- Do not wrap the power cord tightly around the appliance, as this can damage the cord.

6. TROUBLESHOOTING

If you encounter any issues, refer to the table below for common problems and solutions.

Problem	Possible Cause	Solution
Appliance does not turn on.	No power supply.	Check if the plug is securely inserted into the outlet. Test the outlet with another appliance.
Weak or inconsistent airflow.	Air inlet filter is blocked.	Unplug the dryer and clean the air inlet filter at the back of the appliance.
Appliance overheats and shuts off.	Overheating protection activated.	Unplug the dryer and allow it to cool down for several minutes. Clean the air inlet filter. Ensure air outlets are not blocked during use.
Hair is still frizzy after drying.	Improper technique or product use.	Ensure you are pointing the airflow downwards. Consider using a frizz-control product or applying the cool shot at the end of drying.

7. SPECIFICATIONS

Specification	Detail
Model Number	20ACBDiRi-B1
UPC	850041992785
Product Dimensions	7.4 x 5.5 x 8 inches
Weight	3.02 Pounds

Specification	Detail
Wattage	1800 watts
Power Source	Corded Electric
Color	Black
Material	Ceramic
Manufacturer	Sutra Beauty

8. WARRANTY AND SUPPORT

For warranty information, please refer to the documentation included with your purchase or contact the retailer where the product was acquired. For further assistance or support, please visit the official Sutra Beauty website or contact their customer service department.

Online Resources: www.sutrabeauty.com