

Webasto Thermo Top Evo 5013919A

Webasto Coolant Heater Thermo Top Evo with SmarTemp 3.0 Controller 12V User Manual

Model: Thermo Top Evo, Part Number: 5013919A

1. INTRODUCTION AND OVERVIEW

This manual provides comprehensive instructions for the installation, operation, and maintenance of the Webasto Thermo Top Evo 12V Coolant Heater with SmarTemp 3.0 Controller. This diesel coolant heater is designed to preheat a vehicle's coolant system and interior, contributing to improved engine performance and comfort in cold conditions. The system delivers a heat output of up to 5kW (17,200 BTU). The included SmarTemp 3.0 Bluetooth controller facilitates convenient control, monitoring, and diagnosis of the Thermo Top system.

2. PRODUCT COMPONENTS

The Webasto Thermo Top Evo SmarTemp 3.0 12V Coolant Heater Kit includes the following components:

- (1) Thermo Top Evo Heater
- (1) Wiring Harness
- (1) SmarTemp Control 3.0
- (1) Circulation Pump
- (1) Mounting Bracket
- (1) Fuel Line (5 meters)
- (1) Fuel Filter
- (1) Fuel Pump
- (1) Standpipe
- (1) Flexible Exhaust Tube (with Endcap, 1 meter)
- (1) Combustion Intake Tube (0.4 meters)

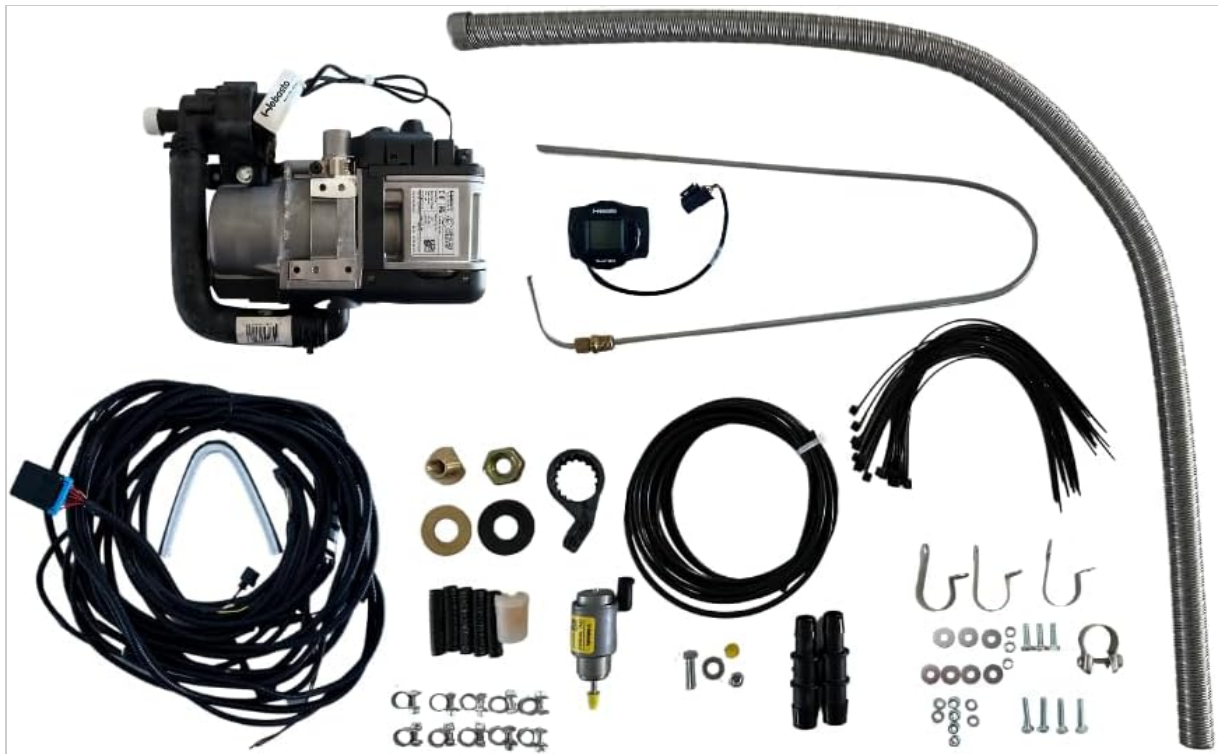


Figure 2.1: Overview of the Webasto Thermo Top Evo Coolant Heater Kit components.

3. SETUP AND INSTALLATION

Installation of the Webasto Thermo Top Evo coolant heater involves several critical steps, including mounting the heater unit, connecting to the vehicle's coolant system, installing the fuel supply system, and wiring the electrical components, including the SmarTemp 3.0 controller.

Important: Due to the complexity and safety requirements associated with fuel, coolant, and electrical systems, it is highly recommended that installation be performed by a qualified technician or an authorized Webasto service center. Improper installation can lead to system malfunction, damage to the vehicle, or personal injury.

3.1 Heater Unit Mounting

Select a suitable mounting location within the vehicle, ensuring adequate clearance for air intake, exhaust, and service access. Use the provided mounting bracket to secure the Thermo Top Evo heater unit firmly.

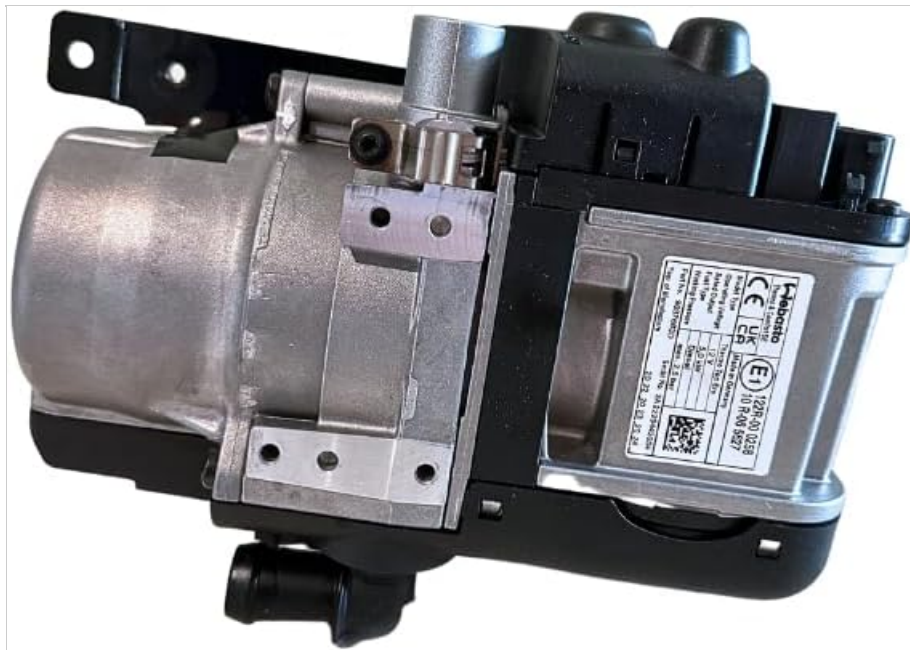


Figure 3.1: The Webasto Thermo Top Evo heater unit, showing its compact design and integrated mounting points.

3.2 Coolant System Integration

Integrate the heater into the vehicle's coolant circuit using appropriate coolant hoses and the circulation pump. Ensure all connections are secure and leak-free. The circulation pump is essential for distributing heated coolant throughout the engine and vehicle interior.



Figure 3.2: Webasto Thermo Top Evo heater with coolant connections, ready for integration into the vehicle's cooling system.

3.3 Fuel System Connection

Install the fuel pump and connect it to the vehicle's fuel tank via the standpipe and the provided fuel line. Ensure the fuel filter is installed correctly in the fuel line to prevent contaminants from reaching the heater. All fuel connections must be tight and free of leaks.

3.4 Electrical Wiring and Controller Installation

Connect the heater and circulation pump to the vehicle's electrical system using the provided wiring harness. Install the SmarTemp 3.0 controller in a convenient location within the vehicle cabin. Follow the wiring diagram provided in the full installation manual for correct connections to the vehicle's power supply and the heater unit.

4. OPERATING INSTRUCTIONS

The Webasto Thermo Top Evo heater is controlled via the SmarTemp 3.0 Bluetooth controller. This controller allows for activation, monitoring, and diagnostic functions.

4.1 SmarTemp 3.0 Controller Functions

- **Activation:** Turn the heater on or off.
- **Temperature Setting:** Adjust the desired interior temperature.
- **Timer Function:** Program specific heating times.
- **Monitoring:** View current operating status and diagnostic information.
- **Bluetooth Connectivity:** Control the heater via a compatible smartphone application.

Refer to the separate SmarTemp 3.0 user guide for detailed instructions on pairing with a smartphone and utilizing all controller features.

5. MAINTENANCE

Regular maintenance ensures the longevity and efficient operation of your Webasto Thermo Top Evo heater. It is recommended to have the heater inspected annually by a qualified technician, especially before the cold season.

- **Visual Inspection:** Periodically check all hoses, connections, and wiring for signs of wear, damage, or leaks.
- **Fuel Filter:** Inspect and replace the fuel filter as recommended by Webasto or if signs of clogging are present.
- **Exhaust System:** Ensure the exhaust tube is clear of obstructions and securely fastened.
- **Coolant Level:** Verify that the vehicle's coolant level is adequate.

6. TROUBLESHOOTING

If the heater system is not operating as expected, consider the following common issues:

- **Heater Fails to Start:**
 - Check vehicle battery voltage.
 - Ensure adequate fuel supply.
 - Verify all electrical connections are secure.
 - Check for error codes on the SmarTemp 3.0 controller.
- **Insufficient Heat Output:**

- Check coolant level in the vehicle.
- Ensure the circulation pump is operating.
- Inspect coolant hoses for kinks or blockages.

- **Unusual Noises or Odors:**

- Immediately shut down the heater.
- Inspect for fuel or exhaust leaks.
- Contact a qualified technician for diagnosis.

For detailed diagnostic information, consult the SmarTemp 3.0 controller's diagnostic menu or refer to the full service manual.

7. SPECIFICATIONS

Heater Type	Coolant Heater
Model	Thermo Top Evo
Part Number	5013919A
Voltage	12V
Heat Capacity	2.5 - 5 kW (8,600 - 17,200 BTU)
Fuel Type	Diesel
Engine Compatibility	Up to 15L
Fuel Consumption	As little as 1 gallon per 10 hours runtime
Dimensions (L x W x H)	8.54" x 3.58" x 5.79"
Controller	SmarTemp 3.0 Bluetooth Controller

8. WARRANTY AND SUPPORT

Information regarding the specific warranty period and terms for the Webasto Thermo Top Evo heater and SmarTemp 3.0 controller is typically provided with the product documentation. Please refer to the warranty card or the official Webasto website for detailed warranty coverage.

For technical support, service, or to locate an authorized Webasto service center, please visit the official Webasto website or contact their customer service department. Ensure you have your product model and serial number available when seeking support.

