

ANYFAR A4 Pro

ANYFAR A4 Pro Wireless CarPlay Adapter User Manual

Model: A4 Pro

1. PRODUCT OVERVIEW

The ANYFAR A4 Pro Wireless CarPlay Adapter converts your car's factory-installed wired CarPlay system into a wireless connection for your iPhone. This device allows for seamless integration of CarPlay features such as navigation, music playback, phone calls, messaging, and Siri, utilizing your car's existing touchscreen controls, voice commands, buttons, and knobs.



Image: ANYFAR A4 Pro Wireless CarPlay Adapter and accessories.

Key Features:

- **Wireless CarPlay Conversion:** Transforms wired CarPlay into a wireless experience.
- **Enhanced 5G Dual-Core Chip:** Ensures stable and rapid auto-connection, minimizing latency.
- **Thermal Vent Design:** Helps maintain optimal device temperature during extended use.
- **Compact Size:** Thumb-sized design for minimal space occupation and a clean car interior.
- **Hi-Fi Car Audio:** Utilizes WiFi 5 wireless technology for high-quality sound transmission.

2. PACKAGE CONTENTS

Upon opening your ANYFAR A4 Pro package, you should find the following items:

- ANYFAR A4 Pro Wireless CarPlay Adapter
- USB-A Cable
- USB-C Cable
- User Manual (this document)

Unparalleled Compatibility

Works on **800+** Car Models

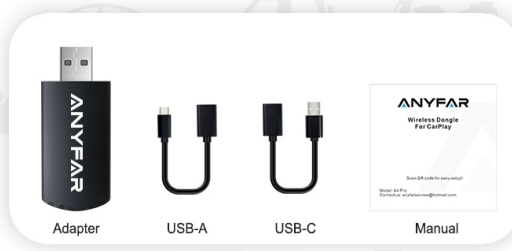


Image: Contents of the ANYFAR A4 Pro package.

3. COMPATIBILITY

The ANYFAR A4 Pro is designed for specific vehicle and device configurations:

- **Vehicle Compatibility:** Compatible with approximately 98% of cars manufactured from 2016 onwards that are equipped with factory-installed wired CarPlay.
- **iPhone Compatibility:** Requires an iPhone running iOS 10 or later.
- **Incompatible Vehicles:** Not compatible with BMW, Tesla, or aftermarket stereos.

If you are unsure about your car's factory-installed wired CarPlay status, please consult your vehicle's manual or contact your car manufacturer's support.

4. SETUP INSTRUCTIONS

Follow these steps for the initial setup of your ANYFAR A4 Pro Wireless CarPlay Adapter:

1. **Connect the Adapter:** Plug the ANYFAR A4 Pro adapter into your car's USB port. Use the provided USB-A or USB-C cable as needed for your vehicle's port type.
2. **Disconnect Existing Bluetooth (if applicable):** If your iPhone is already connected to your car's Bluetooth for calls or media, disconnect it. The CarPlayBox will establish its own Bluetooth connection.
3. **Enable Bluetooth and Wi-Fi on iPhone:** Ensure both Bluetooth and Wi-Fi are enabled on your iPhone.
4. **Pair with CarPlayBox:** On your iPhone, go to Bluetooth settings and search for available devices. Select the device named 'CarPlayBox_XXXX' (where XXXX is a unique identifier). Confirm the pairing request on your iPhone and allow access to contacts and favorites if prompted.
5. **Activate CarPlay:** Once paired, your car's infotainment system should prompt you to use CarPlay. Select 'Use CarPlay' to initiate the wireless connection.

Easy to Setup

Pairing is only required for **first use**



Image: Visual guide for initial setup steps.

Setup Video Guide:

Your browser does not support the video tag.

Video: A visual demonstration of how to pair the ANYFAR A4 Pro with your phone.

5. OPERATING YOUR ANYFAR A4 PRO

Once connected, your iPhone's CarPlay interface will appear on your car's display. You can interact with CarPlay using various methods:

- **Touchscreen Controls:** Directly tap and swipe on your car's display to navigate apps and menus.
- **Voice Commands (Siri):** Activate Siri by pressing the voice command button on your steering wheel or by saying "Hey Siri" to control functions hands-free.
- **Steering Wheel Buttons:** Use your car's built-in steering wheel controls for media playback

(skip tracks, adjust volume) and answering/ending calls.

- **Physical Knobs and Controls:** Utilize your car's physical knobs and buttons for functions like volume adjustment or menu navigation, depending on your vehicle's design.

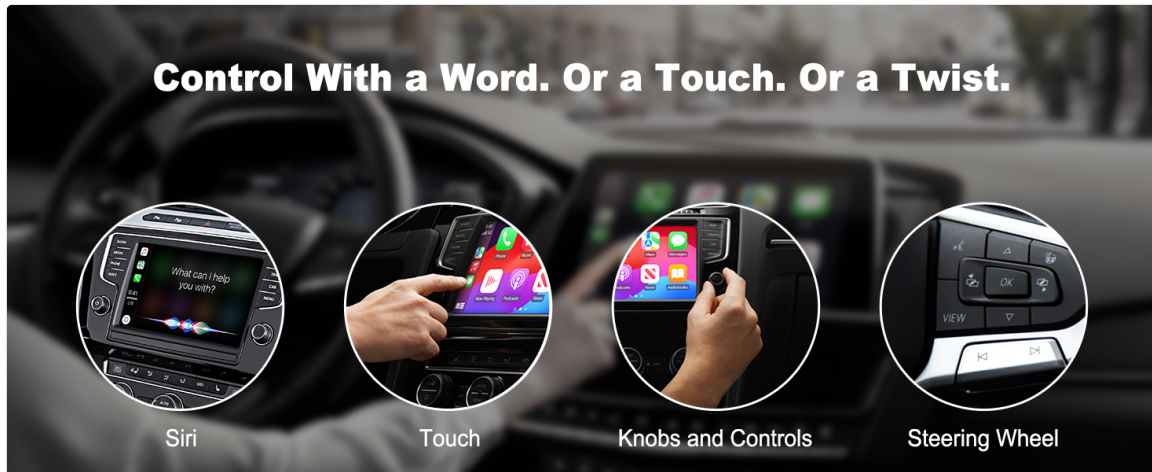


Image: Control methods for CarPlay.

CarPlay Features:

- **Navigation:** Access maps and get directions through your preferred navigation apps.
- **Music & Audio:** Play music, podcasts, and audiobooks from your iPhone apps with high-fidelity audio.
- **Communication:** Make and receive calls, send messages, and access your contacts.

Your browser does not support the video tag.

Video: Demonstration of voice control for hands-free operation.

6. FIRMWARE UPDATE (MAINTENANCE)

The ANYFAR A4 Pro supports Over-The-Air (OTA) firmware updates to ensure optimal performance and compatibility. To update the firmware:

1. **Power the Adapter:** Plug the adapter into a stable power supply source, such as a phone charger or a computer USB port. **Do not plug it into the car stereo to make an update.**
2. **Connect iPhone Wi-Fi:** Connect your iPhone's Wi-Fi to the adapter's Wi-Fi network. The default password is 88888888.
3. **Access Update Page:** Open a web browser on your iPhone and enter the IP address 192.168.2.1.
4. **Initiate Update:** Scroll down the page to find and click the update button.

Note: It is not suggested to update the firmware if the adapter is working correctly.

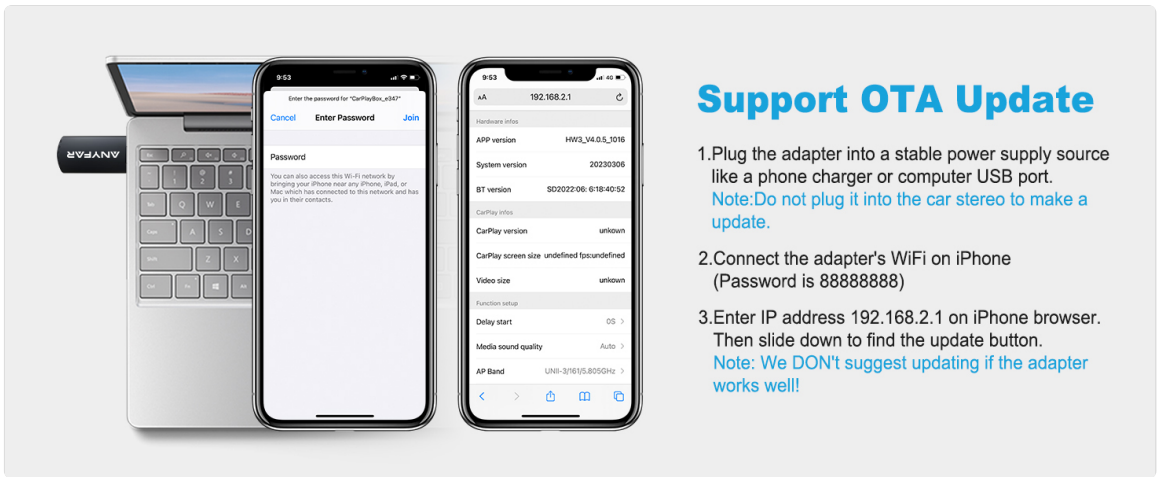


Image: Steps for performing an OTA firmware update.

7. TROUBLESHOOTING

- **Connectivity Issues:** If the adapter fails to connect, ensure your car has factory-installed wired CarPlay. Disconnect any existing Bluetooth connections between your iPhone and the car before pairing with the CarPlayBox. Restarting both your iPhone and the car's infotainment system can also resolve temporary issues.
- **Lag or Freezing:** The A4 Pro features a dual-core 5G chip for stable performance. If you experience lag or freezing, ensure your iPhone's software is up to date and there are no other devices interfering with the Wi-Fi or Bluetooth signals.
- **No Audio:** Check your car's audio source settings to ensure CarPlay is selected. Verify that your iPhone's volume is not muted and is set to an audible level.
- **CarPlay Not Launching:** After connecting the adapter and pairing via Bluetooth, ensure you select 'Use CarPlay' on your iPhone when prompted.

8. PRODUCT SPECIFICATIONS

Feature	Specification
Model Number	A4 Pro
Brand	ANYFAR
Product Dimensions	2.6 x 1 x 0.5 inches
Item Weight	1.76 ounces
Color	Black
Connector Type	USB Type C
Compatible Devices	iPhone, Car (with factory wired CarPlay)
Manufacturer	ANYFAR
Date First Available	January 4, 2024

9. WARRANTY AND SUPPORT

ANYFAR provides a 12-month product update period, ensuring ongoing support and improvements for your device.

For further assistance, technical support, or warranty inquiries, please contact ANYFAR customer service through the retailer where you purchased the product or visit the official ANYFAR website.