

Satsure 1Extender-2Chime White (Model 1T2)

Satsure Wireless Doorbell Extender User Manual

Model: 1Extender-2Chime White (Model 1T2)

1. INTRODUCTION

The Satsure Wireless Doorbell Extender system is designed to upgrade your existing hardwired doorbell into a wireless system, providing extended range and multiple chime options. This manual provides detailed instructions for the installation, operation, and maintenance of your new doorbell extender.

2. SAFETY INFORMATION

Please read and understand all safety instructions before installation and use. Failure to follow these instructions may result in electric shock, fire, or other hazards.

- Always disconnect power to your existing doorbell system at the circuit breaker before attempting any installation.
- Ensure the voltage of your existing doorbell system is within the specified range of 3-24V AC/DC for the transmitter.
- Do not expose the devices to rain or moisture.
- Do not disassemble or modify the devices. Refer all servicing to qualified personnel.
- Keep out of reach of children.

3. PACKAGE CONTENTS

Verify that all items are present in your package:

- 1 x Wireless Doorbell Extender (Transmitter)
- 2 x Plug-in Doorbell Receivers
- 1 x User Manual
- Necessary wiring for transmitter connection

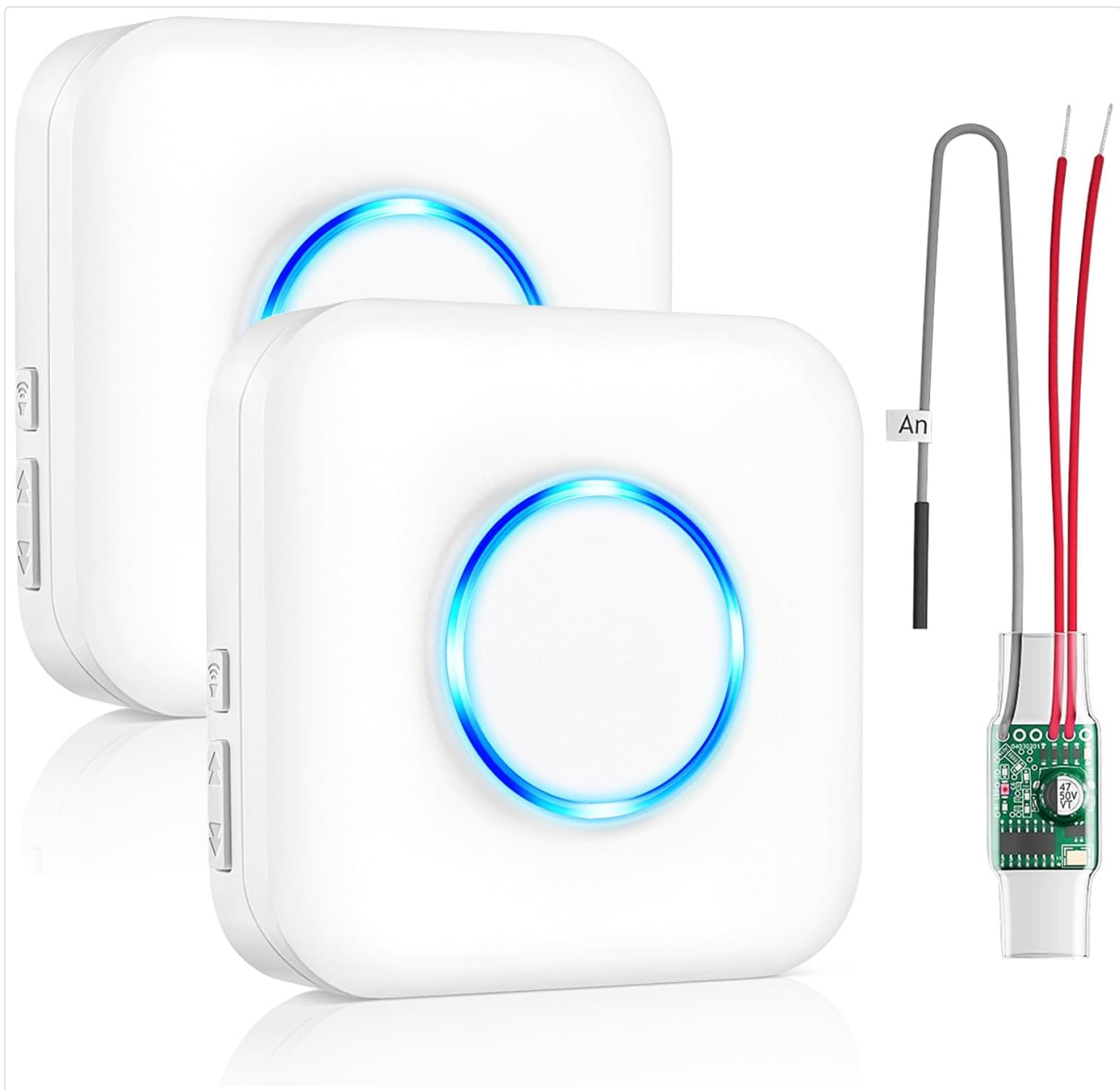


Image: Contents of the Satisure Wireless Doorbell Extender package, including two plug-in receivers, one wired transmitter, and connection wires.

4. PRODUCT OVERVIEW

The Satisure Wireless Doorbell Extender system consists of a wired transmitter and wireless plug-in receivers. The transmitter connects to your existing wired doorbell system, converting its signal into a wireless one. The receivers plug into standard wall outlets and chime when the doorbell is pressed.

Receiver Features:

- **LED Indicator:** A blue LED ring illuminates when the doorbell rings, providing a visual alert.
- **Volume Buttons:** Adjust the volume level (5 levels, 0-110dB).
- **Music Buttons:** Cycle through 58 available chimes.
- **Plug-in Design:** Easily plugs into any standard AC outlet.

Transmitter Features:

- **Compact Design:** Fits inside most existing doorbell chime boxes.
- **Wired Connection:** Connects directly to your existing doorbell wiring.

- **Signal Conversion:** Converts wired doorbell signal to a wireless radio frequency.

SATISURE DOORBELL SYSTEM RADIO CONVERTER

Easily and quickly integrates into existing doorbell systems

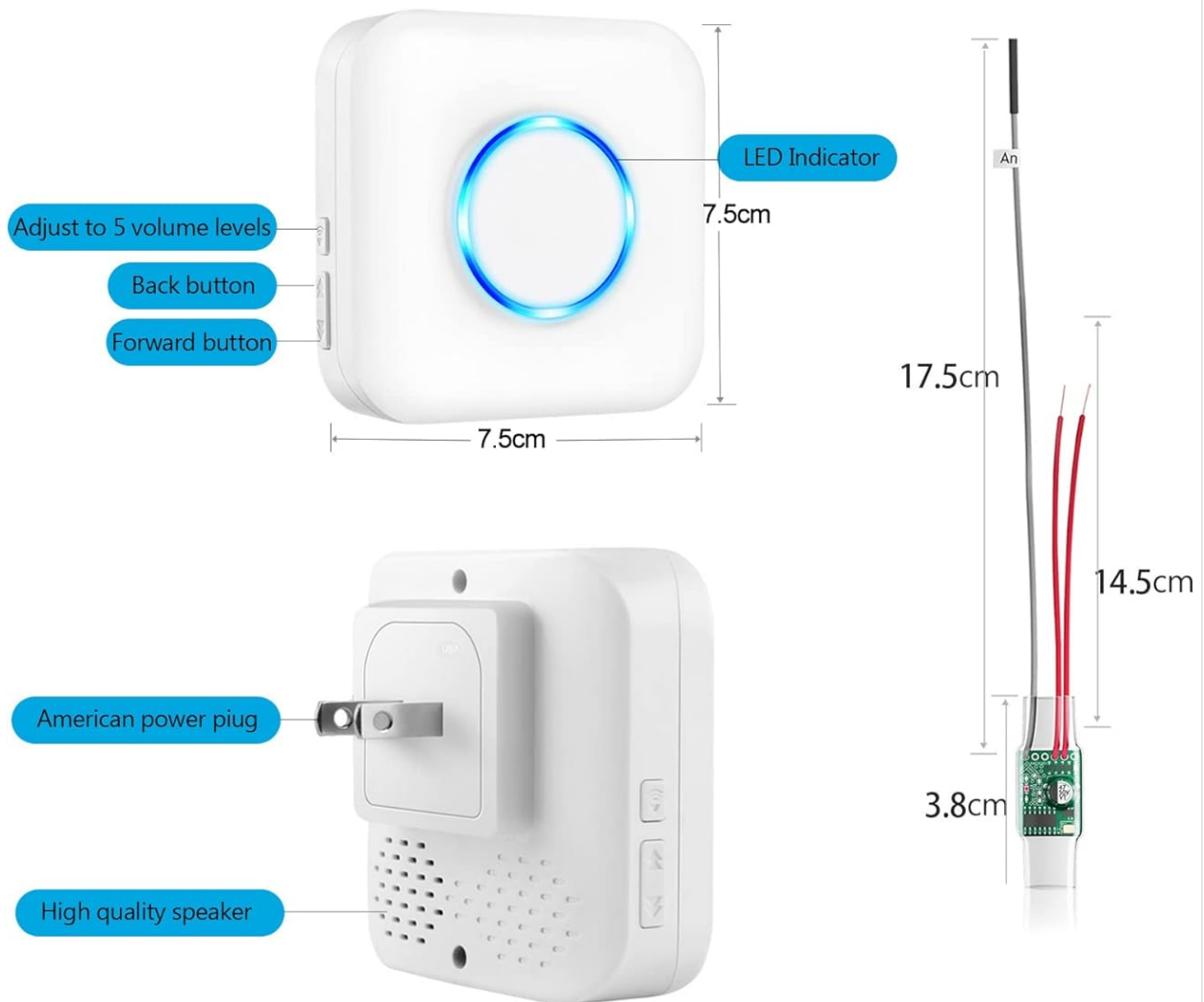


Image: Detailed diagram illustrating the dimensions and key features of both the Satisure doorbell receiver and the radio converter transmitter.

Plug-in Receiver With Blue LED Night Light



Image: The plug-in receiver features a blue LED night light, visible in both daytime and nighttime settings, providing a visual alert even in silent mode.

5. SETUP AND INSTALLATION

Follow these steps to install the Satisure Wireless Doorbell Extender:

1. **Disconnect Power:** Before starting, turn off the power to your existing doorbell system at the circuit breaker to prevent electric shock.
2. **Open Doorbell Cover:** Carefully open the cover of your existing wired doorbell chime box.
3. **Connect Transmitter:** Connect the wires from the Satisure wireless transmitter to the terminals of your existing doorbell control box. There is no distinction between positive (+) and negative (-) poles for this connection. Ensure the voltage is between 3-24V AC/DC.
4. **Secure Transmitter:** Once connected, secure the transmitter inside the doorbell chime box using tape or other suitable means to prevent it from moving or interfering with the chime mechanism.
5. **Restore Power:** Close the doorbell cover and restore power to your doorbell system at the circuit breaker.
6. **Verify Connection:** Press your existing wired doorbell button. The LED on the transmitter should light up, and if a receiver is already paired and plugged in, it should ring.

Doorbell Expander Connection Diagram

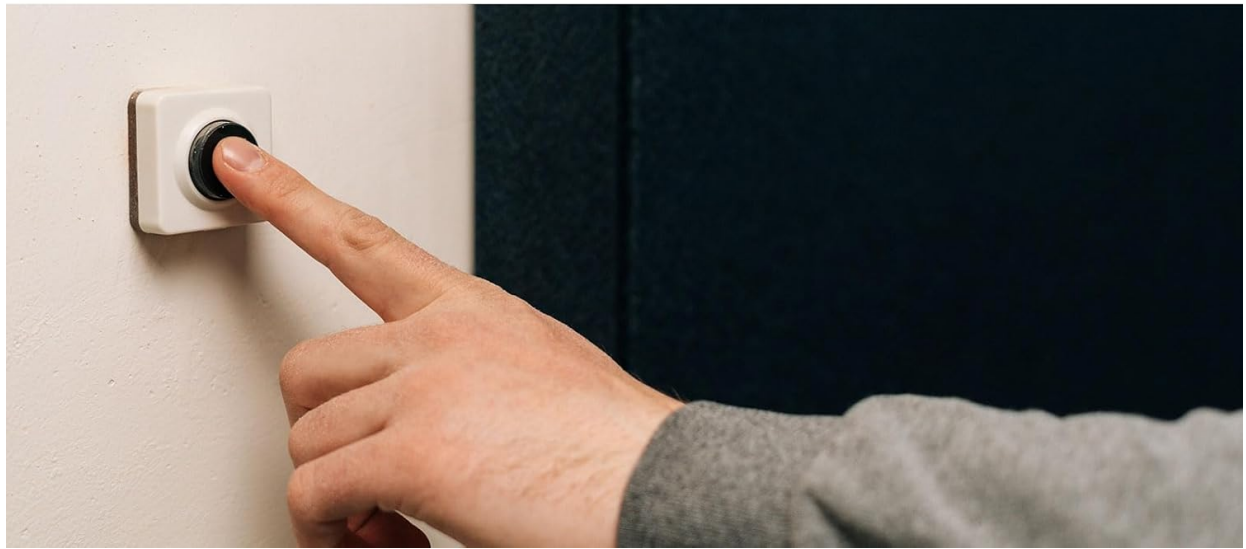
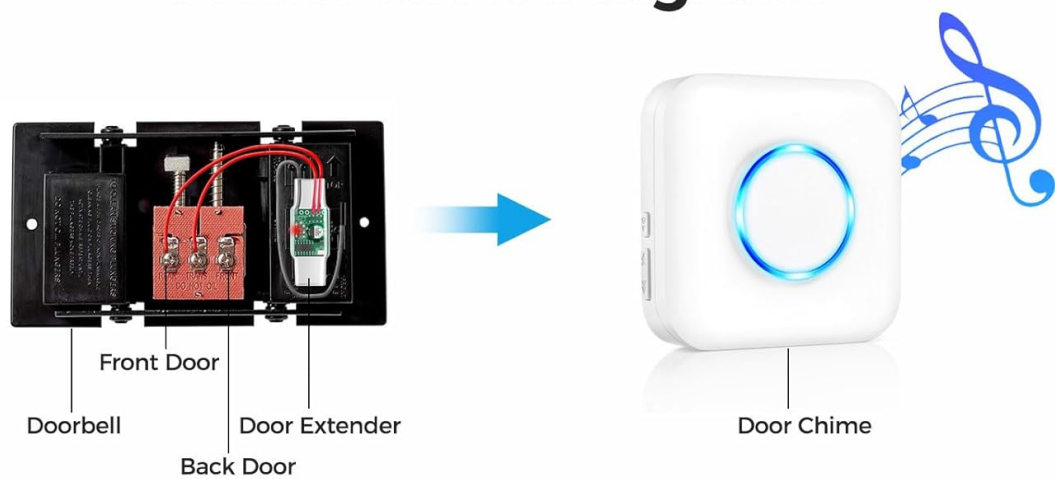
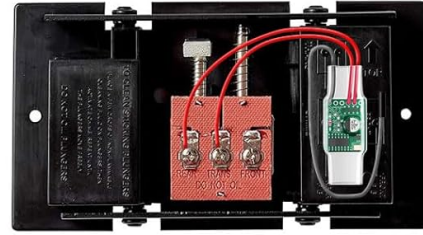


Image: Connection diagram for the doorbell expander, illustrating how the transmitter integrates with the existing wired doorbell system and communicates with the wireless door chime.

QUICK INSTALLATION



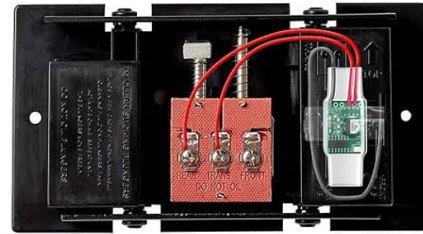
1. Open the doorbell cover.



2. The radio transmitter is connected to the doorbell control box (there is no distinction between + and - poles).



3. Turn on the circuit, the LED will light up and the receiver will ring, the connection is successful.



4. Secure the transmitter to the cover with tape to prevent it from loosening.

Image: A quick installation guide showing four steps: opening the doorbell cover, connecting the radio transmitter, verifying the LED light and receiver ring, and securing the transmitter.

6. OPERATING INSTRUCTIONS

6.1 Pairing the Extender with the Receiver

If your receiver is not already paired, follow these steps:

1. Ensure the extender is correctly connected to your wired doorbell and is working normally (i.e., the wired doorbell rings when pressed).
2. Plug the receiver into a standard wall outlet.
3. On the receiver, press and hold the **Volume button** for approximately 5-7 seconds until the receiver emits a