

## SSK SSM-F100

# SSK SSM-F100 4TB Personal Cloud Network Attached Storage User Manual

Model: SSM-F100

## INTRODUCTION

This manual provides detailed instructions for the setup, operation, and maintenance of your SSK SSM-F100 4TB Personal Cloud Network Attached Storage device. Please read this manual thoroughly before using the product to ensure proper functionality and data security.



Image: Front view of the SSK SSM-F100 Personal Cloud NAS device.

## PACKAGE CONTENTS

---

Verify that all items are present in the package:

- SSK SSM-F100 4TB Personal Cloud NAS Device (with 4TB Hard Drive included)
- Power Adapter
- Ethernet Cable
- USB 3.0 Cable
- Quick Start Guide (if applicable)

## PRODUCT OVERVIEW

The SSK SSM-F100 is a personal cloud storage solution designed for home and office use, offering 4TB of storage capacity. It supports both Network-Attached Storage (NAS) and Direct-Attached Storage (DAS) modes, allowing flexible data access and management.



Image: Rear and side view of the SSK SSM-F100, highlighting the LED indicator, Reset Button, USB 3.0 Host Port, 1000Mb RJ45 Network Port, DC12V/2A Power Interface, and USB-B 3.0 Port.

## Key Features:

- **4TB Storage Capacity:** Built-in 3.5-inch 4TB hard drive.

- **Remote Access:** Access and manage data from anywhere via PC or mobile phone.
- **Point-to-Point (P2P) Transmission:** Ensures data security during remote access.
- **Dual Working Modes:** NAS (Network-Attached Storage) and DAS (Direct-Attached Storage).
- **High-Speed Connectivity:** 1000M Ethernet port for NAS mode (10-30MB/s) and USB 3.0 for DAS mode.
- **Cross-Platform Compatibility:** Supports iOS, Android, Windows, and macOS with dedicated client software.
- **One-Click Backup:** Easy backup of photos, videos, and designated folders from mobile devices and PCs.
- **Automatic Sleep Mode:** Reduces power consumption and protects the drive.
- **Smart Management:** App/Software for multi-user sharing, Samba & DLNA Protocol support for LAN device interconnection.
- **Data Partitioning:** Private and Public areas for enhanced data security.

## SETUP INSTRUCTIONS

---

### 1. NAS (Network-Attached Storage) Mode Setup

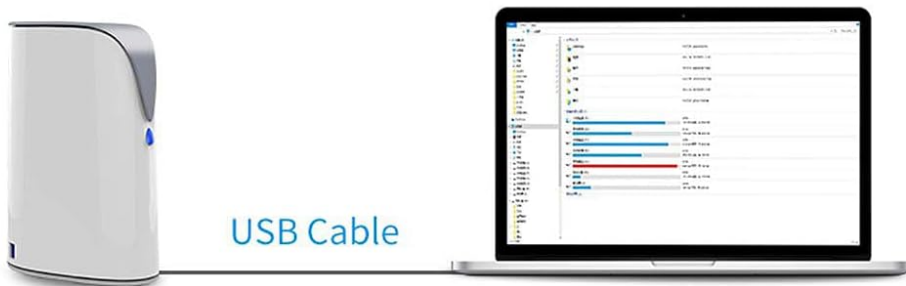
This mode allows you to access your storage device over a network, including remote access. The device does not have built-in Wi-Fi; it requires a wired connection to your router for network access.

1. **Connect Power:** Connect the power adapter to the DC12V/2A Power Interface on the device and plug it into a power outlet.
2. **Connect to Router:** Use the provided Ethernet cable to connect the 1000Mb RJ45 Network Port on the device to an available LAN port on your internet router.
3. **Power On:** The device will power on automatically. The LED indicator will show the device's status (refer to the "LED Indicator Status" section for details).
4. **Install Client Software:** Download and install the dedicated client software for your operating system (iOS, Android, Windows, macOS) from the official SSK website or app stores.
5. **Initial Configuration:** Follow the on-screen instructions within the client software to set up your personal cloud, create user accounts, and configure network settings.

**Note:** For wireless access from your devices (phone, tablet, laptop), ensure your devices are connected to the same Wi-Fi network as your router, which is wired to the SSK NAS device. The NAS device itself does not provide a Wi-Fi hotspot.

# Two Working Modes

## DAS(Direct-attached storage) Mode



## NAS(Network-attached Storage) Mode



**Noted:** In NAS Mode, SSK Hard Drive doesn't have own WiFi hotspot, it can not work without network connection

Image: Illustration of the two working modes: DAS (Direct-attached storage) via USB cable to a laptop, and NAS (Network-attached storage) via LAN cable to a router, allowing access from mobile and laptop devices.

## 2. DAS (Direct-Attached Storage) Mode Setup

This mode allows you to connect the storage device directly to a computer via USB for high-speed data transfer, functioning like an external hard drive.

1. **Connect Power:** Connect the power adapter to the DC12V/2A Power Interface on the device and plug it into a power outlet.
2. **Connect to Computer:** Use the provided USB 3.0 cable to connect the USB-B 3.0 Port on the device to a USB 3.0 port on your computer.
3. **Power On:** The device will power on automatically. The LED indicator will show the device's status.
4. **Access Data:** Your computer should recognize the device as an external drive. You can then access and manage files directly.

### Remote Access and Data Management

Once configured in NAS mode, you can access your data from anywhere using the SSK client software on your mobile phone, tablet, or computer.

- **Client Software:** Launch the SSK client application on your device. Log in with your credentials.
- **File Browsing:** Navigate through your stored files and folders.
- **Upload/Download:** Upload new files to your personal cloud or download existing files to your local device.
- **Sharing:** Share files or folders with other users configured on your device.



Image: Depiction of accessing and managing data remotely, whether at home or during travel, with data flowing from the NAS device to a mobile phone.

### One-Click Backup

The SSK SSM-F100 supports one-click backup for photos, videos, and specified folders from your mobile phone, tablet, or



PC.

- **Initiate Backup:** Within the SSK client software, locate the "Backup" or "One-Click Backup" option.
- **Select Data:** Choose the photos, videos, or folders you wish to back up.
- **Start Backup:** Confirm your selection to begin the backup process. The device will automatically synchronize and store the data.

# One Click Backup of Important Data On Mobile Phone/ Tablet /PC/iPad

Easily backup your photos, videos and folder.  
No longer to worry about losing cherish memories.



Image: A hand holding a smartphone with a backup interface, showing data being backed up to the SSK NAS device, with icons for one-click backup.

## Multi-System Compatibility and Sharing

The device is compatible with iOS, Android, Windows, and macOS. It also supports Samba and DLNA protocols for seamless sharing within your local area network (LAN).

- **Client Software:** Use the appropriate client software for your specific operating system.

- **LAN Sharing:** Devices connected to the same LAN (e.g., smart TVs, laptops, mobile phones) can access and share data from the SSK drive via Samba or DLNA.
- **Multi-User Access:** The smart app/software allows multiple users to share data simultaneously, with options for private and public areas to manage access permissions.

## Support Multi-system, Data Sharing Between Different OS

Support IOS, Android, Mac, Windows  
All have proprietary client software



Image: Various devices including laptops, tablets, and smartphones connected to the SSK NAS device, illustrating multi-system compatibility and data sharing.

## MAINTENANCE

### Automatic Sleep Mode

The SSK SSM-F100 features an automatic sleep mode. The device will intelligently switch between work and sleep states based on usage. This function helps to reduce power consumption and prolong the lifespan of the internal hard drive.

- No user intervention is required for this feature.
- Ensure the device has adequate ventilation to prevent overheating.



- Avoid exposing the device to extreme temperatures or humidity.

## Firmware Updates

Periodically check the official SSK website for firmware updates. Keeping your device's firmware up-to-date ensures optimal performance, security, and access to new features.

## TROUBLESHOOTING

---

### • Device Not Accessible in NAS Mode:

- Ensure the Ethernet cable is securely connected to both the NAS device and your router.
- Verify that your router has an active internet connection.
- Confirm that the NAS device is powered on and the LED indicator is showing the correct status for NAS mode.
- Restart both the NAS device and your router.
- Check your router's settings to ensure the NAS device is assigned an IP address and is not blocked by a firewall.

### • Device Not Recognized in DAS Mode:

- Ensure the USB 3.0 cable is securely connected to both the NAS device and your computer.
- Try connecting to a different USB port on your computer.
- Test with a different USB 3.0 cable if available.
- Verify the device is powered on.

### • Slow Network Transfer Speeds:

- Ensure you are using a Gigabit Ethernet connection (1000M) for optimal speeds.
- Check for network congestion on your router.
- Ensure your computer's network adapter is also Gigabit compatible.

### • Issues with Client Software Downloads:

- When downloading client software from a webpage, it is recommended to use browsers like **Internet Explorer (IE)** or **Safari** on a computer. Some users may experience issues with Google Chrome for these specific downloads.

### • LED Indicator Status:

- Refer to the product's quick start guide or the SSK client software for a detailed explanation of LED indicator colors and their corresponding working modes (NAS/DAS).

### • Forgot Password/Reset:

- Locate the reset button on the device (refer to the "Product Overview" image). Use a paperclip to press and hold the reset button for approximately 5-10 seconds to restore factory settings. **Warning: This will erase all data on the drive. Back up important data before performing a reset.**

## SPECIFICATIONS

Feature	Detail
Model Number	SSM-F100

Feature	Detail
Digital Storage Capacity	4 TB
Hard Drive Type	3.5-inch Mechanical Hard Disk
Hard Drive Interface	Serial ATA
Hard Drive Rotational Speed	7200 RPM
Connectivity Technology	Ethernet (1000Mb RJ45), USB (USB 3.0)
Special Features	NAS, Remote Access, One-Click Backup, Auto Sleep
Compatible Devices	Laptop, Smartphone, Tablet
Installation Type	External Hard Drive
Item Weight	3.22 pounds
Package Dimensions	9.61 x 7.68 x 5.55 inches
Manufacturer	SSK Corporation

## WARRANTY INFORMATION

Specific warranty details for the SSK SSM-F100 are typically provided with the product packaging or available on the official SSK website. Please refer to these resources for the most accurate and up-to-date warranty terms and conditions.



## CUSTOMER SUPPORT

For technical assistance, troubleshooting, or further inquiries regarding your SSK SSM-F100 Personal Cloud NAS, please visit the official SSK website or contact their customer support channels. Contact information is usually available on the product packaging or the manufacturer's website.

**SSK Official Website:** [SSK Store on Amazon](#) (for general brand information)



### Related Documents - SSM-F100

<div>  <div>SSK-DK100 User Manual</div></div>	<p><a href="#">SSK-DK100 Dual Bay HDD Docking Station User Manual</a></p> <p>User manual for the SSK-DK100 dual bay hard drive docking station, detailing its features, specifications, installation, mobile hard drive mode, and offline cloning capabilities.</p>
---	---

 <p>HDD Docking Station User Manual DK108</p>	<p><a href="#">SSK DK108 Dual Bay HDD Docking Station User Manual</a></p> <p>User manual for the SSK DK108 Dual Bay HDD Docking Station. Learn about its features, how to use it in Mobile Hard Disk and HUB modes, and find solutions to common problems. Supports 2.5/3.5 inch SATA HDDs/SSDs with USB 3.0 connectivity.</p>
 <p>Portable solid state flash drive User Manual SD301</p> <p><small>Before using the product please read this user manual carefully.</small></p>	<p><a href="#">SSK SD301 Portable Solid State Flash Drive User Manual</a></p> <p>User manual for the SSK SD301 portable solid state flash drive, detailing its package contents, product features, notes before use, storage capacity explanation, USB interface compatibility, connection and usage instructions, and quality assurance information.</p>
 <p>Portable solid state flash drive User Manual SD301</p> <p><small>Before using the product please read this user manual carefully.</small></p>	<p><a href="#">SSK SD301 Portable Solid State Flash Drive User Manual</a></p> <p>Discover the SSK SD301 Portable Solid State Flash Drive, a high-speed external SSD featuring dual USB-A and USB-C interfaces for broad compatibility across computers, tablets, and smartphones. This user manual provides essential information on its features, connection, usage, and storage capacity, ensuring optimal performance and data security.</p>
 <p>Portable solid state flash drive User Manual SD300</p> <p><small>Before using the product please read this user manual carefully.</small></p>	<p><a href="#">SSK SD300 Portable Solid State Flash Drive User Manual</a></p> <p>User manual for the SSK SD300 Portable Solid State Flash Drive, detailing product features, connection instructions, compatibility, and troubleshooting.</p>
 <p>Type-C All-in-One Adapter Product Manual SC211</p>	<p><a href="#">SSK SC211 Type-C All-in-One Adapter Product Manual</a></p> <p>Comprehensive user manual for the SSK SC211 Type-C All-in-One Adapter, detailing its specifications, interfaces, connection diagrams, and frequently asked questions. This adapter expands connectivity for laptops and other Type-C devices.</p>

## Problems and Solutions For Wireless Drive SSM-F100/F200

Thank you for purchasing SSK product!

Get free technical support and warranty:

SSK provides one-year warranty service. During the warranty period, if any failures and damages that comply with the warranty regulations, free replacement of the drives can be provided.

Note: Due to the hard disk properties, please be careful not to drop the hard disk on the ground or subject it to a strong impact. When copying large files, make sure that the power is sufficient to avoid damage due to power failure. The warranty is limited to the drive itself, and does not guarantee the data in the drive. Please timely backup your data stored on the hard disk.

Support Email: [support@ssk.cn](mailto:support@ssk.cn)

### Questions List

1. How to power on/off the device? (For SSM-F200)
2. What is the password when the Drive is connected wirelessly for the first time? (For SSM-F200)
3. How to restore factory settings if I forget the password?
4. Will the data be lost after restoring factory settings?
5. How to upgrade firmware?
6. How to set up the SSK Drive on mobile phone and have the internet access? (For SSM-F200)
7. When click the SSKCloud App, the APP prompts that "Can not connect to device, please click...". how to do? (For SSM-F200)

## [pdf] Guide Warranty Accessories

Microsoft Word Problems and solutions for SSM F100 F200 songjx User Guide SSK 2TB Portable External Wireless Hard Drive with Own Wi Fi Hotspot Personal Cloud Smart Storage Support Auto Backup Phone Tablet PC Laptop Remote Access Computers Accessories B1dVdRlXJtL m media amazon images I |||

Problems and Solutions For Wireless Drive **SSM-F100**/F200 Thank you for purchasing SSK product Get free technical support and warranty: SSK provides one-year warranty service. During the warranty period, if any failures and damages that comply with the warranty regulations, free replacement of the dr...

lang:en **score:41** filesize: 3.31 M page\_count: 24 document date: 2021-12-10



Report No.: ATE20162363  
Page 1 of 44

FCC TEST REPORT  
for  
SSK CORPORATION  
Smart Home Storage  
Model No.: SSM-F100  
FCC ID: 2AKKJ-SSM-F100

Prepared for Address : SSK CORPORATION,  
3F, M-10 centre of Hi-Tech Industrial district, Shenzhen,  
Guangdong, 518057, China  
Prepared by Address : Accurate Technology Co., Ltd.  
F1, Bldg. A4D, Changuang New Material Park, Kexuan Rd,  
Science & Industry Park, Nanshan District Shenzhen  
518057, P.R. China  
Tel: +86-755-26503290  
Fax: +86-755-26503396

Report No.: ATE20162363  
Date of Test : Nov. 05, 2016-Feb. 12, 2017  
Date of Report : Feb. 13, 2017

FCC ID: 2AKKJ-SSM-F100

ATE20162363-002-001-001

## [pdf] Accessories Test Report

Microsoft Word ATE20162363 FCC ID test report dell EMC Test Report SSK CORPORATION SSM F100 Smart Home Storage 2AKKJ 2AKKJSSMF100 ssm f100

Report No.: ATE20162363 Page 1 of 44 FCC TEST REPORT for SSK

CORPORATION. Smart Home Storage Model No.: **SSM-F100** FCC ID: 2AKKJ-**SSM-F100** Prepared for Address Prepared by Address : SSK CORPORATION. : 3F, M-10 centre of Hi-Tech Industrial district, Shenzhen, Guangdong, 518057, China : Accurate Techno...

lang:en **score:37** filesize: 8.28 M page\_count: 44 document date: 2017-12-24



775 Montague Expressway  
Milpitas, CA 95035  
Tel: 408-526-1188  
Fax: 408-526-1088  
Email: [TCB@siemic.com](mailto:TCB@siemic.com)

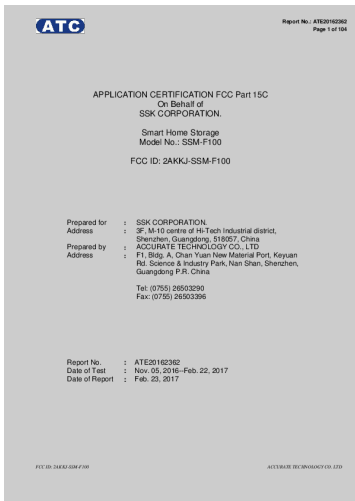
## Project and Product Certification Representative Authorization Letter

Reason for Amendment (current / obsolete)	Revision History		Approved Date
	From	To	
Initial Review (drawing)	1.0	1.0	Nov-15-2017
Revised working (drawing)	1.0	2.0	Dec-20-2017
Updated customer remarks (drawing)	2.0	3.0	Jan-10-2018
Updated active information (drawing)	3.0	4.0	May-10-2018
Added FCC ID (drawing)	4.0	5.0	May-10-2018

## [pdf] Agent Authorization

Microsoft Word SCS F18 Product Certification Representative Auth Letter TX dell Authorization SSK CORPORATION SSM F100 Smart Home Storage 2AKKJ 2AKKJSSMF100 ssm f100 775 Montague Expressway Milpitas, CA 95035 Tel: 408-526-1188 Fax: 408-526-1088 Email: [TCB@siemic.com](mailto:TCB@siemic.com) ... dy for certifying for the following project s : Product Description: Smart Home Storage Model name: **SSM-F100** FCC ID: 2AKKJ-**SSM-F100** Sincerely, Client s signature Client s name / titleLin Changwei / E...

lang:en **score:36** filesize: 71.83 K page\_count: 2 document date: 2017-02-22

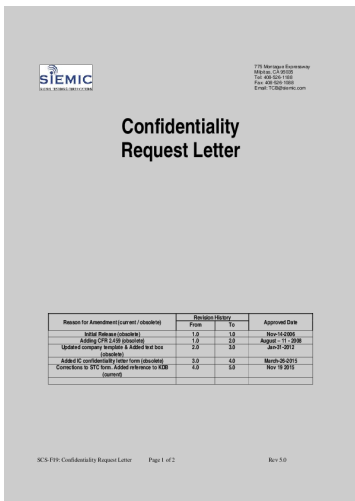


## [pdf] Test Report

Microsoft Word ATE20162362 FCC ID test report dell RF Test Report 1 SSK CORPORATION SSM F100 Smart Home Storage 2AKKJ 2AKKJSSMF100 ssm f100

Report No.: ATE20162362 Page 1 of 104 APPLICATION CERTIFICATION FCC Part 15C On Behalf of SSK CORPORATION. Smart Home Storage Model No.: **SSM-F100** FCC ID: 2AKKJ-**SSM-F100** Prepared for Address Prepared by Address : SSK CORPORATION. : 3F, M-10 centre of Hi-Tech Industrial district, Shenzhen, Guangdong...

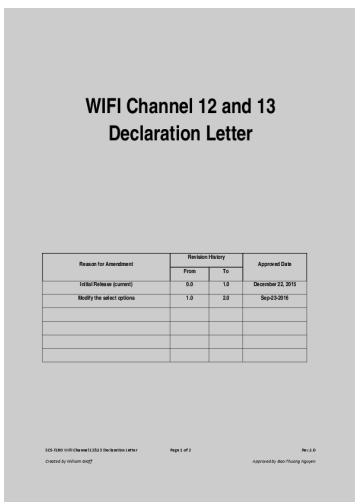
lang:en score:35 filesize: 7.86 M page\_count: 66 document date: 2017-12-24



## [pdf] Confidentiality Request Letter

Microsoft Word SCS F19 Confidentiality Request Letter Ver 5 dell LTC SSK CORPORATION SSM F100 Smart Home Storage 2AKKJ 2AKKJSSMF100 ssm f100

775 Montague Expressway Milpitas, CA 95035 Tel: 408-526-1188 Fax: 408-526-1088 Email: TCB siemic.com ... n 7435 Oakland Mills Road Columbia, MD Subject: Permanent Confidentiality Request for FCC ID: 2AKKJ-**SSM-F100** Pursuant to sections 0.457 and 0.459 of CFR 47, we respectfully request permanent confident... lang:en score:33 filesize: 75.9 K page\_count: 2 document date: 2017-02-22



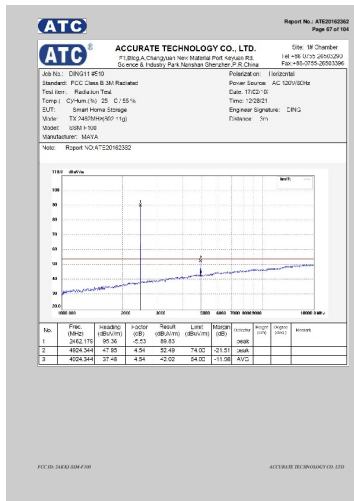
## [pdf] Declaration of Conformity Test Report

Microsoft Word SCS F190 WIFI Channel 12 13 Declaration Letter Rev2 0 dell DTS Ch 13 letter SSK CORPORATION SSM F100 Smart Home Storage 2AKKJ 2AKKJSSMF100 ssm f100

WIFI Channel 12 and 13 Declaration Letter Reason for Amendment Initial Release current Modify the ... are the equipment identified below with regards to Channel 12 and 13 capabilities for FCC ID: 2AKKJ-**SSM-F100** Declaration Product hardware does not have the capability to operate on Channel 12 and 13. ...

lang:en score:32 filesize: 81.05 K page\_count: 2 document date: 2017-02-28





## [pdf] Test Report

Microsoft Word ATE20162362 FCC ID test report dell RF Test Report 2 SSK CORPORATION SSM F100

Smart Home Storage 2AKKJ 2AKKJSSMF100 ssm f100

Report No.: ATE20162362 Page 67 of 104 FCC ID: 2AKKJ-**SSM-F100** ACCURATE

TECHNOLOGY CO. LTD Report No.: ATE20162362 Page 68 of 104 FCC ID:

2AKKJ-**SSM-F100** ACCURATE TECHNOLOGY CO. LTD Report No.: ATE20162362

Page 69 of 104 FCC ID: 2AKKJ-**SSM-F100** ACCURATE TECHNOLOGY CO. LTD

Report No.: ATE201...

lang:en score:30 filesize: 9.58 M page\_count: 38 document date: 2017-12-24

FCC ID : 2AKKJ-SSM-F100

1. RF EXPOSURE

1.1 The Requirement

System operating under the provisions of this section shall be operated in a manner that ensures that the public is not exposed to radio frequency energy levels in excess of the Commission's guidelines. See Section 15.247

1.2 Limit For Maximum Permissible Exposure (MPE)

Frequency Range (MHz)	Electric Field Strength (E) (V/m)	Magnetic Field Strength (H) (A/m)	Power Density (S) (mW/cm <sup>2</sup> )	Averaging Time (sec)
0.3-1.34	61.4	1.63	(100)*	30
1.34-30	1247	2.186	(100)*	30
30-300	27.1	0.073	0.5	30
300-1000			0.100	30
1000-100,000			1.0	30

F = Frequency in MHz, \* Plane-wave equivalent power density

1.3 MPE Calculation Method

Prediction of MPE limit at a given distance

Equation from page 18 of OET Bulletin 65, Edition 97-01

$S = P/Gd^2$

Where: S = power density  
P = power input to antenna  
G = power gain of the antenna in the direction of interest relative to an isotropic radiator  
R = distance to the center of radiation of the antenna

## [pdf] SAR Rating

Microsoft Word RF Exposure Report MPE dell SSK CORPORATION SSM F100 Smart Home Storage

2AKKJ 2AKKJSSMF100 ssm f100

FCC ID : 2AKKJ-**SSM-F100** 1. RF EXPOSURE 1.1.The Requirement System

operating under the provisions of this section shall be operated in a manner that

ensures that the public is not exposed to radio frequency energy levels in excess of

the Commission s guidelines. See Section 15.247 1.2.Limit For Ma...

lang:en score:27 filesize: 61.7 K page\_count: 3 document date: 2017-12-24

## Problems and Solutions For Wireless Drive SSM-F100/F200

Thank you for purchasing SSK product!

Get free technical support and warranty:

SSK provides one-year warranty service. During the warranty period, if any failures and damages that comply with the warranty regulations, free replacement of the drives can be provided.

Note: Due to the hard disk properties, please be careful not to drop the hard disk on the ground or subject it to a strong impact. When copying large files, make sure that the power is sufficient to avoid damage due to power failure. The warranty is limited to the drive itself, and does not guarantee the data in the drive. Please timely backup your data stored on the Hard disk.

Support Email: [support@ssk.cn](mailto:support@ssk.cn)

### 1. How to power on/off the device? (For SSM-F200)

Answer:

- ➊ Push the "POWER" button for 5-6 seconds until the Blue LED is on;
- ➋ Push the "Power" button for 2-3 seconds until the Yellow LED blinks.

We recommend you to click "remove safely" on APP before you shut it down in order to keep the data safe.

### 2. How to set up the SSK Drive on mobile phone and have the internet access? (For SSM-F200)

- ➊ Install the SSKcloud App on your Mobile phone and turn on the SSK Drive (If it can not power on or LED flash Red, please charge it first);

## [\[pdf\]](#) Installation Guide Frequently Asked Questions Warranty

Microsoft Word Wireless Hard Drive SSM F200 FAQs 202101 songjx SSK 1TB Personal Cloud External Portable NAS Storage with WiFi Hotspot for Travel Support Auto Backup Connect SD Card Reader Share Data iPhone iPad Tablet Smart Phone Laptop HDD FAQ Corporation B08V8VLC4K B08J488MZP B081CD34DP B07T3KD58D B1QuNW7djbS m media amazon images I |||

Problems and Solutions For Wireless Drive **SSM-F100**/F200 Thank you for purchasing SSK product Get free technical support and warranty: SSK provides one-year warranty service. During the warranty period, if any failures and damages that comply with the warranty regulations, free replacement of the dr...

lang:en score:23 filesize: 2.42 M page\_count: 17 document date: 2021-03-05

## [\[pdf\]](#) User Manual

20160804 F100 User Manual SSK CORPORATION SSK Smart Home Storage 2AKKJ

2AKKJSSMF100 ssm f100

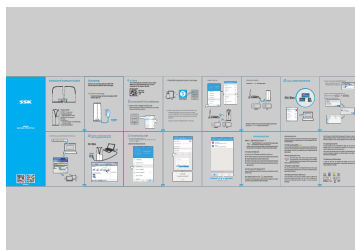
=OXKRKYIUTTKIZOUT OYOZZNKYZUXGMKH\_=KH9 OZGHRKLUXGRRJK OIKY  
UTTKIZYZUXGMKZU6 H\_ZNK OXK.OMNYVKKJ.\*\*SUJK 991 RU J  
LZKXIUTTKIZOTMZUYQIRU J OLONUZYVUZ\_U SOMNZLOTJZNGZ\_U  
XSUHORKJK OIKYIGTTUZ  
GIIKYYZUOTZKXTKZ:NKXKGYUTLUXZNOYOYZNGZZNK YZUXGMKYYQIRU  
JJUKYTUZIUTTKIZZUK ZKXTGR TKZ UXQ =G\_YZUIUT...

lang:i-klingson score:21 filesize: 2.23 M page\_count: 4 document date: 2017-02-24

## [\[pdf\]](#) Product Photos

Microsoft Word 2AKKJ SSM F100 External photos dell Photos SSK CORPORATION Smart Home Storage 2AKKJSSMF100 ssm f100  
External Photos ...

lang:i-klingson score:18 filesize: 220.43 K page\_count: 4 document date: 2017-02-22





#### [\[pdf\]](#) Label

Microsoft Word Label and label location dell Location SSK CORPORATION SSM F100 Smart Home Storage 2AKKJ 2AKKJSSMF100 ssm f100

Label and label location ...

lang:i-kl Klingon **score:18** filesize: 151.86 K page\_count: 1 document date: 2017-02-28

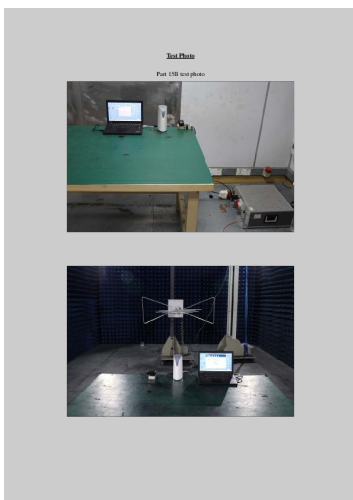


#### [\[pdf\]](#) Product Photos Teardown

Microsoft Word 2AKKJ SSM F100 internal photo dell Internal Photos SSK CORPORATION Smart Home Storage 2AKKJSSMF100 ssm f100

Internal Photos Antenna 1 Antenna 2 ...

lang:i-kl Klingon **score:18** filesize: 330.88 K page\_count: 4 document date: 2017-02-22



#### [\[pdf\]](#)

Microsoft Word 2AKKJ SSM F100 Test photo dell RF Set up Photos SSK CORPORATION Smart Home Storage 2AKKJSSMF100 ssm f100

Test Photo Part 15B test photo Part 15C test photo ...

lang:i-kl Klingon **score:17** filesize: 251.2 K page\_count: 3 document date: 2017-02-22