



Manuals.plus /

› LEDIARY /

› LEDIARY 42 Inch Chandelier Ceiling Fan with Lights and Remote - Instruction Manual

LEDIARY f384470f-a39d-45ac-bc7a-928e6ff337a5

LEDIARY 42 Inch Chandelier Ceiling Fan with Lights and Remote

Model: f384470f-a39d-45ac-bc7a-928e6ff337a5

Brand: LEDIARY

INTRODUCTION

This manual provides detailed instructions for the installation, operation, and maintenance of your LEDIARY 42 Inch Chandelier Ceiling Fan. Please read this manual thoroughly before installation and use to ensure proper function and safety. Keep this manual for future reference.

SAFETY INFORMATION

Always follow basic safety precautions when installing and operating electrical appliances to reduce the risk of fire, electric shock, and personal injury.

- Ensure the power is turned off at the circuit breaker before installation or maintenance.
- All electrical wiring must be performed by a qualified electrician and conform to local codes and regulations.
- The mounting structure must be capable of supporting the weight of the fan (approximately 22.9 pounds).
- Do not bend the blade holders during installation, balancing, or cleaning.
- Keep hands clear of the fan blades when the fan is operating.
- Do not use the fan with a dimmer switch not specifically designed for ceiling fans.

PACKAGE CONTENTS

Verify that all components are present before beginning installation.



Image Description: A visual representation of all parts included in the package. This includes the canopy cover, two downrod options (4 and 8 inches), a coupling cover, a crystal stand, a lamp shade, the main motor host, an LED light panel, a remote control, a receiver, and 40 individual crystal strings.

- 1 x Canopy Cover
- 2 x Downrod (4"/8")
- 1 x Coupling Cover
- 1 x Crystal Stand
- 1 x Lamp Shade
- 1 x Motor Host
- 1 x LED Light Panel
- 1 x Remote Control (batteries included)
- 1 x Receiver
- 40 x Crystal String

SETUP AND INSTALLATION

Follow these steps for proper installation of your ceiling fan. Professional installation is recommended.

1. **Prepare the LED Light Board:** Connect the LED light board to the motor host.
2. **Secure the Lampshade:** Fix the lampshade to the fan assembly using screws.
3. **Install the Downrod:** Insert the chosen downrod into the mounting bracket.
4. **Insert the Receiver:** Place the receiver into the mounting bracket.
5. **Attach Crystal Strings:** Hook the longest crystal bead string into the middle of the frame, then attach the remaining crystal strings.



Image Description: A sequential diagram illustrating the five main steps for assembling the ceiling fan. It shows connecting the LED light board, securing the lampshade, installing the downrod, inserting the receiver, and finally, attaching the crystal strings.

Mounting Considerations

- The fan is designed for flush mount installation.
- Two downrod options (4" and 8") are provided for adjustable height.
- Adaptable for sloped ceilings up to 15 degrees.



Product Size

2 Downrod Options



22.4"
(Short Downrod)

/

26.4"
(Long Downrod)



17.3"

42"

Sloped Ceiling
Adaptable



≤15°

Room Size:
100~144 sqft



Image Description: This image displays the fan's dimensions, including its 42-inch diameter and height with both 4-inch and 8-inch downrod options. It also illustrates how the fan can be installed on sloped ceilings (up to 15 degrees) and suggests a suitable room size of 100-144 square feet.

OPERATING INSTRUCTIONS

Your LEDIARY ceiling fan can be controlled via the included remote control or a compatible smartphone application.

Remote Control and App Functions

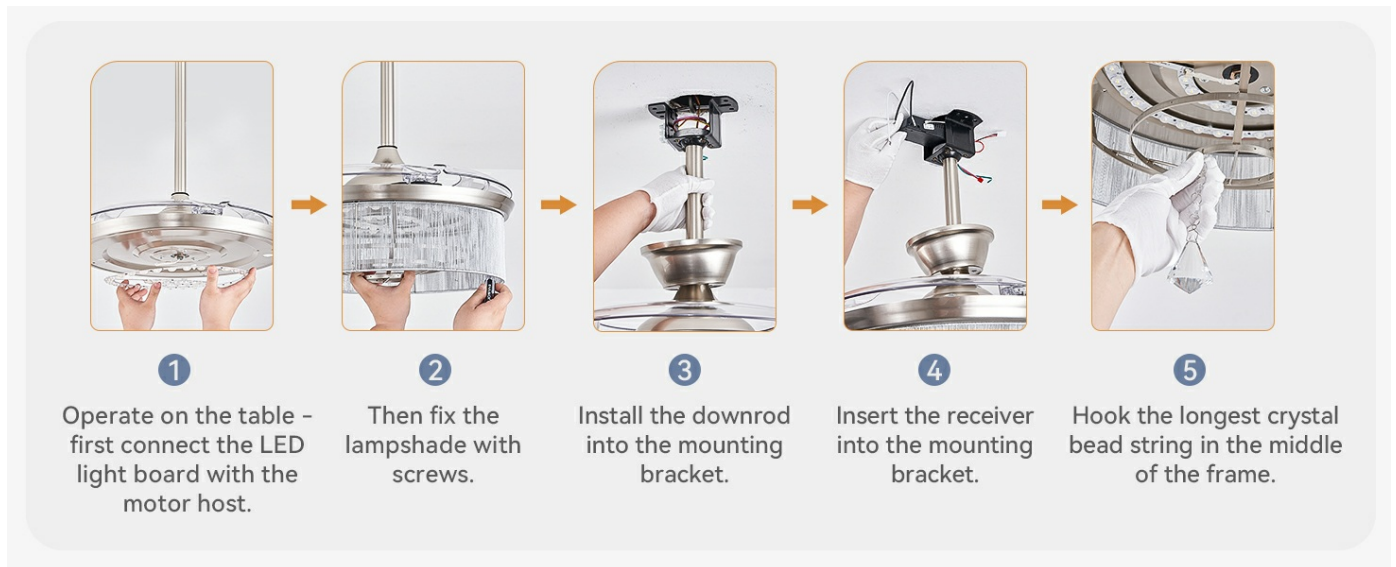


Image Description: This image illustrates both the physical remote control and a smartphone application interface used to operate the fan. Key functions highlighted include 6 fan speeds, adjustable brightness, timer settings, color temperature control, and a reverse function.

- **Fan Speeds:** Select from 6 available fan speeds for optimal airflow.
- **Brightness Adjustment:** Adjust the LED lighting brightness from 10% to 100%.
- **Color Temperature Control:** Change the light color temperature between Warm White (3000K), Cool White (4500K), and Clear White (6000K).
- **Timer Setting:** Set the fan to turn off automatically after a specified duration (e.g., 1H, 2H, 4H).
- **Reverse Function:** Utilize the reversible DC motor for seasonal comfort.
- **Night Light:** Activate a low-level light setting for nighttime use.



Adjustable LED lights



3000K | Warm White

4500K | Cool White

6000K | Clear White



Color Temperature Changeable

☾ 10%

100% ☀



Brightness Adjustable

Image Description: This visual shows the fan's lighting capabilities, displaying three distinct color temperatures: 3000K (Warm White), 4500K (Cool White), and 6000K (Clear White). Below these examples, a slider indicates the adjustable brightness range from 10% to 100%.

Reversible Motor Function

The fan features a reversible DC motor to optimize air circulation for different seasons.

- **Summer Mode (Downdraft):** Blades rotate counter-clockwise to create a cooling downdraft.
- **Winter Mode (Updraft):** Blades rotate clockwise to create an updraft, circulating warm air near the ceiling.



Cool in Summer & Warm in Winter through Reversible Air Circulation



Image Description: This image visually explains the reversible motor function. On the left, 'Summer Mode' shows the fan creating a

downward airflow for cooling. On the right, 'Winter Mode' depicts the fan generating an upward airflow to circulate warm air.

Retractable Blades

The fan's transparent blades automatically retract and become invisible when the fan is turned off, and extend when the fan is in operation.



42 Inch Retractable Ceiling Fan

Fan OFF



Fan ON



Secure Top-Sucking Disk



3 Retractable Fan Blades

Image Description: A comparison image showing the fan in two states: 'Fan OFF' where the transparent blades are retracted and concealed, and 'Fan ON' where the blades are extended for operation.

MAINTENANCE

Regular maintenance ensures the longevity and optimal performance of your ceiling fan.

- **Cleaning:** Turn off the power before cleaning. Use a soft, damp cloth to wipe down the fan housing and blades. Do not use abrasive cleaners or solvents.
- **Crystal Care:** Gently wipe crystals with a soft, lint-free cloth.
- **Tighten Fasteners:** Periodically check and tighten all screws and fasteners to ensure secure operation.

TROUBLESHOOTING

If you encounter issues with your fan, refer to the following common problems and solutions.

Problem	Possible Cause	Solution
Fan does not start	No power to the fan; Loose wire connections; Remote control battery low.	Check circuit breaker; Verify all wire connections are secure; Replace remote control batteries.
Fan makes noise	Loose screws; Unbalanced blades; Motor hum.	Tighten all screws; Ensure blades are balanced; Motor hum is normal for DC motors, but should be minimal (under 30dB).
Light does not work	Loose wire connection; LED panel issue.	Check light wiring connections; Contact customer support if LED panel is faulty.
Remote control not working	Low battery; Remote not paired.	Replace batteries (Zinc Carbon); Refer to remote pairing instructions (if applicable).

If problems persist after attempting these solutions, please contact LEDIARY customer support.

SPECIFICATIONS

Feature	Detail
Brand	LEDIARY
Model Number	f384470f-a39d-45ac-bc7a-928e6ff337a5
Product Dimensions	42"L x 42"W x 26.4"H
Item Weight	22.9 pounds
Material	Acrylonitrile Butadiene Styrene, Crystal, Iron
Color	Brush Nickel
Installation Type	Flush Mount
Power Source	DC
Motor Efficiency	30W
Light Source Type	LED
LED Wattage	40W
Light Color Temperature	3000K (Warm), 4500K (Cool), 6000K (Clear)
Brightness	Adjustable (10%-100%)
Control Method	Remote Control, APP Control
Fan Speeds	6
Noise Level	Under 30dB
Special Features	Adjustable Height, Color Changing, Crystal, Dimmable, Timer, Retractable Blades, Reversible Motor
Assembly Required	Yes
Batteries for Remote	Zinc Carbon (Included)

WARRANTY AND SUPPORT

LEDIARY offers a 2-year warranty for this product. If you encounter any issues or require technical assistance, please contact LEDIARY customer support.

Your satisfaction is our priority. For support, please refer to the contact information provided with your purchase or visit the official LEDIARY website.