

## Geek Smart L-F501

# Geek Smart Door Lock User Manual

Model: L-F501 | Brand: Geek Smart

Keyless Entry Fingerprint Deadbolt with Keypad and App Control

## 1. INTRODUCTION

This manual provides comprehensive instructions for the installation, operation, and maintenance of your Geek Smart L-F501 Smart Door Lock. This advanced deadbolt offers multiple secure entry methods, including fingerprint recognition, anti-peep access codes, mobile app control, IC cards, and traditional mechanical keys. Designed for convenience and security, it features a durable, weatherproof construction suitable for various environments.

## 2. PRODUCT FEATURES

- **5-in-1 Unlocking Methods:** Unlock your door using Fingerprint (up to 110 unique prints), Anti-peep Access Codes, Mobile App, IC Card, or Mechanical Key.
- **Advanced Fingerprint Recognition:** Equipped with an upgraded 508 DPI fingerprint sensor for over 98% recognition rate within 0.3 seconds.
- **Smart App Control:** Configure and manage fingerprints, passcodes, and users directly from the app. View unlock logs for enhanced security monitoring.
- **Remote Access Capability:** When paired with a TTLock gateway (sold separately), the smart deadbolt can be unlocked remotely and integrates with Amazon Alexa and Google Home for voice control.
- **Secure Access Codes:** Create up to 250 permanent or temporary access codes for family or guests. Features anti-peep technology to prevent code snooping.
- **Automatic Locking:** Enhance security with auto-lock and one-touch locking features.
- **Durable and Weatherproof:** IP65 weatherproof rating ensures reliable operation in most weather conditions. Constructed from zinc alloy for enhanced durability and anti-theft protection.
- **Easy Installation:** Designed for quick installation within 15 minutes using only a screwdriver.
- **Emergency Power:** Powered by 4 AA batteries (not included) with a Type-C USB port for emergency charging.



Figure 2.1: Overview of the Geek Smart L-F501 Smart Door Lock and its components, including the keypad, fingerprint sensor, IC cards, and mechanical keys.



## GEEK 501 SMART ELECTRONIC DEADBOLT

Create a more smarter and convenient life



Fingerprint Unlock



Key Unlock



AES128 Encryption



APP Control



RF Tag



Easy Installation



Figure 2.2: Key features of the Geek Smart 501 Electronic Deadbolt, highlighting its multiple unlocking methods and security enhancements.

# STARTING IN LOW TEMPERATURE

IP65 Waterproof and Anti-Fog



Figure 2.3: The Geek Smart L-F501 lock's IP65 weatherproof rating, showing its resilience in low temperatures and against moisture.

## INSTALLATION STEP DIAGRAM

Please refer to our manual and installation video before installation



Installation manual



Geek Smart card



1. Put the single latch into the corresponding slot and fix it with screws.



2. The square bar passes through the hole of the single latch, securing the front handle.



3. Use a hexagonal wrench to loosen the screws of the rear cover, take off the rear cover, and fix the rear cover after inserting one end of the power cable through the center hole of the rear handle.



4. Plug in the power cord.



5. Fasten the back cover plate and tighten the screw to fix it, and install 4pcs batteries.

Figure 2.4: The robust zinc alloy construction of the Geek Smart Deadbolt, emphasizing its fireproof, water-resistant, anti-vandal, and anti-theft characteristics.

## 3. INSTALLATION GUIDE

Please follow these steps carefully for proper installation. A screwdriver is the only tool required.

### 3.1. Prepare for Installation

Ensure your door meets the required dimensions for the deadbolt. Refer to the detailed installation dimensions image below.

## DETAILED INSTALLATION DIMENSIONS



Figure 3.1: Detailed dimensions for door preparation, including measurements for the latch, exterior panel, and interior panel.

### 3.2. Install the Latch

Insert the single latch into the corresponding slot on the door edge and secure it with the provided screws (Screw A). Ensure it is flush with the door edge.

Your browser does not support the video tag.

Video 3.1: Geek Smart 501 Installation Guide. This video provides a comprehensive visual walkthrough of the installation process for the L-F501 smart door lock, including latch installation.

### 3.3. Install Exterior Handle and Mounting Plate

Make sure the square rod horizontally passes through the latch. Feed the IC cable through the door hole. Attach the exterior handle, ensuring the square rod and cable are correctly aligned. Then, install the interior mounting plate using Screw B, aligning it with the screw holes of the interior panel.

## LEFT AND RIGHT DOOR INSTALLATION GUIDE

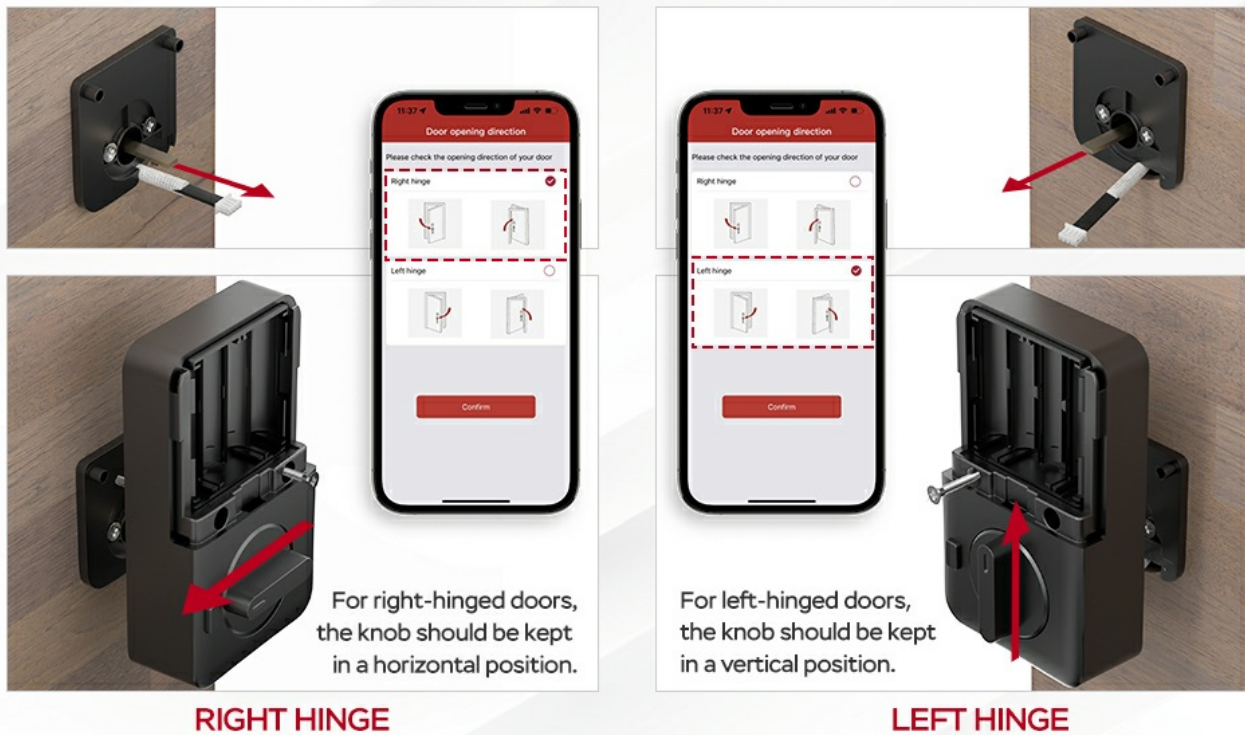


Figure 3.2: Step-by-step diagram illustrating the installation of the latch, exterior handle, and mounting plate.

### 3.4. Connect the IC Cable and Install Interior Panel

Connect the IC cable from the exterior handle to the interior panel. Ensure the connection is secure. Before fully tightening, adjust the rotary module on the interior panel according to your door's opening direction (left or right hinge). Finally, install the interior panel and tighten all screws.

## FITS ALL KINDS OF DOOR HANDLES



Figure 3.3: Guide for adjusting the interior panel's rotary module based on whether your door is left-hinged or right-hinged.

### 3.5. Install Batteries

Open the battery cover on the interior panel. Insert 4 AA batteries (not included), ensuring correct polarity (+/-). Close the battery cover securely.

Your browser does not support the video tag.

Video 3.2: Geek 501 Smart Deadbolt Installation. This video demonstrates the full installation process, including battery insertion and final checks.

## 4. OPERATING INSTRUCTIONS

### 4.1. Unlocking with Fingerprint

Place your registered finger on the fingerprint sensor. The lock will unlock if the fingerprint is recognized. You can register up to 110 fingerprints via the mobile app.

### 4.2. Unlocking with Passcode

Enter your registered passcode on the keypad. For enhanced security, you can use anti-peep codes by entering random digits before or after your actual passcode. The lock will unlock upon correct entry.

#### SECURE ANTI-PEEP CODE

Add random numbers to prevent password snooping



84562 453892 47605

Correct Password

---Random Digits---

Figure 4.1: Demonstrating the use of anti-peep codes for secure passcode entry.

### 4.3. Unlocking with IC Card

Tap your registered IC card against the designated area on the lock's exterior panel. The lock will unlock automatically.

### 4.4. Unlocking with Mechanical Key

In case of emergency or battery depletion, you can use the provided mechanical key. The keyhole is hidden under the rotating cover on the front of the lock. Rotate the cover to reveal the keyhole, insert the key, and turn to unlock.

### 4.5. Automatic Locking

The lock is set to automatically lock after a short period (default is 5 seconds) once unlocked. This feature can be customized or disabled via the mobile app.

## 5. MOBILE APP SETUP AND FEATURES

---

The Geek Smart app allows for comprehensive control and management of your smart lock. Download the TTLock app from your device's app store.

### 5.1. Pairing the Lock with the App

Enable Bluetooth on your smartphone. Open the TTLock app and follow the on-screen instructions to add a new device. Ensure you are close to the lock during the pairing process. You may need to press any key on the lock's keypad to wake it up for discovery.

### 5.2. Managing Users and Access

- **Add Fingerprints:** Register new fingerprints for users directly through the app.
- **Set Passcodes:** Create permanent, timed, one-time, or custom passcodes.
- **Register IC Cards:** Add new IC cards for quick access.
- **View Unlock Records:** Monitor who enters and exits your property with detailed logs.

# APP REMOTE WIRELESS UNLOCK

Make our life smarter by connecting with APP



Figure 5.1: The mobile app interface for remote wireless unlocking and managing various lock functions.

## 5.3. Voice Control Integration (with Gateway)

For voice control via Amazon Alexa or Google Home, a Tuya gateway (sold separately) is required. Once connected, you can use voice commands to lock or unlock your door.

## CONTROL WITH YOUR VOICE



**Alexa, unlock the door.**



Figure 5.2: Voice control functionality with Amazon Alexa and Google Assistant when connected via a gateway.

# THE ONLY ZINC ALLOY SMART DEADBOLT

The main body of GeekSmart Deadbolt is made of Zinc Alloy

Heaviest mass

Solid shape

Hard material



Fireproof



Water resistant



Anti-Vandal



Anti-Theft



Figure 5.3: Connectivity diagram illustrating how the lock integrates with smart home systems via a WiFi gateway.

## 6. MAINTENANCE

### 6.1. Battery Replacement

The lock is powered by 4 AA batteries. When the battery level is low, the lock will provide an audible warning. Replace all four batteries promptly to ensure continuous operation. Always use new, high-quality alkaline AA batteries.

### 6.2. Emergency Power

If the batteries completely drain, you can use a Type-C USB cable to provide emergency power to the lock. Connect the cable to the Type-C port located under the rotating cover on the exterior panel. This will provide enough power to unlock the door using a registered method or the mechanical key.

### 6.3. Cleaning

Clean the lock's exterior surfaces with a soft, damp cloth. Avoid using abrasive cleaners or solvents that could damage the finish or electronic components. Regularly wipe the fingerprint sensor to ensure optimal performance.

## 7. TROUBLESHOOTING

- **Lock not responding:** Check battery levels. If low, replace batteries or use emergency Type-C power.
- **Fingerprint not recognized:** Ensure your finger is clean and dry. Try repositioning your finger. Re-register your fingerprint via the app if issues persist.
- **Passcode not working:** Double-check the entered code. Ensure anti-peep digits are correctly used. Verify the passcode's validity period in the app (for temporary/timed codes).
- **App connectivity issues:** Ensure Bluetooth is enabled on your phone and you are within range of the lock. Restart the app or your phone. If using a gateway, check its internet connection.

- **Lock is unlocked but door won't open:** This may indicate an incorrect door opening direction setting. Adjust the rotary module on the interior panel as per the installation guide (Section 3.4) to match your door's hinge direction.
- **Need to reset to factory settings:** A factory reset can be performed via the app or by holding the reset button on the interior panel until you hear a voice prompt, then entering the default reset password (000 + unlock button). Note that this will erase all user data.

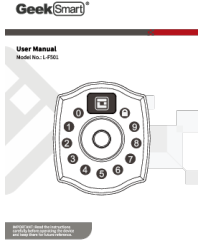
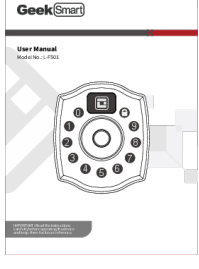

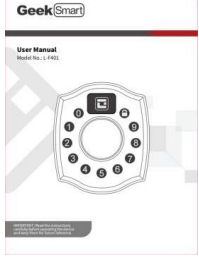
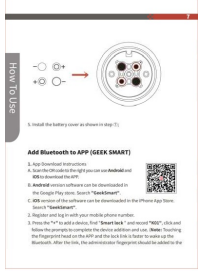

## 8. SPECIFICATIONS

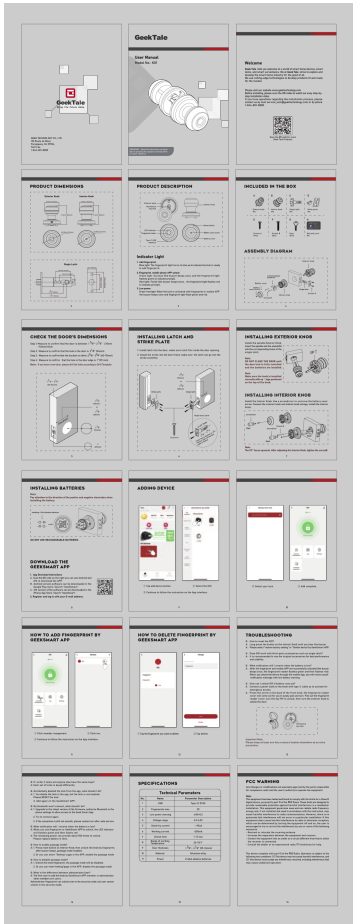
Feature	Detail
Brand	Geek Smart
Model Name	L-F501
Lock Type	Biometric, Deadbolt, Keypad
Unlocking Methods	Fingerprint, Passcode, App, IC Card, Mechanical Key
Fingerprint Capacity	Up to 110
Access Code Capacity	Up to 250
Material	Zinc Alloy
Item Dimensions (L x W x H)	2.76 x 1.18 x 5.11 inches
Item Weight	3.03 pounds
Weatherproof Rating	IP65
Power Source	4 AA Batteries (not included)
Emergency Power	Type-C USB Port
Connectivity Protocol	Bluetooth
Controller Type	Amazon Alexa (with gateway)

## 9. WARRANTY AND SUPPORT

Geek Smart provides dedicated customer service for their smart door locks. If you encounter any problems with installation or require technical assistance, please feel free to contact the Geek Smart Team. Refer to your product packaging or the official Geek Smart website for specific warranty details and contact information.



	<p><a href="#">Geek Smart L-F501 User Manual</a></p> <p>User manual for the Geek Smart L-F501 smart lock, covering features, operating instructions, troubleshooting, and specifications. Learn how to install, set up, and manage users via the app or keypad.</p>
	<p><a href="#">GeekSmart L-F501 Smart Lock User Manual</a></p> <p>Comprehensive user manual for the GeekSmart L-F501 smart lock, covering installation, operation, app integration, settings, and troubleshooting. Includes technical specifications and contact information.</p>
	<p><a href="#">Geek Smart L-B201 Smart Lock User Manual</a></p> <p>User manual for the Geek Smart L-B201 smart lock, covering installation, operation, specifications, and troubleshooting. Learn how to install, add fingerprints, and use passage mode.</p>
	<p><a href="#">Geek Smart L-F401 User Manual</a></p> <p>User manual for the Geek Smart L-F401 smart lock, covering installation, operation, app integration, settings, and troubleshooting. Includes product details, assembly instructions, and technical specifications.</p>
	<p><a href="#">GeekSmart K01 Fingerprint Lock User Manual</a></p> <p>Guide to setting up and using the GeekSmart K01 fingerprint smart lock, covering app integration, user management, and unlocking features.</p>
	<p><a href="#">GeekSmart L-B400 Smart Lock User Manual</a></p> <p>Comprehensive user manual for the GeekSmart L-B400 Smart Lock, covering installation, app operation, features, troubleshooting, and specifications. Learn how to set up fingerprints, passwords, eKeys, and manage access.</p>



[pdf] User Manual Instructions Dimension Guide

L F501 96x135mm 2021 12 28 User Manual Geek Tale K01 02 Smart Door Lock 3 Ways Security Fingerprint Mobile App Mechanical Key for Bedroom Apartment Home and Office Stainless Steel Silver Improvement C1TTJZ M8kL m media amazon images I |||

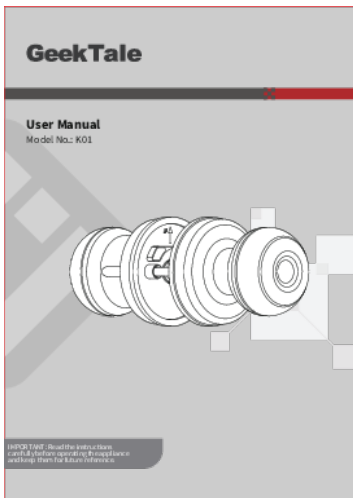
User Manual Model No.: K01 Welcome Geek Tale bids you welcome to a world of smart home devices, smart locks, and smart surveillance. We at Geek Tale strive to explore and develop the smart home industry for the good of all. We use cutting-edge technologies to develop products fit and ready for the ...

lang:en score:19 filesize: 6.67 M page\_count: 1 document date: 2022-11-21

[pdf] User Manual Instructions Specifications Dimension Guide Diagram

L F501 96x135mm 2021 12 28 K01 2022 8 16 v 1670640313 cdn shopifycdn net s files 1 0629 6767 7164 |||

K01 250g128g96X135mm User Manual Model No.: K01 IMPORTANTRead the instructions carefully before operating the appliance and keep them for future reference. Table Of Contents Features Specifications How To Use FCC Warning Geek Tale 2 5 6 17 Geek Tale service\_lock geektechnology.com Scan the QR... lang:en score:14 filesize: 9.18 M page\_count: 20 document date: 2022-08-16

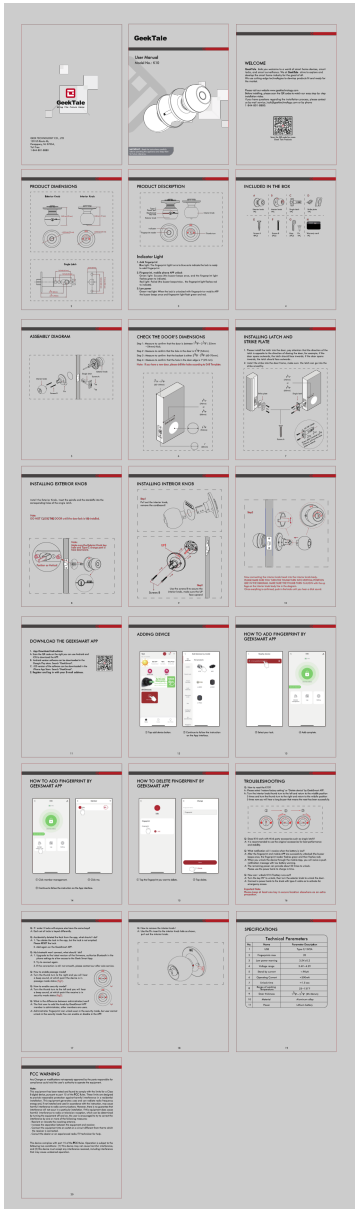


[pdf] User Manual Instructions Specifications Dimension Guide Diagram Catalog

L F501 96x135mm 2021 12 28 TIRAMISUBEST Fingerprint Door Lock Black Smart knob with App Control Great for Bedrooms Offices Hotels XYK01 01 The Home Depot 76d11691 6c28 46ee 911b a70ccb24f13e images thdstatic catalog Images 76 |||

User Manual Model No.: K01 IMPORTANTRead the instructions carefully before operating the appliance and keep them for future reference. Table Of Contents Features Specifications How To Use FCC Warning Geek Tale 2 5 6 17 Geek Tale Product description 2 Product description Product Dimensions ONE...

lang:en score:13 filesize: 9.06 M page\_count: 18 document date: 2023-02-08



[pdf] Catalog

GeeTale K10 2 96x135mm 2023 7 5 L F501 Lock Gateway Upgrade to the latest version of firmware authorize Bluetooth in phone settings allow access Geek Smart App 8cf88909 ca92 4249 88d6 be032884edc3 images thdstatic catalog Images 8c |||

...

lang:en score:11 filesize: 10.15 M page\_count: 1 document date: 2023-07-05