

[Manuals.plus](#) /

> [Tolifo](#) /

> Tolifo PT-176S LED Video Light Instruction Manual

Tolifo PT-176S

Tolifo PT-176S LED Video Light Instruction Manual

Model: PT-176S | Brand: Tolifo

INTRODUCTION

The Tolifo PT-176S is a versatile on-camera LED video light designed for various photography and videography applications. It features 176 ultra-bright LED bulbs, adjustable brightness, and comes with multiple color filters to customize lighting. This manual provides detailed instructions for setting up, operating, and maintaining your PT-176S video light.



Figure 1: Tolifo PT-176S LED Video Light and its accessories.

WHAT'S INCLUDED

Your Tolifo PT-176S package includes the following items:

- 1x PT-176S LED Video Light
- 1x Hot Shoe Mount
- 1x NP-F550 Battery (2200mAh)
- 1x Battery Charger
- 1x USB Cable
- 1x White Diffusion Filter
- 1x Orange Filter
- 1x Red Filter
- 1x Green Filter

- 1x Blue Filter
- 1x User Manual

What's Included?



PT-176S Video Light



5 Color Filters



Battery Charger



USB Cable



NP-F550 Battery



Universal Base



Product Manual

Figure 2: All components included in the Tolifo PT-176S package.

KEY FEATURES

- **11W LED Output:** Equipped with 176 ultra-bright LED bulbs, producing 11W of power and 1320LM luminous flux.
- **Color Temperature:** Default 5600K, adjustable to 3200K with the orange color filter.
- **Adjustable Brightness:** Stepless dimming from 10% to 100%, displayed on a digital screen.
- **Versatile Filters:** Includes white diffusion, orange, red, green, and blue filters for creative lighting effects.
- **Power Options:** Powered by an included NP-F550 battery or an optional DC power cable (not included).
- **Compact and Portable:** Lightweight design (0.39lb / 0.18kg) made from durable ABS plastic.

- **Mounting:** Standard hot shoe with a 1/4" hole for easy installation on cameras, tripods, or handles.



Figure 3: Overview of the PT-176S LED Video Light's key specifications.

SETUP

1. Battery Installation and Charging

The PT-176S uses an NP-F550 battery. Ensure the battery is fully charged before use.

1. Insert the NP-F550 battery into the battery compartment on the back of the light, ensuring correct polarity.
2. To charge the battery, connect the included battery charger to a USB power source using the provided USB cable. Insert the battery into the charger. The indicator light on the charger will show charging status.
3. Alternatively, the light can be powered directly using a DC power cable (not included) connected to the DC IN port.

2 Power Supply Options

Make it convenient for outdoor shooting



Figure 4: The PT-176S offers two power supply options: NP-F series battery or DC power adapter.

2. Mounting the Light

The PT-176S comes with a standard hot shoe mount for attachment to cameras, tripods, or other equipment.

1. Attach the hot shoe mount to the 1/4" screw hole at the bottom of the video light.
2. Slide the hot shoe mount into your camera's hot shoe or attach it to a tripod with a 1/4" screw.
3. Tighten the locking knob on the hot shoe mount to secure the light in place.

Product Display



Power Switch/
Brightness Adjustment

Digital Display

Standard 1/4" Hole

Air Vents

Battery Bay

DC Power
Socket



Figure 5: Product display with labeled parts, including the 1/4" hole for mounting.

Light-Weight & Portable

Lightweight and sturdy material helps you carry it easily and conveniently

0.18kg/0.39lb

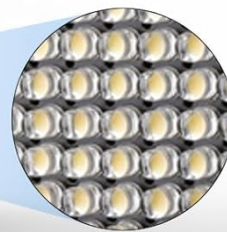
Net Weight

ABS Plastic

Shell Material



It can be installed on a camera a video recorder,a tripod or other equipments



176 Utrl-Bright LED Beads



Universal Base

Figure 6: The lightweight and portable design allows for easy installation on cameras, video recorders, tripods, or other equipment.

OPERATING INSTRUCTIONS

1. Power On/Off and Brightness Adjustment

The rear knob on the LED panel light controls both power and brightness.

1. To power on or off the light, press and hold the rear knob.
2. To adjust brightness, rotate the knob left (decrease) or right (increase). The brightness level (10% to 100%) will be displayed on the digital screen.

Your browser does not support the video tag.

Video 1: Demonstrates the power on/off function, brightness adjustment from 10% to 100%, and the use of color filters. This video also shows the cold shoe mount installation and the light being used for product photography.

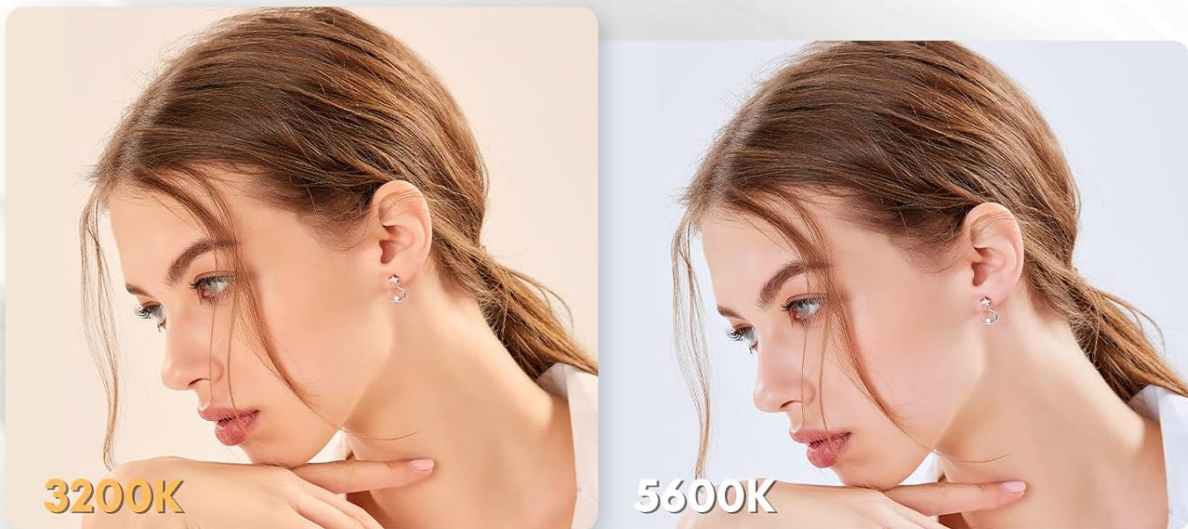
2. Using Color Filters

The PT-176S includes five color filters (white, orange, red, green, blue) to modify the light's color temperature and create specific moods.

1. To attach a filter, slide it into the designated slots on the front of the LED panel.
2. The white diffusion filter provides a softer, more even illumination, reducing harsh shadows.
3. The orange filter changes the color temperature from 5600K to 3200K, ideal for warmer lighting conditions.
4. Other colored filters (red, green, blue) can be used for creative effects or to match specific scene requirements.

Dimmable LED Video Light

After installing the color chip, it can reach a color temperature of 3200K



Adjustable Brightness

Stepless dimming, one-click adjustment of light brightness

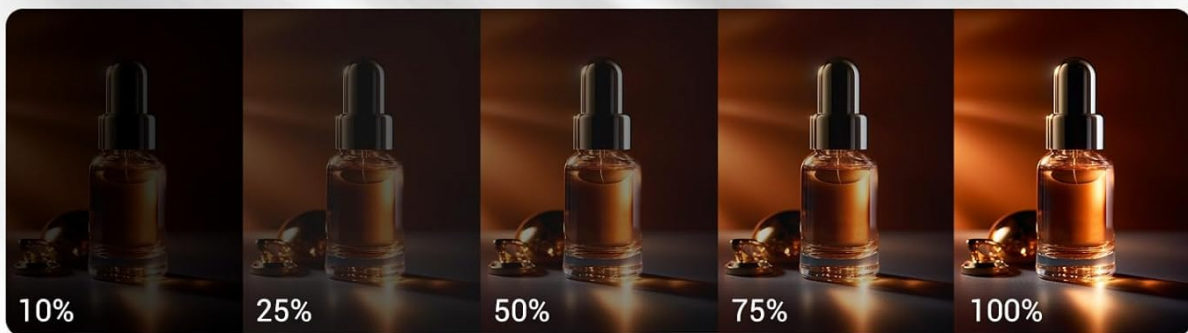
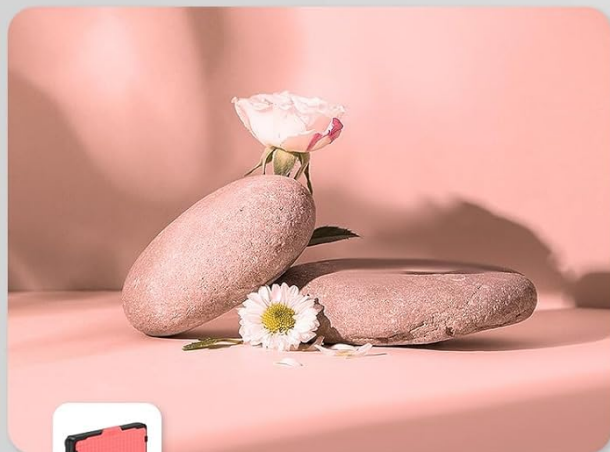


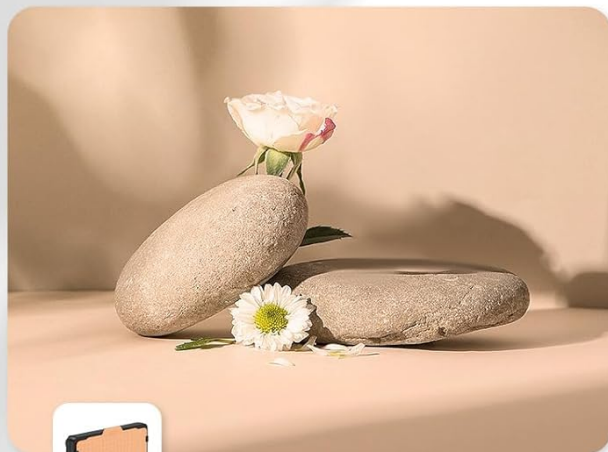
Figure 7: The light's color temperature can be adjusted to 3200K by installing the orange color filter.

Change Colors with Filters

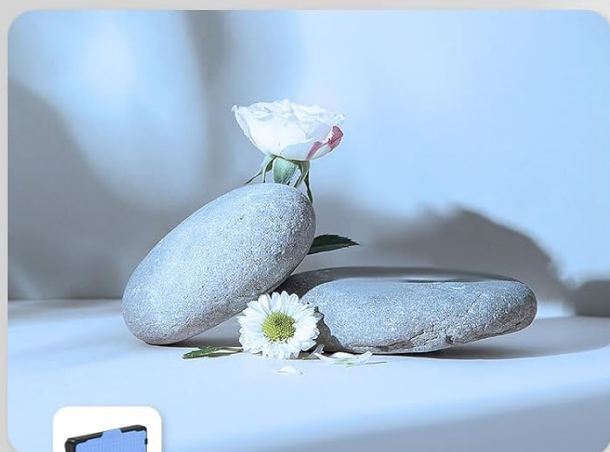
Insert the color filter for your need



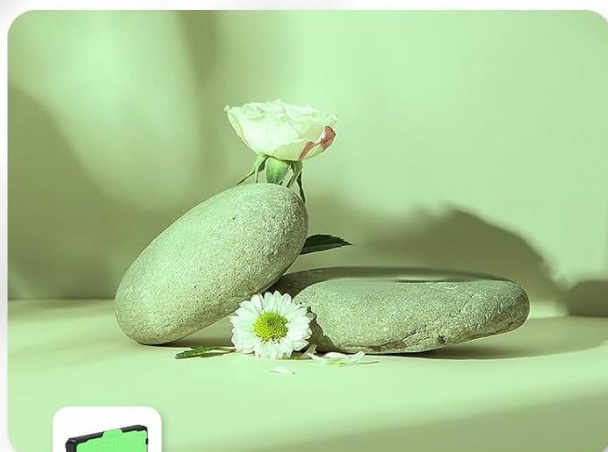
Red



Orange



Blue



Green

Figure 8: Various color filters allow for customization of lighting effects.

MAINTENANCE

- Keep the light clean by wiping it with a soft, dry cloth. Avoid using abrasive cleaners or solvents.
- Store the light and accessories in a dry, cool place away from direct sunlight and extreme temperatures.
- Ensure the battery is fully charged before long-term storage to maintain battery health.
- Regularly check the hot shoe mount and other connections for tightness and wear.



Figure 9: The light features air vents for efficient heat dissipation, contributing to its longevity.

TROUBLESHOOTING

- **Light not turning on:**
 - Ensure the battery is properly inserted and charged.
 - Verify that the power knob is pressed and held correctly to toggle the light.
 - If using DC power, ensure the adapter is correctly connected and providing sufficient power.
- **Light flickering or dim:**
 - Check battery charge level. A low battery can cause flickering or reduced brightness.
 - Ensure the brightness knob is set to the desired level.
- **Filters not fitting properly:**
 - Ensure filters are inserted into the correct slots and are not bent or damaged.

SPECIFICATIONS

Model	PT-176S
Power Output	11W
LED Bulbs	176 Ultra-Bright LEDs
Luminous Flux	1320LM
Color Temperature	5600K (3200K with Orange Filter)
Brightness Range	10% - 100%
Power Source	NP-F550/750/970 Battery (NP-F550 included) or DC 8.5V-17V (adapter not included)
Material	ABS Plastic

Item Weight	1.12 pounds (approx. 0.51 kg)
Package Dimensions	6.06 x 5.91 x 1.93 inches

WARRANTY AND SUPPORT

The Tolifo PT-176S LED Video Light comes with a one-year warranty. For any inquiries about your product, technical support, or warranty claims, please contact Tolifo customer service. Refer to the contact information provided with your purchase or visit the official Tolifo website.

You can also visit the Tolifo store on Amazon for more information: [Tolifo Amazon Store](#)