

[Manuals.plus](#) /

> [GuineaLoft](#) /

> GuineaLoft Model-E Acrylic Pet Cage Instruction Manual

GuineaLoft Model E

GuineaLoft Model-E Acrylic Pet Cage Instruction Manual

Model: **Model E** | Brand: **GuineaLoft**

[Instructions](#) [Operation](#) [Safety Information](#) [Maintenance](#) [Package Contents](#) [Specifications](#) [Assembly](#) [Troubleshooting](#) [Warranty & Support](#)

1. SAFETY INFORMATION

Please read all instructions carefully before assembling and using the GuineaLoft Model-E Acrylic Pet Cage. Keep this manual for future reference.

- Ensure all components are securely fastened during assembly to prevent injury to pets or users.
- This cage is designed for birds, guinea pigs, chinchillas, and other small animals that enjoy vertical and horizontal movement. **It is NOT suitable for hamsters, mice, rats, or gerbils.**
- Keep small parts away from children and pets during assembly.
- Place the cage on a stable, level surface to prevent tipping.
- Regularly inspect the cage for any damage or loose parts and address them immediately.

2. PACKAGE CONTENTS

Verify that all parts are present before beginning assembly.

DIY Expandable

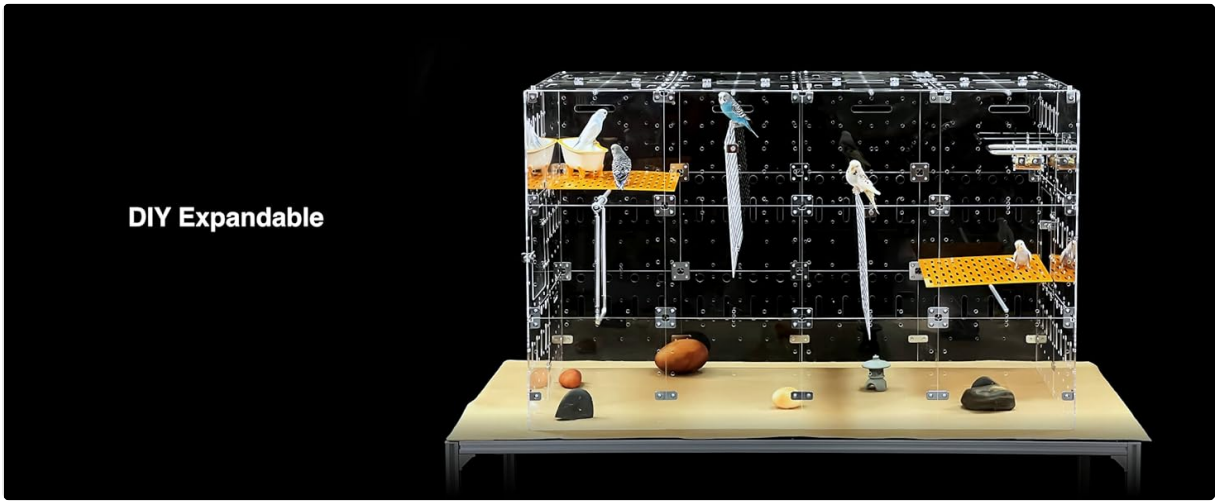


Image: GuineaLoft Model-E Cage with its packing list, showing the assembled cage and a list of included items.

- 1 Set of Model-E Cage (assembly required)
- 1 Piece of 2x1ft Disposable Bottom
- Assembly hardware (screws, hinges, door locks)
- Screwdriver for assembly

Note: Acrylic accessories shown in display images are NOT included with the base Model-E cage.

3. ASSEMBLY INSTRUCTIONS

Follow these steps to assemble your GuineaLoft Model-E Acrylic Pet Cage. It is recommended to watch the assembly video for visual guidance.

Your browser does not support the video tag.

Video: Detailed assembly guide for the GuineaLoft Model-E Acrylic Pet Cage.

1. Step 1: Peel Off Protection Film

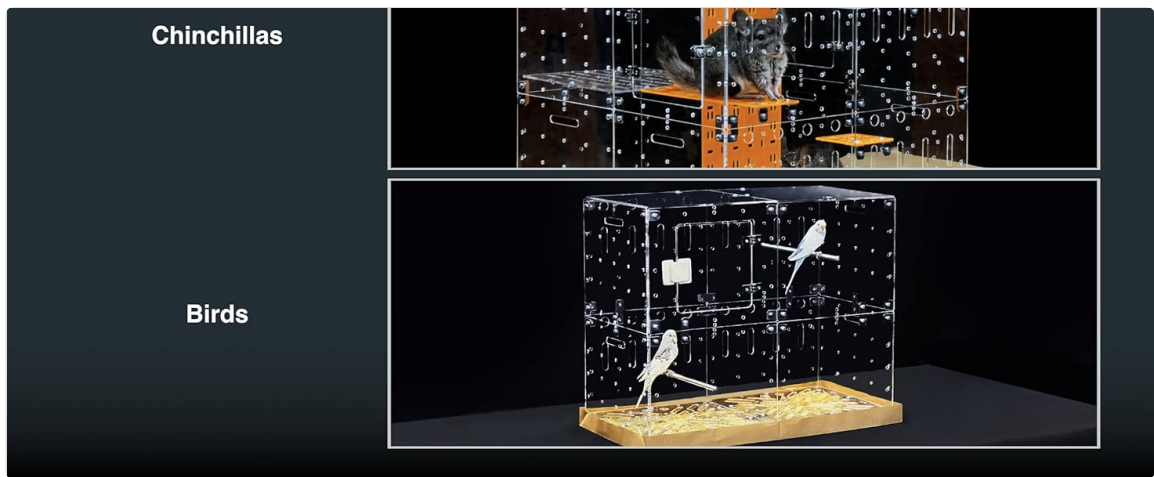
Carefully peel off the protective film from all acrylic panels before assembly. This ensures a clear view and prevents scratches during construction.



Image: A person peeling the protective film from an acrylic panel, revealing the clear surface underneath.

2. Step 2: Assemble Level 1 Panels

Screw the side panels (with handle slots), back panel (with function holes), and front clear panels together. Ensure screws are inserted from the outside-in for a flush finish.



Chinchillas

Birds

Image: Hands assembling the clear acrylic panels for the first level of the cage, using screws and a screwdriver.

3. Step 3: Prepare for Level 2 and Bottom

Install the necessary connectors and supports for the second level and the cage bottom. This involves securing additional screws and brackets.



Create Your Own Playground

Image: A person attaching brackets and connectors to the partially assembled cage, preparing for the next level and bottom panel.

4. Step 4: Attach the Bottom Panel

Align and connect the bottom panel to the first level, fastening it securely with screws. Ensure it is flush and stable.



DIY Connectable

Image: A person securing the bottom panel to the base of the acrylic cage using screws.

5. Step 5: Assemble Level 2 Panels

Similar to Level 1, screw the side panels (with handle slots), back clear panels, and the front door panel for Level 2. Ensure screws are inserted from the outside-in.

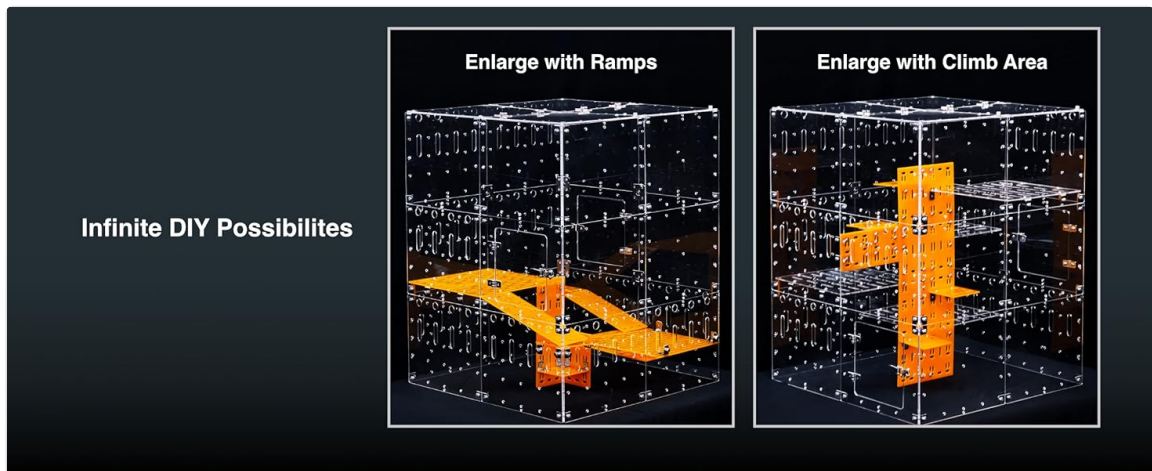


Image: A person assembling the panels for the second level of the cage, including a door panel.

6. Step 6: Install Doors and Locks

Attach hinges to the doors and then to the cage frame. Install the door locks by screwing them from the inside-out. Test door functionality and security.

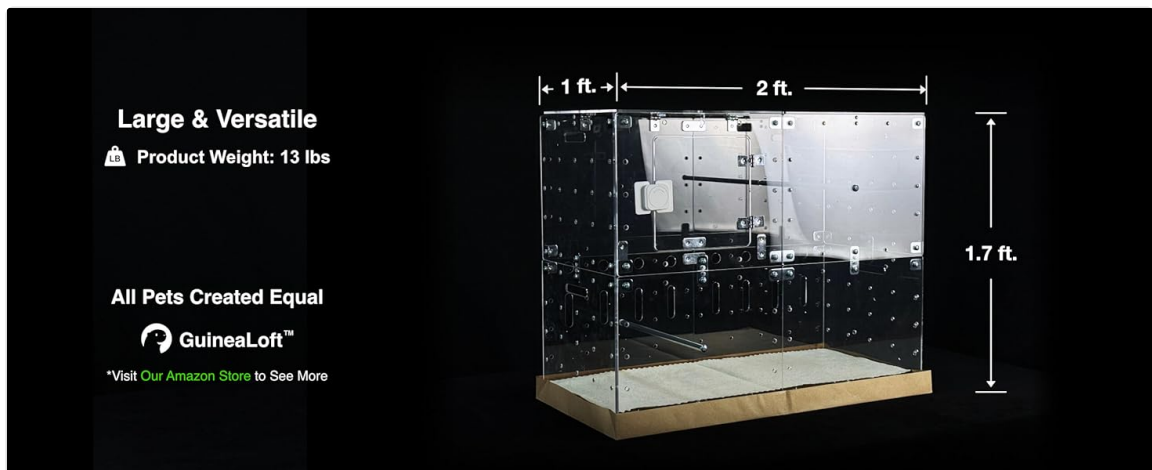


Image: Hands installing hinges and a door lock onto an acrylic door panel of the cage.

7. Step 7: Attach the Lid

Screw the hinges onto the lid panels and then attach the lid to the top of the cage frame. Ensure the lid opens and closes smoothly.

8. Step 8: Install Beams

Insert the provided beams into the designated slots. You can use two short beams or one long beam depending on your preference and pet's needs.

4. OPERATION

4.1 Pet Placement

The Model-E cage is suitable for birds, guinea pigs, chinchillas, and other small animals that benefit from

multi-level environments. Ensure your pet is compatible with the cage design and size.



Image: The GuineaLoft Model-E cage showcasing its multi-level design with a guinea pig, chinchilla, and bird, demonstrating its suitability for various small animals.

4.2 Expandability and Customization

The cage is designed to be expandable. You can add floors to increase height, add blocks to expand width, or connect multiple cages using connectors to create a larger, unified structure. Additional parts and accessories are available from the GuineaLoft store.

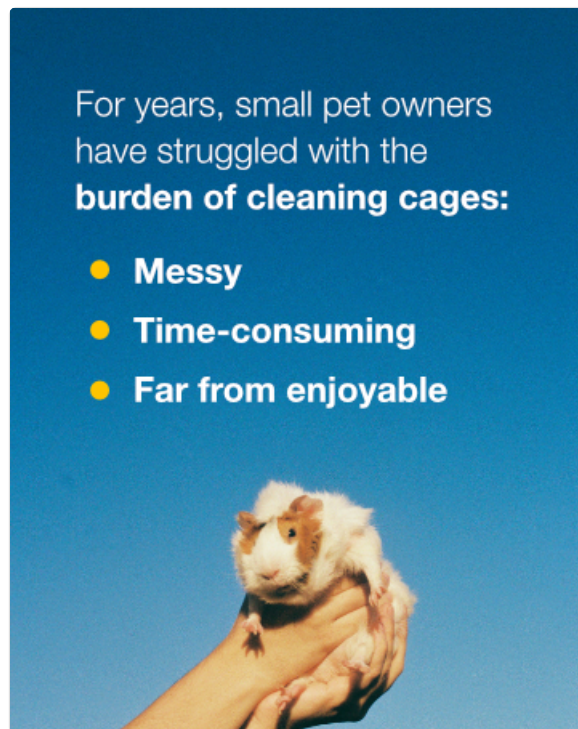


Image: An expanded GuineaLoft cage with multiple birds, illustrating its customizable and extendable design.

For birds, beam perches, bent pipe perches, wall perches, and climbing panel perches are available. For guinea pigs and chinchillas, DIY parts can be used to create play structures such as floors, ramps, perches, and plank roads. Black panels are also available for building dark chambers for resting.

4.3 Unobstructed View

The clear acrylic design provides an unobstructed view of your pets, allowing for easy observation of their activities and interactions.

4.4 Effortless Access

Doors and lids open with ease, providing convenient access for feeding, interaction, cleaning, and maintenance inside the cage.

5. MAINTENANCE

5.1 Cleaning the Cage Bottom

The disposable paper bottom simplifies cage cleaning. To clean, simply remove the used paper bottom and replace it with a fresh one. This helps maintain a fresh and hygienic environment for your pet.



Image: A person rolling up a used disposable paper bottom from the cage, demonstrating the ease of cleaning.

5.2 Cleaning Acrylic Panels

The acrylic walls naturally protect against kick-outs and splashes, keeping your surroundings clean. For cleaning the panels, use GuineaLoft disposable wet acrylic wipes. These wipes are designed to clean acrylic surfaces without scratching, ensuring a clear view of your pet companions.

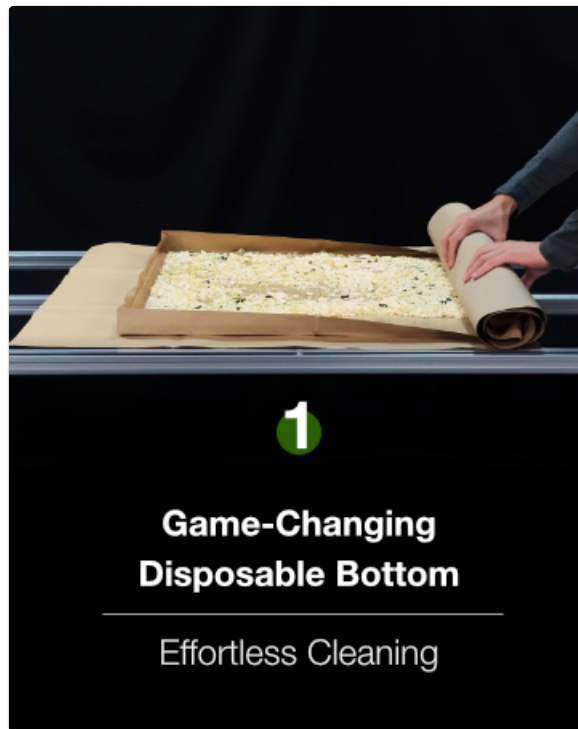


Image: A box of GuineaLoft Acrylic Wipes, with individual wipe packets, used for cleaning the clear acrylic panels of the cage.

Avoid using abrasive cleaners or harsh chemicals, as these can damage the acrylic material.

6. SPECIFICATIONS

Feature	Detail
Product Dimensions (L x W x H)	60.8L x 30.8W x 51H Centimetres (2 x 1 x 1.7 ft)
Item Weight	5.36 kg (11.8 lbs)
Material	Acrylic
Number of Levels	1 (expandable)
Number of Doors	3
Special Features	Adjustable, Durable, Lockable, Top Access, Ventilated
Target Species	Small animals (birds, guinea pigs, chinchillas)
Model Name	Model E

7. TROUBLESHOOTING

If you encounter any issues with your GuineaLoft Model-E cage, please refer to the following common solutions:

- **Loose Panels:** If panels feel loose, re-tighten all screws. Ensure the protective film was fully removed before assembly, as residual film can prevent a tight fit.
- **Difficulty with Doors/Lids:** Check that hinges are correctly aligned and screws are not overtightened, which can restrict movement. Ensure no debris is obstructing the door path.

- **Unstable Structure:** Verify that the cage is placed on a flat, stable surface. Double-check all connections and ensure all screws are fully tightened.
- **Scratches on Acrylic:** Minor scratches can sometimes be buffed out with specialized acrylic polish. For deeper scratches, replacement panels may be necessary. Always use non-abrasive cleaning materials.

For further assistance, please contact GuineaLoft customer support.

8. WARRANTY AND SUPPORT

GuineaLoft products are manufactured with quality and durability in mind. For specific warranty details, please refer to the warranty card included with your purchase or visit the official GuineaLoft website. For customer support, product inquiries, or to purchase additional accessories and parts, please visit the [GuineaLoft Store on Amazon](#) or contact our support team directly.