

[manuals.plus](#) /

› [Laser](#) /

› [Laser TWS Earbuds with LED Battery Display: True Wireless Stereo, Tap Controls, Ergonomic Design, Rechargeable Case User Manual](#)

## Laser EPS-LT10B-128

# Laser TWS Earbuds with LED Battery Display User Manual

Model: EPS-LT10B-128

## INTRODUCTION

---

Thank you for choosing the Laser TWS Earbuds. These true wireless stereo earbuds are designed to provide a high-fidelity audio experience with convenient features such as an LED battery display, intuitive tap controls, and an ergonomic design for comfortable, extended use. The included rechargeable case ensures your earbuds are always ready for use. This manual will guide you through the setup, operation, and maintenance of your new earbuds.



Image: The Laser TWS Earbuds, showcasing the charging case with its LED display and one earbud placed outside the case.

## PACKAGE CONTENTS

Ensure all items are present in the package:

- 1 x Pair of Laser TWS Earbuds
- 1 x Charging Case with Battery Display
- 1 x Type-C Charging Cable
- 1 x User Manual



Image: The retail packaging for the Laser TWS Earbuds, indicating contents and features.

## SETUP

### 1. Charging the Earbuds and Case

Before first use, fully charge the earbuds and the charging case. The LED display on the case indicates the battery level.

1. Connect the provided Type-C charging cable to the charging port on the case and a USB power source.
2. The LED display will show the charging progress. A full charge takes approximately 1 hour.
3. The earbuds charge automatically when placed inside the charging case. The case can recharge the earbuds up to 3 times on a single charge.

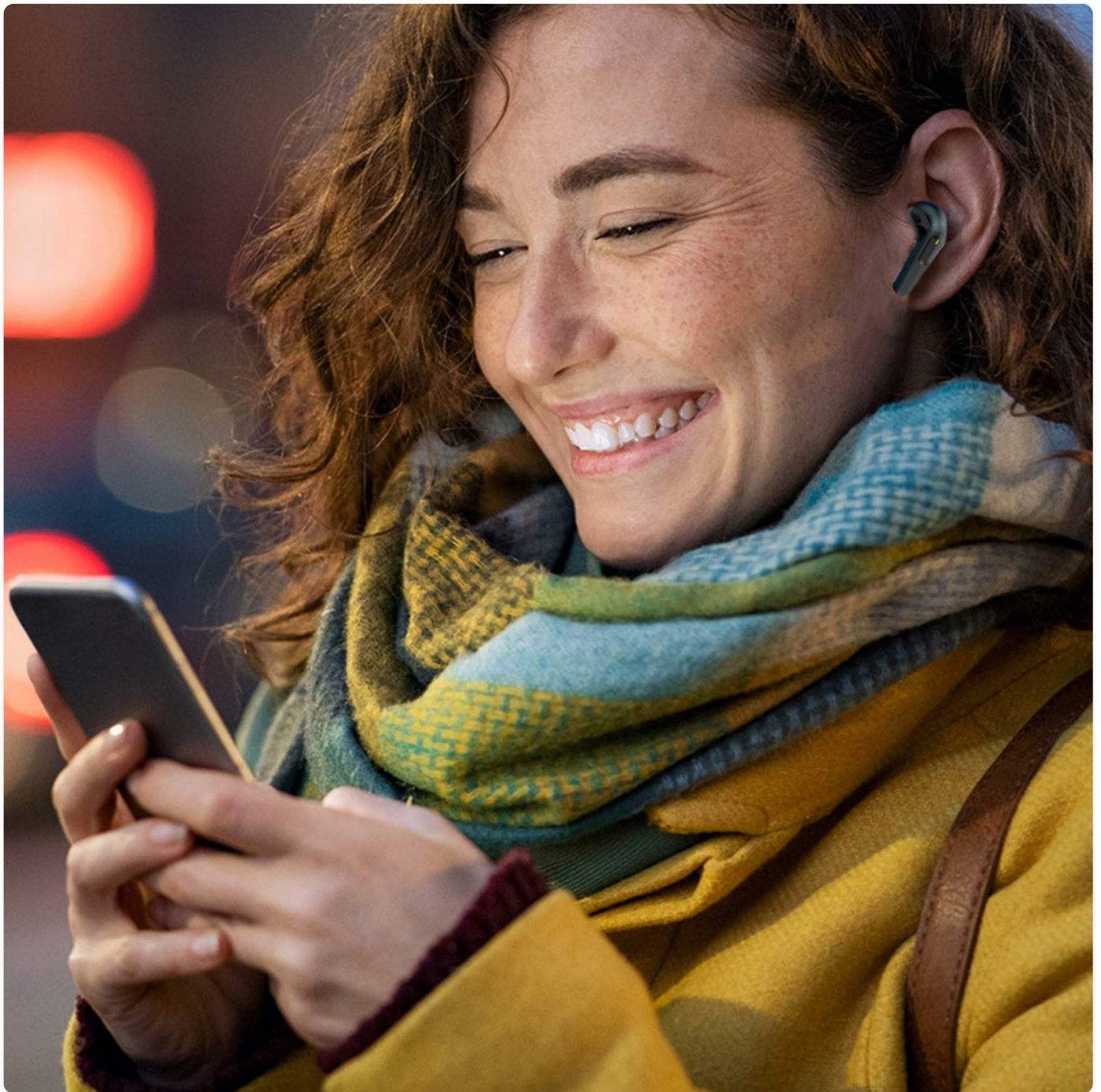


Image: A close-up view of the charging case's LED display, showing the battery percentage, indicating the charge level.





Image: Another close-up of the LED display on the charging case, highlighting the digital battery indicator.

## 2. Pairing with a Device

The earbuds use Bluetooth for wireless connectivity.

1. Open the charging case. The earbuds will automatically enter pairing mode.
2. On your device (smartphone, tablet, laptop), enable Bluetooth and search for new devices.
3. Select "Laser TWS Earbuds" or "EPS-LT10B-128" from the list of available devices.
4. Once connected, you will hear a confirmation tone, and the earbuds will be ready for use.
5. The earbuds support multi-device compatibility, allowing pairing with various devices.

## OPERATING INSTRUCTIONS

### Wearing the Earbuds

The earbuds are designed for ergonomic comfort and a secure fit. Gently insert each earbud into your ear canal and twist

slightly to ensure a snug and comfortable position. This helps optimize sound quality and stability.

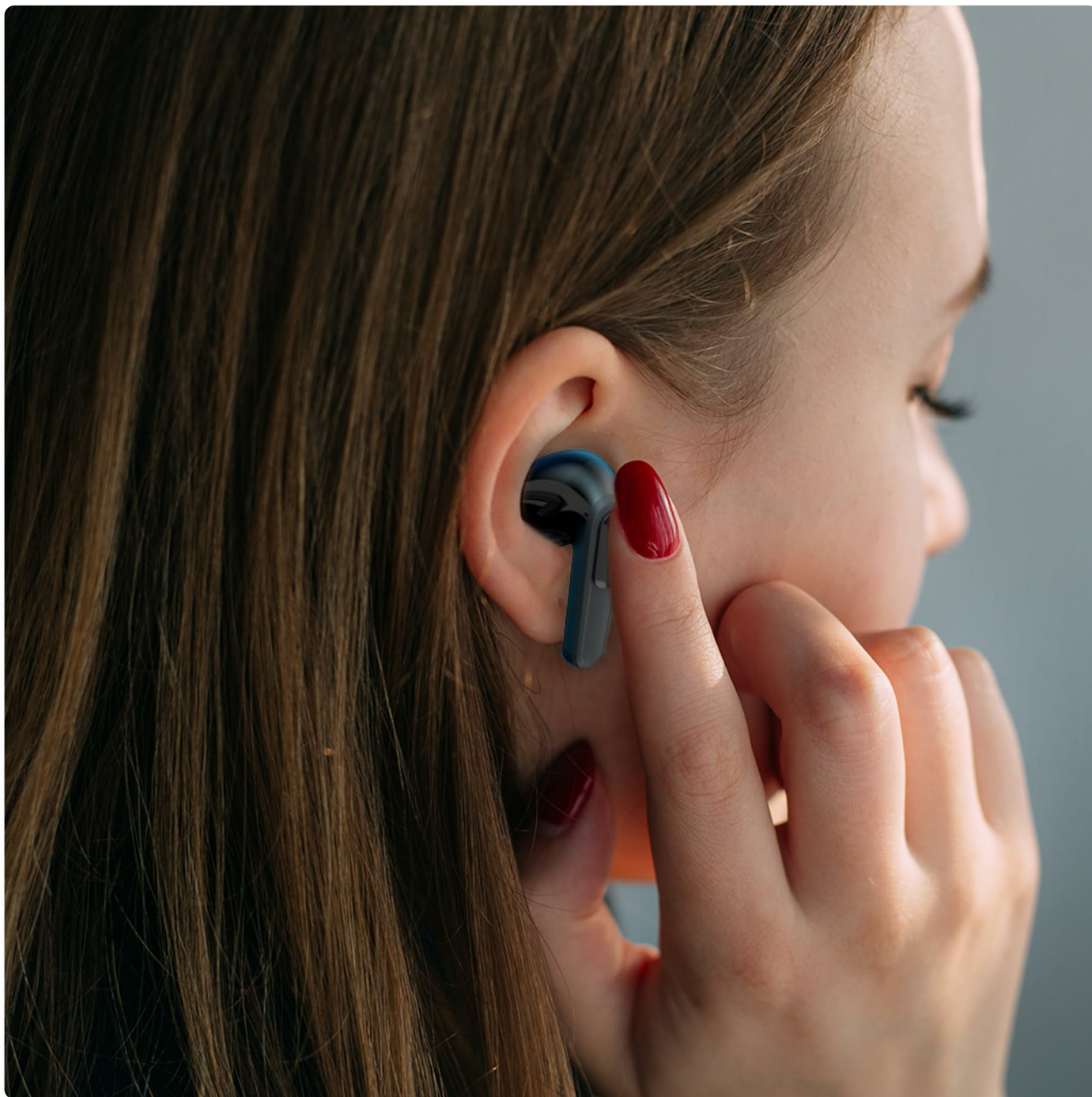


Image: A woman comfortably wearing one of the Laser TWS Earbuds while interacting with her smartphone.



## LED Display Shows Battery levels

Image: A man walking outdoors, wearing a Laser TWS Earbud, demonstrating the ergonomic design for active use.

### True Wireless Stereo Experience

These earbuds provide a true wireless stereo experience, delivering high-fidelity sound with clear channel separation for an immersive audio experience, whether for music, movies, or gaming.





## True Wireless Stereo

### Stereo sound

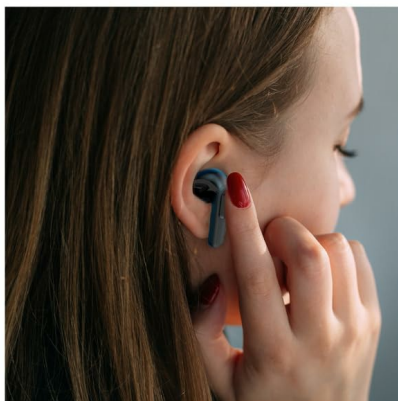
Increased fidelity provided by stereo sound gives channel separation when listening to music or watching movies and can allow for more pin-point accuracy when gaming. Pair it with computers, smartphones or even the TV to bring more detail and enjoyment to everyday media.



## LED Display

### Shows Battery levels

The bright light up display on the earbud case clearly shows remaining battery levels, so you know when your earbuds and carry case need recharging. The carry case lets you recharge both earbuds up to 3 times each.



## Tap Controls

### Access commonly used audio controls

Skip tracks, change volume, answer calls, and even access your connected smartphones voice assistant. The built-in microphone on the earbuds makes them ideal for meetings or phone calls from your connected device.

Image: A graphic representation of the True Wireless Stereo feature, showing the earbuds in their case with sound wave visualizations.

## Tap Controls

The earbuds feature intuitive tap controls for easy management of audio playback and calls without needing to access your connected device.

Action	Control
Play/Pause Music	Single tap on either earbud
Next Track	Double tap on the right earbud
Previous Track	Double tap on the left earbud
Answer/End Call	Single tap on either earbud
Reject Call	Long press on either earbud



Action	Control
Activate Voice Assistant (Siri, Google Assistant, Alexa)	Triple tap on either earbud

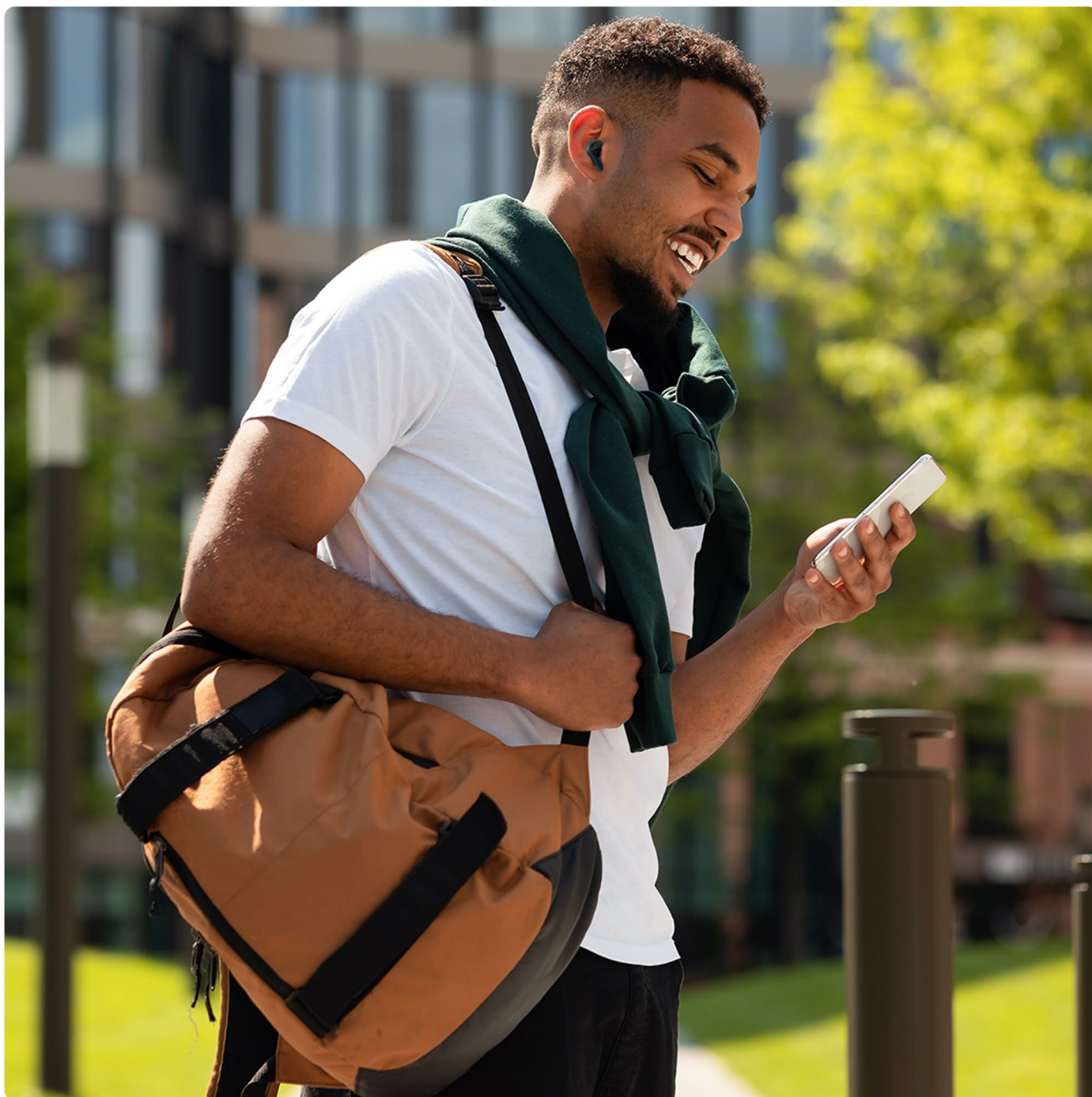


Image: A person's hand touching an earbud, illustrating the tap control functionality.

## Built-in Microphone

Each earbud includes a built-in microphone, enabling hands-free calls and meetings without needing to switch to your device.

## MAINTENANCE

- **Cleaning:** Regularly clean the earbuds and charging case with a soft, dry, lint-free cloth. Avoid using abrasive materials or harsh chemicals.
- **Storage:** When not in use, store the earbuds in their charging case to protect them and keep them charged.

- **Battery Care:** To prolong battery life, avoid fully discharging the earbuds and case frequently. Charge them regularly, even if not in constant use.
- **Water Resistance:** These earbuds are not water resistant. Avoid exposure to water, sweat, or high humidity.

## TROUBLESHOOTING

Problem	Solution
Earbuds not pairing	Ensure earbuds are charged. Turn off and on Bluetooth on your device. Forget the device in Bluetooth settings and re-pair. Place earbuds back in case and take them out again.
No sound from one earbud	Check battery level of both earbuds. Re-pair the earbuds. Try resetting the earbuds (refer to manufacturer's website for specific reset instructions if needed).
Charging case not charging	Ensure the charging cable is securely connected. Try a different USB power source or cable.
Tap controls not responding	Ensure earbuds are properly seated in your ears. Clean the touch sensitive area. Re-pair the earbuds.

If you encounter persistent issues, please refer to the official Laser support website for further assistance.

## SPECIFICATIONS

Feature	Detail
Model	EPS-LT10B-128
Connectivity Technology	Bluetooth Wireless
Noise Control	Sound Isolation
Battery Life (Earbuds)	Approx. 3 Hours
Charging Time	Approx. 1 Hour
Charging Case Recharges	Up to 3 times
Maximum Operating Distance	10 Meters
Control Type	Touch Control, Voice Control
Material	Plastic
Item Weight	30 Grams
Dimensions	62.2 x 42.5 x 32.6 cm (Product)
Water Resistance Level	Not Water Resistant

## WARRANTY AND SUPPORT

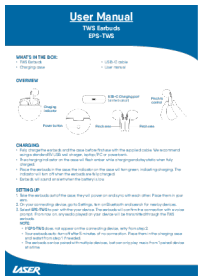
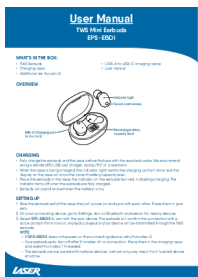
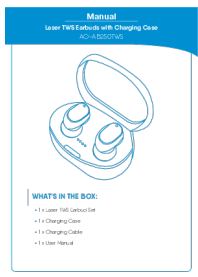
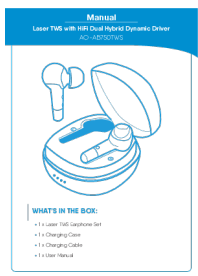
The Laser TWS Earbuds come with a **1-year warranty** from the date of purchase. Please retain your proof of purchase for warranty claims.



For further support, troubleshooting, or warranty information, please visit the official Laser website:

Laser Product Support Page

You may also contact Laser customer service directly for assistance.

Related Documents - EPS-LT10B-128

	<p><a href="#">Laser TWS Earbuds EPS-TWS User Manual</a></p> <p>User manual for Laser TWS Earbuds EPS-TWS, detailing setup, charging, controls, safety precautions, troubleshooting, and specifications for wireless audio.</p>
	<p><a href="#">Laser TWS Mini Earbuds EPS-EBDI User Manual</a></p> <p>Comprehensive user manual for the Laser TWS Mini Earbuds, model EPS-EBDI. Includes setup, charging, functions, safety precautions, troubleshooting, and specifications.</p>
	<p><a href="#">Laser TWS Earbuds AO-AB250TWS User Manual &amp; Technical Specifications</a></p> <p>User manual and technical specifications for Laser TWS Earbuds with Charging Case (Model AO-AB250TWS). Includes setup, operation, charging, troubleshooting, and warranty information.</p>
	<p><a href="#">Laser AO-AB750TWS Wireless Earphones User Manual</a></p> <p>Comprehensive user manual for the Laser AO-AB750TWS Laser TWS wireless earphones, featuring HiFi Dual Hybrid Dynamic Driver technology. This guide covers setup, pairing, operation, charging, troubleshooting, and warranty information.</p>

<div data-bbox="119 91 311 360"><p><b>Manual</b> Universal 10" Tablet Case with Bluetooth Keyboard AO-UNIKB10BK</p></div> <div data-bbox="119 241 311 360"><p><b>SAFETY INSTRUCTIONS AND PRECAUTIONS</b></p><ul style="list-style-type: none"><li>Read all instructions carefully before use.</li><li>Follow the manual for safe use.</li><li>Do not use the product for any other purpose.</li><li>Do not use the product in wet or damp areas.</li><li>Do not use the product near open flames or heat sources.</li><li>Do not use the product near water.</li><li>Do not use the product near children.</li><li>Do not use the product near pets.</li><li>Do not use the product near electrical outlets.</li><li>Do not use the product near power lines.</li><li>Do not use the product near moving vehicles.</li><li>Do not use the product near machinery.</li><li>Do not use the product near heavy equipment.</li><li>Do not use the product near construction sites.</li><li>Do not use the product near airports.</li><li>Do not use the product near military bases.</li><li>Do not use the product near government facilities.</li><li>Do not use the product near schools.</li><li>Do not use the product near hospitals.</li><li>Do not use the product near religious institutions.</li><li>Do not use the product near government buildings.</li><li>Do not use the product near courthouses.</li><li>Do not use the product near police stations.</li><li>Do not use the product near fire stations.</li><li>Do not use the product near ambulance stations.</li><li>Do not use the product near military bases.</li><li>Do not use the product near government facilities.</li><li>Do not use the product near schools.</li><li>Do not use the product near hospitals.</li><li>Do not use the product near religious institutions.</li><li>Do not use the product near government buildings.</li><li>Do not use the product near courthouses.</li><li>Do not use the product near police stations.</li><li>Do not use the product near fire stations.</li><li>Do not use the product near ambulance stations.</li></ul><p><b>WHAT'S IN THE BOX</b></p><ul style="list-style-type: none"><li>1 x Universal Tablet Keyboard Case</li><li>1 x USB Charging Cable</li><li>1 x User Manual</li></ul></div>	<p><a href="#">Laser AO-UNIKB10BK Universal 10" Tablet Bluetooth Keyboard Case - User Manual</a></p> <p>User manual for the Laser AO-UNIKB10BK Universal 10" Tablet Case with Bluetooth Keyboard, covering setup, pairing, usage, troubleshooting, and warranty information.</p>
<div data-bbox="119 580 311 848"><p><b>User Manual</b> Portable Fabric Speaker Max SP-1824</p></div> <div data-bbox="119 622 311 848"><p><b>WHAT'S IN THE BOX</b></p><ul style="list-style-type: none"><li>1 x Portable Fabric Speaker Max</li><li>1 x USB Charging Cable</li><li>1 x User Manual</li></ul><p><b>DISCLAIMER</b></p><p>Please read the manual carefully before using the product. The product is not intended for use in wet or damp areas. Do not use the product near open flames or heat sources. Do not use the product near water. Do not use the product near children. Do not use the product near pets. Do not use the product near electrical outlets. Do not use the product near power lines. Do not use the product near moving vehicles. Do not use the product near machinery. Do not use the product near heavy equipment. Do not use the product near construction sites. Do not use the product near airports. Do not use the product near military bases. Do not use the product near government facilities. Do not use the product near schools. Do not use the product near hospitals. Do not use the product near religious institutions. Do not use the product near government buildings. Do not use the product near courthouses. Do not use the product near police stations. Do not use the product near fire stations. Do not use the product near ambulance stations. Do not use the product near military bases. Do not use the product near government facilities. Do not use the product near schools. Do not use the product near hospitals. Do not use the product near religious institutions. Do not use the product near government buildings. Do not use the product near courthouses. Do not use the product near police stations. Do not use the product near fire stations. Do not use the product near ambulance stations.</p><p><b>CAUTIONS</b></p><p>Do not use the product in wet or damp areas. Do not use the product near open flames or heat sources. Do not use the product near water. Do not use the product near children. Do not use the product near pets. Do not use the product near electrical outlets. Do not use the product near power lines. Do not use the product near moving vehicles. Do not use the product near machinery. Do not use the product near heavy equipment. Do not use the product near construction sites. Do not use the product near airports. Do not use the product near military bases. Do not use the product near government facilities. Do not use the product near schools. Do not use the product near hospitals. Do not use the product near religious institutions. Do not use the product near government buildings. Do not use the product near courthouses. Do not use the product near police stations. Do not use the product near fire stations. Do not use the product near ambulance stations.</p></div>	<p><a href="#">Laser SP-1824 Portable Fabric Speaker Max User Manual</a></p> <p>Comprehensive user manual for the Laser SP-1824 Portable Fabric Speaker Max, covering setup, Bluetooth pairing, TWS pairing, troubleshooting, and specifications.</p>