

**SENSEA 3276000707035**

# SENSEA PURITY Oval Toilet Seat User Manual

Model: 3276000707035

## INTRODUCTION

---

Thank you for choosing the SENSEA PURITY Oval Toilet Seat. This product is designed for comfort, durability, and ease of maintenance, featuring a soft-close mechanism and quick-release function. It is crafted from FSC-certified wood, ensuring a sustainable and robust design. This manual provides essential information for the proper installation, operation, and care of your new toilet seat.



Image: SENSEA PURITY Oval Toilet Seat installed in a modern bathroom setting, showcasing its sleek black design.

## SETUP AND INSTALLATION

---

The SENSEA PURITY toilet seat is designed for easy installation on most standard toilet bowls thanks to its adjustable hinges and top-fix mounting system. No need to reach under the toilet bowl.

### Components Included:

- Toilet Seat and Lid
- Stainless Steel Hinges
- Top-Fix Mounting Screws and Washers
- Expansion Plugs



Image: All components of the SENSEA PURITY toilet seat laid out, including the black seat and lid, chrome hinges, screws, and plastic expansion plugs for installation.

## Installation Steps:

1. **Prepare the Toilet Bowl:** Ensure the toilet bowl's mounting holes are clean and free of debris.
2. **Insert Expansion Plugs:** Place the expansion plugs into the mounting holes on the toilet bowl.
3. **Position Hinges:** Place the hinge bases over the expansion plugs. The adjustable hinges allow for alignment with varying hole distances (105-205 mm).
4. **Secure Hinges:** Insert the top-fix screws through the hinge bases and into the expansion plugs. Tighten the screws until the hinges are firmly secured, but do not overtighten.
5. **Attach Toilet Seat:** Align the toilet seat with the hinge posts and press down until it clicks into place. Ensure it is securely fastened.



Image: Diagram illustrating the "Top Fix" installation method, where screws are inserted from above the toilet bowl to secure the seat hinges.

## OPERATING INSTRUCTIONS

The SENSEA PURITY toilet seat features a soft-close mechanism for quiet and safe operation.

### Soft-Close Function:

- To close the seat or lid, simply push it gently downwards. The soft-close mechanism will engage, allowing the seat and lid to lower slowly and silently without slamming.
- This feature prevents loud noises and reduces the risk of pinching fingers, enhancing safety and comfort.

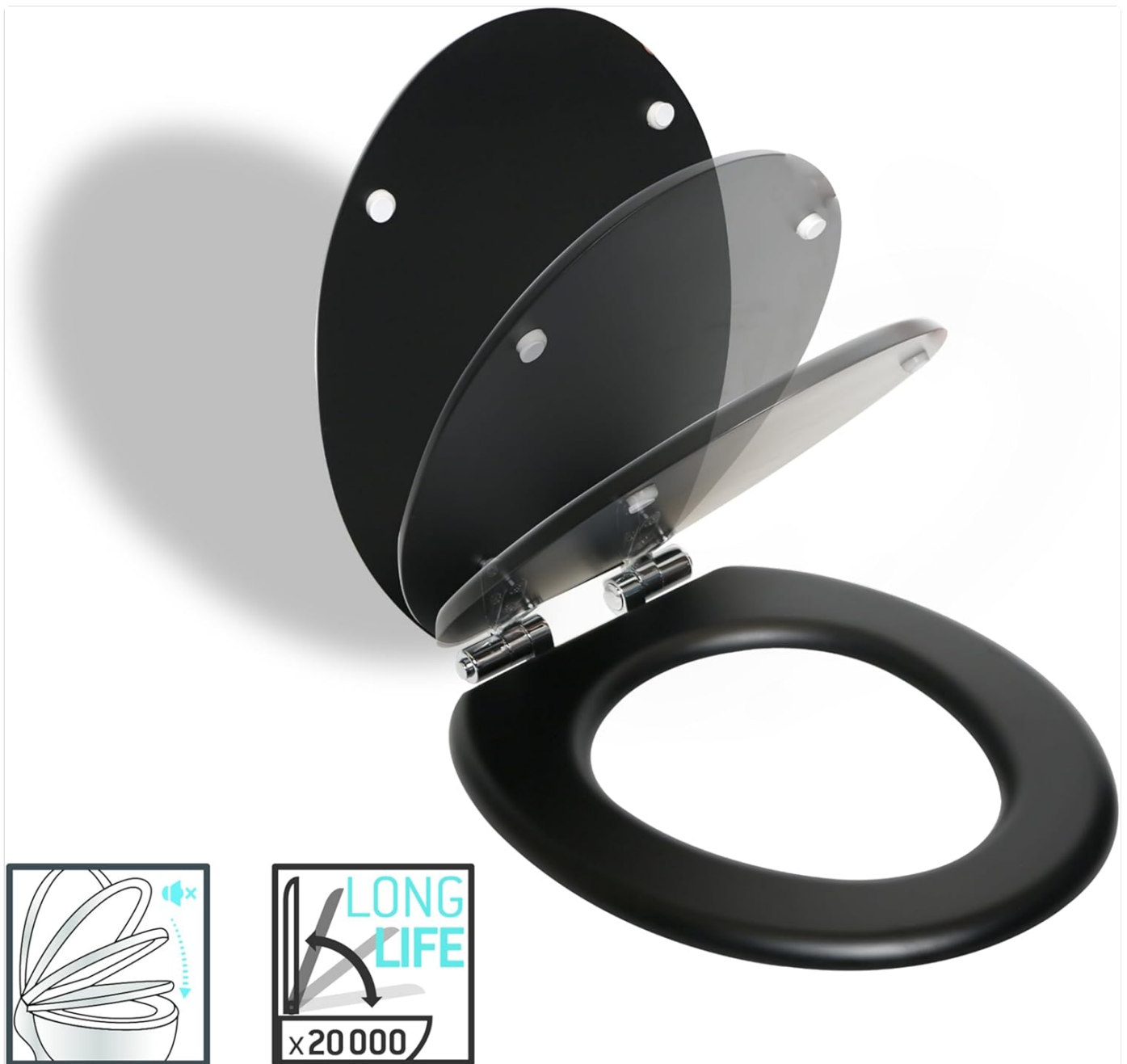


Image: A sequence of images demonstrating the soft-close function, showing the toilet seat and lid slowly lowering into place.

## MAINTENANCE AND CLEANING

Regular cleaning will ensure the longevity and hygiene of your SENSEA PURITY toilet seat. The quick-release function makes cleaning effortless.

### Cleaning Steps:

1. **Quick Release:** Press the quick-release button (usually located near the hinges) to detach the toilet seat from the hinge posts. This allows for thorough cleaning of both the seat and the toilet bowl rim.
2. **Clean the Seat:** Use a soft cloth and mild, non-abrasive cleaning agents. Avoid harsh chemicals, abrasive pads, or strong detergents, as these can damage the finish and material.
3. **Clean Hinges and Bowl:** Clean the hinge posts and the toilet bowl rim with appropriate bathroom cleaners. The stainless steel hinges are corrosion-resistant.
4. **Reattach Seat:** Once clean and dry, align the seat with the hinge posts and press down firmly until it clicks back into place.



Image: Diagram illustrating the quick-release mechanism, showing how to press a button to easily detach the toilet seat for cleaning.

## TROUBLESHOOTING

If you encounter any issues with your SENSEA PURITY toilet seat, refer to the following common solutions:

- **Seat is Loose:** Check the top-fix screws. Tighten them gently until the seat is stable. Do not overtighten.
- **Soft-Close Not Working Properly:** Ensure the hinges are clean and free from obstruction. If the issue persists, the mechanism might be worn; contact customer support.
- **Seat Does Not Detach for Cleaning:** Ensure you are pressing the quick-release button firmly. Check for any debris obstructing the mechanism.
- **Seat Wobbles:** Verify that the expansion plugs are correctly seated in the toilet bowl holes and that the hinge bases are properly aligned and tightened.

# SPECIFICATIONS

## Product Specifications

Model Number	3276000707035
Brand	SENSEA
Material	FSC Certified Wood (MDF)
Color	Black
Shape	Oval
Dimensions (L x W x H)	45 x 37.3 x 2.51 cm (17.7 x 14.7 x 1.0 inches)
Weight	3.6 kg (7.9 lbs)
Max Load Capacity	150 kg (330 lbs)
Hinge Adjustment Range	105-205 mm
Features	Soft-Close, Quick Release, Top-Fix Installation, Corrosion-Resistant Stainless Steel Hinges



Image: Technical drawing with key dimensions of the toilet seat: length 450 mm, width 373 mm, and hinge distance adjustable from 105-205 mm.

## WARRANTY INFORMATION

---

Specific warranty details for the SENSEA PURITY toilet seat may vary by region and retailer. Please retain your proof of purchase for any warranty claims. For detailed warranty terms and conditions, refer to the documentation provided at the point of purchase or contact your retailer.

## CUSTOMER SUPPORT

---

For further assistance, technical support, or inquiries regarding your SENSEA PURITY toilet seat, please contact the retailer from whom you purchased the product. You may also visit the official SENSEA website for general product information.

**Manufacturer:** ADEO



