

Dangbei DBOD02

Dangbei Atom Portable Laser Projector User Manual

Model: DBOD02

[Box](#) [Setup](#) [Operating](#) [Introduction](#) [What's in the Box](#) [Maintenance](#) [Troubleshooting](#) [Specifications](#) [Warranty & Support](#)

1. INTRODUCTION

The Dangbei Atom Portable Laser Projector is a compact and powerful home entertainment device designed to deliver a stunning visual and audio experience. Featuring advanced ALPD laser technology, 1200 ISO lumens brightness, and 1080p Full HD resolution with 4K HDR input support, it projects images up to 180 inches. With built-in Google TV and official Netflix licensing, access to a vast library of streaming content is seamless. Its intelligent screen adjustment features, including autofocus and keystone correction, ensure a perfect picture in seconds. The Atom also boasts dual 5W Dolby Audio speakers for immersive sound and a highly portable design, making it ideal for use in any room.

2. WHAT'S IN THE BOX

Carefully unpack all items from the box. Ensure all components listed below are present and in good condition.

- Dangbei ATOM Portable Laser Projector x 1
- Power Plug 120W (19V/6.32A) x 1
- AC Cord x 1
- Bluetooth Remote Control x 1
- User Manual x 1



Image: The Dangbei Atom Portable Laser Projector and its included accessories.

3. SETUP GUIDE

3.1 Initial Placement & Power On

Place the projector on a stable, flat surface. Connect the AC cord to the power plug, and then plug the power plug into the projector's power port. Plug the other end of the AC cord into a wall outlet. The projector will power on automatically or can be turned on using the power button on the remote or the device itself.

3.2 Intelligent Screen Adjustment

The Dangbei Atom features intelligent screen adjustment technology for a quick and perfect image setup:

- **Autofocus:** The projector automatically adjusts the focus for a clear image.
- **Auto Keystone Correction:** The image will automatically correct its shape to be rectangular, even if the projector is placed at an angle.
- **Screen Fit:** The projector can automatically adjust the image size to fit your screen or wall.
- **Obstacle Avoidance:** The projector can detect and avoid obstacles on the projection surface, adjusting the image accordingly.

Advanced ALPD® Projection Technology

💡 1200ISO

🌈 HDR

HLG

1080P
FULL HD



**Support for
4K content**

Please ensure to connect 4K devices,
utilizing HDMI for video playback.



Image: Visual representation of Auto Focus, Keystone Correction, Obstacle Avoidance, and Screen Fit features.

3.3 Physical Dimensions & Portability

The Atom projector is designed for portability, measuring 7.68 x 7.68 x 1.87 inches and weighing just 2.82 lbs. This makes it lighter than a standard laptop, allowing for easy movement between rooms or for travel.



Image: The compact size and weight of the Dangbei Atom projector.

4. OPERATING INSTRUCTIONS

4.1 Remote Control Overview

The intuitive remote control makes navigating the projector's features simple. It includes dedicated buttons for popular streaming services and voice control via Google Assistant.

- **Red Side Key (Up):** Press for manual focus. Press and hold for 2 seconds for autofocus.

- **Black Side Key (Down):** Press to access Projector settings. Press and hold to mute/restore volume.
- **Google Assistant Button:** Activate voice commands.
- **Dedicated App Buttons:** Quick access to YouTube, Netflix, and Prime Video.

73%↓ Power Consumption
Save 640kWh in a year

Laser Projector
Dangbei Atom



Bulb brightness



30,000 hrs
Lifespan

Lamp Projector
Other



Bulb brightness



3,000 hrs
Lifespan



Laser Projector



10X
Lifespan



Lamp Projector

Image: The remote control highlighting its key functions and dedicated buttons.

4.2 Accessing Content with Google TV

The Dangbei Atom comes with built-in Google TV, providing access to over 10,000 apps from Google Play and a vast library of 700,000+ movies and shows from services like Netflix, YouTube, Prime Video, Hulu, Disney+, and more.

All Your Favorite Content on Google TV™



Image: The Google TV home screen displaying various streaming applications.

4.3 Reading Files from a USB Drive

The projector supports NTFS and FAT32 formats for USB drives. To read files:

1. Insert your USB drive into the USB 2.0 port on the projector.
2. Navigate to the 'Apps' section on the Google TV interface.
3. Search for and install a 'File Manager' app from the Google Play Store if not already present.
4. Open the File Manager app and grant necessary permissions (e.g., 'Allow management of all files').

5. You can now browse and play media files directly from your USB drive.

Your browser does not support the video tag.

Video: A demonstration by Dangbei Direct on how to read files from a USB drive on the projector.

4.4 Connectivity Options

The projector offers versatile connectivity:

- **HDMI:** Connect external devices like laptops, gaming consoles, or streaming sticks.
- **USB 2.0:** For connecting USB drives to play local media.
- **3.5mm Audio Jack:** For connecting external headphones or speakers.
- **Wi-Fi:** Dual-band 2.4G/5G for stable internet connection.
- **Bluetooth:** Connect Bluetooth headphones, speakers, or other accessories.



**Enjoy room-filling sound
with Dolby Audio**



Image: Rear view of the projector showing HDMI, USB, and audio ports.

4.5 Audio Features

Experience rich, room-filling sound with the dual 5W built-in speakers, enhanced by Dolby Audio. The speakers are located on the same side of the projector. You can also use the Bluetooth audio connectivity to pair with external audio devices.

Intelligent Screen Adjustment Technology



Auto Focus



Keystone correction



Obstacle Avoidance



Screen Fit

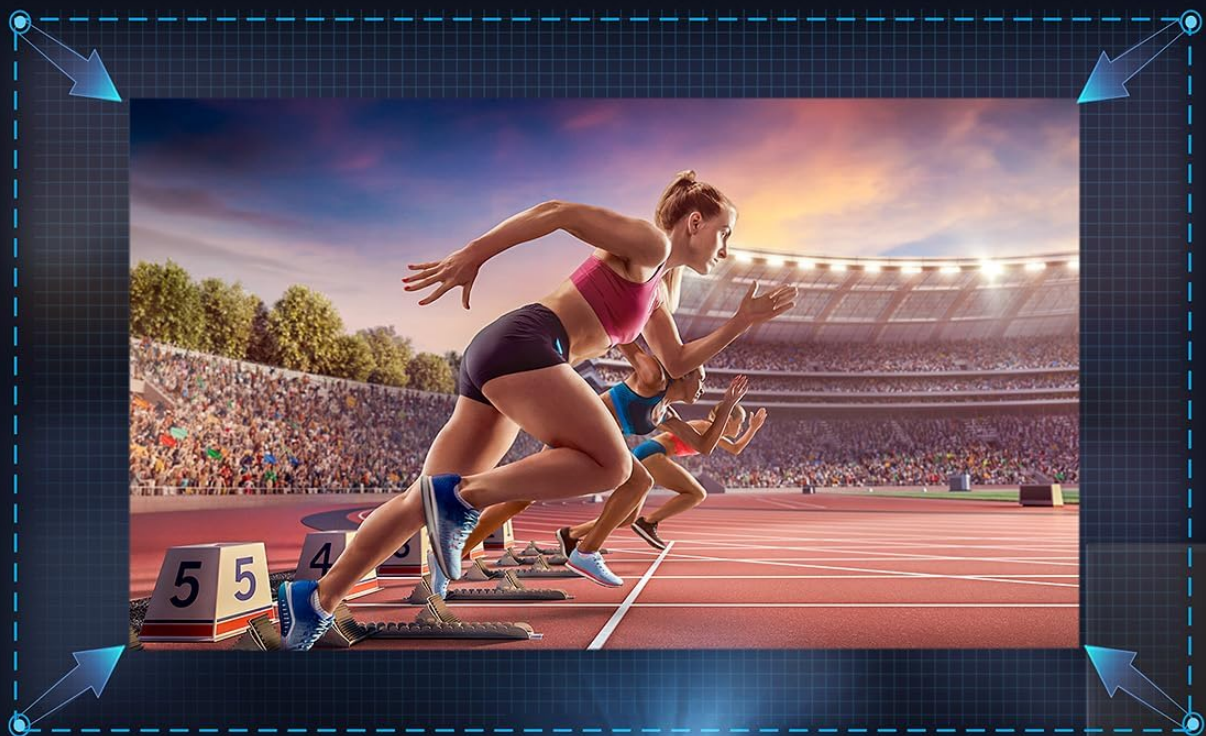


Image: Illustration of Dolby Audio sound projection from the projector.

4.6 Eye Protection

The Dangbei Atom is equipped with smart eye protection. It automatically dims the light when an object or person passes in front of the projected image, preventing direct exposure to the light source and ensuring eye safety for viewers.

5. MAINTENANCE

Proper maintenance ensures the longevity and optimal performance of your projector.

- **Cleaning the Lens:** Gently wipe the projector lens with a soft, lint-free cloth specifically designed for optical surfaces. Avoid using abrasive materials or harsh chemicals.
- **Cleaning the Exterior:** Use a soft, dry cloth to clean the exterior of the projector. Do not use liquid cleaners directly on the device.
- **Ventilation:** Ensure the projector's vents are clear of obstructions to prevent overheating. Do not block the air inlets or outlets.
- **Storage:** When not in use for extended periods, store the projector in a cool, dry place, away from direct sunlight and extreme temperatures.

6. TROUBLESHOOTING

If you encounter issues with your Dangbei Atom projector, refer to the following common solutions:

- **No Power:** Ensure the power cable is securely connected to both the projector and a working power outlet. Try a different outlet.
- **No Image:** Check if the projector is powered on. Verify the input source (HDMI, USB) is correctly selected and the external device is functioning. Ensure the lens cap is removed.
- **Blurry Image:** Allow the autofocus feature to work. If needed, use the manual focus adjustment on the remote control. Clean the projector lens with a microfiber cloth.
- **Image Not Rectangular:** The auto keystone correction should adjust the image. If not, access the 'Image Correction' settings via the remote to manually adjust keystone or screen fit.
- **No Sound:** Check the volume level on the projector and any connected external audio devices. Ensure the correct audio output is selected. If using external speakers, verify their connection.
- **Remote Not Responding:** Ensure the batteries in the remote are correctly inserted and not depleted. Try re-pairing the remote if necessary.
- **Wi-Fi/Bluetooth Connectivity Issues:** Restart the projector and your router. Ensure the projector is within range of the Wi-Fi signal. For Bluetooth, ensure the device you are trying to connect is in pairing mode.

7. SPECIFICATIONS

Feature	Detail
Brand Name	Dangbei
Item Weight	2.82 pounds
Product Dimensions	7.68 x 7.68 x 4.92 inches
Country of Origin	China
Item model number	DBOD02
Batteries	Nonstandard Battery batteries required.
Special Features	Built-In Speaker, Digital Keystone Correction, Auto Focus, Built-In Wi-Fi, 3d-Ready
Recommended Uses For Product	Education, Home Cinema, Gaming, Business




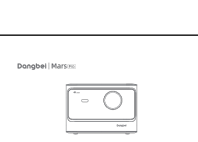
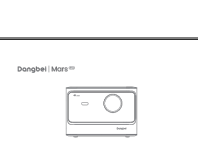

Connectivity Technology	Wireless, Bluetooth, Wi-Fi, USB, HDMI
Display resolution	1920 x 1080
Visible screen diagonal	180" / 458 cm

8. WARRANTY & SUPPORT

The Dangbei Atom Portable Laser Projector comes with a manufacturer's warranty. Please refer to the warranty card included in your product packaging for specific terms and conditions. For technical support, troubleshooting assistance, or warranty claims, please contact Dangbei customer service through their official website or the contact information provided in your product documentation.

© 2023 Dangbei. All rights reserved.

Related Documents - DBOD02

	Dangbei Atom Smart Projector User Manual User manual for the Dangbei Atom Smart Projector with Google TV, detailing setup, features, settings, troubleshooting, and safety precautions.
	Dangbei Atom Smart Projector User Manual Comprehensive user manual for the Dangbei Atom Smart Projector, covering setup, features, troubleshooting, and specifications. Learn how to connect, operate, and maintain your projector.
	Dangbei Atom Smart Projector User Manual Comprehensive user manual for the Dangbei Atom Smart Projector, covering setup, features, settings, troubleshooting, and important precautions. Includes information on Google TV, remote control operation, connectivity options like Wi-Fi and Bluetooth, and screen mirroring.
	Dangbei Mars Pro 4K Laser Home Projector User Manual Comprehensive user guide for the Dangbei Mars Pro 4K laser home projector. Learn about setup, features, operation, and maintenance for an immersive home cinema experience.
	Dangbei Mars Pro 4K Projector User Manual User manual for the Dangbei Mars Pro 4K projector, detailing setup, features, operation, network settings, focus/keystone correction, Bluetooth speaker mode, and important safety precautions.
	Dangbei Mars Smart Projector User Manual User manual for the Dangbei Mars Smart Projector, covering setup, features, troubleshooting, and specifications.

[\[pdf\]](#) User Manual Quick Start Guide Instructions Troubleshooting Guide Specifications Guide



User Guide Atom Multiple Languages Dangbei Google TV Mini Laser Projector with Built in Netflix US Manual 2023 11 10 V1 v 1729059905 cdn.shopify.s/files/1/0582/1127/0815/|||

Atom Smart Projector User Manual Language English Deutsch Franais Italiano Espaol Cestina ... ick on Bluetooth speaker mode . Connect your phone to a device with the Bluetooth name containing **DBOD02** . After modifying the device name, the Bluetooth name will also be synchronized accordingly. ...

lang:en score:46 filesize: 9.22 M page_count: 191 document date: 2024-10-16

[Dangbei Atom Smart Projector User Manual](#)

Comprehensive user manual for the Dangbei Atom Smart Projector, covering setup, features, settings, troubleshooting, and important precautions. Includes information on Google TV, remote control operation, connectivity options like Wi-Fi and Bluetooth, and screen mirroring.

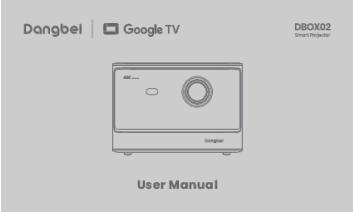
lang:en score:41 filesize: 2.09 M page_count: 23 document date: 2024-10-18



[Dangbei DBOX02 Smart Projector User Manual](#)

Comprehensive user manual for the Dangbei DBOX02 Smart Projector, featuring Google TV, 4K Ultra HD, and detailed setup, operation, and troubleshooting guides.

lang:en score:37 filesize: 4.03 M page_count: 191 document date: 2024-10-16



[\[pdf\]](#) User Manual

LF5H 1020 Dangbei | 21 juil 2024 — O návodu k produktu Ochranné známky a názvy uvedené v patří jejich příslušným vlastníkům práv Všechny pokyny jsou pouze ilustrativní pages User Manual Atom CZ diskus.cz/customZone/manualy/|||

Dangbei | C Google TV Atom Smart Projector 11 --- | |

,,,q,,,ss;s.q;sssrn,s.u.cmuuunn.wun111 ... a kliknte na Bluetooth speaker mode . Pipojte svj telefon k zazen s nzev Bluetooth obsahujcm „**DBOD02** . Po prav nzev zazen bude odpovdajcm zpsobem synchronizovn tak nzev Bluetooth. Kdyz uslyste ...

lang:hr score:31 filesize: 3.44 M page_count: 21 document date: 2024-07-16

[\[pdf\]](#)

Dangbei | O2 C Google TV Atom Smart Projector 11 | q ss s sssrn u cmuuunn wun11 1 Uživatelský manuál Pro připojení vyberte „DBOD02 Projektor content o2.cz/telefony a zarizeni api bff order v1 files CQ295 |||

Dangbei | C Google TV Atom Smart Projector 11 --- | |

,,,q,,,ss;s.q;sssrn,s.u.cmuuunn.wun111 ... a kliknte na Bluetooth speaker mode . Pipojte svj telefon k zazen s nzev Bluetooth obsahujcm „**DBOD02** . Po prav nzev zazen bude odpovdajcm zpsobem synchronizovn tak nzev Bluetooth. Kdyz uslyste ...

lang:hr score:30 filesize: 940.57 K page_count: 21 document date: 2024-12-02



[Dangbei Mars Pro 2 Smart Projector User Manual](#)

Comprehensive user manual for the Dangbei Mars Pro 2 Smart Projector, detailing setup, features like Google TV and Google Assistant, connectivity options, troubleshooting, and safety precautions.

lang:en score:26 filesize: 2 M page_count: 122 document date: 2024-03-27

