

## ANZZI 3060WIL

# ANZZI 3060WIL 30x60 Inch Left Drain Walk-In Whirlpool and Air Bathtub User Manual

Model: 3060WIL

## 1. SAFETY INFORMATION

Please read all instructions carefully before installation and use. Failure to follow these instructions may result in injury or property damage. Retain this manual for future reference.

- **Professional Installation:** Installation of this walk-in bathtub requires plumbing and electrical expertise. It is strongly recommended that installation be performed by a qualified, licensed professional.
- **Electrical Safety:** Ensure all electrical connections are made according to local codes and standards. The bathtub must be connected to a dedicated, ground-fault circuit interrupter (GFCI) protected circuit. Do not operate the tub if the GFCI trips.
- **Water Temperature:** Exercise caution with water temperature. Prolonged exposure to excessively hot water can cause hyperthermia. Always test water temperature before entering the tub.
- **Entry and Exit:** Use the integrated grab bar for stability when entering and exiting the tub. The slip-resistant floor is designed to enhance safety.
- **Weight Limit:** Do not exceed the maximum recommended weight capacity for the tub. Consult a professional if unsure.
- **Chemicals:** Avoid using harsh chemicals or abrasive cleaners that could damage the acrylic surface or internal components.
- **Children and Individuals with Health Conditions:** Supervise children near the bathtub. Individuals with heart conditions, high blood pressure, diabetes, or other health concerns should consult a physician before using the whirlpool or air jet functions.

## 2. PRODUCT OVERVIEW

The ANZZI 3060WIL Walk-In Bathtub is designed for comfort and accessibility, featuring a left-side drain and a range of therapeutic functions. This model integrates a whirlpool system, air jets, a quick-fill faucet, and chromatherapy lighting for a comprehensive bathing experience.

- **Walk-In Design:** Features a wide-opening, watertight pressure-sealed door for easy and safe entry and exit. Includes ADA-compliant contoured seating and a Safe Reach grab bar.
- **Hydrotherapy Jets:** Nine strategically placed whirlpool jets provide therapeutic relief to muscles and joints.

- **Quick-Fill Faucet & Fast Drain:** Equipped with a high-efficiency faucet for rapid filling and a powered fast drain system that empties the tub quickly.
- **Chromatherapy Lighting:** Built-in ambient LED lighting offers color therapy for enhanced relaxation.
- **Durable Construction:** Made from industrial-grade acrylic with a slip-resistant floor for longevity and safety. Includes a maintenance heater to sustain water temperature.



Figure 2.1: Angled view of the ANZZI 3060WIL Walk-In Bathtub, showcasing the door, faucet, and control panel.



Figure 2.2: The ANZZI 3060WIL Walk-In Bathtub integrated into a modern bathroom setting, viewed from the side.



Figure 2.3: Front view of the ANZZI 3060WIL Walk-In Bathtub, highlighting the entry door and control panel.

# FAST FILL

## 4-PIECE FAUCET SET



Figure 2.4: The ANZZI 3060WIL Walk-In Bathtub in a bathroom, showing its full profile and surrounding fixtures.

### 3. SETUP AND INSTALLATION

Proper installation is crucial for the safe and efficient operation of your ANZZI Walk-In Bathtub. It is highly recommended to engage a licensed plumber and electrician for the installation process.

#### 3.1 Pre-Installation Checklist

- Verify all components are present and undamaged.
- Ensure the installation area meets the required dimensions and structural support.
- Confirm access to appropriate plumbing (hot and cold water lines, drain) and electrical connections (dedicated GFCI circuit).
- **Important:** Test the tub's drain and jets before permanent installation to identify any potential issues.

#### 3.2 Dimensions and Clearance

Refer to the diagram below for detailed product dimensions and required clearances.



Figure 3.1: Technical drawing with overall dimensions (59"L x 30"W x 39"H) and interior width (22.25") of the 3060WIL Walk-In Bathtub.

- Overall Size: 59" L x 30" W x 39" H
- Interior Width: 22.25"
- Seat Height: 16.75"
- Step-in Height: 7.25"

### 3.3 Plumbing Connections

Connect the hot and cold water supply lines to the quick-fill faucet assembly. Ensure all connections are watertight. The tub features a left-side drain; connect it to your home's drainage system according to local plumbing codes.

### 3.4 Electrical Connections

The whirlpool and air jet systems, chromatherapy lighting, and maintenance heater require electrical power. A dedicated GFCI-protected circuit is mandatory. Consult the electrical diagram provided with your product packaging for specific wiring instructions. Ensure the power supply is disconnected during installation.



## 4. OPERATING INSTRUCTIONS

Familiarize yourself with the controls before operating the bathtub.

### 4.1 Filling the Bathtub

1. Close the walk-in door securely. Ensure the watertight seal is properly engaged.
2. Turn on the quick-fill faucet. Adjust the hot and cold mixing valves to achieve the desired water temperature.
3. Fill the tub to a level that covers the highest jets, but do not overflow.

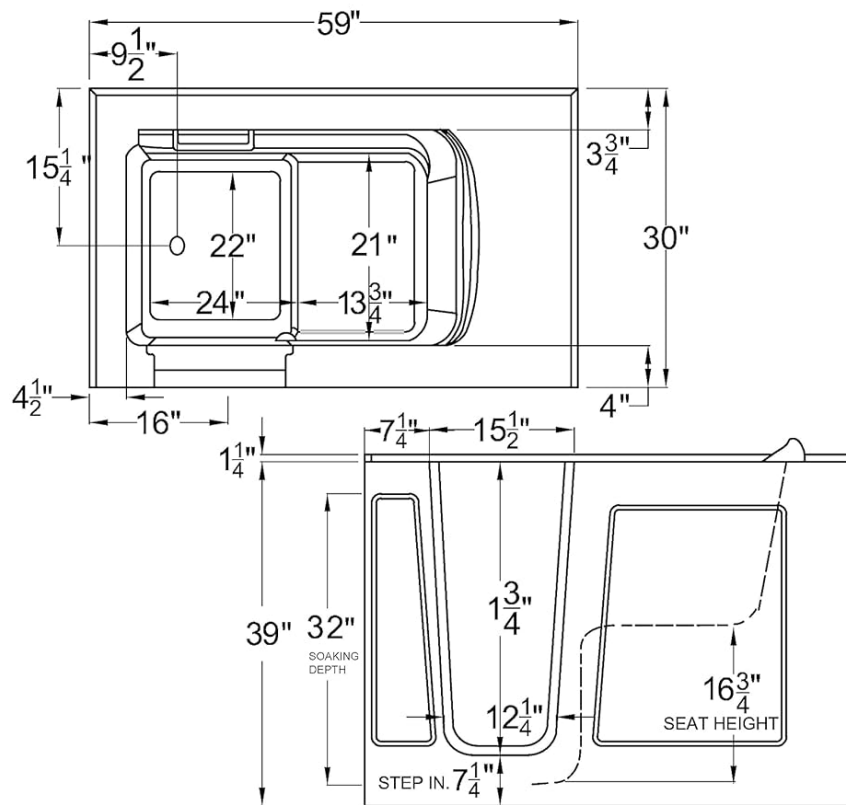
v202112

# 3060WI

## WALK-IN BATHTUB

OVERALL SIZE (IN): 59 L x 30 W x 39 H

INTERIOR WIDTH (IN): 22.25



**IMPORTANT! TEST THE TUB'S DRAIN AND JETS (if any) BEFORE PERMANENT INSTALLATION!**

- Please measure tub on-site before building tub surrounding!
- Thoroughly read user installation guide and manual before starting installation.
- Measurements are subject to a +/- .5" variance and subject to change without notice.

Figure 4.1: The 4-piece quick-fill faucet set, featuring hot/cold mixing valves, a 5.7 GPM flow rate spout, and a 60" reach pull-out sprayer.

### 4.2 Operating Hydrotherapy Jets

Once the tub is filled, press the designated button on the control panel to activate the whirlpool jets. The nine jets are designed to provide a therapeutic massage. Press the button again to turn them off.



Figure 4.2: Close-up view of the bathtub interior, showing the whirlpool jets and control buttons.

### 4.3 Operating Chromatherapy Lighting

Activate the chromatherapy LED lighting by pressing the corresponding button on the control panel. Cycle through various colors or set it to a preferred hue to enhance your relaxation experience. Press the button again to turn off the lighting.

### 4.4 Using the Maintenance Heater

The integrated maintenance heater helps to keep the water warm during longer bathing sessions. It activates automatically when the whirlpool system is running or can be manually engaged via the control panel, if applicable. This heater is not designed to heat cold water, but rather to maintain the temperature of already heated water.

### 4.5 Draining the Bathtub

1. After use, ensure all jets and lighting are turned off.
2. Activate the powered fast drain system via the control panel. The tub will empty rapidly, typically within one minute.
3. Once the tub is empty, open the walk-in door.

## 5. MAINTENANCE AND CLEANING

---

Regular maintenance ensures the longevity and optimal performance of your ANZZI Walk-In Bathtub.

### 5.1 Cleaning the Bathtub Surface

- Clean the acrylic surface with a soft cloth and a mild, non-abrasive bathroom cleaner.
- Avoid using abrasive pads, harsh chemicals, or solvents, as these can damage the finish.



- Rinse thoroughly with clean water after cleaning.

## 5.2 Jet System Cleaning

- Periodically fill the tub with warm water and add a small amount of a non-foaming jet cleaner or white vinegar.
- Run the whirlpool jets for 10-15 minutes to circulate the cleaning solution.
- Drain the tub and rinse thoroughly with fresh water.

## 5.3 Faucet and Drain Care

- Wipe down the faucet and drain components with a soft cloth after each use to prevent water spots and mineral buildup.
- For stubborn stains, use a mild cleaner specifically designed for chrome or polished finishes.

## 6. TROUBLESHOOTING

This section addresses common issues you might encounter. For problems not listed here, please contact ANZZI customer support.

Problem	Possible Cause	Solution
Tub does not fill or fills slowly.	Water supply valves are closed; low water pressure; faucet blockage.	Ensure water supply valves are fully open. Check household water pressure. Inspect faucet for debris.
Whirlpool jets do not activate.	No power to the unit; GFCI tripped; water level too low; control panel issue.	Check power supply and reset GFCI if tripped. Ensure water level is above jets. Contact support if control panel is unresponsive.
Tub drains slowly or not at all.	Drain blockage; powered drain system malfunction.	Check drain for obstructions. If the powered drain system is not operating, verify electrical connection and contact support.
Water temperature does not stay warm.	Maintenance heater not functioning; initial water temperature too low.	Ensure the maintenance heater is activated. The heater maintains temperature, it does not heat cold water. Start with adequately hot water.
Door leaks.	Door not properly closed; seal damaged or dirty.	Ensure the door is fully latched and the seal is clean and free of debris. Inspect the seal for damage.

## 7. SPECIFICATIONS

Detailed specifications for the ANZZI 3060WIL Walk-In Bathtub.

Feature	Detail
Brand	ANZZI
Model Number	3060WIL
Product Dimensions	59" L x 30" W x 39" H
Color	White (Left Door)

Feature	Detail
Finish Type	White
Item Weight	170 Pounds
Installation Type	Freestanding
Shape	Rectangular
UPC	191042075894
Hydrotherapy Jets	9 Whirlpool Jets
Drain Location	Left
Special Features	Quick-Fill Faucet, Powered Fast Drain, Chromatherapy Lighting, Maintenance Heater, Slip-Resistant Floor, Safe Reach Grab Bar, ADA-Compliant Seating

## 8. WARRANTY AND SUPPORT

For warranty information, technical assistance, or to order replacement parts, please contact ANZZI customer support. Keep your purchase receipt and model number (3060WIL) readily available when contacting support.

**ANZZI Customer Support:** Refer to the contact information provided in your product packaging or visit the official ANZZI website for the most current support details.

