

[manuals.plus](#) /

› [Ledvion](#) /

› [Ledvion Smart Dimmable RGB LED Strip 10M User Manual](#)

## Ledvion LVS20008

# Ledvion Smart Dimmable RGB LED Strip 10M User Manual

Model: LVS20008

## INTRODUCTION

---

Thank you for choosing the Ledvion Smart Dimmable RGB LED Strip. This manual provides essential information for the safe and efficient installation, operation, and maintenance of your new LED strip. Please read this manual thoroughly before use and retain it for future reference.



Image: Ledvion Smart LED Strip 10M with packaging and accessories.

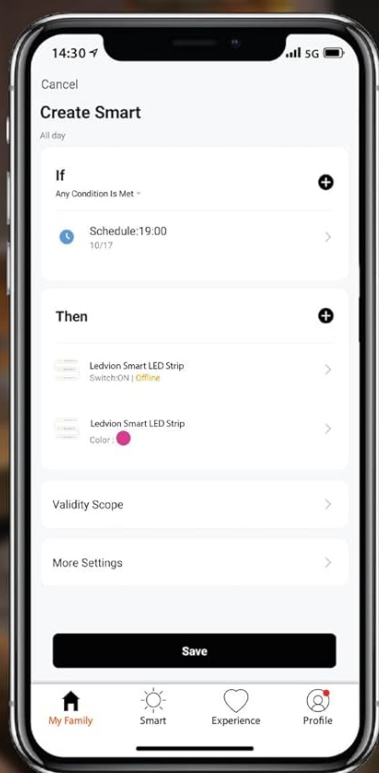
## SAFETY INFORMATION

- Ensure the power supply is disconnected before installation or maintenance.
- This product operates at a safe 24V low voltage, reducing the risk of electric shock.
- For indoor use only. Do not expose to water or high humidity.
- Do not bend the LED strip sharply or apply excessive force, as this may damage the internal circuitry.
- Keep out of reach of children and pets.
- Use only the provided power adapter and remote control.
- If any part of the product is damaged, discontinue use immediately and contact customer support.



# TIMER FUNCTION

Use the app to create a time schedule.  
Schedule when to turn on and off



ENERGY-EFFICIENT

Ledvion

*Image: Safety features and components of the Ledvion LED Strip.*

## WHAT'S IN THE BOX

Please check the contents of your package against the list below:

- 1x Ledvion Smart LED Strip (10 meters)
- 1x Remote Control
- 1x Power Adapter
- 1x Switch/Controller
- 15x Mounting Clips
- 1x User Manual

# WHAT'S IN THE BOX

SKU: LVS20008



**2x** 5M LED strip



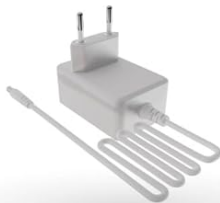
**1x** Switch



**1x** Remote



**15x** mounting clips



**1x** Adapter



**1x** Manual

*Image: Detailed view of all components included in the Ledvion LED Strip package.*

## SETUP AND INSTALLATION

- 1. Prepare the Surface:** Ensure the installation surface is clean, dry, and smooth. Dust or moisture can affect the adhesive's effectiveness.
- 2. Measure and Cut (Optional):** If a shorter length is required, the LED strip can be cut at designated marks (typically every 16.7 cm). Use sharp scissors for a clean cut.





ADJUSTABLE

# ADJUSTABLE LENGTH

It is possible to shorten the LED strip.  
Every 16.7 cm, the LED strip can be cut shorter



*Image: Instructions for safely cutting the LED strip to adjust its length.*

3. **Attach the LED Strip:** Peel off the protective backing from the 3M double-sided tape on the back of the LED strip. Carefully press the strip onto the desired surface, ensuring firm adhesion. For added security, use the provided mounting clips.
4. **Connect Components:**
  - Connect the LED strip to the switch/controller.
  - Connect the switch/controller to the power adapter.
  - Plug the power adapter into a standard electrical outlet.
5. **Power On:** Once all connections are secure, plug the power adapter into a wall socket. The LED strip should illuminate.

## OPERATING INSTRUCTIONS

### 1. Remote Control Operation

The included remote control allows for basic functions such as turning the strip on/off, adjusting brightness, and changing colors.

- **Power Button:** Turns the LED strip on or off.
- **Brightness Adjustment:** Use the + and - buttons to increase or decrease brightness (10%-100%).

- **Color Selection:** Press the dedicated color buttons (R, G, B, W, etc.) to select a static color.
- **Mode Selection:** Cycle through various dynamic lighting modes (e.g., flash, fade, jump) using the mode buttons.

**DIMMABLE**

It is possible to dim the LED strip. This can be done with the included remote control or the mobile app

**DIM THE LED STRIP FROM 10%-100%**

**Ledvion**

*Image: Remote control and app interface for dimming the LED strip.*

## 2. Smartphone App Control

For advanced features and full control, download the compatible smart home app (e.g., Tuya Smart or Smart Life).

1. **Download App:** Search for "Tuya Smart" or "Smart Life" in your smartphone's app store and install it.
2. **Register/Login:** Create an account or log in to the app.
3. **Add Device:** Follow the in-app instructions to add a new device. Ensure your phone's Bluetooth and Wi-Fi are enabled. The app will guide you through the pairing process.
4. **Control Features:** Once connected, you can:
  - Select from over 16 million colors (RGB + CCT).
  - Adjust brightness and color temperature (3000K-6500K).

- Set custom scenes and dynamic lighting effects.
- Utilize the timer function for scheduled on/off times.

**APP OPERATE**

# SMART LED STRIP

Control the LED strip with your mobile and choose from over 16 million colours

**RGB + CCT**

**AVAILABLE IN 5M / 10M**

**Ledvion**

*Image: Smartphone app interface for comprehensive control of the LED strip.*

### 3. Voice Assistant Compatibility

The Ledvion Smart LED Strip is compatible with popular voice assistants like Google Home, Amazon Alexa, and Apple Siri.

1. **Link Account:** In your voice assistant's app (e.g., Google Home, Alexa app), link your Tuya Smart/Smart Life account.
2. **Discover Devices:** Instruct your voice assistant to discover new devices.
3. **Voice Commands:** You can now control your LED strip using voice commands, such as:
  - "Hey Google, turn on the LED strip."
  - "Alexa, set LED strip to blue."
  - "Siri, dim the LED strip to 50%."





# COMPATIBLE FOR VOICE ASSISTANTS

This product is compatible for most voice assistants like Google Home, Alexa & Siri



works with



works with  
Hey Google



Works with  
Siri Shortcuts



## Ledvion

*Image: Voice assistant compatibility for the Ledvion LED Strip.*

## 4. Timer Function

The app allows you to set schedules for the LED strip to turn on or off automatically.

1. **Access Timer:** In the smart home app, navigate to the LED strip's control interface and look for the "Timer" or "Schedule" option.
2. **Create Schedule:** Set desired times for the strip to turn on or off, and select specific days if needed.
3. **Save:** Confirm and save your schedule.





# ADJUSTABLE LENGTH

It is possible to shorten the LED strip.  
Every 16.7 cm, the LED strip can be cut shorter



Image: App interface demonstrating the timer function for scheduling LED strip operation.

## MAINTENANCE

- **Cleaning:** Ensure the LED strip is powered off and unplugged before cleaning. Gently wipe the strip with a soft, dry cloth. Do not use abrasive cleaners or solvents.
- **Storage:** If storing the LED strip for an extended period, ensure it is clean, dry, and coiled loosely to prevent damage. Store in a cool, dry place.
- **Inspection:** Periodically check the strip and connections for any signs of wear or damage.

## TROUBLESHOOTING

Problem	Possible Cause	Solution
---------	----------------	----------

Problem	Possible Cause	Solution
LED strip does not light up.	No power. Loose connection. Damaged strip/adapter.	Check if the power adapter is plugged in and the outlet is working. Ensure all connections (strip to controller, controller to adapter) are secure. If damaged, contact customer support.
Remote control not working.	Battery depleted. Obstruction between remote and receiver.	Replace the remote control battery. Ensure a clear line of sight to the IR receiver on the controller.
App cannot connect to the strip.	Wi-Fi/Bluetooth issues. Incorrect pairing mode.	Ensure your phone's Wi-Fi and Bluetooth are on, and the strip is within range of your Wi-Fi network. Follow the app's pairing instructions carefully, which may involve resetting the strip.
Only part of the strip lights up.	Damage to the strip. Improper cutting.	Inspect the strip for visible damage. Ensure cuts were made only at designated marks. Damaged sections cannot be repaired.

## SPECIFICATIONS

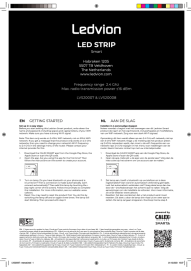


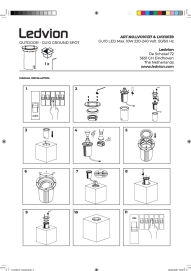
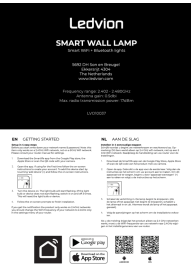
Brand	Ledvion
Model Number	LVS20008
Length	10 Meters
LEDs per Meter	60
Voltage	12V (Strip), 24V (Operating)
Power Consumption	12W (Strip), 19W (Total)
Luminous Flux	1850 lm
Color Temperature	3000K (Warm White) - 6500K (Cool White), RGB
Dimmable	Yes (10%-100%)
Cuttable Interval	Every 16.7 cm
Material	ABS+PS
Usage	Indoor
Product Dimensions	18 x 7 x 18 cm (packaging); 630 grams

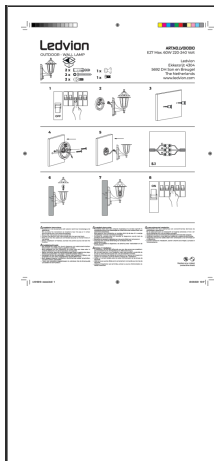
## WARRANTY AND SUPPORT

For warranty information or technical support, please refer to the documentation provided with your purchase or contact Ledvion

customer service through their official website. Keep your proof of purchase for warranty claims.

Related Documents - LVS20008

	<p><a href="#">Ledvion LVS20007/LVS20008 Smart LED Strip Installation and Technical Guide</a></p> <p>Comprehensive guide for the Ledvion LVS20007 and LVS20008 Smart LED Strips, covering setup, installation, technical specifications, and remote control operation. Includes safety warnings and product details. Compatible with 2.4GHz Wi-Fi and Bluetooth.</p>
	<p><a href="#">Ledvion LED Dimmer Manual and Technical Data</a></p> <p>Comprehensive manual for the Ledvion LED Dimmer switch (LV10001_1), including installation instructions, wiring diagrams, technical specifications, and safety warnings. Learn how to properly install and use the dimmer for optimal performance with dimmable LED lamps.</p>
	<p><a href="#">Ledvion Outdoor Sockets Installation and User Manual</a></p> <p>This document provides installation, usage, safety, and disposal instructions for Ledvion Outdoor Sockets. It includes detailed steps for mounting, wiring, and operating the product, along with important warnings and maintenance guidelines.</p>
	<p><a href="#">Ledvion GU10 Ground Spot Installation Manual</a></p> <p>Installation instructions and safety information for the Ledvion GU10 Ground Spot (ART.NO.LVO10137 &amp; LVO10139). Includes details on electrical safety, maintenance, and disposal.</p>
	<p><a href="#">Ledvion SMART WALL LAMP LV010037 - Setup, Installation &amp; Safety Guide</a></p> <p>Comprehensive guide for the Ledvion SMART WALL LAMP (LV010037), covering setup, installation, electrical safety, and disposal. Learn how to connect and configure your smart WiFi + Bluetooth wall light.</p>



[Ledvion Outdoor Wall Lamp Installation Guide](#)

Installation instructions and safety information for the Ledvion Outdoor Wall Lamp, model ART.NO.LVO10010. Includes details on electrical connections, mounting, and environmental considerations.