

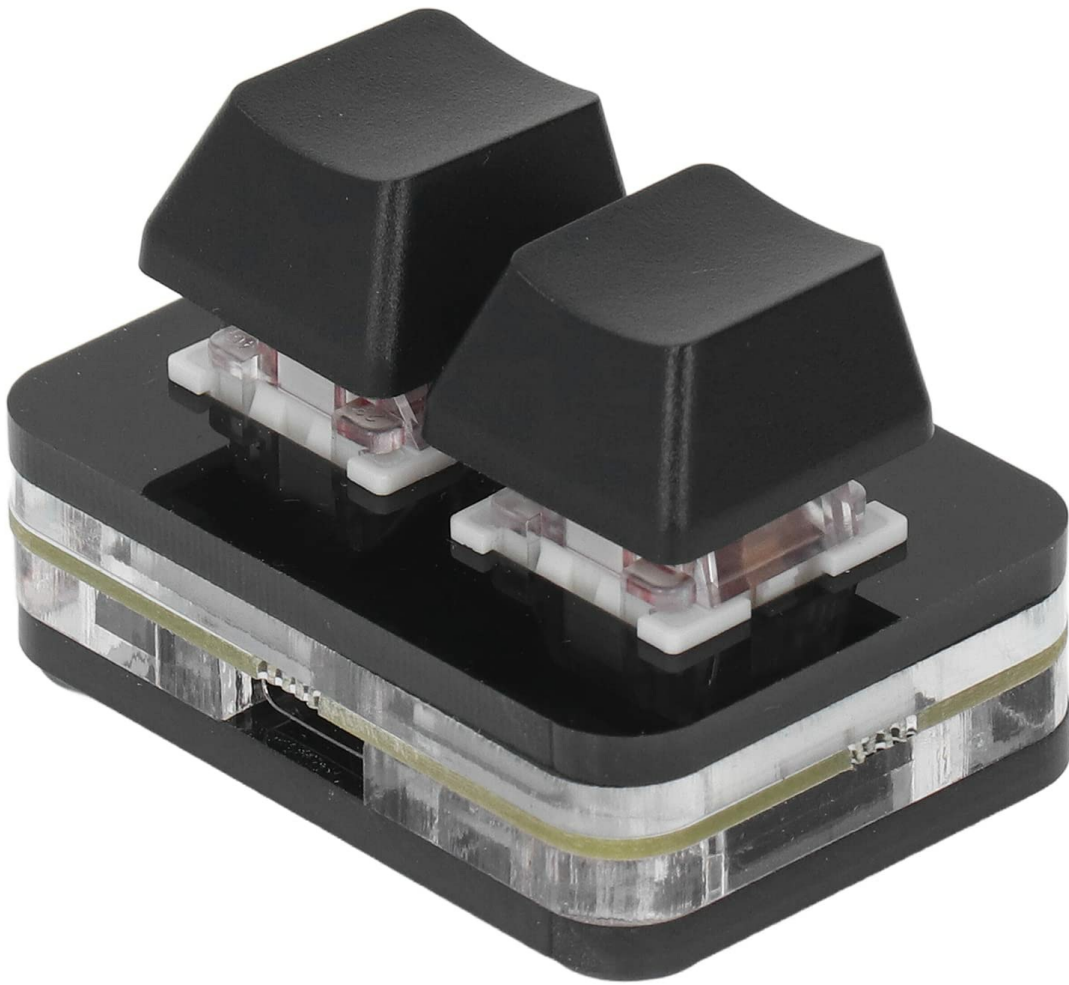
Bewinner Bewinnerggxtey3vzp-12

Bewinner 2 Keys USB Gaming Keypad Instruction Manual

Model: Bewinnerggxtey3vzp-12

1. INTRODUCTION

This manual provides detailed instructions for the Bewinner 2 Keys USB Gaming Keypad. This compact mechanical keypad is designed for enhanced productivity and gaming, offering customizable functions for various applications. Please read this manual thoroughly before using the product to ensure proper operation and longevity.



The Bewinner 2 Keys USB Gaming Keypad, featuring two programmable keys and a compact design.

2. PRODUCT FEATURES

- **Versatile Functionality:** Default copy and paste, with additional shortcut keys for cut, cancel, select all, play, pause, volume, forward, and backward functions.
- **Simplified Programming:** User-friendly application with English translation for easy macro customization and mouse simulation.
- **Convenient Instruction Storage:** Saves programmed instructions directly on the device, eliminating the need for re-configuration when switching computers.
- **Effortless Setup:** Equipped with a USB cable and keycap puller for easy operation and programming.
- **Premium Craftsmanship:** Smooth appearance with rounded corners for enhanced safety and reliability.

3. PACKAGE CONTENTS

Please verify that all items are present in your package:

- 1 x 2-Key Keypad

- 1 x USB Cable
- 1 x Keycap Puller
- 1 x User Manual



The package includes the 2-key keypad, a USB cable for connection, and a keycap puller for customization.

4. SETUP GUIDE

4.1. Connecting the Keypad

The keypad connects to your computer via a USB cable. No drivers are typically required for basic functionality.

1. Connect the smaller end of the provided USB cable to the USB port on the keypad.
2. Connect the larger end of the USB cable to an available USB port on your computer.
3. The keypad will automatically be recognized by your operating system.

2 Key Keypad

The default copy and paste function, you can also use shortcut keys, cut, cancel, select all, play, pause, volume, forward and backward functions.



The keypad is connected to a computer using the provided USB cable for power and data transfer.

4.2. Software Installation (Windows Only for Configuration)

To customize the keypad's functions, you need to use the dedicated programming software. This software is compatible with Windows operating systems. Once configured on Windows, the settings are saved to the device and will work on other operating systems like Linux, Mac, or Android without additional software.

1. Download the programming application from the official Bewinner support website (refer to product packaging or manufacturer's website for URL).
2. Install the software on your Windows computer.
3. Launch the application. Ensure the keypad is connected via USB.

A demonstration of the programming software, showing how to assign different functions such as keyboard inputs, mouse controls, and custom macros to the keys.

This video illustrates how to use the programming software to set up custom functions and passwords for the keypad. The software allows for various modes including one-key password input.

5. OPERATING INSTRUCTIONS

5.1. Default Functions

Out of the box, the keypad is typically configured for common functions:

- **Left Key:** Copy (Ctrl+C)
- **Right Key:** Paste (Ctrl+V)

5.2. Customizing Key Functions

Use the programming software to assign various functions to each key. Available functions include:

- **Keyboard Mode:** Assign any standard keyboard key (e.g., A, B, Enter, Space).
- **Mouse Mode:** Assign mouse actions (e.g., left click, right click, scroll up/down).
- **Multimedia Control:** Assign media playback controls (e.g., play/pause, volume up/down, next/previous track).
- **Macros:** Program a sequence of key presses or actions to be executed with a single press.
- **One-Key Password:** Store and output a password or string of up to 50 characters.

To change a key function:

1. Open the programming software.
2. Select the button you wish to configure.
3. Choose the desired function from the available options (e.g., "Keyboard", "Mouse", "One-key password").
4. Enter the specific value or sequence for the chosen function.
5. Click "Save" to apply the changes to the keypad.

A short video illustrating the process of programming custom macros and functions onto the keypad using the dedicated software.

5.3. Keycap Customization

The keypad features hot-swappable mechanical switches, allowing you to easily change keycaps. Use the provided keycap puller to remove and replace keycaps.



The set is equipped with USB cable and caliper to ensure that the 2 key keyboard is easy to operate and program, convenient and practical.



The keypad with one keycap removed, showing the hot-swappable red mechanical switch underneath, allowing for easy customization.

5.4. LED Lighting Control

The keypad features customizable LED lighting. The programming software allows you to change colors and lighting effects, such as breathing mode or constant light.



The keypad with its keys illuminated, showcasing the customizable LED lighting feature.

Video demonstrating the LED lighting effects and various functions of the 2-key keypad, including random color breathing and constant light modes.

6. MAINTENANCE

To ensure the longevity and optimal performance of your keypad, follow these maintenance guidelines:

- **Cleaning:** Use a soft, dry cloth to wipe the surface of the keypad. For stubborn dirt, a slightly damp cloth can be used, but ensure no moisture enters the device.
- **Avoid Liquids:** Keep the keypad away from liquids to prevent damage to internal components.
- **Storage:** Store the keypad in a cool, dry place when not in use. Avoid extreme temperatures.
- **Handle with Care:** Avoid dropping or subjecting the keypad to strong impacts.

7. TROUBLESHOOTING

7.1. Keypad Not Responding

- **Check USB Connection:** Ensure the USB cable is securely connected to both the keypad and the computer. Try a different USB port.

- **Restart Computer:** Sometimes a simple restart can resolve connectivity issues.
- **Reinstall Software:** If using custom programming, try reinstalling the software and re-applying your settings.

7.2. Custom Functions Not Working

- **Verify Software Settings:** Double-check that the desired functions are correctly assigned and saved within the programming software.
- **Save to Device:** Ensure the settings have been permanently saved to the keypad's internal memory.
- **Operating System Compatibility:** Remember that custom programming must be done on a Windows system, but the saved functions will work on other OS. If you are on a non-Windows system and functions are not working, ensure they were correctly programmed on Windows first.

7.3. LED Lights Not Working/Changing

- **Check Software Settings:** Confirm that LED lighting options are enabled and configured as desired in the programming software.
- **Power Supply:** Ensure the keypad is receiving sufficient power via the USB connection.

8. SPECIFICATIONS

Feature	Detail
Brand	Bewinner
Model Number	Bewinnerggxtey3vzp-12
Connectivity	USB
Switch Type	Red Switch
Key Position	2 Keys
Material	Plastic
Item Weight	1.76 ounces
Package Dimensions	6.61 x 3.78 x 1.18 inches
Special Feature	Programmable Shortcut Keys and Mouse Simulation
Compatible Devices	Gaming Console, PC

9. WARRANTY AND SUPPORT

For warranty information, technical support, or further assistance, please refer to the official Bewinner website or contact their customer service directly. Keep your purchase receipt for warranty claims.