

Manuals+

[Q & A](#) | [Deep Search](#) | [Upload](#)

[manuals.plus](#) /

- › [Parblo](#) /
- › [Parblo Ninos Q Drawing Tablet User Manual](#)

Parblo Ninos Q

Parblo Ninos Q Drawing Tablet User Manual

Model: Ninos Q

INTRODUCTION

This manual provides detailed instructions for setting up, operating, maintaining, and troubleshooting your Parblo Ninos Q Mobile Digital Graphic Tablet. Please read this manual thoroughly before using the device to ensure optimal performance and longevity.



Figure 1: Parblo Ninos Q Drawing Tablet connected to a smartphone, illustrating its mobile drawing capabilities.

1. PACKAGE CONTENTS AND SETUP

Before you begin, ensure all items listed below are present in your package.



Figure 2: Complete package contents of the Parblo Ninos Q Drawing Tablet.

1.1. What's in the Box

- Parblo Ninos Q Drawing Tablet
- P09 Stylus
- Quick Start Guide
- Phone Stand
- Micro USB OTG Adapter
- Nib Extractor

- Replacement Nibs (x6)

1.2. Initial Connection

The Ninos Q tablet features a built-in Type-C cable for direct connection. For devices with Micro USB ports, use the provided Micro USB OTG adapter.



Figure 3: The built-in Type-C cable and Micro USB OTG adapter for versatile connectivity.

1. **For Android Phones/Tablets:** Connect the tablet's Type-C cable directly to your Android device if it has a Type-C port. If your device has a Micro USB port, attach the Micro USB OTG adapter to the tablet's Type-C cable, then connect to your device.
2. **For Windows/Mac Computers:** Connect the tablet's Type-C cable directly to an available USB port on your computer.

1.3. Driver Installation (for Windows/Mac)

While the tablet offers plug-and-play functionality for basic use, installing the official driver is recommended for full customization and optimal performance, especially on Windows and Mac operating systems. The driver allows for custom

display ratio settings and advanced features.

- Visit the official Parblo website to download the latest driver for your operating system.
- Follow the on-screen instructions to complete the installation.
- Restart your computer after installation if prompted.

2. OPERATING THE PARBLO NINOS Q

The Parblo Ninos Q is designed for intuitive use across various devices. Its compact size (20.8 x 14.9 x 0.1 cm) and lightweight design (210g) make it highly portable.

2.1. 4 Device Switches

The Ninos Q features a rotating switch with four modes to optimize the drawing area for different devices and screen resolutions.

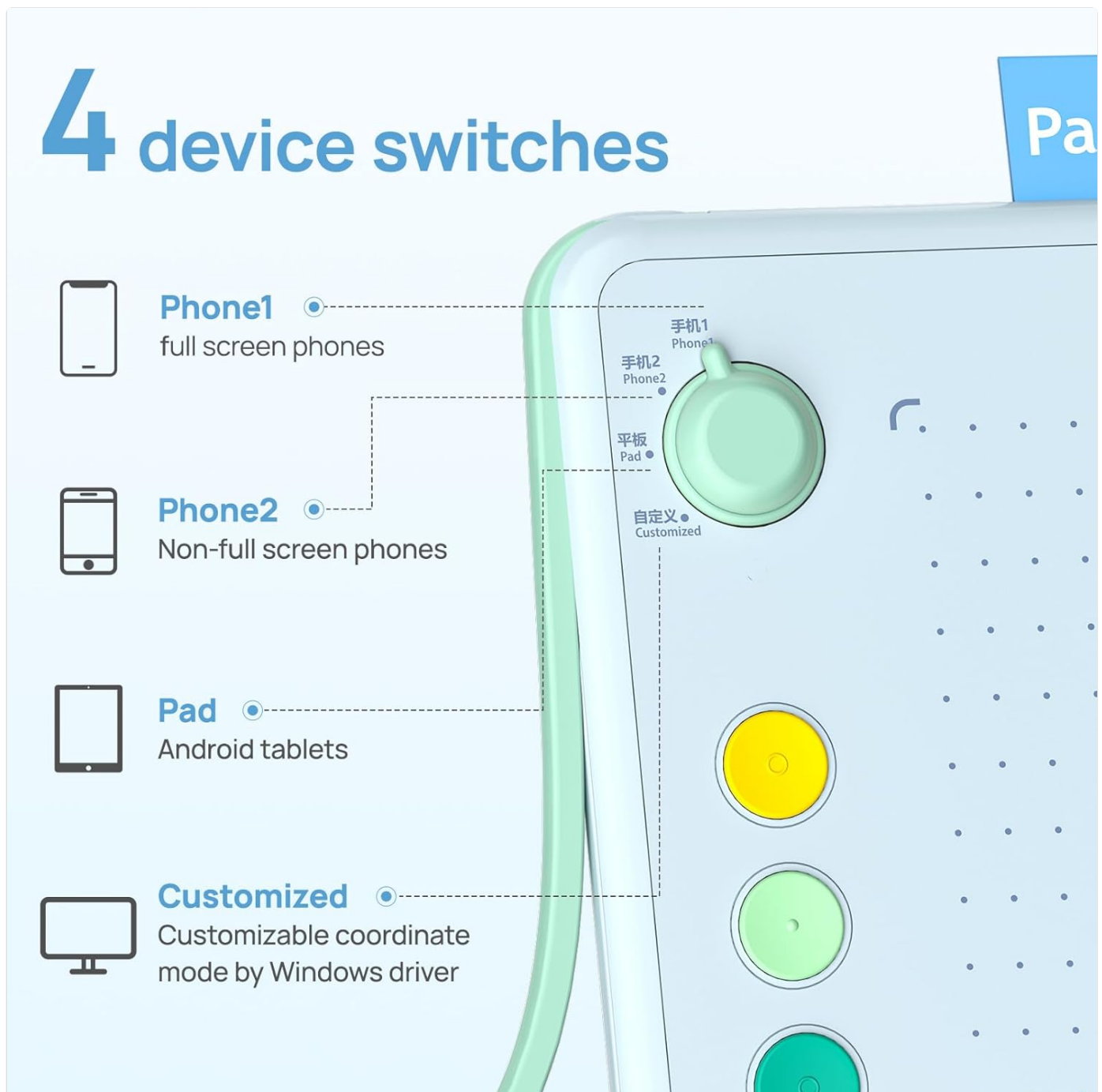


Figure 4: Explanation of the 4 device switch modes.

- **Phone1:** Optimized for full-screen Android phones.
- **Phone2:** Optimized for non-full-screen Android phones.
- **Pad:** Optimized for Android tablets.
- **Customized:** Allows for customizable coordinate mode via the Windows driver, providing flexibility for computer users.

2.2. P09 Battery-Free Stylus

The included P09 stylus is battery-free, ensuring continuous use without the need for charging. It offers advanced features for precise and natural drawing.



Figure 5: Key features of the P09 Battery-Free Stylus.

- **8192 Pressure Levels:** Provides exceptional sensitivity, allowing for fine control over line thickness and opacity.
- **±60° Tilt Function:** Mimics traditional brush and pencil strokes, enabling natural shading and artistic effects.
- **Smooth Writing:** Designed for a responsive and lag-free drawing experience.
- **Ergonomic Design:** Comfortable to hold for extended drawing sessions.

2.3. 5 Shortcut Keys

The tablet features five customizable shortcut keys (K1-K5) for quick access to frequently used functions. These keys are active when the device is connected to a computer.

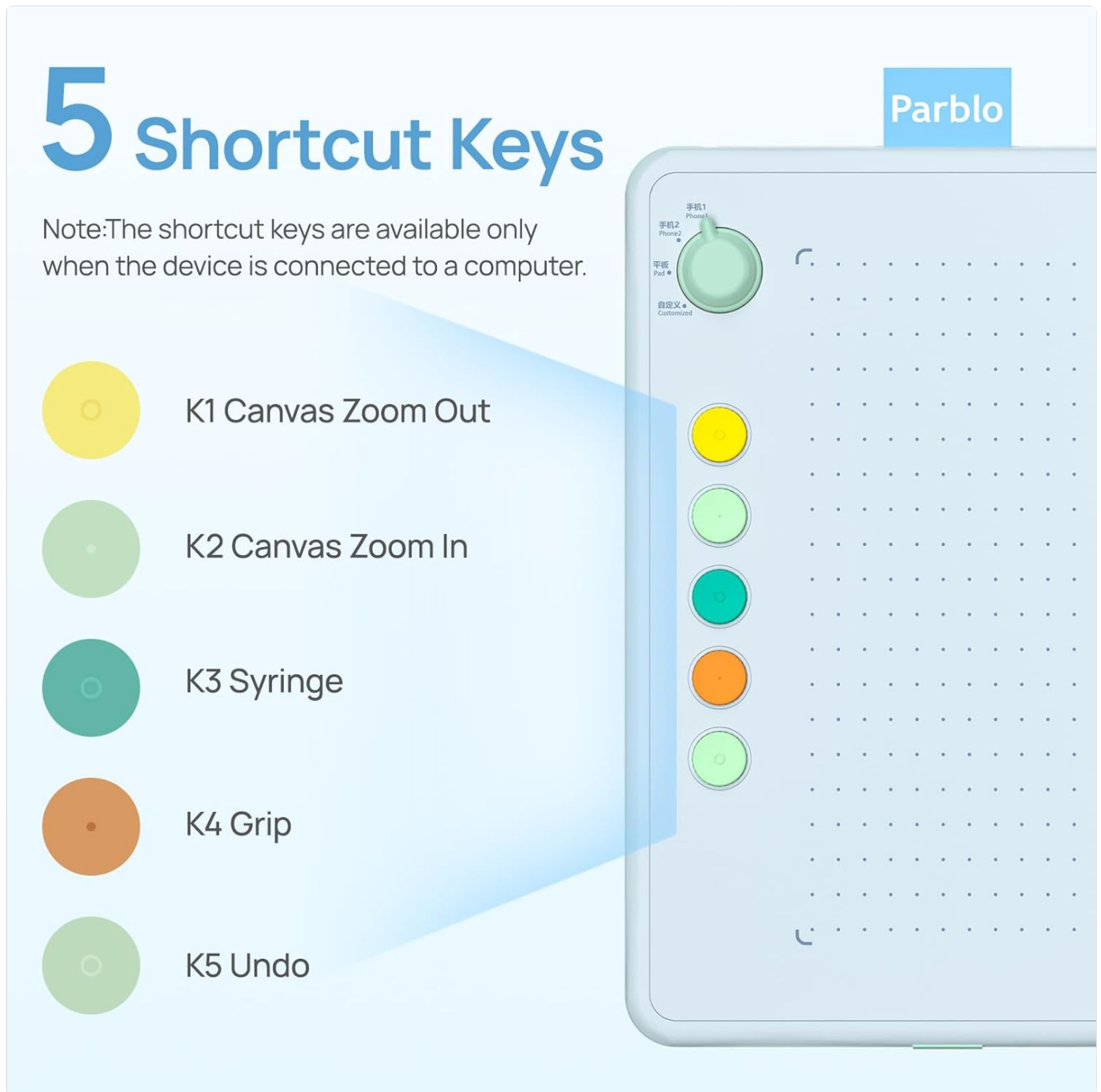


Figure 6: Default functions of the 5 shortcut keys.

- **K1:** Canvas Zoom Out
- **K2:** Canvas Zoom In
- **K3:** Syringe (Eyedropper tool)
- **K4:** Grip (Hand tool)
- **K5:** Undo

Note: The functionality of these keys can often be customized further through the tablet's driver software on your computer.

2.4. Software Compatibility

The Parblo Ninos Q is compatible with a wide range of popular creative software, expanding your artistic possibilities.

Match Multiple Drawing Software



Figure 7: Examples of compatible drawing and design software.

Compatible software includes, but is not limited to: Photoshop, SAI, Illustrator, Clip Studio Paint, Pixologic ZBrush, Blender, CorelDRAW, Lightroom, and more. The tablet is compatible with Android 6.0+, Windows 8.0+, Mac 10.12+, and HarmonyOS 1.0+.

Note: The tablet is not compatible with iPhone or iPad devices. Chromebook compatibility is currently limited.

3. MAINTENANCE

Proper care and maintenance will extend the life of your Parblo Ninos Q tablet and stylus.

- **Cleaning:** Use a soft, dry cloth to clean the tablet surface and stylus. Avoid using harsh chemicals or abrasive materials.
- **Storage:** Store the tablet and stylus in a cool, dry place away from direct sunlight and extreme temperatures.
- **Stylus Nibs:** Replace the stylus nib when it shows signs of wear to maintain optimal drawing performance. Use the provided nib extractor for easy replacement.
- **Cable Care:** Handle the built-in Type-C cable and OTG adapter gently to prevent damage.

4. TROUBLESHOOTING

If you encounter issues with your Parblo Ninos Q, refer to the following common troubleshooting steps.

Problem	Possible Cause / Solution
Tablet not responding / No input	Ensure the tablet is securely connected to your device. Try connecting to a different USB port or using a different adapter if applicable. Restart your computer or Android device. Verify that the correct device switch mode is selected on the tablet.
Stylus not working / No pressure sensitivity	Ensure the stylus nib is properly inserted and not excessively worn. For Windows/Mac, ensure the latest driver is installed correctly. Reinstall the driver if necessary. Check if the drawing software you are using supports pressure sensitivity and that it is enabled in the software settings. Test the stylus on a different compatible application.
Shortcut keys not functioning	Shortcut keys are primarily active when connected to a computer. Ensure you are using it with a Windows or Mac system. Verify that the tablet driver is installed and running on your computer. Check the driver settings for key assignments and ensure they are not conflicting with other software.
Inaccurate cursor movement	Ensure the tablet surface is clean and free of debris. Recalibrate the tablet if your driver software offers this option. For computer use, ensure the "Customized" mode is selected on the device switch and adjust settings in the driver.

5. SPECIFICATIONS

Detailed technical specifications for the Parblo Ninos Q Drawing Tablet.

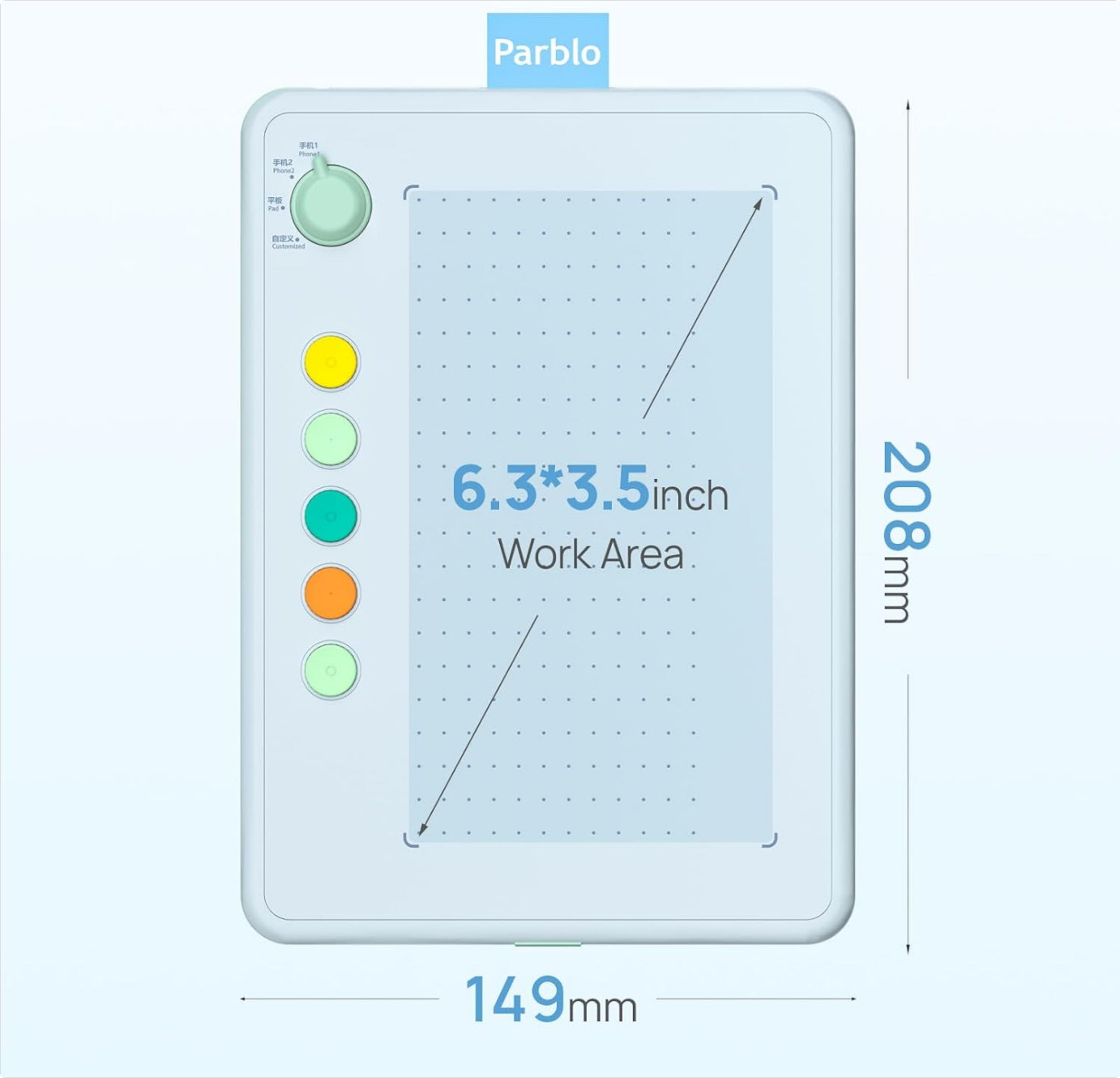





Figure 8: Physical dimensions and active work area of the tablet.

Feature	Detail
Brand	Parblo
Model Name	Ninos Q
Product Dimensions	20.8 x 14.9 x 0.1 cm
Weight	210g (tablet only) / 400g (package weight)
Active Area	6.3 x 3.5 inches
Connectivity Technology	USB (Built-in Type-C cable, Micro USB OTG adapter included)
Stylus	P09 Battery-Free Stylus
Pressure Sensitivity	8192 Levels

<div><div>Parblo Intangbo X7 Driver Installation</div><div>For the digital drawing tablet, please refer to the following instructions.</div><div>1. Computer Connection</div><div><p>Connect the USB cable to your computer and tablet. The tablet will be automatically recognized by the computer. Please refer to the following instructions for the connection.</p><p>For Windows: Please refer to the following instructions for the connection.</p><p>For macOS: Please refer to the following instructions for the connection.</p><p>For Android: Please refer to the following instructions for the connection.</p><p>For Chromebook: Please refer to the following instructions for the connection.</p></div><div></div></div>	<div>Parblo Intangbo X7 Driver Installation Guide</div> <div>Comprehensive guide to installing and configuring drivers for the Parblo Intangbo X7 digital drawing tablet on Windows, macOS, Android, and Chromebook. Learn about connection methods, pen settings, area settings, and key customization.</div>
<div><div>Parblo</div><div></div><div></div></div>	<div>Parblo Coast22 Pro Quick Start Guide - Installation and Setup</div> <div>Comprehensive quick start guide for the Parblo Coast22 Pro graphic monitor, covering setup, installation, driver configuration for Windows and Mac, and customer support.</div>
<div><div>User Manual for Ninso M Graphics Tablet</div><div><p>Key Warnings:</p><ul style="list-style-type: none">1. Do not use the tablet on a surface that is not flat or smooth. This may cause the tablet to be damaged or the pen to be damaged.2. Do not use the tablet on a surface that is not clean. This may cause the tablet to be damaged or the pen to be damaged.3. Do not use the tablet on a surface that is not dry. This may cause the tablet to be damaged or the pen to be damaged.4. Do not use the tablet on a surface that is not stable. This may cause the tablet to be damaged or the pen to be damaged.5. Do not use the tablet on a surface that is not safe. This may cause the tablet to be damaged or the pen to be damaged.6. Do not use the tablet on a surface that is not suitable. This may cause the tablet to be damaged or the pen to be damaged.7. Do not use the tablet on a surface that is not recommended. This may cause the tablet to be damaged or the pen to be damaged.8. Do not use the tablet on a surface that is not approved. This may cause the tablet to be damaged or the pen to be damaged.9. Do not use the tablet on a surface that is not authorized. This may cause the tablet to be damaged or the pen to be damaged.10. Do not use the tablet on a surface that is not permitted. This may cause the tablet to be damaged or the pen to be damaged.11. Do not use the tablet on a surface that is not allowed. This may cause the tablet to be damaged or the pen to be damaged.12. Do not use the tablet on a surface that is not accepted. This may cause the tablet to be damaged or the pen to be damaged.13. Do not use the tablet on a surface that is not agreed. This may cause the tablet to be damaged or the pen to be damaged.14. Do not use the tablet on a surface that is not acknowledged. This may cause the tablet to be damaged or the pen to be damaged.15. Do not use the tablet on a surface that is not recognized. This may cause the tablet to be damaged or the pen to be damaged.16. Do not use the tablet on a surface that is not identified. This may cause the tablet to be damaged or the pen to be damaged.17. Do not use the tablet on a surface that is not determined. This may cause the tablet to be damaged or the pen to be damaged.18. Do not use the tablet on a surface that is not established. This may cause the tablet to be damaged or the pen to be damaged.19. Do not use the tablet on a surface that is not constructed. This may cause the tablet to be damaged or the pen to be damaged.20. Do not use the tablet on a surface that is not organized. This may cause the tablet to be damaged or the pen to be damaged.21. Do not use the tablet on a surface that is not arranged. This may cause the tablet to be damaged or the pen to be damaged.22. Do not use the tablet on a surface that is not planned. This may cause the tablet to be damaged or the pen to be damaged.23. Do not use the tablet on a surface that is not prepared. This may cause the tablet to be damaged or the pen to be damaged.24. Do not use the tablet on a surface that is not completed. This may cause the tablet to be damaged or the pen to be damaged.25. Do not use the tablet on a surface that is not finished. This may cause the tablet to be damaged or the pen to be damaged.</div></div>	<div>Parblo Ninos M Graphics Tablet User Manual - Setup, Drivers, and Troubleshooting</div> <div>Comprehensive user manual for the Parblo Ninos M Graphics Tablet. Learn how to connect, install drivers, configure settings, and find solutions to common issues. Includes setup guides and FAQs.</div>