

Manuals.plus /

› ELUXE /

› ELUXE Sparkling Scalp Shampoo User Manual

ELUXE B0CLLLVK7L

ELUXE Sparkling Scalp Shampoo User Manual

1. PRODUCT OVERVIEW

The ELUXE Sparkling Scalp Shampoo is formulated to cleanse and revitalize hair, promoting softness, shine, and frizz control. This product is designed to help repair daily damage with natural, paraben-free ingredients, contributing to increased hair resilience.



Image: ELUXE Sparkling Scalp Shampoo, 7 oz bottle.

2. SAFETY INFORMATION

This product contains high-pressure gas and requires careful handling. Please observe the following safety

guidelines:

1. Do not use near open flames or sources of ignition.
2. Avoid using large quantities indoors in close proximity to fire.
3. Do not expose the product to direct sunlight or temperatures exceeding 40°C (104°F), as this may cause an explosion.
4. Do not incinerate the product.
5. Dispose of the container only after it is completely empty.

High-pressure gas: LPG / CO2

3. INGREDIENTS

Purified water, sodium cocoyl isethionate, sodium cocoyl glutamate, LPG, lauryl glucoside, cocamidopropyl betaine, carbon dioxide, hydrolyzed keratin, polyquaternium-10, zinc pca, betaine, polyquaternium-51, panthenol (provitamin B-5), biotin, niacin (vitamin B3), camellia japonica seed oil, macadamia integrifolia seed oil, simmondsia chinensis (Jojoba) seed oil, rosmarinus officinalis (Rosemary) leaf extract, capsicum annuum extract, zingiber officinale (Ginger) root Extract, camellia sinensis (Green Tea) leaf extract, glycyrrhiza glabra (Licorice) root extract, chamomilla recutita (Matricaria) flower extract, polygonum cuspidatum root, scutellaria baicalensis root extract, centella asiatica (Gotu Kola) extract, polysorbate 20, persea gratissima (Avocado) oil, essential oil blend, riboflavin (vitamin B-2), tocopherol (vitamin E) disodium edta, and citric acid.

4. USAGE INSTRUCTIONS

Follow these steps for optimal results:

1. **Prepare Hair:** Moisten your scalp and hair thoroughly with lukewarm water.
2. **Dispense Shampoo:** Shake the shampoo bottle well before use. Dispense a small amount of the foam (a few beads) onto your hand.
3. **Apply and Massage:** Apply the foam directly to your entire scalp and gently massage it in. Ensure even distribution.
4. **Rinse:** Rinse your hair and scalp thoroughly with water until all shampoo is removed.

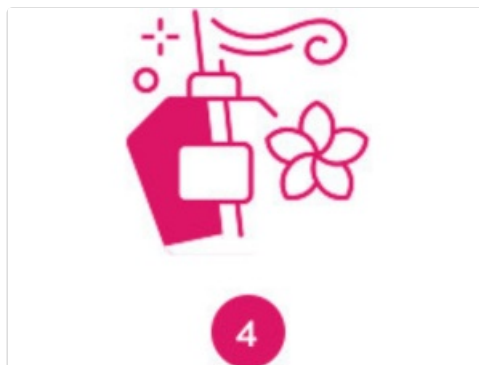
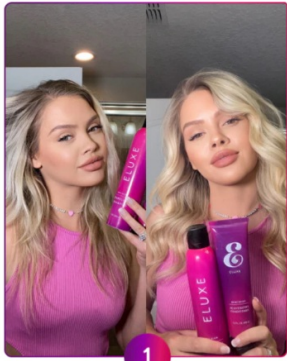


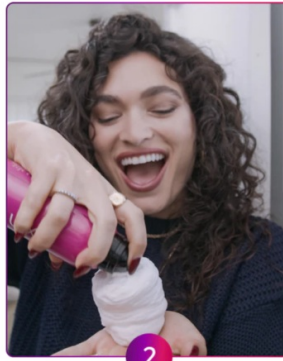
Image: Dispensing the unique foam texture of ELUXE Sparkling Scalp Shampoo.

For a complete hair care routine, consider using ELUXE Conditioner and Hair Oil after shampooing.



Hydration & Repair

Experience the luxury of rejuvenated, silk-smooth hair with ELUXE. Ideal for moisturizing and revitalizing dry, damaged hair.



Superior Formulation

Trust ELUXE for clinically proven ingredients that nourish and strengthen your hair from within.



Effortless Routine

Fit ELUXE into any hair care routine for salon-quality results anywhere, anytime.

Image: ELUXE's approach to hair care: Hydration & Repair, Superior Formulation, and an Effortless Routine.

5. MAINTENANCE AND BEST PRACTICES

To maintain hair health and maximize the benefits of ELUXE Sparkling Scalp Shampoo:

- **Regular Use:** Incorporate the shampoo into your regular hair washing routine.
- **Complementary Products:** For enhanced results, use with ELUXE Conditioner and ELUXE Hair Oil as part of a comprehensive hair care system.
- **Storage:** Store the product in a cool, dry place away from direct sunlight and heat sources, in accordance with safety guidelines.

3 Steps to Glow Your Hair

1 : ELUXE Shampoo



2 : ELUXE Conditioner



3 : ELUXE Hair Oil



Image: The ELUXE 3-step hair care system for optimal results.

6. TROUBLESHOOTING

If you encounter any issues while using the ELUXE Sparkling Scalp Shampoo, consider the following:

- **Insufficient Lather/Foam:** Ensure the bottle is shaken well before dispensing. The product is designed to come out as a foam. If it appears watery or does not foam adequately, check the bottle for proper shaking and ensure it is not stored in extreme temperatures.
- **Hair Feeling Dry or Brittle:** While the shampoo is designed to be hydrating, individual hair types may react differently. Ensure you are rinsing thoroughly to remove all product residue. Consider following with a hydrating conditioner, especially if you have very long or dry hair.
- **No Noticeable Improvement:** Hair health improvement can take time. Consistent use as directed, along with a balanced hair care routine, is recommended.

7. SPECIFICATIONS

Specification	Detail
Brand	ELUXE
Item Form	Foam
Hair Type	Normal
Scent	Mint
Age Range (Description)	Adult
Package Dimensions	9.21 x 1.89 x 1.85 inches
Item Weight	7 ounces
UPC / GTIN	850057232127
ASIN	B0CLLLVK7L
Manufacturer	Specialty Formulations and Manufacturing LLC

8. WARRANTY AND SUPPORT

For product inquiries, support, or information regarding potential warranties, please contact the distributor:

Distributed by: Seiseidou America, Inc.

Please refer to your purchase documentation or the official ELUXE website for the most current warranty information and customer service contact details.