

JUJIANG PKM-C026-400

JUJIANG C026 Solar Dual Gate Opener User Manual

Model: PKM-C026-400

1. INTRODUCTION

This manual provides detailed instructions for the installation, operation, and maintenance of your JUJIANG C026 Solar Dual Gate Opener. This system is designed for medium-duty dual swing gates, supporting weights up to 770 lbs or lengths up to 16 ft per arm. It features solar power capabilities, robust motors, and intelligent control for reliable and convenient gate automation.

2. SAFETY INFORMATION

Please read all safety warnings and instructions carefully before installation and operation to prevent injury or damage. Failure to follow these instructions may result in serious injury or property damage.

- Ensure all power sources are disconnected before performing any maintenance or installation.
- Keep hands and clothing clear of the gate and opener mechanisms during operation.
- Do not allow children to play near the gate or operate the remote controls.
- Install warning signs in visible locations to alert others of automatic gate operation.
- Regularly inspect the gate opener for signs of wear, damage, or misalignment.

3. PRODUCT COMPONENTS OVERVIEW

The JUJIANG C026 Solar Dual Gate Opener kit includes the following main components:



Figure 3.1: Complete Kit Contents

- **Gate Opener Arms (x2):** Robust 60W DC 24V motors made of pure copper, designed for smooth and quiet performance.
- **Control Box:** Houses the intelligent control board with a smart chip, managing each gate arm independently.
- **12V7Ah Batteries (x2):** Primary power source for the system.
- **20W Solar Panel:** Charges the batteries using solar energy.
- **Remote Controls (x2):** Operate the gate from up to 100 feet away. The system supports up to 120 remotes.
- **Mounting Hardware:** Includes brackets, bolts, and other necessary components for installation.
- **Manual Release Key:** For manual gate operation during power outages or if remotes are unavailable.

4. SETUP AND INSTALLATION

Installation of the JUJIANG C026 is designed to be straightforward with commonly available tools. Refer to the detailed installation diagram and power mode options below.

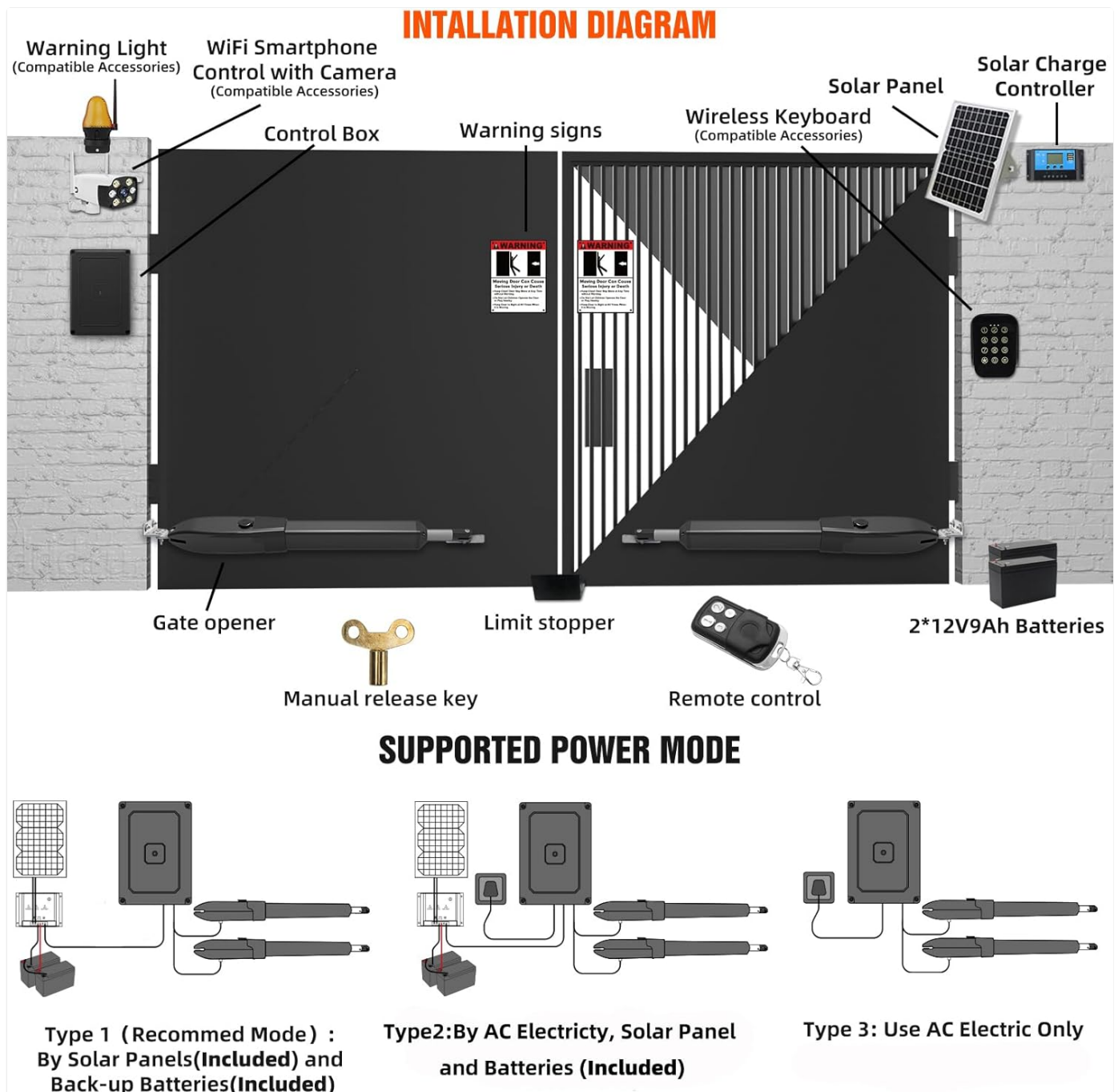


Figure 4.1: Installation Diagram

4.1 Power Modes

The system supports various power configurations:



Type 1: Solar Panel & Batteries (Recommended)



Type 2: AC Electricity, Solar Panel & Batteries



Type 3: AC Electricity & Backup Batteries



Type 4: AC Electricity Only

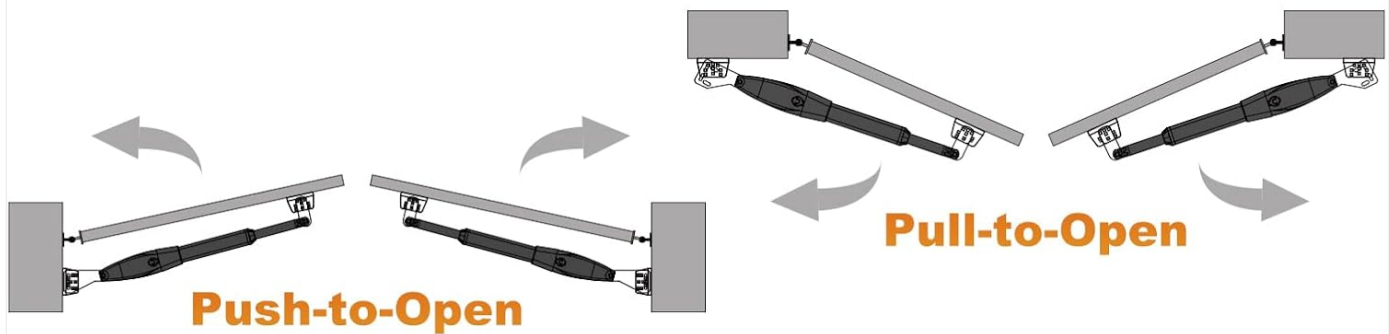
It is recommended to fully charge the batteries before first use, especially when relying on solar power.

4.2 Gate Opening Options

The opener supports both push-to-open and pull-to-open installations, accommodating various gate designs.

CUSTOMIZABLE OPENING OPTIONS

All Types of Medium duty single & dual doors
Each gate can be controlled and set individually



Gate Weight (per leaf)	350KG(770lbs)	✓	NR	NR	NR	NR	NR
	300KG(660lbs)	✓	✓	NR	NR	NR	NR
	250KG(550lbs)	✓	✓	✓	NR	NR	NR
	200KG(440lbs)	✓	✓	✓	NR	NR	NR
	160KG(350lbs)	✓	✓	✓	✓	NR	NR
	110KG(240lbs)	✓	✓	✓	✓	✓	NR
	50KG(100lbs)	✓	✓	✓	✓	✓	✓
		1.2-1.8M(4"-6")	2.4M(8")	3M(10")	3.6M(12")	4.3M(14")	5M(16")

Figure 4.2: Customizable Opening Options

4.3 Solar System Connections

For detailed guidance on connecting the solar components, please refer to the official video below:

Your browser does not support the video tag.

Video 4.1: Solar System Connections. This video provides a comprehensive guide on how to properly connect the solar panel, charge controller, and batteries to the gate opener system.

5. OPERATING INSTRUCTIONS

Your JUJIANG gate opener is designed for user-friendly operation with advanced features for convenience and safety.

5.1 Remote Control Operation

Use the included remote controls to operate the gate. Each press of the button cycles the electric gate opener through open-stop-close-stop-open. Button "1" controls motor 2, and button "2" controls both motor 1 and motor 2. The remote has a range of up to 100 feet.

Solar Gate Opening by Remote Control

Just press the remote control button, you can enjoy the joy of automatic gate opening

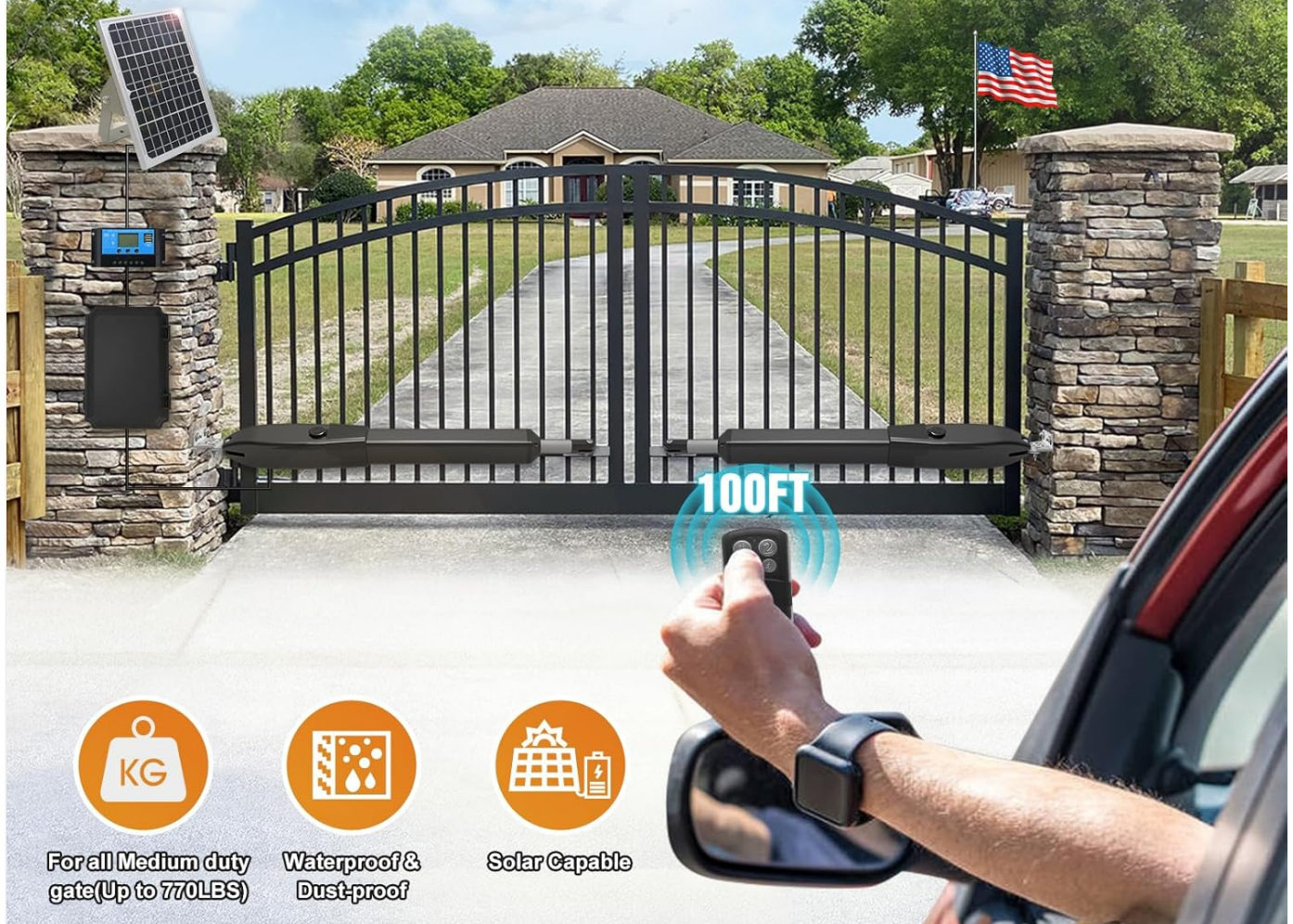


Figure 5.1: Remote Control Operation

5.2 Smart Features

- **Obstruction Detection:** The system features a stop-and-reverse function. If the actuator arm encounters any obstruction during operation, it will automatically stop or reverse to prevent damage or injury.
- **Auto-Close:** The "Auto-Close" feature can be configured to automatically close the gate after a set period, enhancing security.
- **Soft Start & Stop:** This mechanism ensures a gentle start and stop for the gate arms, prolonging the life of the smart gate opener and reducing wear and tear.

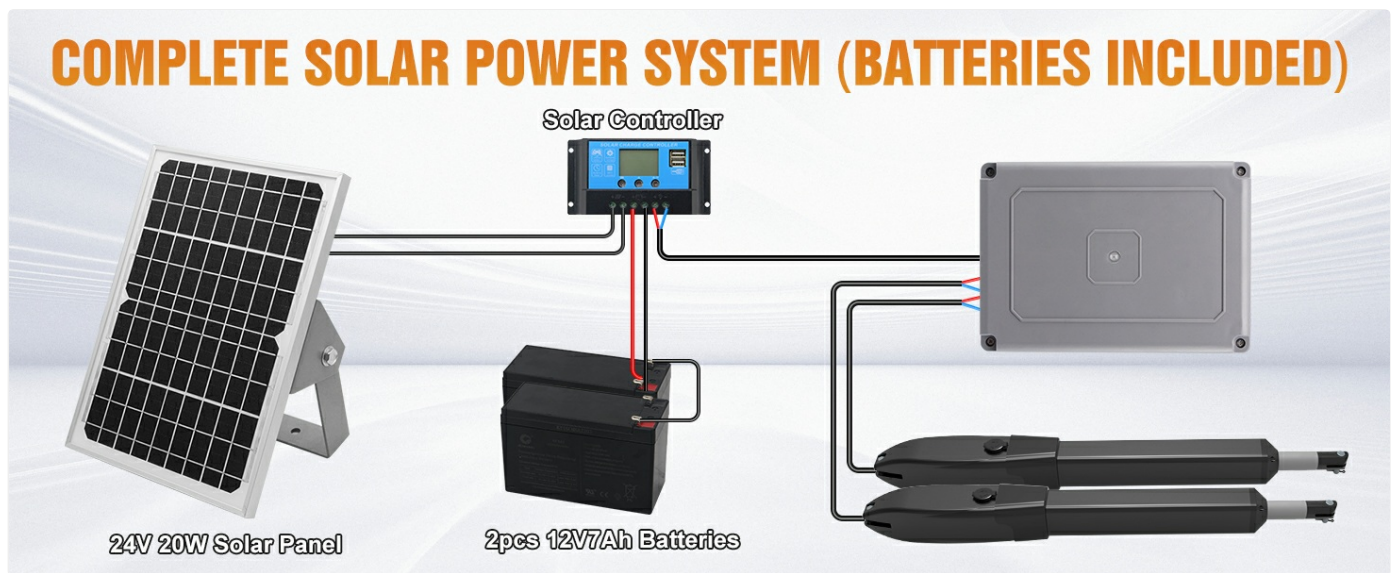


Figure 5.2: Enhanced Safety Features

5.3 Manual Release

In case of a power outage or if the remote controls are lost, use the provided manual release key to disengage the motors and operate the gate manually.

6. MAINTENANCE

Regular maintenance ensures the longevity and optimal performance of your gate opener.

- **Battery Maintenance:** Ensure the solar panel is clean and free from obstructions to allow efficient charging of the batteries. Check battery terminals periodically for corrosion.
- **General Inspection:** Annually inspect all mounting hardware, pivot points, and electrical connections for tightness and wear. Lubricate moving parts as recommended in the full manual.
- **Weather Resistance:** The system is engineered with an IP55 waterproof and dustproof design, allowing it to withstand extreme temperatures between -7°F and 131°F. However, ensure the control box is securely closed to maintain its protective rating.

WORK PERFECT IN EXTREMELY WEATHER



Figure 6.1: Performance in Extreme Weather

7. TROUBLESHOOTING

If you encounter issues with your gate opener, refer to the following common troubleshooting steps. For more detailed solutions, consult the comprehensive user manual provided with your product.

Problem	Possible Cause	Solution
Gate does not open/close	No power, remote battery low, obstruction, motor issue.	Check power connections, replace remote battery, clear obstructions, check motor wiring.
Gate stops unexpectedly	Obstruction detected, power fluctuation.	Clear path, check power supply stability.
Remote control range is poor	Interference, remote battery low, antenna issue.	Check for interference, replace remote battery, ensure antenna is clear.

8. SPECIFICATIONS

Feature	Specification
Model Number	PKM-C026-400
Gate Capacity (per arm)	Up to 770 lbs or 16 ft
Motor Power	60W
Power Source	Solar (20W panel) & 2x 12V7Ah Lead Acid Batteries (AC optional)
Remote Control Range	100 ft
Operating Temperature	-7°F to 131°F
Protection Rating	IP55 (Waterproof & Dustproof)
Item Weight	59.9 pounds
Product Dimensions	37 x 16 x 10 inches

9. WARRANTY AND SUPPORT

JUJIANG is committed to providing excellent customer service and support for your gate opener.

- **30-Day Policy:** Enjoy a 30-day worry-free exchange and return policy.
- **12-Month Warranty:** The product comes with a 12-month warranty from the date of purchase.
- **Lifetime Technical Support:** JUJIANG provides lifetime technical support for any questions or assistance you may need.

For professional solutions or further assistance, please contact JUJIANG customer service.

