

## Manuals+

[Q & A](#) | [Deep Search](#) | [Upload](#)

Manuals.plus /

› [FIREHOFF](#) /

› FIREHOFF Ceramic Pellet Stove Igniter PSX 7-240-B Instruction Manual

## FIREHOFF PSX 7-240-B

# FIREHOFF Ceramic Pellet Stove Igniter PSX 7-240-B Instruction Manual

**Brand:** FIREHOFF

**Model:** PSX 7-240-B

## INTRODUCTION

This manual provides essential information for the installation, operation, and maintenance of your FIREHOFF Ceramic Pellet Stove Igniter, model PSX 7-240-B. This high-quality ceramic igniter is designed to efficiently restore the ignition function of compatible pellet stoves.

If your pellet stove is experiencing ignition issues, such as failing to start, the igniter is often the component requiring replacement. The FIREHOFF igniter offers a reliable solution, featuring durable ceramic construction and rapid heating capabilities to ensure quick and consistent pellet ignition.



*Image: The FIREHOFF Ceramic Pellet Stove Igniter, model PSX 7-240-B, shown in its product packaging.*

## SETUP AND INSTALLATION

Follow these steps carefully to install the FIREHOFF Ceramic Pellet Stove Igniter. Ensure all safety precautions are observed.

### Installation Steps:

1. **Cut off the electrical power** to the stove before any handling. This is crucial for safety.
2. Carefully unscrew and remove the old, defective igniter.
3. Install the new FIREHOFF igniter, ensuring it is properly screwed into place.
4. Reconnect and verify all electrical connections. The igniter is supplied with 6.3mm male Faston connectors for easy installation.
5. Restore power to the appliance and restart it to check for proper functioning.

## Instructions d'Utilisation

### INSTALLATION :

1. Coupez l'alimentation électrique du poêle avant toute manipulation.
2. Dévissez l'ancienne bougie défectueuse avec précaution.
3. Installez la nouvelle bougie en vous assurant qu'elle est bien vissée.
4. Rebranchez et vérifiez les connexions électriques.
5. Rallumez l'appareil pour vérifier son bon fonctionnement.

## Consigne de sécurité

### ATTENTION :

- Résistance électrique chauffante à haute température (jusqu'à 850 °C).  
**Peut provoquer des brûlures graves en cas de contact direct.**
- Risque électrique : tout contact avec des connexions sous tension peut entraîner un choc électrique.
- Risque d'incendie : la proximité de matériaux inflammables (papier, tissu, liquides) peut provoquer un incendie.

### PRÉCAUTIONS :

1. Toujours manipuler, connecter ou installer uniquement lorsque l'appareil est hors tension.
2. Attendre que la bougie soit complètement refroidie avant toute intervention.
3. Porter des gants isolants et, si nécessaire, des lunettes de protection pour éviter les blessures.
4. Ne jamais modifier la bougie ou les connexions électriques pour garantir la sécurité et préserver la garantie.
5. Utiliser des outils adaptés pour éviter d'endommager les composants.

*Image: Detailed installation steps and critical safety information for the igniter.*

### Using Quick Connectors:

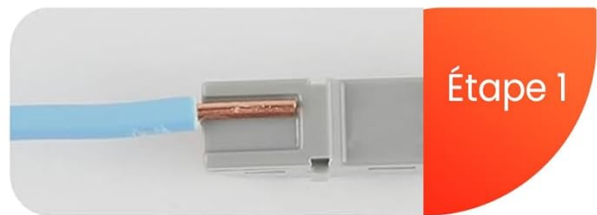
The igniter is supplied with two quick connectors to facilitate electrical connections. Follow these steps for secure wiring:

1. **Step 1:** Insert the stripped end of the wire into the connector.
2. **Step 2:** Close the lever to secure the wire.
3. **Step 3:** Repeat for the second wire, ensuring a firm connection.



livré avec **2**  
connecteurs rapides

### Comment les utiliser ?



Étape 1



Étape 2



Étape 3

*Image: Visual guide on how to properly use the included quick connectors for electrical wiring.*

#### Safety Instructions and Precautions:

##### WARNING:

- **High-Temperature Electrical Heating Element:** The igniter reaches temperatures up to 850 °C. Direct contact can cause severe burns.
- **Electrical Risk:** Any contact with live electrical connections can result in electric shock.
- **Fire Risk:** Proximity to flammable materials (paper, fabric, liquids) can cause a fire.

##### PRECAUTIONS:

- Always handle, connect, or install only when the appliance is powered off.
- Wait for the igniter to cool completely before any intervention.
- Wear insulating gloves and, if necessary, protective eyewear to prevent injuries.
- Never modify the igniter or electrical connections to ensure safety and preserve the warranty.
- Use appropriate tools to avoid damaging components during installation or removal.

## OPERATING PRINCIPLES

The FIREHOFF Ceramic Pellet Stove Igniter is designed for efficient and rapid ignition of wood pellets in compatible stoves. Its operational characteristics ensure reliable performance:

- **Rapid Heating:** The igniter quickly reaches temperatures up to 1000°C within 60 to 90 seconds, ensuring fast and effective pellet ignition.
- **Durable Ceramic Tube:** Constructed from high-quality ceramic, the heating element offers excellent resistance to oxidation and corrosion, contributing to an optimal lifespan. It has been tested for 100,000 heating cycles.
- **Integrated Resistance:** The design incorporates total electrical insulation for safe and reliable operation within the stove's ignition system.
- **Brass Fixing Flange:** Features a 3/8 inch thread for secure mounting, typically installed using a 17 mm wrench.



Image: Key features and operational benefits of the FIREHOFF Ceramic Pellet Stove Igniter.

## MAINTENANCE

The FIREHOFF Ceramic Pellet Stove Igniter is designed for durability and minimal maintenance. However, periodic inspection is recommended to ensure continued optimal performance:

- **Visual Inspection:** Periodically check the igniter for any visible signs of wear, damage, or excessive carbon buildup. Ensure the ceramic tube is intact.
- **Connection Check:** Verify that electrical connections remain secure and free from corrosion.
- **Cleaning:** If necessary, gently clean any light deposits from the igniter surface using a soft brush, ensuring the stove is completely cool and disconnected from power. Avoid abrasive materials or harsh chemicals.

Always ensure the stove is powered off and the igniter has cooled down completely before performing any inspection or cleaning.

## TROUBLESHOOTING

If your pellet stove fails to ignite, the igniter is a common point of failure. Consider the following troubleshooting steps:

- **Stove Not Igniting:** If the stove does not light up, and other electronic components appear functional, the ceramic igniter may be defective. This is the primary indication for replacement.
- **Check Electrical Connections:** Ensure all electrical connections to the igniter are secure and free from damage or corrosion. Loose connections can prevent the igniter from receiving power.
- **Power Supply:** Verify that the stove is receiving adequate power and that no circuit breakers have tripped.

If these steps do not resolve the issue, replacement of the igniter is likely necessary. Refer to the 'Setup and Installation' section for replacement procedures.

## SPECIFICATIONS

Detailed technical specifications for the FIREHOFF Ceramic Pellet Stove Igniter PSX 7-240-B:

Specification	Value
Model Number	PSX 7-240-B
Manufacturer	FIREHOFF
Power	300 W
Voltage	230 V
Diameter	11.5 mm
Fixing Thread	3/8 inch
Length with Fixing (under nut)	89 mm
Heating Tube Length	81 mm
Wire Length	340 mm
Connector Type	Faston male 6.3 mm

Specification	Value
Product Dimensions (L x W x H)	19 x 2 x 2 cm
Weight	80 grams
Included Components	Automatic connectors

## Détails Techniques :

Puissance: **300 W**

Tension: **230V**

Diametre: **11,5 mm**

Filetage de fixation: **3/8 pouce**

Longueur avec fixation: **89 mm**

Longueur tube chauffant: **81 mm**

Longueur des fils: **340 mm**

Type de connecteur: **Faston males 6,3 mm**



*Image: A comprehensive list of the igniter's technical specifications.*

### Compatibility:

This ceramic igniter is compatible with various pellet stove models, including but not limited to:

- **BESTOVE:** Ioko, Mouse, Smart
- **DEVILLE:** Galaxie, Atlas, Ulys
- **HAAS + SOHN:** Ecopellet 302.07, Ecopellet 302.07-C, Ecopellet 302.08-C, Ecopellet 302.08-ST, Ecopellet 306, Compact 309.06, Compact 310.06
- **JOLLY MEC:** Angolo, Botero 2, Bridge, Cult, Chrissie, Cristel, Dory, Frontale, Globo, Idea 2, Quadra, Modular, Meltemi, Odette, Paddy, Pixie, Reverse, Rubik, Synthesis 60

# Compatible avec :

## BESTOVE

Ioko, Mouse, Smart

## DEVILLE

Galaxie, Atlas, Ulys

## HAAS + SOHN

Ecopellet 302.07, Ecopellet 302.07-C, Ecopellet 302.08-C,  
Ecopellet 302.08-ST, Ecopellet 306, Compact 309.06, Compact 310.06

## JOLLY MEC

Angolo, Botero 2, Bridge, Cult, Chrissie, Cristel, Dory, Frontale, Globo,  
Idea 2, Quadra, Modular, Meltemi, Odette, Paddy, Pixie, Reverse, Rubik,  
Synthesis 60

*Image: A visual representation of the igniter's compatibility with various pellet stove brands and models.*

# Fabriqué sur mesure pour vos besoins

Des dimensions exactes pour une fiabilité et  
des performances optimales

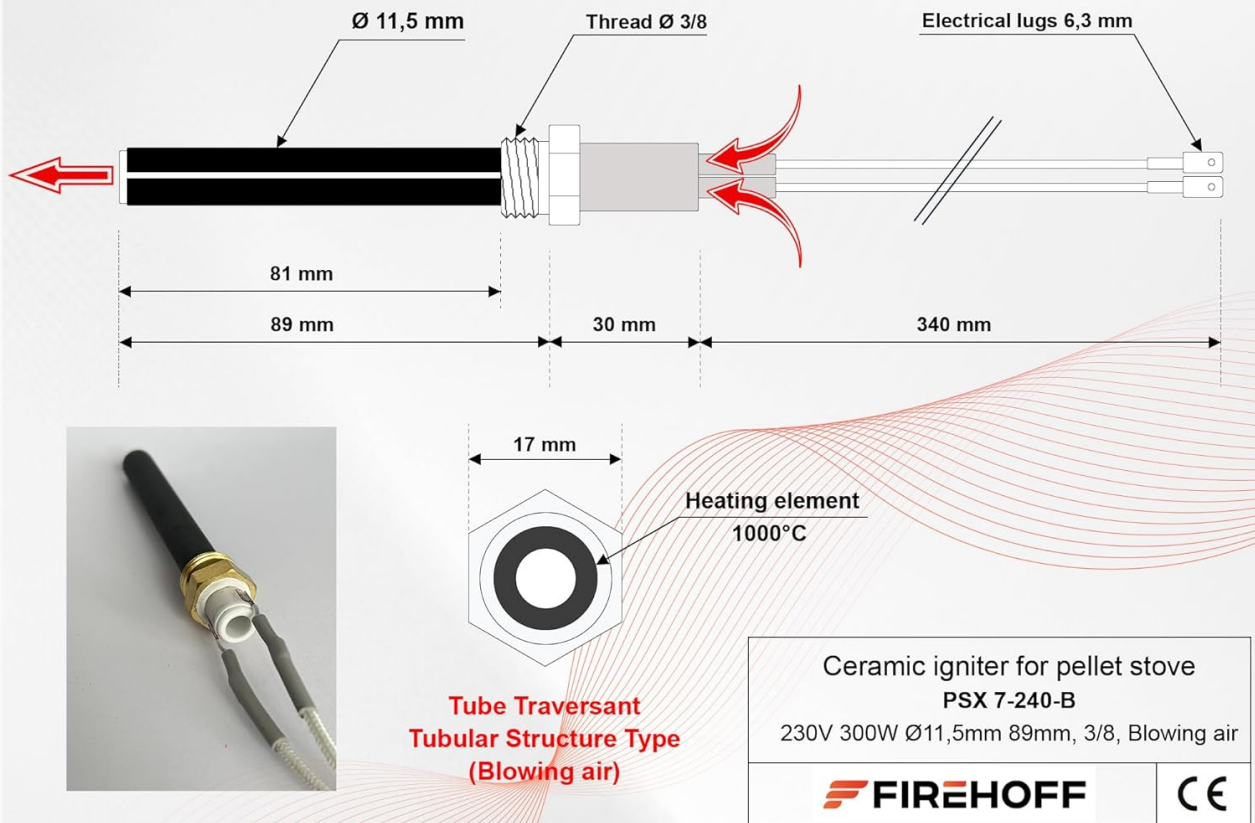


Image: Technical drawing illustrating the exact dimensions and components of the igniter, including heating element and electrical lugs.

## WARRANTY

The FIREHOFF Ceramic Pellet Stove Igniter PSX 7-240-B comes with a **one-year warranty** from the date of purchase. This warranty covers manufacturing defects and ensures the quality of the product.

In the unlikely event of a problem with your product during the warranty period, please contact FIREHOFF customer support for assistance. We are committed to providing a replacement as quickly as possible.

## SUPPORT

For any questions, technical assistance, or support regarding your FIREHOFF Ceramic Pellet Stove Igniter, please do not hesitate to contact the manufacturer, FIREHOFF. Our team is available to provide guidance and resolve any issues you may encounter.

Please have your model number (PSX 7-240-B) and purchase details ready when contacting support to ensure efficient service.

