

Music Sound BTMSTWSINEAR231

Music Sound Fancy Wireless In-Ear Bluetooth Earphones User Manual

Model: BTMSTWSINEAR231

1. INTRODUCTION

Thank you for choosing the Music Sound Fancy Wireless In-Ear Bluetooth Earphones. These earphones are designed to provide an immersive wireless audio experience with convenience and style. This manual will guide you through the setup, operation, and maintenance of your new earphones.

Key features include:

- In-ear design for enhanced sound.
- Up to 25 hours of total playback time with the charging case.
- Intuitive controls on the earphones for managing music and calls.
- Automatic pairing for seamless device connection.
- Compact and portable design.



Image 1.1: Music Sound Fancy Wireless Earphones and Charging Case. The image displays the white in-ear earphones alongside their matching charging case, which features a distinctive black and white pattern.

2. PACKAGE CONTENTS

Please check the package for the following items:

- Music Sound Fancy Wireless Earphones
- Charging Case
- USB-C Charging Cable
- User Guide
- Extra Earbuds (2 pairs)



Image 2.1: Contents of the Music Sound Fancy Earphones package. This image clearly labels the earphones, charging case, USB-C charging cable, user guide, and two additional pairs of earbud tips.

3. SETUP

3.1. Charging the Earphones and Case

Before first use, fully charge the earphones and the charging case.

1. Place the earphones into the charging case.
2. Connect the USB-C charging cable to the charging port on the case and the other end to a USB power source (e.g., wall adapter, computer USB port).
3. The LED indicator on the earphones and/or case will show charging status. Refer to the LED indicator section for details.
4. A full charge provides approximately 5 hours of playback for the earphones, with the charging case extending total playback to up to 25 hours.

ALL DAY PLAY-TIME!

25

HOURS

with
charging
case



5

HOURS
single charge

Image 3.1: Battery life indication for Music Sound Fancy Earphones. The image highlights that the earphones offer 5 hours of playback on a single charge, and up to 25 hours total with the charging case.

3.2. Pairing with a Bluetooth Device

The earphones feature automatic pairing for convenience.

1. Ensure the earphones are charged and placed in the charging case.
2. Open the charging case. The earphones will automatically enter pairing mode.
3. On your Bluetooth-enabled device (smartphone, tablet, laptop), go to the Bluetooth settings.
4. Search for available devices and select "Music Sound Fancy" (or similar name) from the list.
5. Once connected, you will hear an audio prompt, and the LED indicator on the earphones will change (e.g., stop flashing).
6. For subsequent uses, the earphones will automatically connect to the last paired device when removed from the case, provided Bluetooth is enabled on your device.



Image 3.2: Music Sound Fancy Earphones showing touch control areas and LED battery level indicator. The image points out the touch-sensitive surface for controls and the small LED light indicating battery status.

4. OPERATING THE EARPHONES

4.1. Wearing the Earphones

For optimal sound quality and comfort, ensure a proper fit.

- Select the earbud tips that best fit your ears from the included options.
- Gently insert each earphone into your ear canal and twist slightly to secure a comfortable and snug fit.

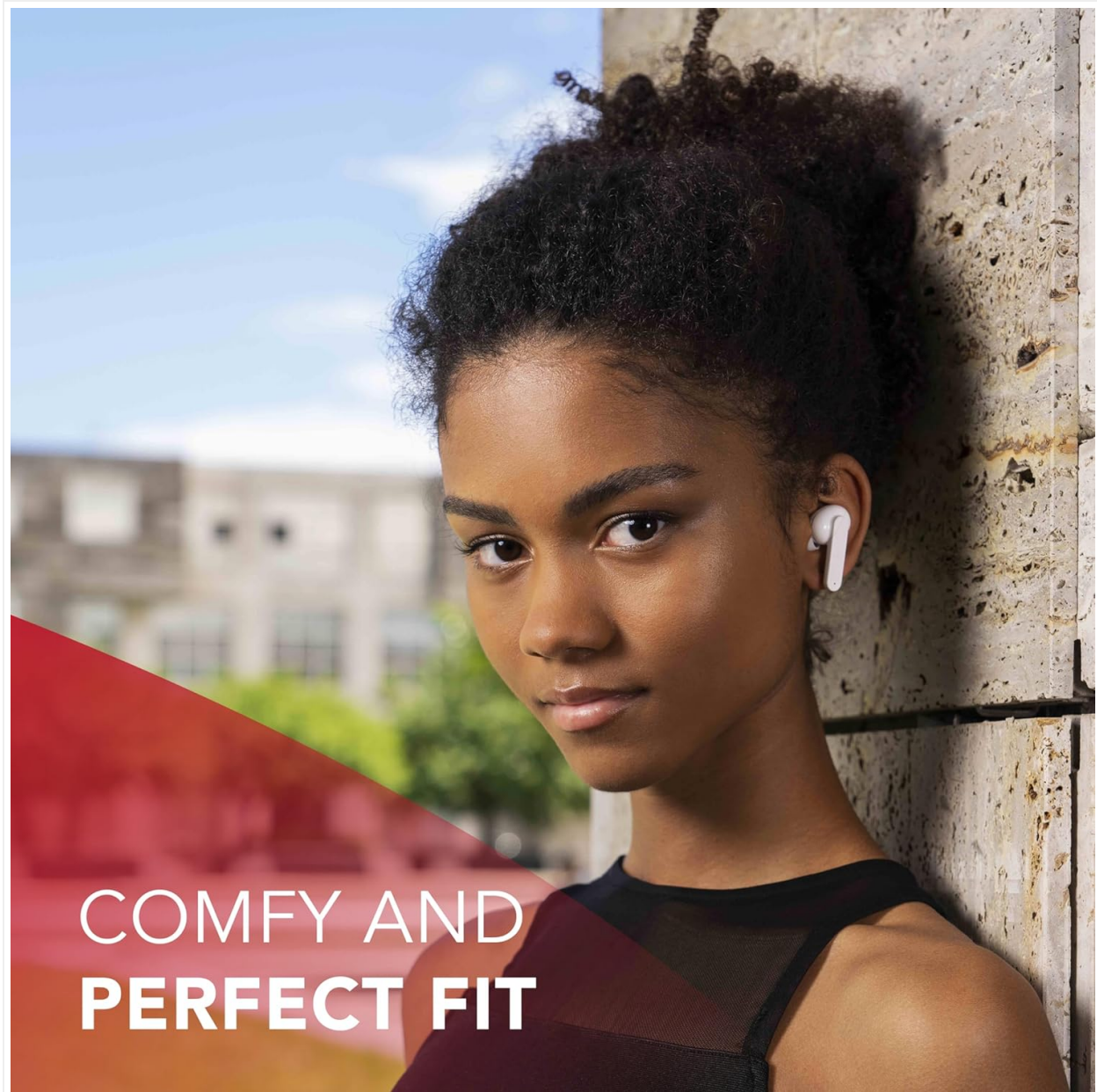


Image 4.1: A person wearing Music Sound Fancy Earphones, demonstrating a comfortable and secure fit. The image emphasizes the ergonomic design for extended wear.

4.2. Touch Controls

The earphones feature touch-sensitive controls for managing audio playback and calls. Refer to Image 3.2 for the location of the touch control area.

- **Play/Pause:** Single tap on either earphone.
- **Next Track:** Double tap on the right earphone.
- **Previous Track:** Double tap on the left earphone.
- **Answer/End Call:** Single tap on either earphone during an incoming call or active call.
- **Reject Call:** Press and hold on either earphone during an incoming call.
- **Activate Voice Assistant:** Triple tap on either earphone (functionality may vary by device).
- **Volume Control:** (Information not explicitly provided, common methods include press and hold or multiple taps on specific earbud. User may need to refer to specific user guide or device settings.)

5. MAINTENANCE

5.1. Cleaning

- Regularly clean the earphones and charging case with a soft, dry, lint-free cloth.
- Remove earbud tips and clean them separately with mild soap and water if necessary, ensuring they are completely dry before reattaching.
- Do not use abrasive cleaners, alcohol, or chemical solvents.

5.2. Storage

- When not in use, store the earphones in their charging case to protect them and keep them charged.
- Store in a cool, dry place, away from extreme temperatures and direct sunlight.

5.3. Water Resistance

Important: These earphones are NOT water-resistant. Avoid exposure to water, moisture, rain, or sweat to prevent damage.

6. TROUBLESHOOTING

If you encounter issues with your Music Sound Fancy earphones, try the following solutions:

- **Earphones not pairing:**
 - Ensure both earphones are charged.
 - Turn off and on Bluetooth on your device.
 - Delete "Music Sound Fancy" from your device's Bluetooth list and attempt to re-pair.
 - Place earphones back in the case, close it, wait a few seconds, then open it again to re-enter pairing mode.
- **No sound or low volume:**
 - Check the volume level on both your connected device and the earphones.
 - Ensure earphones are properly seated in your ears.
 - Verify that the earphones are connected to the correct audio output on your device.
 - Clean any debris from the earphone speakers.
- **Charging issues:**
 - Ensure the USB-C cable is securely connected to both the case and the power source.
 - Try a different USB-C cable or power adapter.
 - Clean the charging contacts on both the earphones and inside the case.
- **One earphone not working:**
 - Place both earphones back in the charging case, close the lid, and then open it again.
 - Try re-pairing the earphones with your device.

7. SPECIFICATIONS

Feature	Specification
Brand	Music Sound

Feature	Specification
Model Name	BTMSTWSINEAR231 (Fancy)
Connectivity Technology	Wireless (Bluetooth)
Ear Placement	In-Ear
Form Factor	In-Ear
Compatible Devices	Bluetooth-enabled devices including smartphones, tablets, laptops, and potentially desktop computers, TVs, and smart speakers.
Control Type	Touch Control
Water Resistance Level	Not Water Resistant
Frequency Range	20 Hz - 20,000 Hz (Standard)
Special Features	Rechargeable Battery, Automatic Pairing Connection
Battery Composition	Lithium-ion
Rechargeable Battery	Yes
Included Components	USB-C Cable, Instructions, Bluetooth Earphones
Manufacturer	CellularLine S.p.A.

8. WARRANTY AND SUPPORT

For warranty information and customer support, please refer to the documentation included in your product package or contact the retailer where you purchased the product. You may also visit the official website of the manufacturer, CellularLine S.p.A., for further assistance.

Please note that specific warranty terms and conditions may vary by region and retailer.